



# HERE TO SERVE ALL YOUR TRUCK & BUS NEEDS

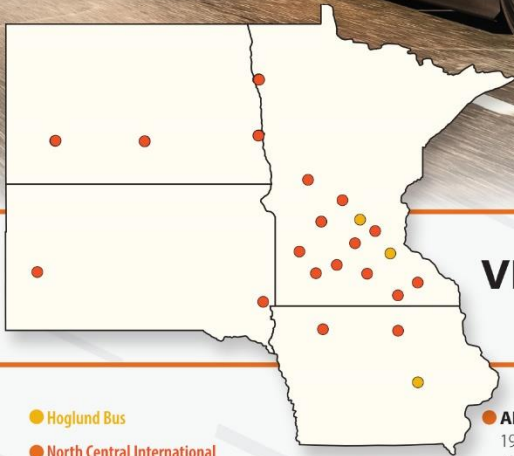


*New/Used Truck & Bus Sales*

*First-Rate Service*

*Rental & Leasing*

*Quality Parts*



**VISIT ONE OF OUR MANY LOCATIONS**  
[www.northcentralintl.com](http://www.northcentralintl.com)



● Hoglund Bus

● North Central International

● **CORCORAN**

10409 County Rd 101  
Rogers, MN 55374  
(612) 473-6700

● **MARSHALL**

503 US-59 N  
Marshall, MN 56258  
(507) 532-5718

● **ROCHESTER**

2729 Whynaught Ct SE  
Rochester, MN 55904  
(507) 289-2361

● **DICKINSON**

3421 Energy Dr  
Dickinson, ND 58601  
(701) 483-4702

● **MARSHALLTOWN**

823 S 19th Ave  
Marshalltown, IA 50158  
(641) 753-7669

● **SANBORN**

13067 US-71  
Sanborn, MN 56083  
(507) 648-3811

● **ALBERT LEA**

1900 Sorenson Rd  
Albert Lea, MN 56007  
(507) 373-0653

● **EAST GRAND FORKS**

1422 Gateway Dr NE  
East Grand Forks, MN 56721  
(218) 773-1009

● **MASON CITY**

11243 265th St  
Mason City, IA 50401  
(641) 423-6042

● **SIoux FALLS**

5131 N Healy Ln  
Sioux Falls, SD 57104  
(605) 336-3820

● **ALEXANDRIA**

5791 MN-29  
Alexandria, MN 56308  
(320) 762-8126

● **FARGO**

4235 Main Ave  
Fargo, ND 58103  
(701) 282-2817

● **MONTICELLO**

116 Oakwood Dr E  
Monticello, MN 55362  
(763) 295-5119

● **SPENCER**

2808 4th Ave W  
Spencer, IA 51301  
(712) 262-7644

● **BISMARCK**

1716 Revere Dr  
Bismarck, ND 58501  
(701) 223-7676

● **GLENCOE**

2825 11th St E  
Glencoe, MN 55336  
(320) 864-8288

● **NEW ULM**

3 Somsen St  
New Ulm, MN 56073  
(507) 359-9600

● **SAINT CLOUD**

375 33rd Ave S  
St Cloud, MN 56301  
(320) 251-9511

● **BLOOMINGTON**

9545 Penn Ave S  
Minneapolis, MN 55431  
(612) 999-9505

● **MANKATO**

1955 W Howard Dr  
North Mankato, MN 56003  
(507) 625-2030

● **RAPID CITY**

2530 SD-445  
Rapid City, SD 57702  
(605) 343-7575

● **WILLMAR**

2700 E US-12  
Willmar, MN 56201  
(320) 235-2770

**DRIVE THRU  
TAKE OUT**

# **75TH CHOW MEIN SUPPER**

**4:30PM - 6:00PM OR  
UNTIL SOLD OUT**

**CHOW MEIN, CRUNCHY NOODLES,  
RICE, FORTUNE COOKIE, & CAKE  
\$13.00**

**Wednesday  
February 5th,  
2025**

**SPRINGFIELD UNITED  
METHODIST CHURCH**

**205 North Marshall Ave  
Springfield, MN 56087  
507-723-6698**

**CALL FOR DELIVERY TO  
SHUT INS BY 4PM**

**Pre-Order  
Quarts of  
Chow Mein**

ALZHEIMER'S  ASSOCIATION®

# Dementia Caregiver Support Group

Presented by the Alzheimer's Association  
Minnesota-North Dakota Chapter



## Build a support system with people who understand.

Alzheimer's Association® caregiver support groups, conducted by trained facilitators, are a safe place for caregivers, family and friends of persons with dementia to:

- Develop a support system.
- Exchange practical information on caregiving challenges and possible solutions.
- Talk through issues and ways of coping.
- Share feelings, needs and concerns.
- Learn about community resources.



ST. JOHN'S  
CIRCLE OF CARE  
A TRADITION FOR ALL AGES

Last Tuesday of every month | 4 - 5 p.m.  
St. John's Circle of Care | 201 S. County Rd. 5, Springfield, MN 56087

Contact Chandra Jensen 507.723.3241 or 507.220.2364 or [chandraj@sjlhome.com](mailto:chandraj@sjlhome.com)  
or Amber Meidl 507.723.3200 or [amber@sjlhome.com](mailto:amber@sjlhome.com)

Visit [alz.org/mnnd](http://alz.org/mnnd) to learn more about caregiver programs and resources. To further extend your network of support, visit ALZConnected®, our online community, at [alzconnected.org](http://alzconnected.org).

Minnesota-North Dakota Chapter  
12701 Whitewater Drive, Suite 290  
Minnetonka, MN 55343

[alz.org/mnnd](http://alz.org/mnnd)  
24/7 Helpline 1.800.272.3900

# ST. JOHNS GRANDKIDS OPENINGS



St. John Lutheran Home  
GrandKids and V.I.K. Club

At GrandKids, we learn through play with enriching faith based curriculum and intergenerational experiences.

**Join the fun – contact us about openings**

- ✔ **Infant Room**
- ✔ **Toddler Room**

**Tour Today**

 **Contact Us  
(507)723-3227**



*Crissy's Engraving  
& Gifts*

**507-227-1131**

[crissysengraving@gmail.com](mailto:crissysengraving@gmail.com)

30 W. Central

Springfield, MN 56087

# JOIN US IN CELEBRATING

This award is based on patients' answer to the question, "How likely would you be to recommend this provider to family and friends?" through Allina Health patient experience surveys.

Valerie  
Folkens,  
Nurse  
Practitioner

Top 25%  
in the nation



Christina  
Vogel,  
Nurse  
Practitioner

Top 10%  
in the nation

*Patient Choice Award Recipients*



Wishing you and your family **thrivent**<sup>®</sup>  
a happy New Year!

**From Redwood Financial Advisors**

[thrivent.com/redwood](https://thrivent.com/redwood)

**Redwood Falls** 809 E. Bridge St., Redwood Falls, MN 56283 • 507-637-8139

**Springfield** 12 W. Central St., Springfield, MN 56087 • 507-723-5454



SLEEPY EYE MEMORABILIA & VINTAGE MOVIE POSTER

LIVE & ONLINE

# AUCTION

Saturday, January 11<sup>th</sup>, 2025 at 10:00 am

Viewing Monday - Friday from 9:00 am to 3:00 pm @ Kerkhoff Auction



Sleepy Eye Memorabilia, Chief Sleepy Eye Memorabilia, Coke Items, Red Wing Crocks and Jugs, Vintage Sleepy Eye Postcards, Vintage Movie Posters



Note: We are pleased to offer this exceptional collection of Sleepy Eye memorabilia at public auction. We will be offering both live and internet bidding. In case of inclement weather the auction will become an on-line only auction. Check website for updates.

**LILLIAN STIMPERT & OTHERS • OWNERS**



1500 E. Bridge Street  
Redwood Falls, MN 56283  
Office - 507-644-8433  
Doug Kerkhoff - 507-829-6859  
Zac Kerkhoff - 507-829-3924



[WWW.KERKHOFFAUCTION.COM](http://WWW.KERKHOFFAUCTION.COM)



# Springfield Tigers Clothing

[www.deluxeprint.biz](http://www.deluxeprint.biz)



**Many more designs available  
Order online or contact me directly**



[www.deluxeprint.biz](http://www.deluxeprint.biz)



**STATE STREET THEATER PRESENTS**



AN AFTERNOON WITH  
**PATSY  
CLINE**  
A TRIBUTE

**Saturday,  
January 4th  
2:00 PM**

**STATE STREET THEATER PRESENTS**

Children 12  
and Under  
**FREE**

Sing & Dance with

**the  
doliPops**  
Performing LIVE!  
TheDollipops.com

**Saturday,  
January 25  
10:00 AM**

**BUDDY HOLLY:  
OH BOY!**

A Tribute with "The Big  
Bopper" & Ritchie  
Valens

**Saturday, February 1  
7:00 PM**

**Get your tickets at [statestreetnewulm.org](http://statestreetnewulm.org)  
Or call the box office 9 AM-Noon Mon.-Fri. 507-359-9990**

State Street Theater 1 N. State Street PO Box 493 New Ulm, MN 56073



# HAPPY NEW YEAR FROM MVTV WIRELESS INTERNET



As we ring in the new year, we extend our heartfelt gratitude our members and host partners for your continued trust and support. Here's to a year filled with connection, opportunity and innovation.

Thank you for letting us be a part of your 2024 journey. Wishing you and your family a safe, happy and prosperous new year.

**MVTV**

wireless  
internet provider

320.564.4807



powered by

Plume HomePass®

*'Serving customers beyond connectivity'*



# COZY UP TO A PREMIUM CHECKING ACCOUNT AT SOUTHPOINT AND EARN UP TO **2.529% APY\***.

Take advantage of this cozy rate today by visiting [bit.ly/SPFCUCheckingChamber](https://bit.ly/SPFCUCheckingChamber)

Scan the QR code to learn more!



\*APY – Annual Percentage Yield. Rates effective as of April 1, 2024. Variable rates. Rate may change after the account is open. All of our deposit accounts are protected up to \$250,000 by the National Credit Union Association (NCUA). Fees could reduce the earnings on the account. Premium Checking – \*\*Tier 1 – No requirements; \*\*\*Tier 2 – eStatements, & Direct Deposit of \$500 or more monthly; \*\*\*\*Tier 3 – eStatements, Direct Deposit of \$500 or more monthly, & 25 or more debit card purchases

CREATE MEMORIES AT THE ROTHENBERG CAMPGROUND THIS SUMMER!  
SPRINGFIELD, MN  
RESERVATIONS OPEN JANUARY 2, 2025



# Springfield Area Community Center

## ROOM RENTALS

### FIRESIDE ROOM \$250/DAY

 Seats up to  
**250 People**

### GARDEN ROOM \$125/DAY

 Seats up to  
**120 People**


### PARKVIEW ROOM \$125/DAY

 Seats up to  
**120 People**

### MULTI-PURPOSE ROOM \$100/DAY

 Seats up to  
**50 People**

### CONFERENCE ROOM \$50/DAY

 Seats up to  
**12 People**

### RESERVE TODAY!

Combination and Complete Center  
Rentals are also available!

**507-723-3517**

[communitycenter@springfieldmn.org](mailto:communitycenter@springfieldmn.org)

Seasonal Campsites available in  
2025 at Rothenberg Campground!  
Reservations open online 1-2-25!



**PEICHEL'S**  
**LAWN IRRIGATION**

**Springfield, MN**

**507-227-1919 or 507-920-7875**



# NORTHWOOD

## CHURCH

— **SPRINGFIELD** —

**Sunday morning worship service  
at 10am**

Prayer on Thursdays Noon – 1pm

Family Bible Study – Thursdays 6-7pm

**Devoted to Christ, Declaring the Truth, Driven by Love**

**507-627-2514 Website: [northwoodchurchrf.org](http://northwoodchurchrf.org)**

Northwood Church Springfield  
702 W. Central St  
Springfield, MN

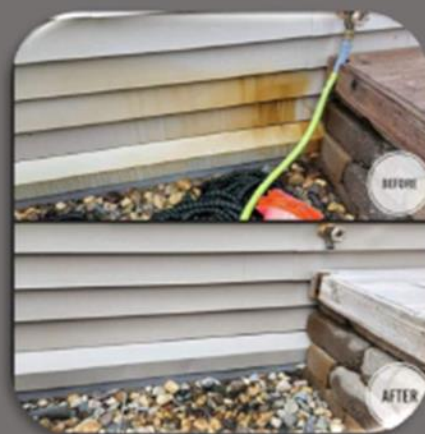
# Lund Power Washing

507-205-2580

## Our Services

- Vinyl siding
- Store fronts
- Stucco
- Roofs
- Gutters
- Decks
- Fencing
- Brick
- Pavers
- Sidewalks
- Driveways
- Patios

Also offering STAINING services!



Call or text for a **FREE QUOTE!**



It's warming up.  
Festival season is almost here!

A sneak-peek of the available designs

Add a little *Twist* to your party with *Totally Twisted* art.



Bracelets



Alien Hat



Happy Hat



Octopus Hat



Flamingo Hat



Jester Hat



Princess Wand



Penguin



Alien



Butterfly



Bunny



Kitty



Puppy



Fishing Pole



Diamond Sword



Flower



Ninja



Pony



facebook.com/TotallyTwistedEvents/



TotallyTwistedArtist@gmail.com



TotallyTwistedevents.com



(507)227-8767



# ED's Repair

SPRINGFIELD, MN

723-5985



# Jack Larson Seeds

**Your local independent  
Dekalb - Asgrow Dealer**

*We have the staff and equipment  
to service all of your seed needs year round!*

Agronomic Support and Field Scouting  
Seed Delivery to your farm or field  
CRP & Cover Crop Seed and Drilling  
Field View™ Installation and Support

**Custom  
Soybean  
Drilling  
and Air Seeding**

Custom Hydro-Seeding  
Monitor Calibrations  
Planter Prescriptions  
Drone Services



# Larson Crop Insurance

**Contact us with any  
Crop Insurance Questions**

Laurie Hoffbeck's cell ~ 507-829-8367

Jack's cell ~ 507-829-5189

Johnny's cell ~ 612-207-6542

Steve's cell ~ 507-828-3164

Evan's cell ~ 507-822-3545

Colin's cell ~ 507-430-0558

**Grow  
WITH Us**



**507-723-4302**

Available 24-7

[www.jacklarsonseeds.com](http://www.jacklarsonseeds.com)



**GLEN'S  
AUTO SUPPLY**

10 N. Marshall - Springfield

723-4257

# CLEMENTS LUMBER

INC.

SPRINGFIELD – MORGAN – COMFREY – REDWOOD FALLS  
(507)723-2230 (507)249-3122 (507)877-2026 (507)644-2100

“For all your building needs: residential, commercial, agricultural and remodeling.”

Clements Lumber is a Valspar Dealer.  
For all your paint needs!





- **Drafting & Design Service**
- **Consultation Service**

- New Homes
- Pole Buildings
- Building Additions
- Remodel/Renovations
- Kitchen Layouts
- Decks
- Garages

CR Consulting & Design  
Construction Consultation & Design.

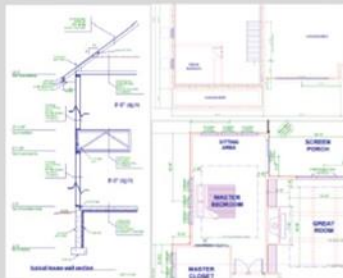
### New Home Plans



Slab on Grade



2-Story



- Elevations
- Floor Plans
- Site Plan
- Foundation Plan
- Wall Sections
- Detail Pages

### Pole Buildings



Machinery Storage Options



Shop House and Shop Office Options



Post Layouts, Wall Sections & Detail Drawings

### Kitchen Designs



3D Renderings



Floorplan Layouts

### Fee Schedule

- Upfront pricing information based on type/size of project.
- Start/Stop at any point in the Process.
- Full-size print copies provided
- PDF Digital files provided for distribution.

### Remodeling



Site Visit to map out existing floorplan

Concept drawings with options



### Decks



Our Office is located on Central Street in Springfield. Parking and customer entrance is around the rear of the home, accessed through the alley. We are open by Appointment Only.



CR Consulting & Design  
520 West Central Street  
Springfield, MN 56087  
Phone: 507.276.9611  
E-mail: crothmeier@gmail.com



# BROWN



## TREE SERVICE

- ◆ Tree Removal
- ◆ Tree Trimming
- ◆ Stump Removal
- ◆ Storm Clean Up
- ◆ Free Estimates
- ◆ 24 Hour Emergency Service
- ◆ 15 Years Experience
- ◆ Fully Licensed & Insured

## Brown Tree Service, LLC

Douglas Brown 507-220-0672

Brigette Brown 507-220-0243

[browntreeservicemn@yahoo.com](mailto:browntreeservicemn@yahoo.com)

Springfield, MN

## Springfield Chamber of Commerce

33 South Cass Avenue \*PO Box 134

Springfield, MN 56087

507-723-3508

[spfdchamber@newulmel.net](mailto:spfdchamber@newulmel.net)

[www.springfieldmnchamber.org](http://www.springfieldmnchamber.org)

Denise Gicker

Executive Director

Monday- Friday 9 am – 1 pm



Chamber Chatter is a publication of the  
Springfield Chamber of Commerce.  
It is published monthly to keep members  
and friends informed on events, activities,  
and programs in and around the community.

**Mission Statement** – The mission of the Springfield Area Chamber of Commerce/CVB is to strengthen the business community and take a leadership role in promoting economic growth in a spirit of cooperation and team work.

**Vision Statement** – Promote economic growth through the recruitment and retention of quality businesses and industries that will contribute to the overall economic health of the community. Provide the membership networking opportunities, referrals, internet promotion and other membership services to promote and enhance their business. Develop and nurture relationships with local government and other community sectors to help facilitate the needs and interests of the business community and enhance the overall quality of life within the community.

## Chamber of Commerce General Board of Directors 2024

President - Mike Granda - Farmers & Merchants State Bank

Vice President- Wendy Krier - Springfield Advance-Press

Kayla Berberich - Farmers & Merchants State Bank

Chrissy Boerboom - Friend of the Chamber

Amanda Frank - Reiner Real Estate

Rebecca Greiner - Runnings

Jill Riederer - Drs. Akre & Clark

Deb Miesen - Miesen's Color Center

Heidi Wersal - City of Springfield Representative