

CHAMBER CHATTER



July 2024

**Dates to be Determined – Summer Spotlight Online
Promotion**

**August 7th – Rescheduled Date- 16th Annual Springfield
Chamber Golf Tournament**

*Please share the Chamber Chatter Newsletter with your employees. The newsletter is also now available on the Chamber website at <https://springfieldmnchamber.org/chamber-chatter/>. It will also be posted on Facebook when the current newsletter is available on the Chamber Website.

If there are additional email addresses you would like me to add to make sure our newsletter is getting to all who are interested, please let me know by emailing me at spfdchamber@newulmtel.net and I would be happy to add them to the email list.

Thank you to everyone who attended,
organized, supported, sponsored and donated
their time and talent to Riverside Days!

See you in 2025!

June 25th-June 29th



Springfield Mugs



\$25 Each

Exclusively available at:

FOR SALE
Beginning Monday
July 8

F&M Bank
Red Rock Bank
SouthPoint Financial Credit Union
Springfield Advance Press
Springfield Chamber of Commerce

New Springfield Mugs
Made Exclusively for the Springfield
Chamber of Commerce by Willow a
16 year old artist from Minnesota's
Ivory & Sage



Limited Quantities
Available

Due to flooding, the Springfield Chamber Golf Tournament 🏌️ and the 🌮 Taco Bar have been rescheduled to Wednesday, August 7 at the [Springfield Golf Course](#)

Please contact the Chamber Office with any questions.

spfdchamber@newulmtel.net

508-723-3508

If you purchased advance sale tickets for the Taco Bar, they will be honored.

Join us in kicking off Riverside Days at the
16th Annual Springfield Chamber Golf Tournament
Wednesday, June 26th
Springfield Golf Club
9 Hole 4-Per Person Meal
(Includes 4-Per Person Meal, Lunch, and Door Prizes)
(Includes 4-Per Person Meal, Lunch, and Door Prizes)

POSTPONED
AUGUST 7th

Around the World in 9 Holes

TACO BAR
Advance Meal Tickets
(Available June 3-17): \$13
Available at Chamber Office,
F&M Bank,
SouthPoint Financial Credit Union,
& Springfield Advance-Press
At the Door: \$14

2 PM Registration
12-1 PM Lunch
1 PM Shotgun Start
Prizes & Games
to Follow

Registration Forms Available at the Chamber Office & Springfield Golf Club

Awards for 1st, 5th, & 9th place teams

Big Skins Game - 50/50 Payout
Mulligans - 1 Per Person \$5 Each
Isle Pong - 50/50 Payout
Heads & Tails Game

Open to the Public



Springfield Area Chamber of Commerce

Chamber Buck Check Policy

**Thank you for
supporting the
Springfield Area
Chamber of
Commerce
Businesses.**



Your Springfield Area Chamber Bucks are good at the CHAMBER MEMBER businesses in accordance with their check policy.

Chamber Buck checks may NOT be deposited directly into a personal bank account.

Chamber Buck checks are NOT redeemable for cash.

- Businesses will NOT offer cash back on any remaining balance.

Smaller denominations are offered at the Springfield Area Chamber of Commerce office.

Chamber Buck Checks are valid for 90 days following the issue date.

- For any checks older than 90 days, please contact the Chamber Office.

Contact Us

33 South Cass Avenue
Springfield, MN 56087
Phone: 507-723-3508
spfdchamber@newulmtel.net
springfieldmnchamber.org



507-723-3508



www.springfieldmnchamber.org

If you have any questions, contact the
Springfield Area Chamber of Commerce

***Meeting June 12th due to the Holiday**



Summer Spotlight

24 N. CASS AVE SPRINGFIELD, MN

MONDAY - FRIDAY HOURS
7:00am - 1:30pm
SATURDAY AND SUNDAY POP UP HOURS

WATCH OUR FACEBOOK AND INSTAGRAM FOR MORE DETAILS

@THELOFTNUTRITION
@THELOFTNUTRITION56087
507-766-0040



Energizing Teas Protein Balls Healthy Protein Shakes

Child Exams & Physicals

Want to relax this summer?

Allina Health Springfield & Lamberton Clinics can help with that!

Put your mind at ease by scheduling your child's exam or sports physical well in advance of school start or the 1st day of practice.

Call 507-723-6201 today to schedule an appointment.





ALWAYS
FAST
ON

A laptop is shown from a three-quarter perspective, with its screen and keyboard visible. Behind the laptop, there are vibrant, glowing light trails in shades of blue and purple, curving around the device to create a sense of motion and speed.

Download speed options
from **250 Mbps up to 1 GIG***

Whole-home WiFi
with WiFi360pro

24/7 network monitoring with
99.99%[^] proven reliability

Flexible installation schedules
and **NO TERM CONTRACTS**

844-XTREAM3

xtream.com

*Speeds may vary and may be subject to a monthly downstream usage allowance. See <https://mediacomcable.com/openinternet> for information on factors that could cause speeds to vary. [^]2024 Mediacom Executive Summary Reliability Report. Call or go online for details.

Looking for a new or redesigned WEBSITE?

We are offering a . . .

MUST COMMIT BY AUG. 31, 2024

SUMMER SPECIAL — \$79/mo

• UP TO FIVE PAGES • UP TO THREE EMAILS • RESPONSIVE SITE DESIGN • AND MUCH MORE!

WEBSITES WE HAVE DONE —

Bar-M Horses — www.barmhorses.com
BJ Video — www.bjvideowindom.com
Blue Stem Ag — www.bluestemag.com
Community Bible Church of Mt. Lake — www.cbcmountainlake.com
Cottonwood County Citizen — www.windomnews.com
Cottonwood County Fair — www.cottonwoodcountyfair.org
Cottonwood County Soil and Water — cottonwoodswcd.org
Dave's Custom Woodworking — www.davescustomwoodworking.com
Duffy's Bar & Restaurant — www.duffysmn.com
Eagle Ag — www.eagleag.com
Fairland Management — www.fairlandmgmt.com
Greater Blue Earth River Basin — www.gberba.org
Gove Acres — www.goveacres.com
Holt's Cleaning Service — www.holtscleaningservice.com
Larson's Home Furnishings — www.larsonfurniture.com
Lutheran Church of Our Savior — www.oursaviorslutheran.net
Midwest Free Community Papers — www.mfcp.org
Mt. Lake Foundation — www.mtlakefoundation.com
Mt. Lake News — www.mtlakenews.com
North Heron Lake Game Producers — www.nhlgpa.org
Northwind Great Danes — www.northwindgreatdan.es.com
PM Repair of Windom — www.pmrepairwindom.com
Remick Foundation — www.remickfoundation.com
Royal Glass of Windom — www.royalglassmn.com
Ron's Electric — www.ronselectricmn.com
Rushmore Industries — www.rushmoreindustries.com
Tri Parish Church — www.triparishcfw.org
Wellness & Vitality Chiropractic — www.wellnessvitalitychiro.com
Westbrook Mutual — www.westbrookmutual.com
Windom Area Foundation — www.windomareafoundation.com
Johnson, Tibodeau, Bottin CPA's — www.windomcpas.com
Windom Free Church — www.windomfreechurch.org
Windom Zeds Volleyball — www.windomzeds.com

ASK US ABOUT —

- Internet Marketing
- Search Engine Optimization
- Social Media Advertising
- Pay-Per-Click Advertising
- Email Marketing
- Websites

NEWLY LAUNCHED WEBSITES —



Through this variety of marketing options, we can now help businesses, large and small, that are looking to broadcast their messages even more effectively through digital and print media!

CITIZEN

Publishing Company

Powered by  **arvig**
Media

Call or email Jen today about this great offer!

507-831-3455

jenw@windomnews.com



RECENTLY ENGAGED?

**CALL THE
SPRINGFIELD
COMMUNITY CENTER
TO BOOK YOUR
WEDDING!**

Let us help you create the
wedding you've always
dreamed of!



Massage & Bodywork

Deb Wahl, CMT

507-626-0567

Call or Text for an Appointment
debs.wahl@yahoo.com



**WEDNESDAY'S ARE FOR GATHERING
AROUND THE TABLE.**

The Kitchen Table Ministry invites you to come and enjoy a meal with family and friends and maybe even make new friends!

This is open to ALL who are interested.

WHEN: Wednesdays—5:15 –6:45 p.m.

WHERE: St. Johns Lutheran Church

224 Mary Avenue

Springfield, MN

COST:

FREE





www.deluxeprint.biz



***All types of clothing,
caps & jackets***

Any quantities—large or small, we do them all
In-house screen printing, embroidery
and design services

See Us For All Your Printing Needs

**Business Cards • Letterhead • Envelopes
Labels • Raffle tickets • Notepads • Carbonless forms**

**Promotional products - key chains, pens, calendars, mugs,
can coolers, golf balls, bags, and much more**

We want to help you promote your business!!

NuFiber Internet for Business

Work Smarter.

Faster. Better.

Give Your Business the Competitive Advantage.

Local businesses like yours are the heart of the community. Nuvera fiber internet, along with our 24/7 local support, makes sure you're always up and running.

Why Nuvera?

- ✓ Enhance your productivity and efficiency with Gig + symmetrical speeds.
- ✓ Stay connected with a redundant 99% reliable network.
- ✓ Scalability to grow with your business.
- ✓ Protect sensitive data with a connection less vulnerable to hacking and interference.

Boost your business.
Sign up for fiber today!

Visit online nuvera.net/business, call **833.974.4286** or visit us at **22 S Marshall Ave, Springfield** to learn more.

SCAN ME
TO LEARN MORE



500 Mbps

➔ **\$99.99/mo**

Plus taxes and equipment fees.

Nuvera
Business

Service availability based on location. Some restrictions may apply. Prices and terms subject to change. Pricing listed is business. Contact Nuvera for residential speeds and pricing. If applicable, addresses without a fiber drop buried to their home/business may be required to pay a \$250 construction fee or commit to a 3-year service agreement.



Paint Rebate through July 7, 2024

SAVE UP TO

\$10

PER
GALLON*
ON SELECT
PRODUCTS



**JUNE 28 –
JULY 7, 2024**

All products may not be
available in all locations

INSTRUCTIONS TO REDEEM:

- Scan QR code or visit website directly
- Enter the required information to begin the submission process
- Complete the required fields and upload required documentation, including:
 - UPC (numbers below bar code on purchased product)
 - Image of receipt or invoice
- Enter in your required information (i.e., name, address, email address, etc.)
- Submit your rebate



Visit "Contact Us" tab on
consumerrebates.ppg.com
to reach out with any questions



ProLuxe



Miesen's Color Center

Downtown Springfield

(507) 723-4424

God Bless America

Good Neighbor Thrift
Hrs: Mon. 9-3, Tues. 9:30-4
Sat. 9-12
EB Good Neighbor Thrift MN
723-5778





**North Central
International**

- **Quality Parts**
- **First-Rate Service**
- **Rentals & Leasing**
- **New & Used Truck Sales**



VISIT ONE OF OUR MANY LOCATIONS

www.northcentralintl.com



Website

MANIKATO, MN
1955 HOWARD DR. W
507-625-2030

MARSHALL, MN
503 N HWY. 59
507-532-5718

MASON CITY, IA
11243 265TH ST.
641-423-6042

ALBERT LEA, MN
1900 SORENSON RD.
507-373-0653

ALEXANDRIA, MN
5791 MN HWY. 29 S
320-762-8126

CORCORAN, MN
10409 CO. RD. 101
612-473-6700

GLENCOE, MN
2425 11TH ST. E
320-864-8288

RAPID CITY, SD
2530 DEADWOOD AVE.
605-343-7575

ROCHESTER, MN
2729 WHYNAUGHT CT. SE
507-289-2361

SANBORN, MN
13067 U.S. HWY. 71
507-648-3811

SIOUX FALLS, SD
45131 N Healy Ln.
605-336-3820

SPENCER, IA
2808 4TH AVE. W.
712-262-7644

ST. CLOUD, MN
375 33RD AVE.
320-251-9511

NEW ULM, MN
3 SOMSEN ST.
507-359-9600

THE SUMMER MARKET IS HOT!



**we are here to
provide you with
professional real
estate services**

THROUGH LOCAL MARKET
KNOWLEDGE AND YEARS OF
EXPERIENCE. CALL US TO
HELP YOU BUY OR SELL!



REINER
REAL  ESTATE

5 0 7 - 7 2 3 - 5 2 3 3

S P R I N G F I E L D



WWW.REINERRE.COM
30 W CENTRAL, SPRINGFIELD



Take me out to the ball game!!

Join F&M Getaways when we travel to Target Field!



Wednesday, August 14th
vs. Kansas City Royals
First pitch 12:10 pm



- FULL PAYMENT IS DUE AT REGISTRATION -

F&M Customer	\$130.00	Non-Customer	\$145.00
--------------	----------	--------------	----------

INCLUDES: Admission, snack, pre-game tour of Target Field, pre-game warmups and coach bus.

- Last date to sign up is July 17, 2024.
- Lunch on your own at the ballpark.
- Fees non-refundable unless you replace yourself.
- Travelers under the age of 18 must be accompanied by an adult.
- Everyone is welcome! Need not be a customer of F&M Bank.

DEPARTURE: Springfield – St. John's Church at 6:00 am
Morgan – Vernon Park at 6:15 am

****Target Field is cashless so please plan ahead****



*F&M Getaways acts only in the capacity of an agent for travelers in all matters pertaining to hotel accommodations, sightseeing tours and transportation by motorcoach and is not to be held responsible for any damage, expense or inconvenience caused by itinerary schedule changes, nor for loss, injury or damage to any person or property, from any cause whatsoever, including parked vehicles while on an F&M Getaways tour. The right is reserved to decline or to accept or retain any person as a member of this tour.

Exploring the Music Cities

October 28 – November 4, 2024

Nashville - Memphis

- Guided tours of Nashville and Memphis
- Johnny Cash's Hideaway Farm
- Country Music Hall of Fame
- Private Songwriter Performance
- Ryman Auditorium
- Grand Ole Opry Performance
- Sun Studio
- Elvis Experience at Graceland
- Beale Street
- And more!!



DOWN PAYMENT OF \$1,000.00 IS DUE AT REGISTRATION – FINAL PAYMENT DUE SEPTEMBER 6, 2024

F&M Customer Pricing		Non-Customer Pricing	
Double occupancy	\$2,870.00	Double occupancy	\$2,995.00
Single occupancy	\$3,680.00	Single occupancy	\$3,805.00
-Other occupancy pricing available upon request-			

INCLUDES: Coach bus, 18 meals, all admissions, gratuities, and snacks; accommodations at Drury Plaza, The Guest House at Graceland and Opryland Hotel. Last day to sign up is September 6, 2024. Fees non-refundable unless you replace yourself. Travelers under the age of 18 must be accompanied by an adult. Any traveler that requires special assistance must have a travel companion. Travel insurance is available, ask us for details. Everyone is welcome! Need not be a customer of F&M Bank.

Space is limited. Register today!

*F&M Getaways acts only in the capacity of an agent for travelers in all matters pertaining to hotel accommodations, sightseeing tours and transportation by motorcoach and is not to be held responsible for any damage, expense or inconvenience caused by itinerary schedule changes, nor for loss, injury or damage to any person or property, from any cause whatsoever, including parked vehicles while on an F&M Getaways tour. The right is reserved to decline or to accept or retain any person as a member of this tour.



F&M
BANK

Building Relationships.
Making a Difference.

Springfield 507.723.4800 | Morgan 507.249.3166 | fmb-ebank.com

Equal Housing Lender

Member FDIC

Loyalty | Trusted Advisor | Experience | Local Ownership | Community Commitment

Need money?

Talk with our local,
personal lending
team!



F&M
B A N K

Springfield/Morgan
fmb-ebank.com

 Equal Housing Lender | Member FDIC



*Crissy's Engraving
& Gifts*

507-227-1131

crissysengraving@gmail.com



State Street Theater Presents

JOSEPH AND THE AMAZING TECHNICOLOP DREAMCOAT

LYRICS BY
TIM RICE

MUSIC BY
ANDREW LLOYD WEBBER

Friday, July 26 at 7PM
Saturday, July 27 at 7PM
Sunday, July 28 at 2PM

Viernes 26 de Julio a las 19:00 horas
Sábado 27 de Julio a las 19:00 horas
Domingo 28 de Julio a las 14:00 horas

Tickets:

\$20 in advance • \$25 at the door*

*There is a \$1 system processing fee for each ticket.

**PURCHASE ADVANCE TICKETS AT
STATESTREETNEWULM.ORG**

or at the Theater Box Office, door #7 located at
the rear of the theater, Monday thru Friday
from 9 am to noon or call 507-359-9990

Doors open 30 min. prior to performance.

Parking lot located on corner of Washington and Center Streets.

Entradas:

\$20 anticipadas • \$25 en puerta*

*La tarifa de procesamiento del sistema es de 1\$ por cada boleto.

**Compra las entradas anticipadas en
STATESTREETNEWULM.ORG**

o en la oficina del teatro, Puerta #7, situada en la parte
trasera del teatro, de lunes a viernes de
9 am a mediodía o al teléfono 507-359-9990

Las puertas abren 30 minutos antes de la actuación.

Estacionamiento en la esquina de las calles Washington y Center.



STATE STREET THEATER | 1 N. STATE STREET | PO BOX 493 | NEW ULM
507.359.9990 | WWW.STATESTREETNEWULM.ORG



Redwood Financial Advisors

thrivent®

Your business— our solutions

You've worked long and hard to get your business to where it is today. Have you thought about what would happen if something unexpected happened, like losing a critical employee?

At Redwood Financial Advisors, we offer solutions to help meet your business needs—so you can protect and strengthen what you've built with comprehensive insurance solutions and retirement strategies designed for your business and your future.

Contact us today to learn more

Nancy Hansen, Financial Advisor • Kelly Pierson, Insurance Associate

507-723-5454 • thrivent.com/redwood • 12 W. Central, Springfield, MN 56087



Thrivent is the marketing name for Thrivent Financial for Lutherans. Insurance products issued by Thrivent. Not available in all states. Securities and investment advisory services offered through Thrivent Investment Management Inc., a registered investment adviser, member FINRA and SIPC, and a subsidiary of Thrivent. Licensed agent/producer of Thrivent. Registered representative of Thrivent Investment Management Inc. Thrivent.com/disclosures.

Insurance products, securities and investment advisory services are provided by appropriately appointed and licensed financial advisors and professionals. Only individuals who are financial advisors are credentialed to provide investment advisory services.

5420161.2



MVTV

wireless
internet provider

Broadband Internet & Farm Connectivity Services

**Fast,
Affordable,
&
Dependable.**

**No
Contracts
&
No Hidden
Fees!**

- **Managed Farm Network**
(works with all internet service providers)
- **Managed Wi-Fi Service**
- **Superior Local Technical Support**
- **Top Notch Customer Service**
- **Maintained Network Built on Integrity**

**Worry Free
Connectivity**

www.mvtvwireless.com 320-564-4807

Call for a **FREE**
Serviceability check

IT'S CHRYSLER PACIFICA SEASON



Boy Moms need room for all the
Boys' Stuff!

*Stop in
today!*

JENSEN
Chrysler • Dodge • Jeep • RAM
2403 S Broadway St • New Ulm, MN
(507) 354-3410 • (800) 976-2329
www.jensenmotors.com



SUNNY Days, SUNNY Savings!



**1.000%
APY***

Min: \$10,000.00
Max: \$49,999.99

**1.500%
APY***

Min: \$50,000.00
Max: \$99,999.99

**2.500%
APY***

Min: \$100,000.00
Max: \$249,999.99

**3.000%
APY***

Min: \$250,000.00
Max: \$999,999.99

**4.000%
APY***

Min: \$1,000,000.00



Take advantage of our new and improved Premium Savings rates by stopping into any of our branch locations, visiting us online at <https://bit.ly/SunnySavings2024>, or scanning the QR Code.

*APY = Annual Percentage Yield. Rates effective as of May 28, 2024.
Fees may reduce earnings on the account.
Federally Insured by NCUA.

SouthPoint
Financial Credit Union
EMPOWERING PEOPLE TO ENHANCE LIVES.



ST. JOHN'S
CIRCLE OF CARE
A TRADITION ... FOR ALL AGES

4TH ANNUAL

TRIGGER TOURNAMENT

POSTPONED
UNTIL SUNDAY JULY 28TH

LOCATED AT:

**SPRINGFIELD
SPORTSMANS CLUB**

REGISTRATION

\$325

PER TEAM

**TEAMS LIMITED
TO 5 SHOOTERS**

**LIMITED SLOTS
AVAILABLE, SO
DON'T MISS YOUR
CHANCE TO BE
PART OF THIS
SHOOTING
EXTRAVAGANZA
BENEFITING
ST. JOHN'S CIRCLE
OF CARE!**

FOR REGISTRATION OR MORE INFORMATION:

CALL MANDI AT (507)723.3200

OR EMAIL MANDIS@SJLHOME.COM



1914 POPCORN WAGON



2024 Schedule

Open 10 a.m. – 5 p.m.

Sat., May 25 | Memorial Day Weekend

Mon., June 3 | NUPL Summer Reading Program Begins

Sat., June 22 | “Between the Breweries” NU 170th Event

Sat., July 20 | Bavarian Blast

Sat., July 27 | Crazy Days

Sat., Aug. 3 | Spikin’ in the Street

Sat., Aug. 31 | Labor Day Weekend

Sat., Sept. 14 | Popcorn Wagon 110th Birthday

Sat., Oct. 5 | Oktoberfest

Sat., Oct. 12 | Oktoberfest

Sponsored By: Bank Midwest

Part of New Ulm’s history since 1914, the popcorn wagon is located in front of the museum at 2 N. Broadway. All proceeds benefit the Brown County Historical Society.



It's warming up.
Festival season is almost here!

A break-peek of the
available designs

Add a little *Twist* to your party
with *Totally Twisted* art.



Bracelets



Alien Hat



Happy Hat



Octopus Hat



Flamingo Hat



Jester Hat



Princess Wand



Penguin



Alien



Butterfly



Bunny



Kitty



Puppy



Fishing Pole



Diamond Sword



Flower



Ninja



Pony



facebook.com/TotallyTwistedEvents/



TotallyTwistedArtist@gmail.com



TotallyTwistedevents.com



(507)227-8767



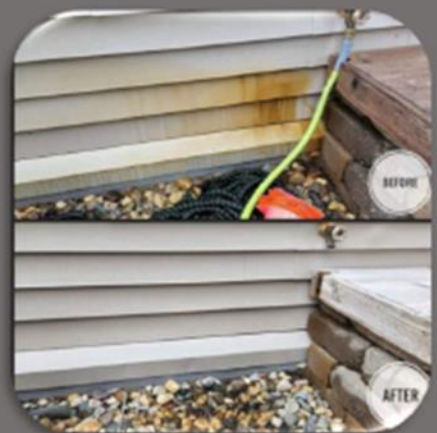
Lund Power Washing

507-205-2580

Our Services

- Vinyl siding
- Store fronts
- Stucco
- Roofs
- Gutters
- Decks
- Fencing
- Brick
- Pavers
- Sidewalks
- Driveways
- Patios

Also offering STAINING services!



Call or text for a **FREE QUOTE!**

Remember...

the **Springfield Advance-Press** is available
at Springfield Handi Mart, Expressway,
Springfield Market, Thrifty White Pharmacy
and the Advance-Press office

The Springfield
Advance-Press
is also available
by subscription
thru the mail or online.

*The only publication
in the world devoted
exclusively to the best
interests of Springfield.*



Springfield Advance-Press

13 S. Marshall Ave | 8:30 a.m. - 5:00 p.m. M-F | 507-723-4225
www.springfieldap.com | creative@springfieldap.com

Jack Larson Seeds

**Your local independent
Dekalb - Asgrow Dealer**

*We have the staff and equipment
to service all of your seed needs year round!*

Agronomic Support and Field Scouting
Seed Delivery to your farm or field
CRP & Cover Crop Seed and Drilling
Field View™ Installation and Support

**Custom
Soybean
Drilling
and Air Seeding**

Custom Hydro-Seeding
Monitor Calibrations
Planter Prescriptions
Drone Services



507-723-4302

Larson Crop Insurance

**Contact us with any
Crop Insurance Questions**

Laurie Hoffbeck's cell ~ 507-829-8367

Jack's cell ~ 507-829-5189

Johnny's cell ~ 612-207-6542

Steve's cell ~ 507-828-3164

Evan's cell ~ 507-822-3545

Colin's cell ~ 507-430-0558

**Grow
WITH Us**



Available 24-7

www.jacklarsonseeds.com



**GLEN'S
AUTO SUPPLY**
10 N. Marshall - Springfield
723-4257

CLEMENTS LUMBER INC.

SPRINGFIELD – MORGAN – COMFREY – REDWOOD FALLS
(507)723-2230 (507)249-3122 (507)877-2026 (507)644-2100

"For all your building needs: residential, commercial, agricultural and remodeling."

Clements Lumber is a Valspar Dealer.
For all your paint needs!





- **Drafting & Design Service**
- **Consultation Service**

New Homes
Pole Buildings
Building Additions
Remodel/Renovations
Kitchen Layouts
Decks
Garages

CR Consulting & Design
Construction Consultation & Design.

New Home Plans



Slab on Grade



2-Story



Elevations Foundation Plan
Floor Plans Wall Sections
Site Plan Detail Pages

Pole Buildings



Machinery Storage Options



Shop House and Shop Office Options



Post Layouts, Wall Sections & Detail Drawings

Kitchen Designs



3D Renderings



Floorplan Layouts

Fee Schedule

- Upfront pricing information based on type/size of project.
- Start/Stop at any point in the Process.
- Full-size print copies provided
- PDF Digital files provided for distribution.

Remodeling



Site Visit to map out existing floorplan

Concept drawings with options



Decks



Our Office is located on Central Street in Springfield. Parking and customer entrance is around the rear of the home, accessed through the alley. We are open by Appointment Only.



CR Consulting & Design
520 West Central Street
Springfield, MN 56087
Phone: 507.276.9611
E-mail: crothmeier@gmail.com



BROWN



TREE SERVICE

- ♦ Tree Removal
- ♦ Tree Trimming
- ♦ Stump Removal
- ♦ Storm Clean Up
- ♦ Free Estimates
- ♦ 24 Hour Emergency Service
- ♦ 15 Years Experience
- ♦ Fully Licensed & Insured

Brown Tree Service, LLC

Douglas Brown 507-220-0672

Brigette Brown 507-220-0243

browntreeservicemn@yahoo.com

Springfield, MN

Springfield Chamber of Commerce

33 South Cass Avenue *PO Box 134

Springfield, MN 56087

507-723-3508

spfdchamber@newulmel.net

www.springfieldmnchamber.org

Denise Gicker

Executive Director

Monday- Friday 9 am – 1 pm



Chamber Chatter is a publication of the
Springfield Chamber of Commerce.
It is published monthly to keep members
and friends informed on events, activities,
and programs in and around the community.

Mission Statement – The mission of the Springfield Area Chamber of Commerce/CVB is to strengthen the business community and take a leadership role in promoting economic growth in a spirit of cooperation and team work.

Vision Statement – Promote economic growth through the recruitment and retention of quality businesses and industries that will contribute to the overall economic health of the community. Provide the membership networking opportunities, referrals, internet promotion and other membership services to promote and enhance their business. Develop and nurture relationships with local government and other community sectors to help facilitate the needs and interests of the business community and enhance the overall quality of life within the community.

Chamber of Commerce General Board of Directors 2024

President - Mike Granda - Farmers & Merchants State Bank

Vice President- Wendy Krier - Springfield Advance-Press

Kayla Berberich - Farmers & Merchants State Bank

Chrissy Boerboom - Friend of the Chamber

Amanda Frank - Reiner Real Estate

Rebecca Greiner - Runnings

Jill Riederer - Drs. Akre & Clark

Deb Miesen - Miesen's Color Center

Heidi Wersal - City of Springfield Representative