

## Redwood Financial Advisors



### Your business— our solutions

You've worked long and hard to get your business to where it is today. Have you thought about what would happen if something unexpected happened, like losing a critical employee?

At Redwood Financial Advisors, we offer solutions to help meet your business needs—so you can protect and strengthen what you've built with comprehensive insurance solutions and retirement strategies designed for your business and your future.

Contact us today to learn more

**Nancy Hansen, Financial Advisor • Kelly Pierson, Insurance Associate**

507-723-5454 • [thrivent.com/redwood](http://thrivent.com/redwood) • 12 W. Central, Springfield, MN 56087

Thrivent is the marketing name for Thrivent Financial for Lutherans. Insurance products issued by Thrivent. Not available in all states. Securities and investment advisory services offered through Thrivent Investment Management Inc., a registered investment adviser, member FINRA and SIPC, and a subsidiary of Thrivent. Licensed agent/producer of Thrivent. Registered representative of Thrivent Investment Management Inc. [Thrivent.com/disclosures](http://Thrivent.com/disclosures).

Insurance products, securities and investment advisory services are provided by appropriately appointed and licensed financial advisors and professionals. Only individuals who are financial advisors are credentialed to provide investment advisory services.

5420161.2



*Good Neighbor Thrift*  
*Mon. 9-3*  
*Tues.-Fri. 9:30-4*  
*Sat. 9-12*







Interested candidates can send a cover letter, personal resume', and two letters of recommendation to Mrs. Steffl at [principal@straphaelpk-6.com](mailto:principal@straphaelpk-6.com).

## WE ARE HIRING PRESCHOOL TEACHER

We are looking for an awesome preschool teacher! Ideal candidates would have education in teaching and/or child development along with experience working with young children. Preferred candidates would have a passion for passing on the faith, love children, and be a great communicator.



# WE'RE HIRING

## 6TH GRADE TEACHER



Ideal candidates would have a Minnesota teaching license or be eligible for one, have training or experience teaching older students and helping prepare them for middle school. Preferred candidates would have a passion for passing on the faith, love working with children, and be a superior communicator. Interested candidates can send a cover letter, personal resume', and two letters of recommendation to Mrs. Steffl at [principal@straphaelpk-6.com](mailto:principal@straphaelpk-6.com).







Save The Date

ST. RAPHAEL CATHOLIC SCHOOL

**“A NIGHT IN HAVANA”  
FUNDRAISER**

05.31.2024



# + Diabetic Education Services

at Allina Health Springfield Clinic.

Gain knowledge about a broad range of topics affecting diabetes management.



Appointments | Learn More

(507) 723-6201

[allinahealth.org/springfield](http://allinahealth.org/springfield)

Allina Health 



# The Speed You Need to Get Things Done.

Nuvera's fiber network means a strong, steady connection your employees and customers can rely on.



Maximize your company's productivity with blazing fast symmetrical download and upload speeds, plus a 99% reliable network.



**500 Mbps**  
➔ **\$99.99/mo**

Plus taxes and equipment fees.



**1 Gig**  
➔ **\$199.99/mo**

Plus taxes and equipment fees.



**2 Gig**  
➔ **\$299.99/mo**

Plus taxes and equipment fees.

## Why NuFiber from Nuvera?

### Productivity:

Enhance your productivity with Gig+ symmetrical speeds.

### Reliability:

A redundant 99% reliable network means connectivity that won't disappoint at peak times.

### Scalability:

Easily scalable to meet your growing business needs.

### Security:

A safe connection less vulnerable to tampering, vital for handling sensitive data.

## Why Nuvera?

- ✓ No data caps or overage fees.
- ✓ Straightforward pricing with no surprise increases.
- ✓ Local expert customer and technical support that are here when you need us.

**Start the Switch!** Our team of experts will work with you to choose the best plan to fit your business' needs.

## Get Nuvera Fiber!

Call **833.974.4286**, visit online **[nuvera.net/business/internet](https://nuvera.net/business/internet)** or visit us at **22 S Marshall Ave, Springfield** to learn more.

SCAN ME  
TO LEARN MORE



Service availability based on location. Some restrictions may apply. Prices and terms subject to change. Pricing listed is business. Contact Nuvera for residential speeds and pricing. If applicable, addresses without a fiber drop buried to their home/business may be required to pay a \$250 construction fee or commit to a 3-year service agreement.





## Broadband Internet & Farm Connectivity Services

**Fast,  
Affordable,  
&  
Dependable.**

**No  
Contracts  
&  
No Hidden  
Fees!**

- Managed Farm Network  
(works with all internet service providers)
- Managed Wi-Fi Service
- Superior Local Technical Support
- Top Notch Customer Service
- Maintained Network Built on Integrity

**Worry Free  
Connectivity**

**www.mvtvwireless.com 320-564-4807**

Call for a FREE  
Serviceability check

Mark your calendars!! Summer Reading Program "Adventure Begins at Your Library" begins Monday, May 20! Watch your child's backpack for information or stop at the Springfield Public Library!





Check out these upcoming events, happening live on the stage at State Street Theater in New Ulm!



Live Music  
by Philip  
Daniel  
Pianist &  
Composer  
Sat. May 18  
at 7 pm



Simon &  
Garfunkel  
Tribute  
Concert,  
Sat.  
Sep. 28  
at 7 pm



**TICKETS AVAILABLE AT [STATESTREETNEWULM.ORG](http://STATESTREETNEWULM.ORG)**

or at the theater box office, located at the rear of the theater, off of Washington & Center Streets, New Ulm, door #7, Mon through Fri, 9 am to noon, or call 507-359-9990



**GLEN'S  
AUTO SUPPLY**  
10 N. Marshall - Springfield  
723-4257



TO THE RIGHT  
OF THE  
FIRE STATION!



*FOLLOW US  
FOR UPDATES!*

@THELOFTNUTRITION56087



@THELOFTNUTRITION

24 NORTH CASS AVE  
SPRINGFIELD, MN 56087  
507.766.0040

*WE ARE OPEN*

MONDAY	7AM - 1:30PM
TUESDAY	7AM - 1:30PM
WEDNESDAY	7AM - 1:30PM
THURSDAY	7AM - 5PM
FRIDAY	7AM - 1:30PM

**SHOW THIS FLYER FOR \$1 OFF  
YOUR NEXT VISIT!**



MEAL REPLACEMENT SHAKES - ENERGIZING TEAS  
PROTEIN COFFEE - PRE AND POST WORKOUT PRODUCTS  
WELLNESS COACHING - MEAL PLANNING

**ASK US ABOUT DELIVERY OPTIONS!!!**



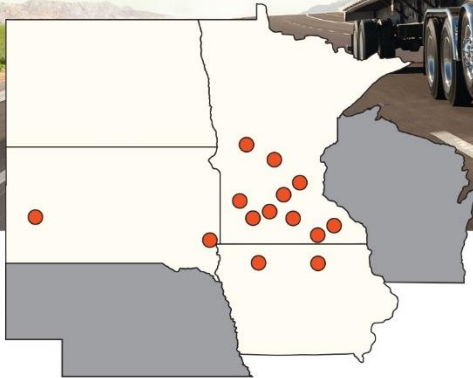
**NUTRITION TO FUEL THE BODY & LIVE YOUR BEST LIFE!**

**SEE YOU SO SOON AT YOUR FAVORITE HEALTHY, HAPPY PLACE!**



**North Central  
International**

- First-Rate Service
- Quality Parts
- New & Used Truck Sales
- Rentals & Leasing



**VISIT ONE OF OUR MANY LOCATIONS**

[www.northcentralintl.com](http://www.northcentralintl.com)



Website

**ALBERT LEA, MN**  
1900 SORENSON RD.  
507-373-0653

**ALEXANDRIA, MN**  
5791 MN HWY. 29 S  
320-762-8126

**CORCORAN, MN**  
10409 CO. RD. 101  
612-473-6700

**GLENCOE, MN**  
2825 11TH ST. E  
320-864-8288

**MANKATO, MN**  
1955 HOWARD DR. W  
507-625-2030

**MARSHALL, MN**  
503 N HWY. 59  
507-532-5718

**MASON CITY, IA**  
11243 265TH ST.  
641-423-6042

**NEW ULM, MN**  
3 SOMSEN ST.  
507-359-9600

**RAPID CITY, SD**  
2530 DEADWOOD AVE.  
605-343-7575

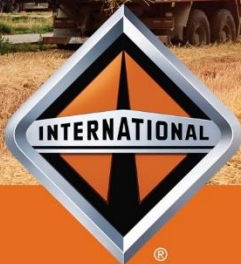
**ROCHESTER, MN**  
2729 WHYNAUGHT CT. SE  
507-289-2361

**SANBORN, MN**  
13067 U.S. HWY. 71  
507-648-3811

**SIoux FALLS, SD**  
45131 N HEALY LN.  
605-336-3820

**SPENCER, IA**  
2808 4TH AVE. W.  
712-262-7644

**ST. CLOUD, MN**  
375 33RD AVE.  
320-251-9511



[www.northcentralintl.com](http://www.northcentralintl.com)



I need a **local** space to...



NETWORK

**CELEBRATE**

SUPPORT



*Springfield Area*  
COMMUNITY CENTER

**CELEBRATE LOCAL**



# *Springfield Area Community Center*

## **ROOM RENTALS**

### **FIRESIDE ROOM**



Seats up to  
**250 People**

### **GARDEN ROOM**



Seats up to  
**120 People**

### **PARKVIEW ROOM**



Seats up to  
**120 People**

### **MULTI-PURPOSE ROOM**



Seats up to  
**50 People**

### **CONFERENCE ROOM**



Seats up to  
**12 People**

### **RESERVE TODAY!**

Combination and Complete Center  
Rentals are also available!

**507-723-3517**

[communitycenter@springfieldmn.org](mailto:communitycenter@springfieldmn.org)



# May 2024

April '24							June '24						
S	M	T	W	T	F	S	S	M	T	W	T	F	S
	1	2	3	4	5	6							1
7	8	9	10	11	12	13	2	3	4	5	6	7	8
14	15	16	17	18	19	20	9	10	11	12	13	14	15
21	22	23	24	25	26	27	16	17	18	19	20	21	22
28	29	30					23	24	25	26	27	28	29
							30						

Sunday	Monday	Tuesday	Wednesday	Thursday	Friday	Saturday
28	29	30	1	2	3	4
5	6 KABOBS WITH RICE & VEGGIE CHICKEN STUFFING HOTDISH	7 WALKING TACOS LOADED NACHOS SALISBURY STEAK	8 ASIAN ENTREES HOMEMADE RUEBENS STUFFED PEPPERS	9 ROAST BEEF HOMEMADE SANDWICHES	10 BEEF COMMERCIALS ASSORTED BURGERS TURKEY DINNER	11
12	13 HOMEMADE MEATLOAF ITALIAN PASTA	14 WALKING TACOS LOADED NACHOS HOMEMADE GOULASH	15 ASIAN ENTREES TATER TOT HOTDISH	16 ROAST PORK LASAGNA	17 ASSORTED BURGERS TURKEY COMMERCIALS	18
19	20 KABOBS WITH RICE & VEGGIE CHICKEN STUFFING HOTDISH	21 WALKING TACOS LOADED NACHOS SALISBURY STEAK	22 ASIAN ENTREES HOMEMADE RUEBENS STUFFED PEPPERS	23 ROAST BEEF HOMEMADE SANDWICHES	24 BEEF COMMERCIALS ASSORTED BURGERS TURKEY DINNER	25
26	27 HOMEMADE MEATLOAF ITALIAN PASTA	28 WALKING TACOS LOADED NACHOS HOMEMADE GOULASH	29 ASIAN ENTREES TATER TOT HOTDISH	30 ROAST PORK LASAGNA	31 ASSORTED BURGERS TURKEY COMMERCIAL	1
2	3 KABOBS WITH RICE & VEGGIE CHICKEN STUFFING HOTDISH	Notes				

Calendar Templates by Vertex42  
<https://www.vertex42.com/calendars/>





It's warming up.  
Festival season is almost here!

A sneak-peek of the  
available designs

Add a little *Twist* to your party  
with *Totally Twisted* art.



Bracelets



Alien Hat



Happy Hat



Octopus Hat



Flamingo Hat



Jester Hat



Princess Wand



Penguin



Alien



Butterfly



Bunny



Kitty



Puppy



Fishing Pole



Diamond Sword



Flower



Ninja



Pony



facebook.com/TotallyTwistedEvents/



TotallyTwistedArtist@gmail.com



TotallyTwistedevents.com



(507)227-8767





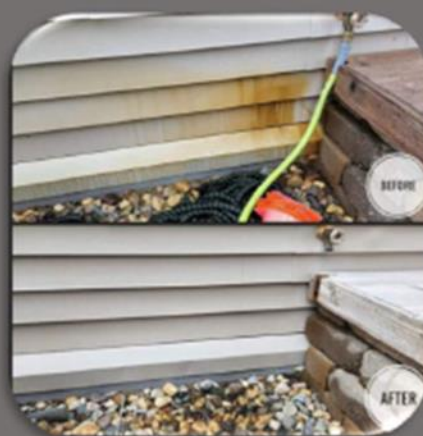
# Lund Power Washing

507-205-2580

## Our Services

- Vinyl siding
- Store fronts
- Stucco
- Roofs
- Gutters
- Decks
- Fencing
- Brick
- Pavers
- Sidewalks
- Driveways
- Patios

Also offering STAINING services!



Call or text for a **FREE QUOTE!**

# DOWNTOWN ESTATES

102 LINCOLN STREET SPRINGFIELD, MN 56087



Elderly designated units (62+ years or disabled)

Free guest apartment for family

On-call caretaker and maintenance

Community room with full kitchen

Meals delivered by Meals On Wheels

Weekly and monthly resident activities

**Call 507-327-2137  
to schedule a tour!**

SCAN THE QR CODE  
TO VIEW OUR WEBSITE  
& SEE MORE!



## RENT RATES:

**1 BR: STARTING AT \$0 - \$605**

BASED ON INCOME IF YOU QUALIFY FOR RENTAL ASSISTANCE



**SMRMANAGEMENT**  
*A Professional Apartment Management Company*





# Remember...

the **Springfield Advance-Press** is available  
at Springfield Handi Mart, Expressway,  
Springfield Market, Thrifty White Pharmacy  
and the Advance-Press office

The Springfield  
Advance-Press  
is also available  
by subscription  
thru the mail or online.

*The only publication  
in the world devoted  
exclusively to the best  
interests of Springfield.*



## Springfield Advance-Press

13 S. Marshall Ave | 8:30 a.m. - 5:00 p.m. M-F | 507-723-4225  
[www.springfieldap.com](http://www.springfieldap.com) | [creative@springfieldap.com](mailto:creative@springfieldap.com)





**DODGE // Jeep**  **Kawasaki**

[www.JensenMotors.com](http://www.JensenMotors.com)  
[www.JensenChryslerDodgeJeepRAM.com](http://www.JensenChryslerDodgeJeepRAM.com)

## Jack Larson Seeds

**Your local independent  
Dekalb - Asgrow Dealer**

*We have the staff and equipment  
to service all of your seed needs year round!*

Agronomic Support and Field Scouting  
Seed Delivery to your farm or field  
CRP & Cover Crop Seed and Drilling  
Field View™ Installation and Support

**Custom  
Soybean  
Drilling  
and Air Seeding**

Custom Hydro-Seeding  
Monitor Calibrations  
Planter Prescriptions  
Drone Services



**Grow  
WITH Us**



**507-723-4302**

**Available 24-7**  
[www.jacklarsonseeds.com](http://www.jacklarsonseeds.com)

## Larson Crop Insurance

**Contact us with any  
Crop Insurance Questions**

Laurie Hoffbeck's cell ~ 507-829-8367

Jack's cell ~ 507-829-5189

Johnny's cell ~ 612-207-6542

Steve's cell ~ 507-828-3164

Evan's cell ~ 507-822-3545

Colin's cell ~ 507-430-0558

# CLEMENTS LUMBER

INC.

SPRINGFIELD – MORGAN – COMFREY – REDWOOD FALLS

(507)723-2230 (507)249-3122 (507)877-2026 (507)644-2100

"For all your building needs: residential, commercial, agricultural and remodeling."

Clements Lumber is a Valspar Dealer.  
For all your paint needs!







- **Drafting & Design Service**
- **Consultation Service**

New Homes  
Pole Buildings  
Building Additions  
Remodel/Renovations  
Kitchen Layouts  
Decks  
Garages

CR Consulting & Design  
Construction Consultation & Design.

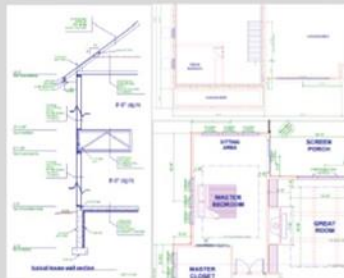
## New Home Plans



Slab on Grade



2-Story



Elevations Foundation Plan  
Floor Plans Wall Sections  
Site Plan Detail Pages

## Pole Buildings



Machinery Storage Options



Shop House and Shop Office Options



Post Layouts, Wall Sections & Detail Drawings

## Kitchen Designs



3D Renderings



Floorplan Layouts

## Fee Schedule

- Upfront pricing information based on type/size of project.
- Start/Stop at any point in the Process.
- Full-size print copies provided
- PDF Digital files provided for distribution.

## Remodeling



Site Visit to map out existing floorplan

Concept drawings with options



## Decks



Our Office is located on Central Street in Springfield. Parking and customer entrance is around the rear of the home, accessed through the alley. We are open by Appointment Only.



CR Consulting & Design  
520 West Central Street  
Springfield, MN 56087  
Phone: 507.276.9611  
E-mail: crothmeier@gmail.com



# BROWN



Est.

2021

## TREE SERVICE

- ♦ Tree Removal
- ♦ Tree Trimming
- ♦ Stump Removal
- ♦ Storm Clean Up
- ♦ Free Estimates
- ♦ 24 Hour Emergency Service
- ♦ 15 Years Experience
- ♦ Fully Licensed & Insured

## Brown Tree Service, LLC

Douglas Brown 507-220-0672

Brigette Brown 507-220-0243

browntreeservicemn@yahoo.com

Springfield, MN



## Springfield Chamber of Commerce

33 South Cass Avenue \*PO Box 134

Springfield, MN 56087

507-723-3508

[spfdchamber@newulmel.net](mailto:spfdchamber@newulmel.net)

[www.springfieldmnchamber.org](http://www.springfieldmnchamber.org)

Denise Gicker

Executive Director

Monday- Friday 9 am – 1 pm



Chamber Chatter is a publication of the  
Springfield Chamber of Commerce.  
It is published monthly to keep members  
and friends informed on events, activities,  
and programs in and around the community.

**Mission Statement** – The mission of the Springfield Area Chamber of Commerce/CVB is to strengthen the business community and take a leadership role in promoting economic growth in a spirit of cooperation and team work.

**Vision Statement** – Promote economic growth through the recruitment and retention of quality businesses and industries that will contribute to the overall economic health of the community. Provide the membership networking opportunities, referrals, internet promotion and other membership services to promote and enhance their business. Develop and nurture relationships with local government and other community sectors to help facilitate the needs and interests of the business community and enhance the overall quality of life within the community.

## Chamber of Commerce General Board of Directors 2024

President - Mike Granda - Farmers & Merchants State Bank

Vice President- Wendy Krier - Springfield Advance-Press

Kayla Berberich - Farmers & Merchants State Bank

Chrissy Boerboom - Friend of the Chamber

Amanda Frank - Reiner Real Estate

Jill Riederer - Drs. Akre & Clark

Max Wigg - Runnings

Deb Miesen - Miesen's Color Center

Heidi Wersal - City of Springfield Representative