



Cole Kircher, DO

GENERAL SURGERY

Interests:

General Surgery
Minimally Invasive Surgery
High Quality Surgical Care



Lance Deeter, DO

FAMILY MEDICINE

Interests:

Adult & Adolescent health
Preventive medicine
Manipulation procedure

Accepting Patients in Springfield

allinahealth.org/springfield

Allina Health 



powered by
Plume HomePass®

320-564-4807
mvtvwireless.com

'Serving customers beyond connectivity'

Residential Broadband Internet Services

Membership, standard installation & activation = \$114.95

SPEED	PER MONTH
up to 6 Mbps.....	\$39.95/month
up to 10 Mbps.....	\$49.95/month
up to 25 Mbps.....	\$59.95/month
up to 50 Mbps*.....	\$79.95/month

**Where available and subject to serviceability check.*

Commercial Broadband Internet Services

Membership, standard installation and activation = \$164.95

Prioritized Service

SPEED	PER MONTH
up to 15 Mbps.....	\$87.95/month
up to 25 Mbps.....	\$162.95/month
up to 50 Mbps.....	\$212.95/month
up to 100 Mbps.....	\$462.95/month*

**Where available and subject to serviceability check.*



MVTV's Managed Farm Network service optimizes your grain and livestock management for a more responsive and worry-free operation. We offer rapid deployment, by local licensed experts, for easy connectivity of your surveillance cameras, sensors, scanners and everything in between...

Leave the 'how' to us!

For information, go to:



MVTV Wireless Internet Provider



www.mvtvwireless.com

Managed Wi-Fi Network

1 SuperPod.....	\$10/month
2 SuperPods.....	\$14/month
3 SuperPods.....	\$18/month

FULL-SERVICE BROADBAND INTERNET PROVIDER

Show your Support for the Springfield Tigers Basketball & Wrestling teams



Order online or contact me directly



www.deluxeprint.biz



Holiday Village Display: 40 Years of the Menzel Christmas Village and Pearl Roiger's New Ulm Village

This year we have a special display celebrating the 40th Anniversary exhibition of the Menzel Christmas Village as well as a homemade Christmas village created by Pearl Roiger.

In 1983, Louise Menzel loaned her Christmas Village to the Brown County Historical Society for display. The village was an immediate hit and has been displayed at our museum nearly every year since then. Louise began collecting the first village pieces in 1937 after her marriage to Walter Menzel. The couple frequently traveled and collected the pieces of the village from the locations they visited, including Czechoslovakia, England, Japan, Germany, and different parts of the United States.

The Menzel village consists of 610 pieces, including four village sets, and a variety of different types of figurines.

In addition to the Menzel Christmas Village, another holiday village is displayed on loan from Pat Roiger, featuring buildings from New Ulm. This village was created by Pat's mother, Pearl Roiger, and depicts houses and buildings from New Ulm. Pearl made the models in the 1980s and 1990s and spent many hours creating these extremely detailed and beautiful recreations of some of New Ulm's prominent and unique structures. Ten buildings are displayed, including the Eagle Roller Mill, the Hermann Monument, the John Lind House, and the Wanda Gag House. Pearl displayed the village in her own home for many years before passing it to her son. Pat has set it up in his home every year since then.

This exhibit will be on display through December 2023 on the second floor of the Brown County Historical Society's museum. For more information, please contact the BCHS at 507-233-2616.

Let us help you decorate your space...



SPRINGFIELD FLORAL
Char Frank • 1 East Central • 723-6764 • Local deliveries available.

Decor by Char
Event decorating for all occasions.



PEICHEL'S
LAWN IRRIGATION

Springfield, MN

507-227-1919 or 507-920-7875

DOWNTOWN ESTATES

102 LINCOLN STREET SPRINGFIELD, MN 56087



Elderly designated
units (62+ years or
disabled)

Free guest
apartment for family

On-call caretaker
and maintenance

Community room
with full kitchen

Meals delivered by
Meals On Wheels

Weekly and monthly
resident activities

**Call 507-327-2137
to schedule a tour!**

SCAN THE QR CODE
TO VIEW OUR WEBSITE
& SEE MORE!



RENT RATES:

1 BR: STARTING AT \$0 - \$605

BASED ON INCOME IF YOU QUALIFY FOR RENTAL ASSISTANCE



SMRMANAGEMENT
A Professional Apartment Management Company

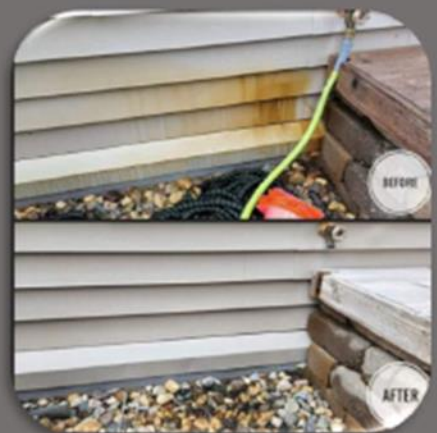
Lund Power Washing

507-205-2580

Our Services

- Vinyl siding
- Store fronts
- Stucco
- Roofs
- Gutters
- Decks
- Fencing
- Brick
- Pavers
- Sidewalks
- Driveways
- Patios

Also offering STAINING services!



Call or text for a **FREE QUOTE!**



Betsy 507-276-1270

Jessica 507-220-0261

Sam 507-822-0179

41132 180th Street West Springfield, MN

www.pinkswancreations.com

Chasing dreams & making people beautiful

We offer hair, waxing, & massage services as well as lash extensions & airbrush spray tans

To Book Online @

<https://square.site/book/OWW6JJWQ0C4GP/pink-swan-boutique-beauty-parlor-springfield-mn>

Speed into amazing.

- ▶ Fast download speeds available from 100 Mbps up to 1 GIG[†]
- ▶ Faster than advertised download speeds (*FCC Twelfth Measuring Broadband America Fixed Broadband Report*)
- ▶ Powerful whole-home WiFi
- ▶ 99.99% network reliability[^]



xstream.com
844-XTREAM3

XTREAM
POWERED BY Mediacom.

[†]Download speeds may vary and a monthly usage allowance applies. Services may not be available in all areas.

[^]2023 Mediacom Executive Summary Reliability Report. Xstream powered by Mediacom is a registered trademark of Mediacom Communications Corporation.





11 E Rock Street
Springfield, MN 56087
507-723-5721

Monday Special

TACO SALAD

\$4.00 Reg. \$4.99

Large Bowl

Beef or Chicken

Taco Express

Wednesday Special

TACOS

2 \$3 Reg. \$1.99

Hard or Soft Shell Tacos

Beef or Chicken

Thursday Special

WALKING TACOS

\$3 Reg. \$4.79

Regular Size

Beef or Chicken



Jack Larson Seeds

**Your local independent
Dekalb - Asgrow Dealer**

*We have the staff and equipment
to service all of your seed needs year round!*

Agronomic Support and Field Scouting
Seed Delivery to your farm or field
CRP & Cover Crop Seed and Drilling
Field View™ Installation and Support

**Custom
Soybean
Drilling
and Air Seeding**

Custom Hydro-Seeding
Monitor Calibrations
Planter Prescriptions
Drone Services



Larson Crop Insurance

**Contact us with any
Crop Insurance Questions**

Laurie Hoffbeck's cell ~ 507-829-8367

Jack's cell ~ 507-829-5189

Johnny's cell ~ 612-207-6542

Steve's cell ~ 507-828-3164

Evan's cell ~ 507-822-3545

Colin's cell ~ 507-430-0558

**Grow
WITH Us**



507-723-4302

Available 24-7

www.jacklarsonseeds.com

CLEMENTS LUMBER

INC.

SPRINGFIELD – MORGAN – COMFREY – REDWOOD FALLS

(507)723-2230 (507)249-3122 (507)877-2026 (507)644-2100

"For all your building needs: residential, commercial, agricultural and remodeling."

Clements Lumber is a Valspar Dealer.
For all your paint needs!



BROWN



Est.

2021

TREE SERVICE

- ♦ Tree Removal
- ♦ Tree Trimming
- ♦ Stump Removal
- ♦ Storm Clean Up
- ♦ Free Estimates
- ♦ 24 Hour Emergency Service
- ♦ 15 Years Experience
- ♦ Fully Licensed & Insured

Brown Tree Service, LLC

Douglas Brown 507-220-0672

Brigette Brown 507-220-0243

browntreeservicemn@yahoo.com

Springfield, MN



- **Drafting & Design Service**
- **Consultation Service**

New Homes
Pole Buildings
Building Additions
Remodel/Renovations
Kitchen Layouts
Decks
Garages

CR Consulting & Design
Construction Consultation & Design.

New Home Plans



Slab on Grade



2-Story



Elevations Foundation Plan
Floor Plans Wall Sections
Site Plan Detail Pages

Pole Buildings



Machinery Storage Options



Shop House and Shop Office Options



Post Layouts, Wall Sections & Detail Drawings

Kitchen Designs



3D Renderings



Floorplan Layouts

Fee Schedule

- Upfront pricing information based on type/size of project.
- Start/Stop at any point in the Process.
- Full-size print copies provided
- PDF Digital files provided for distribution.

Remodeling



Site Visit to map out existing floorplan

Concept drawings with options



Decks



Our Office is located on Central Street in Springfield. Parking and customer entrance is around the rear of the home, accessed through the alley. We are open by Appointment Only.



CR Consulting & Design
520 West Central Street
Springfield, MN 56087
Phone: 507.276.9611
E-mail: crothmeier@gmail.com



Springfield Chamber of Commerce

33 South Cass Avenue *PO Box 134

Springfield, MN 56087

507-723-3508

spfdchamber@newulmel.net

www.springfieldmnchamber.org

Denise Gicker

Executive Director

Monday- Friday 9 am – 1 pm



Chamber Chatter is a publication of the
Springfield Chamber of Commerce.
It is published monthly to keep members
and friends informed on events, activities,
and programs in and around the community.

Mission Statement – The mission of the Springfield Area Chamber of Commerce/CVB is to strengthen the business community and take a leadership role in promoting economic growth in a spirit of cooperation and team work.

Vision Statement – Promote economic growth through the recruitment and retention of quality businesses and industries that will contribute to the overall economic health of the community. Provide the membership networking opportunities, referrals, internet promotion and other membership services to promote and enhance their business. Develop and nurture relationships with local government and other community sectors to help facilitate the needs and interests of the business community and enhance the overall quality of life within the community.

Chamber of Commerce General Board of Directors 2023

President- Mike Granda- Farmers & Merchants State Bank

Vice President- Wendy Krier- Springfield Advance-Press

Dan Anderson- Springfield Market

Chrissy Boerboom- Friend of the Chamber

Amanda Frank – Reiner Real Estate

Heidi Wersal - City of Springfield Representative

Deb Miesen- Miesen's Color Center

Kayla Berberich- SouthPoint Financial Credit Union

Deb Wahl- Massage & Bodywork by Deb Wahl