

CHAMBER CHATTER



September 2023

September 14th-16th – Springfield City Wide Garage Sales

November – Holiday Open House

*Please share the Chamber Chatter Newsletter with your employees. The newsletter is also now available on the Chamber website at <https://springfieldmnchamber.org/chamber-chatter/>. It will also be posted on Facebook when the current newsletter is available on the Chamber Website.

If there are additional email addresses you would like me to add to make sure our newsletter is getting to all who are interested, please let me know by emailing me at spfdchamber@newulmtel.net and I would be happy to add them to the email list.



Materials Needed:

With More residents moving to Springfield, Welcome Packets are going quickly. Let's all let the new residents know about what our local businesses have to offer. Take advantage of this FREE advertisement.

Please drop off materials at the Springfield Chamber Office
located at the east end of Springfield Area
Community Center or via Mail

*Springfield Chamber of Commerce
PO Box 134
33 S. Cass Avenue
Springfield, MN 56087*



REMINDER

RETAIL COMMITTEE MEETING

THE FIRST FRIDAY
OF THE MONTH
AT NOON

SPRINGFIELD COMMUNITY
CENTER

**ALL CHAMBER
MEMBERS WELCOME!**

St. Raphael Catholic Church
Springfield, MN



Sunday, September 10th, 2023

10:00am-4:00pm

~On the Menu~

Hot Turkey Sandwiches,
Hamburgers, Hot Dogs,
Cold Potato Salad, Seasoned
Beef with Nacho Chips &
Cheese, Rootbeer Floats,
Popcorn, Giant Chocolate
Chip Cookies, Cotton Candy
and Shaved Ice.

~Main Attractions~

Live Music Beer Garden
Silent Auction Live Action
Sweet Shoppe Craft Ladies
Homemade Store Raffle Drawing
Bounce Houses

sponsored by Joel Pingeon Trucking



Thomas' Train Rides

sponsored by the American Legion #257



Giant Rock Climbing Wall

Bean Bag Tournament

3 on 3 Basketball Tournament

Face Painting and many

Children's Games

JOIN
THE FUN!

An illustration of three garden gnomes in a garden. The gnomes are stacked vertically, with the purple one on top, the green one in the middle, and the yellow one at the bottom. They are all wearing white beards and have their hands on their hips. A large yellow sunflower is in the center, with a butterfly and a bee nearby. The background shows a white picket fence and various garden flowers.

Good Neighbors Thrift

723-5778

Follow us on Good
Neighbor Thrift MN

Mon. 9-12, Tues.-Fri. 9-5
Sat. 9-12

Allina Health Springfield Clinic

Visit one of our Advanced Practice Providers
for your health care needs

National APP Week is celebrated annually the 4th week of September.

Family Practice Providers



Ashley Schmitt, CNP
Family Medicine



Valerie Folkens, CNP
Family Medicine



Christina Vogel, CNP, DNP
Family Medicine



Kristina Carlson, CNP
Family Medicine
& Senior Health



Joshua Hoffmann, CNP
Family Medicine



Amanda Goblish, DNP
Family Medicine
& Express Care

Specialty Care Providers



Rebecca Bailey, PA
Urology



Cy Schweiss, DNP
Orthopedics

Allina Health 

Wedding Registry

Ashley Rogotzke & Ben Henning
Wedding

November 11, 2023

SAVE UP TO
\$10 PER GALLON*
ON SELECT PRODUCTS



SEPTEMBER 1
- 10, 2023

*Limit 10 gallons
All products may not be
available in all locations

INSTRUCTIONS TO REDEEM:

- Scan QR code or visit website directly
- Enter in your information (i.e. name, address, contact information, etc.)
- Select 'Brand Purchased'
- Enter in UPC (numbers below bar code on purchased product)
- Select Retailer from which product was purchased
- If Retailer not listed, please select 'Other'
- Upload image of Receipt or Invoice
- Click Submit



Visit "Contact Us" tab on
consumerrebates.ppg.com
to reach out with any questions



Save up to \$10 per gallon
September 1 - 10, 2023
see store for details

Miesen's Color Center

Downtown Springfield

(507) 723-4424

www.miesenscolorcenter.com



THANK YOU, MEMBERS!

Please join us for dinner, entertainment and kids activities at one of our Member Appreciation Events!
We are accepting non-perishable food items to donate to local food shelves at each event.

5-7 p.m., Wednesday, September 20th, 2023

Sleepy Eye

Location — Allison Park
Music by Dain Moldan

N. Mankato

Location — Spring Lake Park
Music by Tanner Peterson

Springfield

Location — Riverside Park
Music by Cliff Streich Band

Hutchinson

Location — Northwoods Park
Music by Josie Sanken

New Ulm

Location — Hermann Heights Park
Music by World's Worst Band

Waconia

Location — Waconia Branch
Music by Traveled Ground

St. Peter

Location — Gault Park
Music by Chris Bertrand

www.southpointfinancial.com | 877-794-6712 | Federally Insured by NCUA

13th annual

HERO FOR LIFE BANQUET



YOU ARE INVITED TO JOIN US

September 21, 2023 5:30-8:30

Sleepy Eye Event Center 110 12th Ave. NE, Sleepy Eye



Keynote Speaker

We are looking forward to welcoming, Vaunae Hansel, the Executive Director of Elevate Life, as our keynote speaker. Her passion is to equip Pregnancy Resource Centers like ours who serve women who find themselves in unexpected pregnancy. Vaunae has experienced the devastation of her personal abortion story and found healing, forgiveness and peace through Christ and an Abortion Healing Ministry. We hope you will join us to hear her story and learn more about the mission and work of First Choice Pregnancy Services.

RSVP VIA;
CALL (507)-359-9800
SCAN QR CODE



OR GO TO WWW.CONSIDERYOUROPTIONS.ORG (DONATE/EVENTS TAB)



While your college student is away at school,
keep them in touch with home.

Send your college student
a subscription.

September-May Subscription
online - \$25 | print copy - \$43

Springfield
Advance-Press

507-723-4225

Looking to

FALL

IN LOVE WITH A
NEW HOME?

LET US
HELP!

REINER
REAL ESTATE

Student Backpack

We're here for you, wherever life takes you.



F&M Student Backpack Ambassadors: Lucas Milbrath, Russell Beers, Kaylee Granda, and Ben Potter

YOUR future.YOUR bank.

F&M
BANK


Springfield | Morgan | fmb-ebank.com

F&M's Student Backpack offered exclusively to our customers who are full time students, up to 24 years of age.

*Data rates may apply. **Parent/guardian cosign may be required. There is a small fee to replace a card.

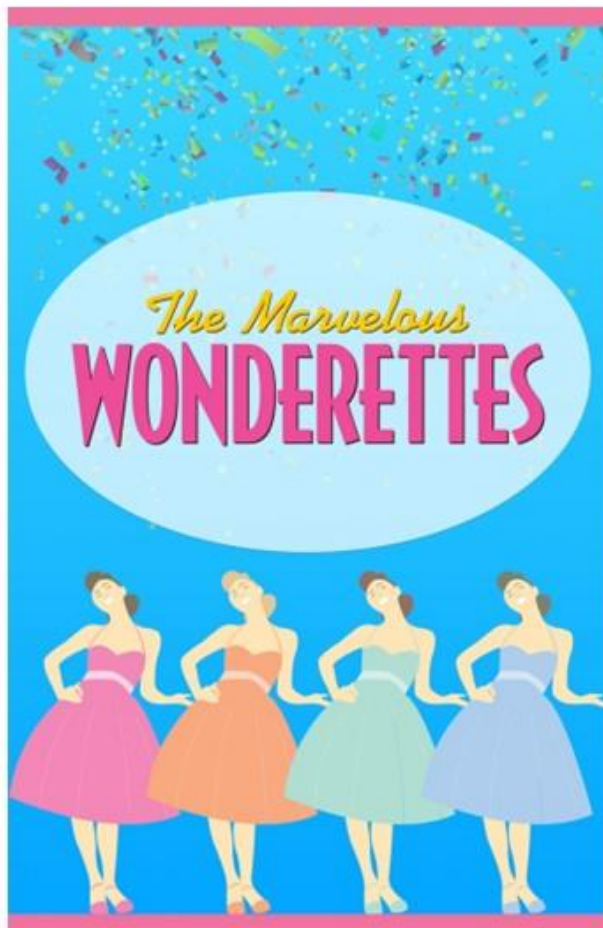
Student Backpack Benefits:

- ✓ FREE Mobile Banking & Mobile Deposit*
- ✓ FREE Debit Card**
- ✓ FREE Online Banking & Bill Pay
- ✓ FREE Online Statements
- ✓ FREE Checks
- ✓ No Minimum Balance Requirements
- ✓ No Service Charges
- ✓ Card Control*
- ✓ Scholarship Opportunities
- ✓ **\$10 Fun Money**

 Equal Housing Lender

FMB823

Member FDIC



The smash off-Broadway hit takes you to the 1958 Springfield High School prom where we meet Betty Jean, Cindy Lou, Missy and Suzy, four girls with hopes and dreams as big as their crinoline skirts. As we learn about their lives and loves, the girls serenade us with classic '50s and '60s hits. The Marvelous Wonderettes will keep you smiling in this must-take musical trip down memory lane!

**THURSDAY
NOVEMBER 9th**

- FULL PAYMENT IS DUE AT REGISTRATION -

F&M Customer	\$105.00	Non-Customer	\$115.00
--------------	----------	--------------	----------

INCLUDES: Admission, meal, gratuity, snack and coach bus.

- Last date to sign up is October 17, 2023.
- Fees non-refundable unless you replace yourself.
- Travelers under the age of 18 must be accompanied by an adult.
- Everyone is welcome! Need not be a customer of F&M Bank.

DEPARTURE: Springfield – St. John Lutheran Church at 9:00 am
Morgan – Vernon Park at 9:15 am



Space is limited, register today!

Springfield 507.723.4800 | Morgan 507.249.3166 | fmb-ebank.com

Equal Housing Lender

Member FDIC



Loyalty | Trusted Advisor | Experience | Local Ownership | Community Commitment



**WE ARE SWITCHING TO WEDNESDAYS
BEGINNING SEPTEMBER 13th**

**The Kitchen Table Ministry invites you to come
and enjoy a meal with family and friends and
maybe even make new friends!**

This is open to ALL who are interested.

WHEN: Wednesdays—5:15 –6:45 p.m.

WHERE: St. Johns Lutheran Church

224 Mary Avenue

Springfield, MN

COST: FREE





320.564.4807

www.mvtvwireless.com

WISHING ALL TEACHERS AND
STUDENTS A GREAT
2023 -2024 SCHOOL YEAR!



PEICHEL'S
LAWN IRRIGATION

Springfield, MN

507-227-1919 or 507-920-7875



KDOMradio
1580 AM 103.1 FM

Introducing the NEW KDOM Apps!

Now you can listen anytime, anywhere! Download our
FREE Apps from your App store and take
KDOM 1580AM/103.1FM and
Hot Country 94.3FM everywhere you go!



I need a local space to...



NETWORK

CELEBRATE

SUPPORT



Springfield Area
COMMUNITY CENTER

CELEBRATE LOCAL



Weddings
Community Events
Business Meetings
Celebrations

RESERVE TODAY!

507-723-3517

**[www.springfieldmn.org/
community-center](http://www.springfieldmn.org/community-center)**



Complete IT Network Health Check

Graduate from Basic Scans to
a Comprehensive IT Analysis

Break the cycle of chaos and gain clear insights into your complete IT network's strengths and vulnerabilities.

Network analysis can deliver a comprehensive health report that assigns a risk score to every aspect of your organization's IT network.

Contact a **Nuvera Territory Manager** to learn more at **844.610.5300**.



GAIN COMPLETE VISIBILITY

From the network and cloud to IT security, gain a 360-degree picture of your environment.



PRIORITIZE PROJECTS

Use vulnerability risk scoring to guide project prioritization and budgeting decisions.



REMEDiate RECURRING ISSUES

Address vulnerabilities across servers, Microsoft 365, IT security, and networks once and for all.



TRACK NETWORK HEALTH

Get a comprehensive IT network analysis as often as you'd like—annually, quarterly, monthly, or weekly.

scan for details



GET LEAN

by Halloween

6 WEEKS: SEPT 17 - OCT 28

About the

FF SPRINGFIELD CHALLENGE

We wanted to create a program for busy folks just like you to lose weight, have more energy & take back control without having to count calories or deprive yourself ...and you WILL learn how to KEEP the weight off!

We took the same strategies we've used to help our most successful clients gain more energy, build skills in the kitchen, & create a new, healthy lifestyle and created this six-week program to focus on mastering the most effective actions when it comes to weight loss (and beyond).

These actions alone will help you to be more productive, gain control & change the trajectory of your life.



Coached Workouts

You're never on your own - we're here to make sure you perform everything correctly & are adequately challenged!



Daily Education

Delivered right to your smartphone - short lessons that give you the WHY behind the WHAT!



Friendly Competition

What's better than getting results? Beating neighboring communities. Face off against Sleepy Eye & Redwood Falls for the best results!

CONTACT US

507-448-5646

ffspringfieldmn@gmail.com

Show your Support
for the
Springfield Tigers
Fall Sports Teams



Order online or contact me directly
www.deluxeprint.biz



As you start checking off your to do list before you turn 65, know that you have a free local resource in me to make sure that you are properly informed when enrolling into Medicare.



Kelly Pierson
507-723-5454
kelly.pierson@thrivent.com
Thrivent.com/Redwood

"We do not offer every plan available in your area. Any information we provide is limited to those plans we do offer in your area. Please contact Medicare.gov or 1-800-MEDICARE to get information on all of your options."

Developed by LeClair Group, © 2019
DEP01_DOC014_V01_032019

Thrivent Financial
12 W. Central St.
Springfield, MN 56087





**FALL HOURS
7AM - 3:30PM**

NUTRITION TO FUEL THE BODY & LIVE YOUR BEST LIFE!

Follow us on social media:



@Theloftnutrition



@theloftnutrition56087



507-766-0040



24 N Cass Ave, Springfield, MN 56087



ST. JOHN'S
CIRCLE OF CARE
A TRADITION... FOR ALL AGES

St. John's Circle of Care
invites you to our annual

Memory Care WALK

"In a world of uncertainty, enjoy **EVERY** Moment"

When: Saturday September 16th 2023

Where: St. John's Circle of Care
(Front Entrance)

Time: Registration at 8:30 a.m.
Walk starts at 9:00 a.m.

Enjoy
EVERY
Moment

For: Walk/Run 1 mile or 2 miles
to raise **Alzheimer's Awareness**, enjoy every
moment and efforts to find a cure!

*Proceeds goes towards our own Memory Care Unit and a portion to
the Alzheimer's Association in efforts to find a cure*

Fee: Registration fee \$15.00. **Fee is waived with
purchase of shirt or tumbler order**, please see
additional form for information.



**This year we are featuring a special partnership with
Springfield · Cedar Mountain Cross Country Team!
Go Team Go!**

Additional questions, please contact us at St. John's Circle of Care at (507) 723-3200 or via e-mail Chandra, Memory
Care Coordinator at chandraj@sjlhome.com



ST. JOHN'S
CIRCLE OF CARE
A TRADITION FOR ALL AGES



Memory Walk
Saturday Sept. 16th, 2023

**Purchase your
Forget-Me-Not
flowers today and:**

Enjoy
→ EVERY →
Moment



**Purchase “FORGET ME NOT” Flowers
for just \$1.00 each!**

Great fundraiser to spread awareness and join the cause. Purchase a flower in memory of a loved one that has passed away from the disease, in honor of a loved one with the disease currently or to help in finding the cure for our future loved ones that may be affected. All profits go to our own Memory Care Unit at St. John's Circle of Care and to the Alzheimer's Association to find a cure!

Purchase from: Mandi at the Front Desk, Chandra Jensen, Memory Care Coordinator or Amber Meidl, Therapeutic Recreation Director
Call (507) 723-3200 today for more information!

St. John's Memory Walk

Long Sleeved Shirts and/or Tumblers

With purchase of shirt or tumbler you have **FREE** registration for the

Memory Walk on Saturday September 16th at 9:00 a.m.

*Registration at 8:30 a.m. Profits go to Riverhaven Memory Care Unit & The Alzheimer's Association

Walk to END Alzheimer's! Turn orders in to Mandi @ Front Desk, Questions: chandraj@sjlhome.com

Long Sleeved Shirt

ITEM #1

Adult sizes: \$35.00

SM, MED, LG, XL, 2X, 3X, 4X, 5X

Youth Sizes: \$25.00

S(6-8), M(10-12), L(14-16), XL(18-20)



ITEM #2

Tumbler

Style of cup shown with wrap that will be on the outside.

\$20.00

QTY	Chose Item	Description/Color	SIZE	PRICE
	#1 Long Sleeve	Long Sleeve Grey or Purple	(Indicate youth/adult)	
	#2 Tumbler	Tumbler Grey or Purple		

* Please turn order form into front desk by September 1st to guarantee your order will be ready for walk!

* After Sept 1st orders will need to be picked up after the walk at a later date

Name:

E-mail:

Phone:

Total: _____

- ☐ Check included - Checks to SJLH
- ☐ Cash included
- ☐ Payroll deduct- employees only



ST. JOHN'S
CIRCLE OF CARE
A TRADITION... FOR ALL AGES



Donate for Donuts Drive-Thru Fundraiser



September 1st
September 8th
September 15th



ENJOY
EVERY
Moment

Drive-Thru St. Johns
awning to donate and
pick up a donut! \$2.00

September 1st, 8th & 15th
from 7 a.m. to 9 a.m.

Proceeds goes towards our own Memory Care Unit and a portion to the Alzheimer's Association in efforts to find a cure

Memory Care Walk is September 16th

THE MAPLES 2ND ANNUAL CAR SHOW

**COME ON OUT AND SHOW OFF YOUR CLASSIC CAR,
HOT ROD, BIKES, OR ANY VEHICLE YOU THINK IS
SHOW WORTHY!**

SATURDAY SEPTEMBER 16TH

2:00pm-4:00pm

St Johns Circle of Care Campus

Vehicles can meet at The Maples parking lot and then we will
proceed to line up and drive around the entire campus to show off
your car to the residents!

Refreshments will be provided!

RSVP: Contact Kathy Marks if you would like to come show off your
vehicle or just show up between 2-4pm!

Kathy Marks- 507-723-3250

Kathym@sjlhome.com

St. John's Circle of Care
Circle of Change Committee is hosting a

Garage Sale

In the SJLH Chapel

September
7 & 8
Thurs./Fri.

8:00 AM – 5:00 PM

*All proceeds from the garage sale will benefit
the staff at St. John's Circle of Care.*

The mission of the Circle of Change Committee is
"To help, support, and encourage our staff
through a variety of events and functions to increase
employee morale and working relationships."



Betsy 507-276-1270

Jessica 507-220-0261

Sam 507-822-0179

41132 180th Street West Springfield, MN

www.pinkswancreations.com

Chasing dreams & making people beautiful

We offer hair, waxing, & massage services as well as lash extensions & airbrush spray tans

To Book Online @

<https://square.site/book/OWW6JJWQ0C4GP/pink-swan-boutique-beauty-parlor-springfield-mn>



Red Rock Bank Sanborn and Springfield know that financial responsibility starts early. With our checking accounts, debit cards, online and mobile banking, we have the tools that any young adult needs. Stop in or call Red Rock Bank Sanborn and Springfield today!



RedRock

Bank

SPRINGFIELD • SANBORN

507-723-7300 • 507-648-3871



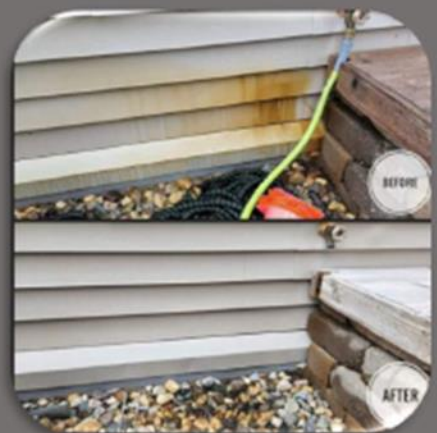
Lund Power Washing

507-205-2580

Our Services

- Vinyl siding
- Store fronts
- Stucco
- Roofs
- Gutters
- Decks
- Fencing
- Brick
- Pavers
- Sidewalks
- Driveways
- Patios

Also offering STAINING services!



Call or text for a **FREE QUOTE!**

Speed into amazing.

- ▶ Fast download speeds available from 100 Mbps up to 1 GIG[†]
- ▶ Faster than advertised download speeds (*FCC Twelfth Measuring Broadband America Fixed Broadband Report*)
- ▶ Powerful whole-home WiFi
- ▶ 99.99% network reliability[^]



xstream.com
844-XTREAM3

XTREAM
POWERED BY **Mediacom.**

[†]Download speeds may vary and a monthly usage allowance applies. Services may not be available in all areas.

[^]2023 Mediacom Executive Summary Reliability Report. Xstream powered by Mediacom is a registered trademark of Mediacom Communications Corporation.





11 E Rock Street
Springfield, MN 56087
507-723-5721

Monday Special

TACO SALAD

\$4.00 Reg. \$4.99

Large Bowl

Beef or Chicken

Taco Express

Wednesday Special

TACOS

2 \$3 Reg. \$1.99

Hard or Soft Shell Tacos

Beef or Chicken

Thursday Special

Taco Express

WALKING TACOS

\$3 Reg. \$4.79

Regular Size

Beef or Chicken



DODGE // Jeep // Kawasaki

www.JensenMotors.com

www.JensenChryslerDodgeJeepRAM.com

Jack Larson Seeds

**Your local independent
Dekalb - Asgrow Dealer**

*We have the staff and equipment
to service all of your seed needs year round!*

Agronomic Support and Field Scouting
Seed Delivery to your farm or field
CRP & Cover Crop Seed and Drilling
Field View™ Installation and Support

**Custom
Soybean
Drilling
and Air Seeding**

Custom Hydro-Seeding
Monitor Calibrations
Planter Prescriptions
Drone Services



**Grow
WITH Us**



Larson Crop Insurance

**Contact us with any
Crop Insurance Questions**

Laurie Hoffbeck's cell ~ 507-829-8367

Jack's cell ~ 507-829-5189

Johnny's cell ~ 612-207-6542

Steve's cell ~ 507-828-3164

Evan's cell ~ 507-822-3545

Colin's cell ~ 507-430-0558

507-723-4302

Available 24-7

www.jacklarsonseeds.com

Now leasing in Springfield, MN!

Downtown Estates

102 Lincoln Street, Springfield MN

Rental assistance may be available for those who qualify! Rent for as low as 30% of income!

Utilities included: Heat, water, sewer, & garbage

20 Elderly units (62yrs+, handicap or disabled)

FREE Guest Apartment for family!

Community Room with full kitchen & meals served 5 days a week

Elevator

Patio

On-site laundry

Personal parking in lot

On-call caretaker/maintenance

One block from downtown



1-bedroom units



Now leasing in Springfield, MN!

River Bluffs

200 Riverside Drive, Springfield MN

Rental assistance may be available for those who qualify! Rent for as low as 30% of income!

Utilities included: Heat, water, sewer, & garbage

20 Elderly units (62yrs+, handicap or disabled)

Beautiful landscaping

On-site laundry

Personal parking in lot

Close to downtown area

Across the street from park/pool/ball fields

Private setting

Patio

1, 2, and 3 bedroom units



ED's Repair
SPRINGFIELD, MN
723-5985

CLEMENTS LUMBER

INC.

SPRINGFIELD – MORGAN – COMFREY – REDWOOD FALLS

(507)723-2230 (507)249-3122 (507)877-2026 (507)644-2100

"For all your building needs: residential, commercial, agricultural and remodeling."

Clements Lumber is a Valspar Dealer.
For all your paint needs!



BROWN



Est.

2021

TREE SERVICE

- ♦ Tree Removal
- ♦ Tree Trimming
- ♦ Stump Removal
- ♦ Storm Clean Up
- ♦ Free Estimates
- ♦ 24 Hour Emergency Service
- ♦ 15 Years Experience
- ♦ Fully Licensed & Insured

Brown Tree Service, LLC

Douglas Brown 507-220-0672

Brigette Brown 507-220-0243

browntreeservicemn@yahoo.com

Springfield, MN



- **Drafting & Design Service**
- **Consultation Service**

New Homes
Pole Buildings
Building Additions
Remodel/Renovations
Kitchen Layouts
Decks
Garages

CR Consulting & Design
Construction Consultation & Design.

New Home Plans



Slab on Grade



2-Story



Elevations Foundation Plan
Floor Plans Wall Sections
Site Plan Detail Pages

Pole Buildings



Machinery Storage Options



Shop House and Shop Office Options



Post Layouts, Wall Sections & Detail Drawings

Kitchen Designs



3D Renderings



Floorplan Layouts

Fee Schedule

- Upfront pricing information based on type/size of project.
- Start/Stop at any point in the Process.
- Full-size print copies provided
- PDF Digital files provided for distribution.

Remodeling



Site Visit to map out existing floorplan

Concept drawings with options



Decks



Our Office is located on Central Street in Springfield. Parking and customer entrance is around the rear of the home, accessed through the alley. We are open by Appointment Only.



CR Consulting & Design
520 West Central Street
Springfield, MN 56087
Phone: 507.276.9611
E-mail: crothmeier@gmail.com



Springfield Chamber of Commerce

33 South Cass Avenue *PO Box 134

Springfield, MN 56087

507-723-3508

spfdchamber@newulmel.net

www.springfieldmnchamber.org

Denise Gicker

Executive Director

Monday- Friday 9 am – 1 pm



Chamber Chatter is a publication of the
Springfield Chamber of Commerce.
It is published monthly to keep members
and friends informed on events, activities,
and programs in and around the community.

Mission Statement – The mission of the Springfield Area Chamber of Commerce/CVB is to strengthen the business community and take a leadership role in promoting economic growth in a spirit of cooperation and team work.

Vision Statement – Promote economic growth through the recruitment and retention of quality businesses and industries that will contribute to the overall economic health of the community. Provide the membership networking opportunities, referrals, internet promotion and other membership services to promote and enhance their business. Develop and nurture relationships with local government and other community sectors to help facilitate the needs and interests of the business community and enhance the overall quality of life within the community.

Chamber of Commerce General Board of Directors 2023

President- Mike Granda- Farmers & Merchants State Bank

Vice President- Wendy Krier- Springfield Advance-Press

Dan Anderson- Springfield Market

Chrissy Boerboom- Friend of the Chamber

Amanda Frank – Reiner Real Estate

Heidi Wersal - City of Springfield Representative

Deb Miesen- Miesen's Color Center

Kayla Berberich- SouthPoint Financial Credit Union

Deb Wahl- Massage & Bodywork by Deb Wahl