



# DRS. AKRE & CLARK

FAMILY EYE CARE



## We're Honored

That when it comes to your eye care needs you think of us. Thank you for making 2022 great, we are looking forward to 2023.



1715 S. Broadway  
New Ulm, MN 56073  
**507-354-8531**

623 W. Rock St  
Springfield, MN 56087  
**507-723-2020**

1111 2nd St. NE  
Waseca, MN 56093  
**507-835-2020**



**417 West Rock Street  
Springfield, MN 56087  
507-496-1556**

**WE'VE MOVED!**



**HAS A NEW  
ADDRESS!**



104 N MARSHALL AVE  
SPRINGFIELD MN 56087  
PHONE: (507) 227-8767

## Join us for a Worksite Wellness Networking and Training Event

### Culturally responsive and responsible: Leading with cultural agility



One need not travel outside of MN to encounter cultures from all around the world. How do we ensure respect and understanding of multiple cultures as we engage in community? With humility and agility, we can grow our capacity to be responsive leaders in multicultural settings. In our time together, we will use reflecting on our home cultures to cultivate tools for cultural agility in our community work.

#### Learning Objectives:

- Describe the importance of cultural agility
- Identify aspects of my own culture and understand how it impacts my worldview
- Recognize the core dimensions of cultural difference
- Identify ways to navigate cultures with agility, humility and leadership

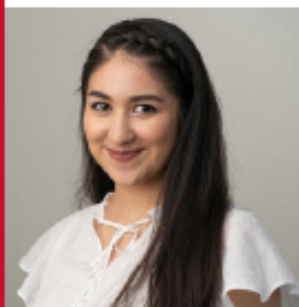
**Thursday, Jan. 12, 2023**

**Time:** 11:30 a.m. to 1 p.m.

**Via Zoom** (link will be sent after registration)

**RSVP:** Register by Jan. 9 at <https://tinyurl.com/Jan12worksite>  
Or RSVP by Jan. 9 to [Jennifer.Maurer@allina.com](mailto:Jennifer.Maurer@allina.com)

#### **Presenter:** Jocelyn Hernandez-Swanson



Jocelyn Hernandez-Swanson is a leadership and civic engagement (LCE) educator with the University of Minnesota Extension Center for Community Vitality. As an LCE educator, she works with community members and partners as a resource in cultivating efficient and effective leadership and civic engagement practices. Specializing in working with the Latinx community and using racial equity frameworks, Jocelyn is excited to expand Extension's reach.

Jocelyn brings experience working at North Hennepin Community College's Diversity and Equity Office, the City of Brooklyn Park, and the City of Minneapolis in community engagement roles centering on people of color and racial equity.

**Allina Health**  
**NEW ULM**  
**MEDICAL CENTER**  
Occupational Health and Wellness Services



**Heart of New Ulm**  
Supporting a culture of wellness

**ship**  
statewide health  
improvement partnership  
BROWN, NICOLLET, LE SUEUR  
& WASECA COUNTIES

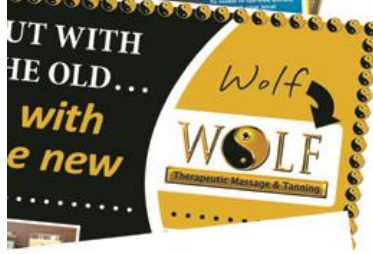




We are excited to announce  
Windom Area Hospital is  
moving to Windom Area Health.



Don't Miss Out on These and Other  
**GREAT DEALS!**



**LOWEST 2023 RATES YOU'LL EVER SEE!**

It's time for our annual

**FULL PAGE**

**Ad-Mania**

**Call Thurs., January 5**

10 a.m. to 4 p.m.

**OVER**

**60% OFF**

Full Page Ads

**FOR**



**6 HOURS ONLY**

**2023  
Full Page  
OVER 60% OFF**

**the Shopper**  
\$550  
Premium Position  
\$970

**CITIZEN**  
\$530

**OBSERVER/ADVOCATE**  
\$450

**Peach**  
\$435  
Premium Position  
\$650

**COLOR COST:**  
Add full color for an  
additional \$245 per ad,  
based on availability.

**IT WORKS LIKE THIS . . .**

Between 10 a.m. and 4 p.m. Thursday,  
January 5 Citizen Publishing account  
representatives will accept calls to receive full  
page ad reservations for one or more issues in  
January and February. The sale will last only 6  
hours and ends at 4:01 p.m.

**RESERVE YOUR ADS . . .**

Please carefully consider the date(s) you wish  
to run your ad(s) and be prepared to reserve  
them when you call. The possible 2022 issue  
dates are during the weeks of—

- January 14
- January 22
- January 28
- February 4
- February 11
- February 18
- February 25

**Call Trevor, Sue, Rahn or Jen at—**

**507-831-3455 or 800-658-2510**

PO Box 309 • 260 10th Street • Windom, MN 56101

Celebrating our Store  
Anniversary in January!


January 13th

**Good Neighbor Thrift**  
**Accepting Donations**  
**Call us at 723-5778**  
**Follow us on FB**  
**Good Neighbor Thrift**  
**MN**

**Safe.**  
**Stable.**  
**Secure.**  
**Trustworthy.**

**F&M**  
**BANK**

Building Relationships.  
Making a Difference.

 Equal Housing Lender

Springfield | Morgan | [fmb-ebank.com](http://fmb-ebank.com)

Member FDIC





Betsy 507-276-1270

Jessica 507-220-0261

Sam 507-822-0179

41132 180th Street West Springfield, MN

[www.pinkswancreations.com](http://www.pinkswancreations.com)

\*Chasing dreams & making people beautiful\*

We offer hair, waxing, & massage services as well as lash extensions & airbrush spray tans

To Book Online @

<https://square.site/book/OWW6JJWQ0C4GP/pink-swan-boutique-beauty-parlor-springfield-mn>

# CLEMENTS LUMBER INC.

**SPRINGFIELD – MORGAN – COMFREY – REDWOOD FALLS**

(507)723-2230 (507)249-3122 (507)877-2026 (507)644-2100

"For all your building needs: residential, commercial, agricultural and remodeling."

Clements Lumber is a Valspar Dealer.  
For all your paint needs!







## Nuvera Business Referral Program

A win-win opportunity—refer a business to Nuvera and receive a cash reward!

- ✓ Totally free to participate
- ✓ Unlimited referrals

### How does it work?

- 1 Refer a new business customer to Nuvera using the referral form: [nuverabusiness.com/referral](https://nuverabusiness.com/referral)
- 2 Once the referral signs a business agreement and services are installed, you receive your cash reward<sup>1</sup>.

### TYPES OF PAYOUTS

1 month of the monthly recurring revenue you generated<sup>2</sup>

*Example: You refer \$4,000 worth of monthly recurring revenue. You get a lump sum of \$4,000 on the first billing period.*

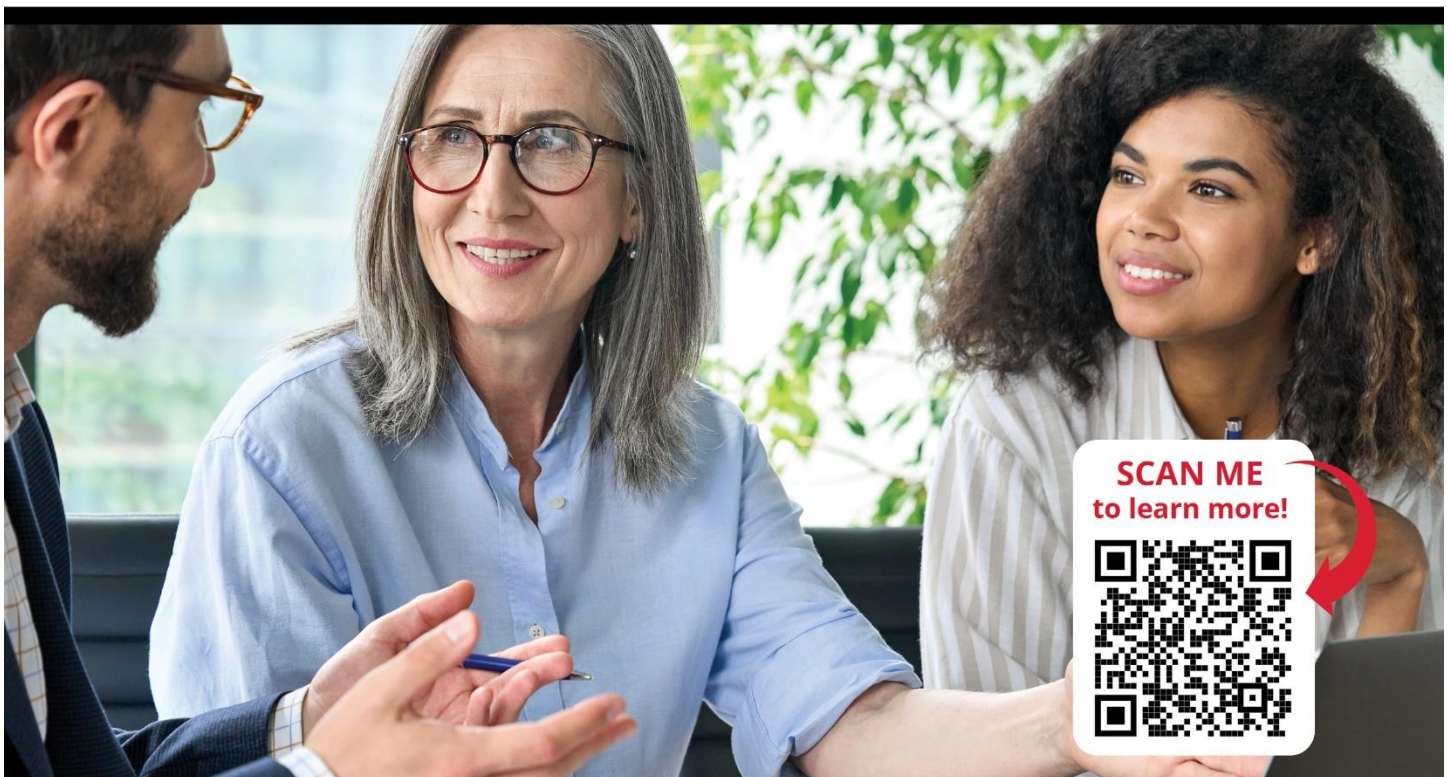
OR

25% commission on one-time purchased goods or non-recurring revenue such as equipment

*Example: You refer \$16,000 worth of phone equipment. You get \$4,000 on the first billing period.*

Participate at [nuverabusiness.com/referral](https://nuverabusiness.com/referral) or give us a call at 844.610.5300.

<sup>1</sup>After your referral signs a business agreement, services are installed, and the first bill is sent, your payment will be made. <sup>2</sup>Excluding taxes, fees, and installation, max earnings on one referral is \$5,000.





# *The Golden Ages*

## 2022 YEARBOOK MAGAZINE

Volume 2 is full color glossy magazine style book  
about Springfield's events, places, and people of the past.

**NOW AVAILABLE**

*These are stories that go beyond the history books!*

Each story comes from the popular monthly series *The Golden Ages*,  
written by Jeff Krueger, published in the *Springfield Advance-Press*.

These stories are expanded versions of the printed articles  
and include additional photos. Plus, two bonus stories.

*Springfield* **Advance-Press**

[www.springfieldap.com](http://www.springfieldap.com)

13 S. Marshall Ave | 507-723-4225 | [creative@springfieldap.com](mailto:creative@springfieldap.com)



# Show your Support for the Springfield Tigers Basketball teams

[www.deluxeprint.biz](http://www.deluxeprint.biz)



Order online or contact me directly



[www.deluxeprint.biz](http://www.deluxeprint.biz)



# *Book Online*

@MASSAGEBOOK.COM

OR

FACEBOOK

GIFT CARDS AVAILABLE ONLINE



*A Nu You Massage Therapy*

507-723-9121

[www.anuyoumassagetherapy.com](http://www.anuyoumassagetherapy.com)



# Red Rock Bank

## Hours

Monday-Friday  
9:00 a.m.-4:00 p.m.



**Our Team Members**



**Online & Mobile Banking**

ONLINE BANKING LOGIN



**Customer Service & Loans**

**Serving our communities – Past Present Future**

2 S Marshall Ave  
Springfield, MN 56087  
507-723-7300  
[www.RedRockBank.com](http://www.RedRockBank.com)  
Facebook-RedRock Bank

# BROWN



Est. 2021

## TREE SERVICE

- ♦ Tree Removal
- ♦ Tree Trimming
- ♦ Stump Removal
- ♦ Storm Clean Up
- ♦ Free Estimates
- ♦ 24 Hour Emergency Service
- ♦ 15 Years Experience
- ♦ Fully Licensed & Insured

## Brown Tree Service, LLC

Douglas Brown 507-220-0672



Brigette Brown 507-220-0243

[browntreeservicemn@yahoo.com](mailto:browntreeservicemn@yahoo.com)

Springfield, MN





- **Drafting & Design Service**
- **Consultation Service**

New Homes  
Pole Buildings  
Building Additions  
Remodel/Renovations  
Kitchen Layouts  
Decks  
Garages

CR Consulting & Design  
Construction Consultation & Design.

### New Home Plans



Slab on Grade



2-Story



Elevations    Foundation Plan  
Floor Plans    Wall Sections  
Site Plan    Detail Pages

### Pole Buildings



Machinery Storage Options



Shop House and Shop Office Options



Post Layouts, Wall Sections & Detail Drawings

### Kitchen Designs



3D Renderings




Floorplan Layouts

### Fee Schedule


- Upfront pricing information based on type/size of project.
- Start/Stop at any point in the Process.
- Full-size print copies provided
- PDF Digital files provided for distribution.

### Remodeling



Site Visit to map out existing floorplan  
Concept drawings with options

### Decks

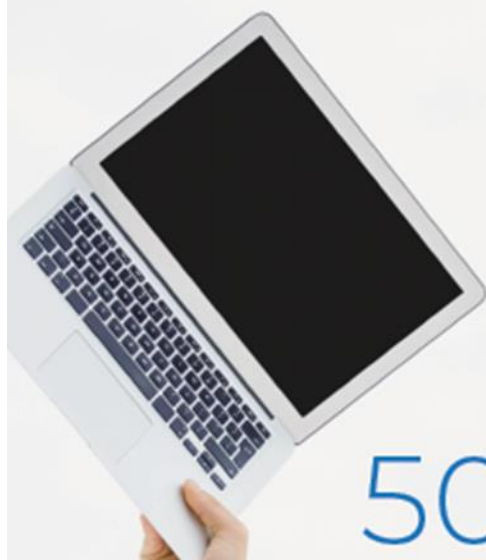


Our Office is located on Central Street in Springfield. Parking and customer entrance is around the rear of the home, accessed through the alley. We are open by Appointment Only.



CR Consulting & Design  
520 West Central Street  
Springfield, MN 56087  
Phone: 507.276.9611  
E-mail: crothmeier@gmail.com





ARG!  
GET TECH HELP AT  
507-276-5059

**TECH|UNLIMITED**

YOUR ONE STOP FOR TECHNOLOGY NEEDS

[techunlimitedllc.com](http://techunlimitedllc.com)



---

# SPRINGFIELD GOLF CLUB

---

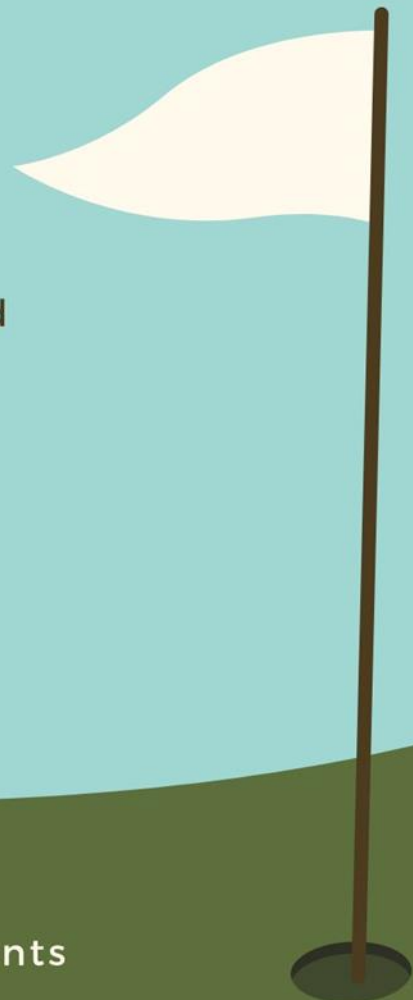
## OPEN TO THE PUBLIC

The clubhouse is OPEN year round  
Every Thursday & Friday @5pm

651 S O'Connell Street  
Springfield MN, 56087

507-723-5888

Follow us on Facebook  
Contact us for your upcoming events





## Contact

# Springfield Floral & Decor by Char

1 E. Central Street, Springfield, MN 56087 ~ 507.723.6764

*For all your Fresh Floral and Wedding Decor needs!!*



# Jack Larson Seeds

**Your local independent  
Dekalb - Asgrow Dealer**

*We have the staff and equipment  
to service all of your seed needs year round!*

Agronomic Support and Field Scouting  
Seed Delivery to your farm or field  
CRP & Cover Crop Seed and Drilling  
Field View™ Installation and Support

**Custom  
Soybean  
Drilling  
and Air Seeding**

Custom Hydro-Seeding  
Monitor Calibrations  
Planter Prescriptions  
Drone Services



# Larson Crop Insurance

**Contact us with any  
Crop Insurance Questions**

Laurie Hoffbeck's cell ~ 507-829-8367

Jack's cell ~ 507-829-5189

Johnny's cell ~ 612-207-6542

Steve's cell ~ 507-828-3164

Evan's cell ~ 507-822-3545

Colin's cell ~ 507-430-0558

**Grow  
WITH Us**



**507-723-4302**

**Available 24-7**

**[www.jacklarsonseeds.com](http://www.jacklarsonseeds.com)**





# Entrepreneurs

*Come & Go  
Coffee*

*For more information*

*Contact:*

**Joe Stremcha**

**507-723-3500**

**Every 4<sup>th</sup> Wednesday of the month**

**7:30 a.m. – 10:30 a.m.**

**Springfield Area  
Community Center**

Kickstart Springfield Come and Go Coffee Group meets on the fourth Wednesday of each month. Business owners and entrepreneurs are invited to join. Please come and enjoy a cup of coffee and meet with fellow entrepreneurs and business owners.

This will be an excellent opportunity to network, meet with advisors and have 1-on-1 consultations with peers and members of the Kickstart Springfield Board.

The core focus of Kickstart Springfield is to create a vibrant economy by finding and supporting start-ups and local entrepreneurs including business startups to existing businesses that want to grow.



**Kickstart  
Springfield**

**ENTREPRENEUR  
HUB**





# CITY OF SPRINGFIELD EMERGENCY ALERTING AND NOTIFICATION SYSTEM



Dear Residents,

The *City of Springfield* wants you and your family to be safe and informed during emergencies in our area. These may include public safety threats, dangerous weather, and traffic advisories. Information is key, and we strongly encourage you to sign up to receive text message alerts directly from the City of Springfield.

Registering for alerts is easy — simply text the Keyword below to **888777** and you'll be informed and instructed when necessary.

- **56087** (Springfield Community & Emergency Alerts)
- **CENTRAL2020** (Weekly Central Street Project Updates)
- **SNOWFALL** (Snow Removal Updates)

**TEXT THE KEYWORD TO 888777  
TO SIGN UP FOR ALERTS**



powered



## Springfield Chamber of Commerce

33 South Cass Avenue \*PO Box 134

Springfield, MN 56087

507-723-3508

[spfdchamber@newulmel.net](mailto:spfdchamber@newulmel.net)

[www.springfieldmnchamber.org](http://www.springfieldmnchamber.org)

Denise Gicker

Executive Director

Monday- Friday 9 am – 1 pm



Chamber Chatter is a publication of the  
Springfield Chamber of Commerce.  
It is published monthly to keep members  
and friends informed on events, activities,  
and programs in and around the community.

**Mission Statement** – The mission of the Springfield Area Chamber of Commerce/CVB is to strengthen the business community and take a leadership role in promoting economic growth in a spirit of cooperation and team work.

**Vision Statement** – Promote economic growth through the recruitment and retention of quality businesses and industries that will contribute to the overall economic health of the community. Provide the membership networking opportunities, referrals, internet promotion and other membership services to promote and enhance their business. Develop and nurture relationships with local government and other community sectors to help facilitate the needs and interests of the business community and enhance the overall quality of life within the community.

## Chamber of Commerce General Board of Directors 2022

President- Mike Granda- Farmers & Merchants State Bank

Vice President- Wendy Krier- Springfield Advance-Press

Dan Anderson- Springfield Market

Chrissy Boerboom- St. John's Circle of Care

Amanda Frank – Reiner Real Estate

Joe Stremcha - City of Springfield Representative

Deb Miesen- Miesen's Color Center

Kayla Berberich- SouthPoint Financial Credit Union

Deb Wahl- Massage & Bodywork by Deb Wahl