

# *CHAMBER CHATTER*



## *March 2023*

**March 2<sup>nd</sup>** - Riverside Days Planning Meeting

**May 4<sup>th</sup>-6<sup>th</sup>** - Spring Garage Sale

**May 1-6<sup>th</sup>** - Spring Plant Giveaway (details to come)

**June 21<sup>st</sup>** - Springfield Chamber Golf Tournament

**June 21<sup>st</sup>-25<sup>th</sup>** - Riverside Days

\*Please share the Chamber Chatter Newsletter with your employees. The newsletter is also now available on the Chamber website at <https://springfieldmnchamber.org/chamber-chatter/>. It will also be posted on Facebook when the current newsletter is available on the Chamber Website.

If there are additional email addresses you would like me to add to make sure our newsletter is getting to all who are interested, please let me know by emailing me at [spfdchamber@newulmtel.net](mailto:spfdchamber@newulmtel.net) and I would be happy to add them to the email list.

Springfield Chamber of Commerce

Thank You and Welcome  
to Our New Members

6 East  
Crissy's Engraving  
Elite Haircare by Allissa  
Functional Fitness  
Lund Power Washing  
Peichel's Lawn Irrigation

WE LOOK FORWARD TO MAKING 2023 AMAZING


IF YOU ARE INTERESTED IN BECOMING A MEMBER OR HAVE ANY  
QUESTIONS PLEASE CALL THE CHAMBER OFFICE 507-723-3508

SAVE THE  
DATE

**JUNE 21**  
**2023**

15th Annual  
Springfield Chamber  
Golf Tournament





CHRISTIAN WOMEN'S

# *Morning of Reflection*

ST. RAPHAEL CATHOLIC CHURCH

20 W VAN DUSEN ST, SPRINGFIELD, MN

MARCH	8:30 AM-	ALL WOMEN
4, 2023	12:00 PM	WELCOME

THE MORNING WILL INCLUDE:

MASS

BREAKFAST

SOCIAL TIME

REFLECTIVE OPPORTUNITIES

RSVP APPRECIATED BUT NOT REQUIRED:  
SARAH BOETTGER (507)227-5597 (CALL OR TEXT)



# DRIVE THRU ONLY

## MEN'S DINNER

**Sunday, April 16, 2023**

**9:30am-12:30pm**

Sausage, Homemade Sauerkraut,  
Mashed Potatoes & Gravy, Bun, Cookie

Meal Price            \$ 12.00



Delivery inside city limits

★ Call 723-4139 by 11:00am to place your order

Meal Pick up

★ Available behind the North East corner of school

**Sponsored by Catholic Order of Foresters St. Thomas Court 766**  
**Up to \$1500 in matching grant funds**

## Church of St. Raphael

## Springfield, MN

# STUDENT BANKPACK

We're here for you,  
wherever life takes you.



F&M Student Backpack Ambassadors:  
McKenna Granda, Dalton Langseth, Ben Potter

**YOUR future.YOUR bank.**




Building Relationships.  
Making a Difference.

## Student Backpack Benefits:

- ✓ FREE Mobile Banking & Mobile Deposit\*
- ✓ FREE Debit Card\*\*
- ✓ FREE Online Banking & Bill Pay
- ✓ FREE Online Statements
- ✓ FREE Checks
- ✓ No Minimum Balance Requirements
- ✓ No Service Charges
- ✓ Card Control\*
- ✓ Scholarship Opportunities
- ✓ \$10 Fun Money

Springfield | Morgan | [fmb-ebank.com](http://fmb-ebank.com)

F&M's Student Backpack offered exclusively to our customers who are full time students, up to 24 years of age.  
\*Data rates may apply. \*\*Parent/guardian cosign may be required. There is a small fee to replace a card.

 Equal Housing Lender

FMB822

Member FDIC



## Redwood Financial Advisors

thrivent

### Your business— our solutions

You've worked long and hard to get your business to where it is today. Have you thought about what would happen if something unexpected happened, like losing a critical employee?

At Redwood Financial Advisors, we offer solutions to help meet your business needs—so you can protect and strengthen what you've built with comprehensive insurance solutions and retirement strategies designed for your business and your future.

Contact us today to learn more

**Nancy Hansen, Financial Advisor • Kelly Pierson, Insurance Associate**

507-723-5454 • [thrivent.com/redwood](http://thrivent.com/redwood) • 12 W. Central, Springfield, MN 56087



Thrivent is the marketing name for Thrivent Financial for Lutherans. Insurance products issued by Thrivent. Not available in all states. Securities and investment advisory services offered through Thrivent Investment Management Inc., a registered investment adviser, member FINRA and SIPC, and a subsidiary of Thrivent. Licensed agent/producer of Thrivent. Registered representative of Thrivent Investment Management Inc. [Thrivent.com/disclosures](http://Thrivent.com/disclosures).

Insurance products, securities and investment advisory services are provided by appropriately appointed and licensed financial advisors and professionals. Only individuals who are financial advisors are credentialed to provide investment advisory services.

5420161.1

## And the award goes to... *Springfield Advance-Press* Award Winning Author & Design Team



### The Golden Ages Yearbook Magazine Volume One

Minnesota Newspaper Association  
Better Newspaper Contest

### First Place Best Magazine

Weekly newspapers with subscriptions  
of up to 1,500 category

Jeff Krueger, Author  
Sally Anderson, Design  
Kimberly Hagert, Design  
Wendy Krier, Publisher



### Brave the Barrels - Conquer the Cones

Minnesota Newspaper Association  
Better Newspaper Contest

### Third Place Advertising Campaign

Weekly newspapers with subscriptions  
of up to 1,500 category

Sally Anderson, Design



# *The Golden Ages*

## 2022 YEARBOOK MAGAZINE

Volume 2 is full color glossy magazine style book  
about Springfield's events, places, and people of the past.

**NOW AVAILABLE**

*These are stories that go beyond the history books!*

Each story comes from the popular monthly series *The Golden Ages*,  
written by Jeff Krueger, published in the *Springfield Advance-Press*.

These stories are expanded versions of the printed articles  
and include additional photos. Plus, two bonus stories.

*Springfield* **Advance-Press**

[www.springfieldap.com](http://www.springfieldap.com)

13 S. Marshall Ave | 507-723-4225 | [creative@springfieldap.com](mailto:creative@springfieldap.com)





# St. Paul Lutheran Church

303 N Cass Ave, Springfield

## GERMAN SUPPER



### SAVE THE DATE

**Wednesday, April 19, 2023**

from 4:30 – 6:00 or Sold Out





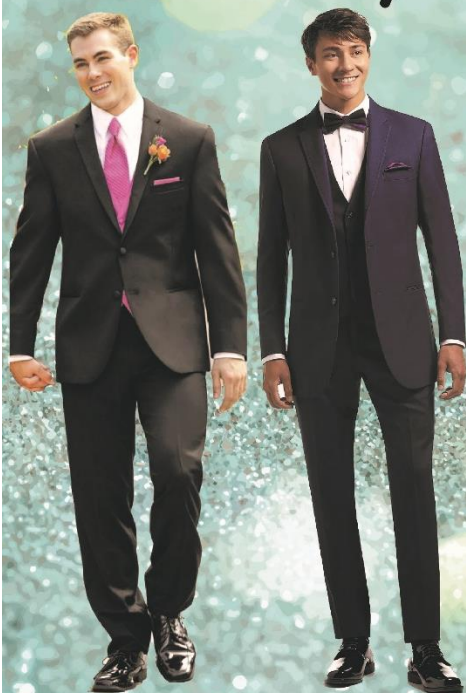
**Book your Tux  
and order Flowers at the same time**

# PROM

## Booking Night!

**Tuesday, March 28 4-8 PM**

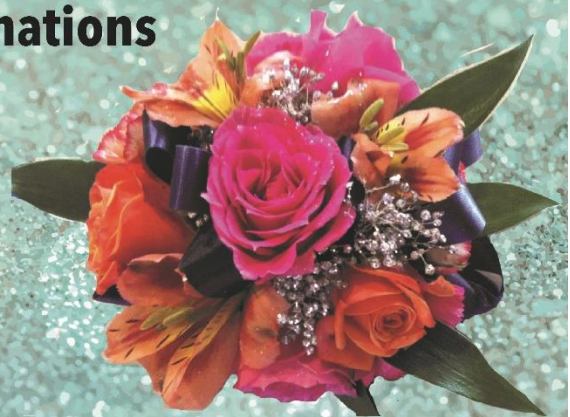
**at** *Springfield Floral*



**Over 40 tuxedo styles and  
thousands of colorful accessory  
combinations**



***Both Fresh  
& Silk Florals***



1 E. CENTRAL | CHAR FRANK, OWNER | 723-6764  
STORE HOURS: MON.-FRI. 9-5 | SAT. 9-2





**The Kitchen Table Ministry invites you to come and eat with family and friends and maybe even make new friends!**

**An evening meal will be served every Thursday evening from 5:30-6:30 p.m. All are invited to come and eat. *There is no charge for the meal.***

**WHEN:    Thursdays ~ 5:30-6:30 p.m.**

**WHERE:   St. Johns Lutheran Church  
             224 Mary Avenue  
             Springfield, MN**

**COST: FREE**







**Would you leave your business unlocked after leaving for the day? So, why would you leave your network unlocked?**

**Nuvera's team of experts can protect your network even after you've left for the day.**

Last year, 23% of small businesses suffered a cyber attack, with the average cost being \$25,000.

If you don't want to be a statistic, get Nuvera's network security solutions.

To request a free consultation and learn more call **844.610.5300** or visit us online at **[nuverabusiness.com/endpoint-security](https://nuverabusiness.com/endpoint-security)**.

Nuvera 

# MVTV wireless internet provider

powered by  
**Plume HomePass®**

*'Serving customers beyond connectivity'*



"Here at the LFN, we depend on  
MVTV Wireless every day!"

~ Lynn Ketelsen,  
Linder Farm Network

**320-564-4807**

[www.mvtvwireless.com](http://www.mvtvwireless.com)

- ✓ Robust, fully-supported network
- ✓ Local technical & customer support
- ✓ Community service built on integrity
- ✓ Referral Program
- ✓ Worry Free Connectivity with  
MVTV's Managed Wifi Service



**Full-Service Broadband Internet Provider**





# Brown County Historical Society

presents

## TELL ME MORE

*Notable Women of Brown County*



Barbara Dorn

Hosted  
By:



Rosa Penning  
Schnobrich



Arline Schmiesing



Elizabeth Scobie



Doris Aufderheide

**Thursday, March 30, 2023**

At the New Ulm Best Western Plus, 2101 S. Broadway St., New Ulm, MN

**6:00 PM Buffet Dinner-7:00 PM Program**

(Soup, Sandwich & Sweet)

**\$25.00 Per Person**

Purchase Tickets at the BCHS Museum or at the

New Ulm Chamber of Commerce

Call 233-2621 for more information

*This program is made possible with support from the Marjorie F. Gislason speaker series sponsored by Dan and Nancy Gislason.*



# Brown County Historical Society

## Exhibit:

## *What's New?*



*What's New?* is the Brown County Historical Society's newest exhibit that features artifacts recently added into the museum's historic collections.



Exhibit open March 2023 - February 2023

Call 507-233-2616 for more information

Brown County Historical Society  
2 North Broadway Street, New Ulm, MN 56073





# SouthPoint<sup>®</sup>

## Financial Credit Union

### PICK A TERM, ANY TERM!

Choose the Certificate of Deposit term that works for you. Scan the QR code below or visit [bit.ly/SPFCUpickyourtermcd](https://bit.ly/SPFCUpickyourtermcd) for this offer.

# 4.30%APY\*

Certificate of Deposit with new deposits

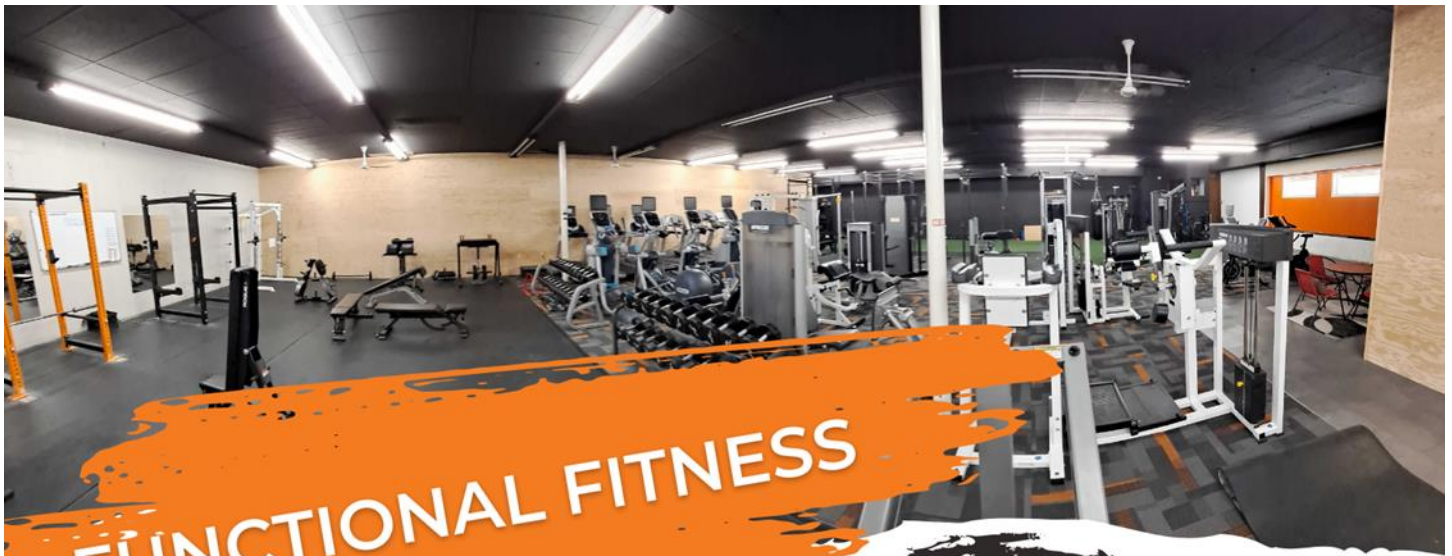
# 4.09%APY\*

Certificate of Deposit with current deposits



\*APY=Annual Percentage Yield. Rates Effective as of February 7, 2023. Promotion for 7-Month Certificate is for a limited time only. The minimum balance to open a 7-Month certificate, when offered, is \$1,000. To obtain the 4.30% APY your total deposit (100%) must be comprised of new money (not previously on deposit with SouthPoint Financial Credit Union). If any portion of your initial certificate of deposit is currently on deposit with SouthPoint Financial Credit Union you will receive a rate of 4.09% APY on your new 7-Month Certificate. Certificate rate remains fixed for the term of the certificate. A penalty may be imposed for withdrawals before maturity of Certificate. Limit of \$500,000 deposited per household. The 7-Month Certificate promotion will roll into a 6-Month Certificate at maturity. \*\*APY=Annual Percentage Yield. Rates Effective as of February 7, 2023. Promotion for 11-Month Certificate is for a limited time only. The minimum balance to open an 11-Month certificate, when offered, is \$1,000. To obtain the 4.30% APY your total deposit (100%) must be comprised of new money (not previously on deposit with SouthPoint Financial Credit Union). If any portion of your initial certificate of deposit is currently on deposit with SouthPoint Financial Credit Union you will receive a rate of 4.09% APY on your new 11-Month Certificate. Certificate rate remains fixed for the term of the certificate. A penalty may be imposed for withdrawals before maturity of Certificate. Limit of \$500,000 deposited per household. The 11-Month Certificate promotion will roll into a 12-Month Certificate at maturity. Federally Insured by NCUA. \*\*\*APY=Annual Percentage Yield. Rates Effective as of February 7, 2023. Promotion for 21-Month Certificate is for a limited time only. The minimum balance to open a 21-Month certificate, when offered, is \$1,000. To obtain the 4.30% APY your total deposit (100%) must be comprised of new money (not previously on deposit with SouthPoint Financial Credit Union). If any portion of your initial certificate of deposit is currently on deposit with SouthPoint Financial Credit Union you will receive a rate of 4.09% APY on your new 21-Month Certificate. Certificate rate remains fixed for the term of the certificate. A penalty may be imposed for withdrawals before maturity of Certificate. Limit of \$500,000 deposited per household. The 21-Month Certificate promotion will roll into an 18-Month Certificate at maturity. Federally Insured by NCUA.

[www.southpointfinancial.com](https://www.southpointfinancial.com) | 877-794-6712 | Federally Insured by NCUA



# FUNCTIONAL FITNESS

## FREE 7-DAY PASSES

AVAILABLE TO LOCAL BUSINESSES &  
THEIR EMPLOYEES

TO GET STARTED



*Call or email  
us today*



*Stop By*

WE ARE STAFFED MONDAY TO  
THURSDAY 8 AM to 3 PM.



**CONTACT US**

15 N Marshall Ave  
Springfield, MN 56087

507-448-5646  
ffspringfieldmn@gmail.com



**Now leasing in Springfield, MN!**

# **Downtown Estates**

**102 Lincoln Street, Springfield MN**

Rental assistance may be available for those who qualify! Rent for as low as 30% of income!

**Call Ashley Today! 507-327-2137**

Utilities included: Heat, water, sewer, & garbage

20 Elderly units (62yrs+, handicap or disabled)

FREE Guest Apartment for family!

Community Room with full kitchen & meals served 5 days a week

Elevator

Patio

On-site laundry

Personal parking in lot

On-call caretaker/maintenance

One block from downtown



**1-bedroom units**





The Minnesota FoodShare/March Campaign brings together organizations, businesses, faith communities, and individuals to help keep 300 food shelves statewide stocked throughout the year. Minnesota FoodShare has distributed over \$18 million to March Campaign participating food shelves via the Minnesota FoodShare Food-Fund. 100% of donations received by Minnesota FoodShare during the March Campaign go into the Food-Fund.

THE 2023 MARCH CAMPAIGN WILL RUN FEBRUARY 27<sup>th</sup>-APRIL 9<sup>th</sup>.

Please consider making a monetary donation or food donation to the Springfield Area Food Shelf during this campaign. Collection boxes have been placed in the local churches in Springfield/Comfrey as well as the local Springfield Market. Please do not put money donations in the collection boxes.

Mailing address is PO Box 15, Springfield , MN 56087

If you have any questions, please call Shari Koll at 507-227-0386.





# REDWOOD AREA CONSIGNMENT AUCTION

Tuesday, May 16th @ 10:00 am

Live &  
Online  
Auction



Kerkhoff Auction Center  
1500 E Bridge St., Redwood Falls, MN

## Accepting Consignments of...

Farm & Livestock Equipment

Trucks & Trailers

Construction Equipment

Lawn & Recreation Equipment

**AD DEADLINE: April 7th at NOON**

**[www.kerkhoffauction.com](http://www.kerkhoffauction.com)**

For More Information:

**ZAC KERKHOFF**

507-829-3924 or

**DOUG KERKHOFF**

507-829-6859



## Massage & Bodywork

Deb Wahl, CMT

507-626-0567

Call or Text for an Appointment

[debs.wahl@yahoo.com](mailto:debs.wahl@yahoo.com)

# CLEMENTS LUMBER INC.

SPRINGFIELD – MORGAN – COMFREY – REDWOOD FALLS

(507)723-2230 (507)249-3122 (507)877-2026 (507)644-2100

"For all your building needs: residential, commercial, agricultural and remodeling."

Clements Lumber is a Valspar Dealer.  
For all your paint needs!







Bar Bingo every Saturday starting at 2 pm  
through March for sure!

No reservations will be taken unless needed for  
wheelchairs!

Hope to see everyone back for another fun year!



# Show your Support for the Springfield Tigers Basketball teams

[www.deluxeprint.biz](http://www.deluxeprint.biz)



Order online or contact me directly



[www.deluxeprint.biz](http://www.deluxeprint.biz)



# NOW OFFERING 3D MAMMOGRAPHY

Allina Health is continuing to make improvements to women's health by upgrading Springfield Clinic with 3D mammography and a new ultrasound coming soon!



Springfield Clinic  
625 N Jackson Avenue  
Springfield, MN 56087  
507-723-6201  
[allinahealth.org/springfield](http://allinahealth.org/springfield)





**DRS. AKRE & CLARK**  
FAMILY EYE CARE



Springfield: Est. 2019

## Over 70 Years

Of serving Brown County  
and surrounding areas

Monday 8 am - 5 pm  
Tuesday 9 am - 6 pm  
Wednesday 8 am - 5 pm  
Thursday 9 am - 6 pm  
Friday 8 am - 5 pm

1715 S. Broadway  
New Ulm, MN 56073  
**507-354-8531**

## The Mission Statement of Drs. Akre & Clark

Our health care team is committed to  
providing our patients with unsurpassed  
comprehensive eyecare.

We will provide personalized care,  
demonstrate sincere concern, and present  
meaningful education to each patient in  
order to enhance their quality of life.

We pledge the highest ethical standards  
and continued education to remain at the  
technological forefront of our profession.

623 W. Rock St  
Springfield, MN 56087  
**507-723-2020**



# Join our Team of Super Heroes

If you are a caring individual and interested in becoming employed by St. John's Circle of Care, apply online:

[sjlhome.com/employment/](http://sjlhome.com/employment/)  
or pick up an application  
at St. John Lutheran Home



**WE'RE  
HIRING!**



We have a job to fit everyone's skills and abilities in various departments throughout our campus at St. John Lutheran Home and The Maples.

#### **Positions Open Now**

- Nursing
- Dietary
- Plant operations
- Child daycare

Ask about our  
Chamber Bucks  
giveaway!



**ST. JOHN'S  
CIRCLE OF CARE**

A TRADITION... FOR ALL AGES

507-723-3200  
Springfield, MN  
[www.sjlhome.com](http://www.sjlhome.com)



Cottonwood Ridge Apartments  
712 East Cottonwood Street  
Springfield, MN 56087



Call for a Tour: [\(507\) 723-4500](tel:5077234500)

## Independent Senior Living, Affordably Priced.

Cottonwood Ridge Senior Apartments offers a warm, comfortable, clean setting, privacy and a chance to socialize with other friendly tenants in beautiful common areas. Sit back, relax and enjoy your freedom at Cottonwood!

Cottonwood offers private apartments for people age 62 or over. Tenants pay rent of 30% of their adjusted gross income after medical expenses. Rental assistance is provided by the Department of Housing and Urban Development (HUD) for eligible seniors. Heat is included in rent.

### Special Features Include:

- 23 one-bedroom private apartments
- Controlled access entry system
- In-house pull-cord alarm system
- Library
- Live in caretaker
- Laundry Facilities
- Whirlpool Bath
- Access to cable TV
- Parking lot space & Car Plug-in
- Tenant sponsored social programs
- Individual Storage Units
- TV lounge
- Common area dining room/kitchen
- Outdoor Patio
- Small pets welcome
- Gardening and walking path
- Seated shower option
- Exercise Equipment







We have a job to fit everyone's skills and abilities in various departments throughout our campus. If you are a caring individual and interested in becoming part of our team, apply online:

[sjhome.com/employment/](http://sjhome.com/employment/)

Or pick up an application at St. John Lutheran Home.

## *Live life on your own terms.*

We make day to day living easier by offering the right amount of services and care at the right time, and around the clock staffing for any unanticipated needs.

## *Personalized Living*

We take time to know your life stories, your likes and dislikes, your family, friends and your dreams.

The Maples at St. John is located on the east side of Springfield, MN on the St. John Circle of Care campus.

## *Schedule a Tour!*

[chrisyb@sjlhome.com](mailto:chrisyb@sjlhome.com) or 507-723-3250

*The Maples*   
AT ST. JOHN

507-723-3250

301 S. County Road 5 • Springfield, MN

[www.sjlhome.com](http://www.sjlhome.com)



**WE'VE MOVED!**



**HAS A NEW  
ADDRESS!**



104 N MARSHALL AVE  
SPRINGFIELD MN 56087  
PHONE: (507) 227-8767





11 E Rock Street  
Springfield, MN 56087  
507-723-5721

**Monday Special**

**TACO SALAD**

**\$4.00** Reg. \$4.99

Large Bowl

Beef or Chicken

**Taco Express**

**Wednesday Special**

**TACOS**

**2 \$3** Reg. \$1.99

Hard or Soft Shell Tacos

Beef or Chicken

**Thursday Special**

**Taco Express**

**WALKING TACOS**

**\$3** Reg. \$4.79

Regular Size

Beef or Chicken



## **+ Lance Deeter, DO**

FAMILY MEDICINE

### Accepting Patients in Springfield

#### **Professional Interests:**

- Practice broad spectrum outpatient family medicine
- Special interest in lifestyle preventative medicine, osteopathic manipulation, and geriatrics
- Dermatologic procedures (shave/punch biopsy, cyst removals), toenail removal)
- Orthopedic procedures(shoulder and knee injections)
- Newborn circumcisions, and
- GU procedures (IUD placement/removal, Nexplanon placement/removal).

#### **Patient Comments:**

"Very kind and considerate. Really listened to what I had to say."

"The care and professionalism is outstanding"

"I am looking forward to having Dr. Lance Deeter as my primary doctor."

[allinahealth.org/springfield](http://allinahealth.org/springfield)

**Allina Health** 



# Red Rock Bank

## Hours

Monday-Friday  
9:00 a.m.-4:00 p.m.



**Our Team Members**



**Online & Mobile Banking**

ONLINE BANKING LOGIN



**Customer Service & Loans**

**Serving our communities – Past Present Future**

2 S Marshall Ave  
Springfield, MN 56087  
507-723-7300  
[www.RedRockBank.com](http://www.RedRockBank.com)  
Facebook-RedRock Bank

# BROWN



Est.

2021

## TREE SERVICE

- ♦ Tree Removal
- ♦ Tree Trimming
- ♦ Stump Removal
- ♦ Storm Clean Up
- ♦ Free Estimates
- ♦ 24 Hour Emergency Service
- ♦ 15 Years Experience
- ♦ Fully Licensed & Insured

## Brown Tree Service, LLC

Douglas Brown 507-220-0672

Brigette Brown 507-220-0243

[browntreeservicemn@yahoo.com](mailto:browntreeservicemn@yahoo.com)

Springfield, MN





- **Drafting & Design Service**
- **Consultation Service**

New Homes  
Pole Buildings  
Building Additions  
Remodel/Renovations  
Kitchen Layouts  
Decks  
Garages

CR Consulting & Design  
Construction Consultation & Design.

## New Home Plans



Slab on Grade



2-Story



Elevations Foundation Plan  
Floor Plans Wall Sections  
Site Plan Detail Pages

## Pole Buildings



Machinery Storage Options



Shop House and Shop Office Options



Post Layouts, Wall Sections & Detail Drawings

## Kitchen Designs



3D Renderings



Floorplan Layouts

## Fee Schedule

- Upfront pricing information based on type/size of project.
- Start/Stop at any point in the Process.
- Full-size print copies provided
- PDF Digital files provided for distribution.

## Remodeling



Site Visit to map out existing floorplan

Concept drawings with options



## Decks



Our Office is located on Central Street in Springfield. Parking and customer entrance is around the rear of the home, accessed through the alley. We are open by Appointment Only.



CR Consulting & Design  
520 West Central Street  
Springfield, MN 56087  
Phone: 507.276.9611  
E-mail: crothmeier@gmail.com



---

# SPRINGFIELD GOLF CLUB

---

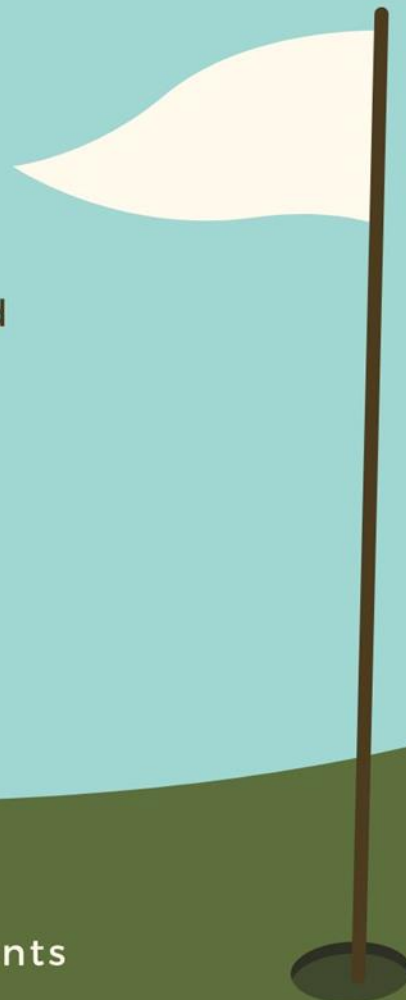
## OPEN TO THE PUBLIC

The clubhouse is OPEN year round  
Every Thursday & Friday @5pm

651 S O'Connell Street  
Springfield MN, 56087

507-723-5888

Follow us on Facebook  
Contact us for your upcoming events





# Jack Larson Seeds

**Your local independent  
Dekalb - Asgrow Dealer**

*We have the staff and equipment  
to service all of your seed needs year round!*

Agronomic Support and Field Scouting  
Seed Delivery to your farm or field  
CRP & Cover Crop Seed and Drilling  
Field View™ Installation and Support

**Custom  
Soybean  
Drilling  
and Air Seeding**

Custom Hydro-Seeding  
Monitor Calibrations  
Planter Prescriptions  
Drone Services



**Grow  
WITH Us**



**507-723-4302**

# Larson Crop Insurance

**Contact us with any  
Crop Insurance Questions**

Laurie Hoffbeck's cell ~ 507-829-8367

Jack's cell ~ 507-829-5189

Johnny's cell ~ 612-207-6542

Steve's cell ~ 507-828-3164

Evan's cell ~ 507-822-3545

Colin's cell ~ 507-430-0558

**Available 24-7**

**[www.jacklarsonseeds.com](http://www.jacklarsonseeds.com)**



**DODGE // Jeep**

**Kawasaki**

**[www.JensenMotors.com](http://www.JensenMotors.com)**

**[www.JensenChryslerDodgeJeepRAM.com](http://www.JensenChryslerDodgeJeepRAM.com)**



**DRS. AKRE & CLARK**  
FAMILY EYE CARE

BUY ONE GET ONE  
**50%**  
OFF

50% Off any additional frame and lenses. Cannot be combined with any other insurance plans or packages. See an Optician for details.



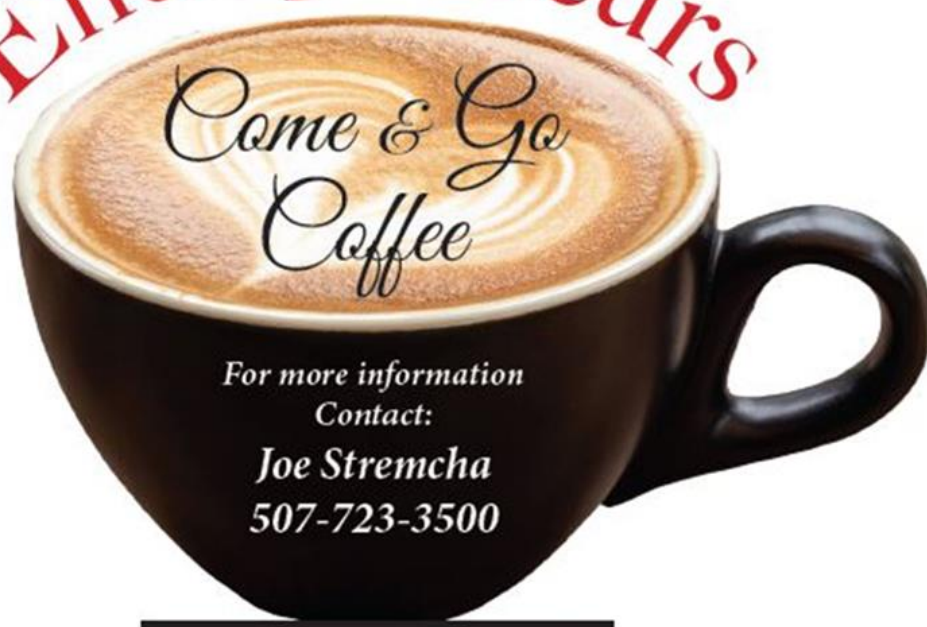
1715 S. Broadway  
New Ulm, MN 56073  
**507-354-8531**

623 W. Rock St  
Springfield, MN 56087  
**507-723-2020**

1111 2nd St. NE  
Waseca, MN 56093  
**507-835-2020**



# Entrepreneurs



**Every 4<sup>th</sup> Wednesday of the month**  
**7:30 a.m. – 10:30 a.m.**  
**Springfield Area**  
**Community Center**

Kickstart Springfield Come and Go Coffee Group meets on the fourth Wednesday of each month. Business owners and entrepreneurs are invited to join. Please come and enjoy a cup of coffee and meet with fellow entrepreneurs and business owners.

This will be an excellent opportunity to network, meet with advisors and have 1-on-1 consultations with peers and members of the Kickstart Springfield Board.

The core focus of Kickstart Springfield is to create a vibrant economy by finding and supporting start-ups and local entrepreneurs including business startups to existing businesses that want to grow.



**REV**  
RURAL ENTREPRENEURIAL VENTURES  
DISCOVER • HUNTE • GROW

# CITY OF SPRINGFIELD EMERGENCY ALERTING AND NOTIFICATION SYSTEM



Dear Residents,

The *City of Springfield* wants you and your family to be safe and informed during emergencies in our area. These may include public safety threats, dangerous weather, and traffic advisories. Information is key, and we strongly encourage you to sign up to receive text message alerts directly from the City of Springfield.

Registering for alerts is easy — simply text the Keyword below to **888777** and you'll be informed and instructed when necessary.

- **56087** (Springfield Community & Emergency Alerts)
- **CENTRAL2020** (Weekly Central Street Project Updates)
- **SNOWFALL** (Snow Removal Updates)

**TEXT THE KEYWORD TO 888777  
TO SIGN UP FOR ALERTS**



powered





## Springfield Chamber of Commerce

33 South Cass Avenue \*PO Box 134

Springfield, MN 56087

507-723-3508

[spfdchamber@newulmel.net](mailto:spfdchamber@newulmel.net)

[www.springfieldmnchamber.org](http://www.springfieldmnchamber.org)

Denise Gicker

Executive Director

Monday- Friday 9 am – 1 pm



Chamber Chatter is a publication of the  
Springfield Chamber of Commerce.  
It is published monthly to keep members  
and friends informed on events, activities,  
and programs in and around the community.

**Mission Statement** – The mission of the Springfield Area Chamber of Commerce/CVB is to strengthen the business community and take a leadership role in promoting economic growth in a spirit of cooperation and team work.

**Vision Statement** – Promote economic growth through the recruitment and retention of quality businesses and industries that will contribute to the overall economic health of the community. Provide the membership networking opportunities, referrals, internet promotion and other membership services to promote and enhance their business. Develop and nurture relationships with local government and other community sectors to help facilitate the needs and interests of the business community and enhance the overall quality of life within the community.

## Chamber of Commerce General Board of Directors 2022

President- Mike Granda- Farmers & Merchants State Bank

Vice President- Wendy Krier- Springfield Advance-Press

Dan Anderson- Springfield Market

Chrissy Boerboom- St. John's Circle of Care

Amanda Frank – Reiner Real Estate

Joe Stremcha - City of Springfield Representative

Deb Miesen- Miesen's Color Center

Kayla Berberich- SouthPoint Financial Credit Union

Deb Wahl- Massage & Bodywork by Deb Wahl