

Merry Christmas

Everyone at Lang's Automotive wishes all our customers a safe and Happy Holidays!



417 West Rock Street
Springfield, MN 56087
507-496-1556

Red Rock Bank

Hours

Monday-Friday
9:00 a.m.-4:00 p.m.



Our Team Members



Online & Mobile Banking

ONLINE BANKING LOGIN



Customer Service & Loans

Serving our communities – Past Present Future

2 S Marshall Ave
Springfield, MN 56087
507-723-7300
www.RedRockBank.com
Facebook-RedRock Bank



The Springfield Area Food Shelf has had a very busy 2022. Total monthly households served thru October has been 587-individuals-1479

Some issues we have had to deal with in the past 6 months is the rising cost of grocery prices, increasing our volunteer base, starting with the healthy food first, we have also been starting earlier to accommodate the increase in numbers of clients coming in to receive groceries, making more space for inventory, looking at other ways for funding. We have been averaging a spending cost for food of approximately \$4000.00-\$5000.00. In June-64 families-157 individuals, July-71 families-201 individuals, August-62 families- 161 individuals, September-61 families- 177 individuals, October-59 families-150 individuals. Month of November is not completed but 66 families have used the service so far.

Commodities are down and not as available anymore. We are paying for more meat products than ever since food shelf was established. We are looking for ways to save money and watch for sale items. Clients come once a month and have been very appreciative of everything they get for food and stipends. Organizations are good about monetary donations as well as food collections. We are using our food bank, Second Harvest Heartland and can get food products at reduced prices We watch sale items in the local Market in Springfield. We do Food Rescue with our local Market in Springfield.

We will begin Food Rescue with Aldi's in New Ulm on Monday and Wednesday mornings. We are looking for volunteers to drive to New Ulm and pick up product and bring it back to the food shelf. This will be put out to the clients. It will include produce, meat, dairy products, bakery, as well as dry products. We will provide a gift voucher for your service to help with gas. If you are interested in becoming a volunteer for this service, please call Shari Koll 507-227-0386 or Dave Carruthers 507-276-6679 to discuss details.

We have also been working with the New Ulm Food Shelf and they have given us some food Rescue products which has really helped.

Food Shelf hours continue to be Tuesday evening, 5-7pm and Thursday morning 9:30am-11:30am. Depending on number of appointments we have, we have been starting earlier if needed. We are trying to establish a set time frame before we actually change the hours on our printed information. We encourage individuals to call ahead and set up appointment to come in. We will still add 3 or more to list by the end of the shift. Call the food shelf phone number and leave your name and number and we will call you back (723-3663).

Volunteers are always welcome to do a variety of jobs. If you would like to do something on a service day, fill bags for the school program, deliver bags to the schools every 2 weeks, truck delivery two times per month (2nd& 4th Tuesday each month) food rescue, Naps box delivery in Springfield monthly, cleaning approximately 2 hours a week on Thursday afternoon at the food shelf.

Please consider making a donation to your local food shelf in 2022. PO Box 15, Springfield, MN 56087

Thank you to all the volunteers who work so hard to make this project available in our communities of Springfield, Sanborn, Comfrey, Clements, and Cobden. We cannot do this without your support. I have always said "it takes a village to raise a child", it also takes a village to run/provide a food shelf in your community.

Shari Koll-11-28-2022

KDOMradio
1580 AM 103.1 FM



*Merry Christmas from all of us at
Next Step Broadcasting!*

Get into the Christmas Spirit

*by sponsoring a half hour of Christmas music or
send out a greeting for your business.*



*It's easy and a great way to say
thank you to your customers.*

*Find out how easy and affordable it is by
contacting KDOM today! (507) 831-3908*



Betsy 507-276-1270

Jessica 507-220-0261

Sam 507-822-0179

41132 180th Street West Springfield, MN

www.pinkswancreations.com

Chasing dreams & making people beautiful

We offer hair, waxing, & massage services as well as lash extensions & airbrush spray tans

To Book Online @

<https://square.site/book/OWW6JJWQ0C4GP/pink-swan-boutique-beauty-parlor-springfield-mn>



Close at 5pm on Christmas Eve
Closed Christmas Day



BROWN



Est. 2021

TREE SERVICE

- ♦ Tree Removal
- ♦ Tree Trimming
- ♦ Stump Removal
- ♦ Storm Clean Up
- ♦ Free Estimates
- ♦ 24 Hour Emergency Service
- ♦ 15 Years Experience
- ♦ Fully Licensed & Insured

Brown Tree Service, LLC

Douglas Brown 507-220-0672

Brigette Brown 507-220-0243

browntreeservicemn@yahoo.com

Springfield, MN

Exciting Job Opportunities. Pass it On.



The Brown County Historical Society is Now Hiring

Both positions are part time:

- **Program Coordinator**
- **Visitor Services Coordinator**

Position descriptions can be found on the BCHS website: browncountyhistorymn.org (under "Visit" - "Job Opportunities") or on the website *indeed.com*



FRIDAY ~ SATURDAY
NOVEMBER 25 ~ 26



20% OFF

ALL CHRISTMAS

MERCHANDISE

EXCLUDING WILLOW TREE & FRESH

Springfield Floral

1 E CENTRAL STREET,
SPRINGFIELD, MN 56087

507-723-6764

MVTV

wireless
internet provider

powered by
Plume HomePass®

'Serving customers beyond connectivity'

**MVTV Wireless Internet would like to wish our Members,
Board Members, Employees and their Families a
Joyous Holiday Season!**



- ✓ Robust, fully-supported network
- ✓ Local technical & customer support
- ✓ Community service built on integrity
- ✓ Referral Program
- ✓ New! Worry Free Connectivity with MVTV's Managed Wifi Service

Full-Service Broadband Internet Provider

320-564-4807



www.mvtvwireless.com



OPEN: M-F 7:00AM-4:00PM

SATURDAY & SUNDAY CHECK SOCIAL MEDIA



24 N Cass Ave, Springfield, MN 56087

Follow us on social media:



@Theloftnutrition



@theloftnutrition56087



Kaligulden.goherbalife.com/en-us



507-766-0040



- **Drafting & Design Service**
- **Consultation Service**

New Homes
Pole Buildings
Building Additions
Remodel/Renovations
Kitchen Layouts
Decks
Garages

CR Consulting & Design
Construction Consultation & Design.

New Home Plans



Slab on Grade



2-Story



Elevations Foundation Plan
Floor Plans Wall Sections
Site Plan Detail Pages

Pole Buildings



Machinery Storage Options



Shop House and Shop Office Options



Post Layouts, Wall Sections & Detail Drawings

Kitchen Designs



3D Renderings



Floorplan Layouts

Fee Schedule

- Upfront pricing information based on type/size of project.
- Start/Stop at any point in the Process.
- Full-size print copies provided
- PDF Digital files provided for distribution.

Remodeling



Site Visit to map out existing floorplan

Concept drawings with options



Decks

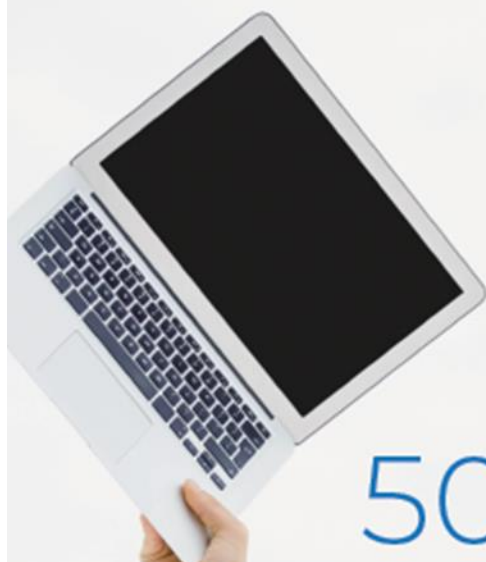


Our Office is located on Central Street in Springfield. Parking and customer entrance is around the rear of the home, accessed through the alley. We are open by Appointment Only.



CR Consulting & Design
520 West Central Street
Springfield, MN 56087
Phone: 507.276.9611
E-mail: crothmeier@gmail.com





ARG!
GET TECH HELP AT
507-276-5059

TECH|UNLIMITED

YOUR ONE STOP FOR TECHNOLOGY NEEDS

techunlimitedllc.com



Jack Larson Seeds

**Your local independent
Dekalb - Asgrow Dealer**

*We have the staff and equipment
to service all of your seed needs year round!*

Agronomic Support and Field Scouting
Seed Delivery to your farm or field
CRP & Cover Crop Seed and Drilling
Field View™ Installation and Support

**Custom
Soybean
Drilling
and Air Seeding**

Custom Hydro-Seeding
Monitor Calibrations
Planter Prescriptions
Drone Services



507-723-4302

Larson Crop Insurance

**Contact us with any
Crop Insurance Questions**

Laurie Hoffbeck's cell ~ 507-829-8367

Jack's cell ~ 507-829-5189

Johnny's cell ~ 612-207-6542

Steve's cell ~ 507-828-3164

Evan's cell ~ 507-822-3545

Colin's cell ~ 507-430-0558

**Grow
WITH Us**



Available 24-7

www.jacklarsonseeds.com



Massage & Bodywork

Deb Wahl, CMT

507-626-0567

Call or Text for an Appointment

debs.wahl@yahoo.com

ED's Repair

SPRINGFIELD, MN
723-5985

WE'VE MOVED!

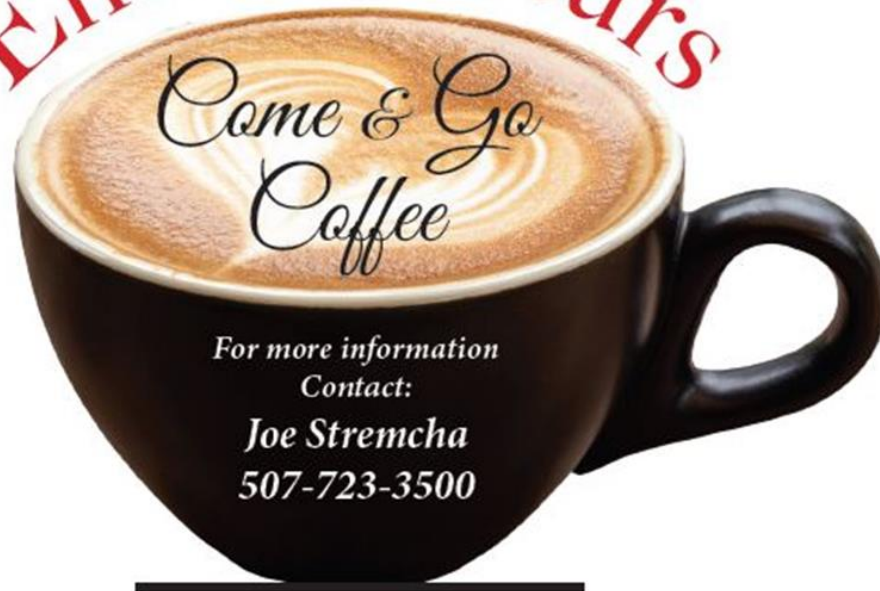


**HAS A NEW
ADDRESS!**



104 N MARSHALL AVE
SPRINGFIELD MN 56087
PHONE: (507) 227-8767

Entrepreneurs



Every 4th Wednesday of the month
7:30 a.m. – 10:30 a.m.
Springfield Area
Community Center

Kickstart Springfield Come and Go Coffee Group meets on the fourth Wednesday of each month. Business owners and entrepreneurs are invited to join. Please come and enjoy a cup of coffee and meet with fellow entrepreneurs and business owners.

This will be an excellent opportunity to network, meet with advisors and have 1-on-1 consultations with peers and members of the Kickstart Springfield Board.

The core focus of Kickstart Springfield is to create a vibrant economy by finding and supporting start-ups and local entrepreneurs including business startups to existing businesses that want to grow.



Cancelled For December

Celebrate the holidays with a new phone!

Get half price off a new phone from December 19 - January 1*.

Get started today! Call 507.723.4211 or visit nuverawireless.com

Limited time offers and subject to change without notice. Some restrictions may apply. *New 4G HD or 5G customers receive up to \$550 credit on purchase of any new 4G HD/5G smartphone. Cannot be combined with other promotions or used on plans of 300 minutes or lower. Must finance for at least 30 months. Other exclusions may apply.

Nuvera
Wireless



Up to

\$550

off a phone!



Christmas Tree Walk at the Springfield Museum

The Springfield Historical Society Board invites everyone to visit the museum during the upcoming holiday season to view the more than two dozen decorated Christmas trees and other holiday displays.

This season's trees include those decorated by the American Legion Auxiliary, Rotary Club, Lions Club, Springfield Area Nativity Theatre Ass'n (SANTA), Memory Makers Quilt Club, Garden Study Club, St. Raphael Little Panthers, Girl Scouts, St. John Circle of Care, Allina Health, St. John Lutheran Church, St. Paul Lutheran Church, United Methodist Church, Zion Lutheran Church, Springfield Advance-Press, Farmers & Merchants Bank, Red Rock Bank, and SouthPoint Financial Credit Union. Also included in the display are Danish, Irish, Frosty the Snowman, Santa Claus, Old-Fashion, Patriotic, and Tractor themed trees plus an Origami tree decorated by Mary Hesse, who made the origami decorations.

Open hours at the museum from Friday, November 25th, through Friday, December 30th, will be Wednesdays and Fridays from 2 to 4 p.m., and Saturdays from 10 to noon (closed Saturday, December 24th). If these hours are not convenient, please call Cheryl Diede 723-6121, Marge Renner 723-9987, or Peggy Larson 507-920-6701 for a special appointment.

There is no admission charge, but visitors are invited to vote for their favorite trees at 25 cents per vote. All donations are appreciated and will be used to further work of the Springfield Historical Society.



Happy Holidays!

Good Neighbor Thrift
Accepting Donations
Reach us at 723-5778 or Follow
us on FB
Good Neighbor Thrift MN

SPRINGFIELD GOLF CLUB

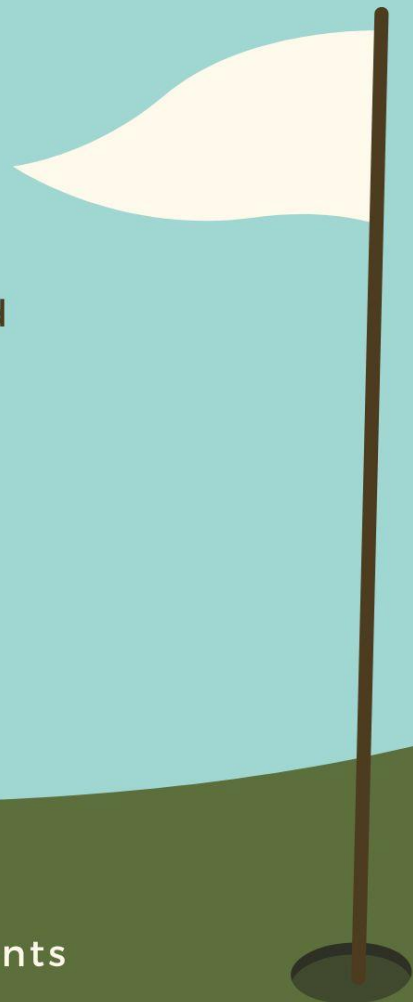
OPEN TO THE PUBLIC

The clubhouse is OPEN year round
Every Thursday & Friday @5pm

651 S O'Connell Street
Springfield MN, 56087

507-723-5888

Follow us on Facebook
Contact us for your upcoming events



CITY OF SPRINGFIELD EMERGENCY ALERTING AND NOTIFICATION SYSTEM



Dear Residents,

The *City of Springfield* wants you and your family to be safe and informed during emergencies in our area. These may include public safety threats, dangerous weather, and traffic advisories. Information is key, and we strongly encourage you to sign up to receive text message alerts directly from the City of Springfield.

Registering for alerts is easy — simply text the Keyword below to **888777** and you'll be informed and instructed when necessary.

- **56087** (Springfield Community & Emergency Alerts)
- **CENTRAL2020** (Weekly Central Street Project Updates)
- **SNOWFALL** (Snow Removal Updates)

**TEXT THE KEYWORD TO 888777
TO SIGN UP FOR ALERTS**



powered



Springfield Chamber of Commerce

33 South Cass Avenue *PO Box 134

Springfield, MN 56087

507-723-3508

spfdchamber@newulmel.net

www.springfieldmnchamber.org

Denise Gicker

Executive Director

Monday- Friday 9 am – 1 pm



Chamber Chatter is a publication of the
Springfield Chamber of Commerce.
It is published monthly to keep members
and friends informed on events, activities,
and programs in and around the community.

Mission Statement – The mission of the Springfield Area Chamber of Commerce/CVB is to strengthen the business community and take a leadership role in promoting economic growth in a spirit of cooperation and team work.

Vision Statement – Promote economic growth through the recruitment and retention of quality businesses and industries that will contribute to the overall economic health of the community. Provide the membership networking opportunities, referrals, internet promotion and other membership services to promote and enhance their business. Develop and nurture relationships with local government and other community sectors to help facilitate the needs and interests of the business community and enhance the overall quality of life within the community.

Chamber of Commerce General Board of Directors 2022

President- Mike Granda- Farmers & Merchants State Bank

Vice President- Wendy Krier- Springfield Advance-Press

Dan Anderson- Springfield Market

Chrissy Boerboom- St. John's Circle of Care

Amanda Frank – Reiner Real Estate

Joe Stremcha - City of Springfield Representative

Deb Miesen- Miesen's Color Center

Kayla Berberich- SouthPoint Financial Credit Union

Deb Wahl- Massage & Bodywork by Deb Wahl

