



DRS. AKRE & CLARK
FAMILY EYE CARE

BUY ONE GET ONE

50%
OFF OFF

50% Off any additional frame and lenses. Cannot be combined with any other insurance plans or packages. See an Optician for details.

1715 S. Broadway
New Ulm, MN 56073
507-354-8531

623 W. Rock St
Springfield, MN 56087
507-723-2020

1111 2nd St. NE
Waseca, MN 56093
507-835-2020

+ Meet our specialty care team

Meet the specialty care providers who regularly see patients at Allina Health Springfield Clinic.



Rebecca Bailey, PA-C
UROLOGY

Available: Mondays



Keary Johnson, MD
OB/GYN

Available: Wednesdays



Corinne (Cori) Jordan, MD
GENERAL SURGERY

Available: Thursdays



Barry Bohlen, MD
ORTHOPEDICS

Available: Thursdays



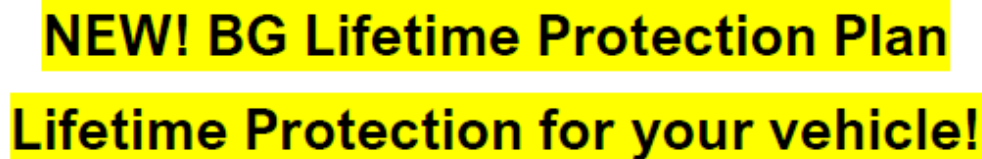
Teleheart
CARDIOLOGY

Minneapolis Heart Institute
Available: 1st and 3rd Thursday

APPOINTMENTS
LEARN MORE

507-723-6201
allinahealth.org/springfield

Allina Health 

[illegible]



UNWIND THIS HOLIDAY SEASON

**Earn 1.5% cash back with our Visa
Rewards Credit Card and enjoy the
holidays without the financial hangups.
Apply at <https://bit.ly/SPFCUcashbackCC>**



*APR-Annual Percentage Rate. Introductory rates as low as 0% APR applies for 6 months on balance transfers. Then, a low standard variable rate applies ranging from 12.50% – 18.00% APR. Interest rates are subject to change based on the type of loan, the collateral, loan to value, borrower's credit history, account relationship, and automatic payments. Rates disclosed are the lowest rates available at SouthPoint FCU. Other conditions may apply. Foreign Transaction Fee – 1.00% of each multiple currency transaction in U.S. dollars. 0.80% of each single currency transaction in U.S. dollars.

www.southpointfinancial.com | 877-794-6712 | Federally Insured by NCUA | Equal Housing Opportunity



'Serving customers beyond connectivity'



- ✓ Robust, fully-supported network
- ✓ Local technical & customer support
- ✓ Community service built on integrity
- ✓ Referral Program
- ✓ Worry Free Connectivity with MVTV's Managed Wifi Service

"MVTV Wireless Internet, your local broadband internet provider recently reached a milestone of 7,000 members! Our in-house team of customer support, field technicians, network operations center, tower crew and marketing department would like to thank our members for their support over the past 23 years.

If you are not yet a member and would like to be, please give us a call at 320.564.4807 or visit mvtvwireless.com."



Full-Service Broadband Internet Provider

320-564-4807 ★ www.mvtvwireless.com



Betsy 507-276-1270

Jessica 507-220-0261

Sam 507-822-0179

41132 180th Street West Springfield, MN

www.pinkswancreations.com

Chasing dreams & making people beautiful

We offer hair, waxing, & massage services as well as lash extensions & airbrush spray tans

To Book Online @

<https://square.site/book/OWW6JJWQ0C4GP/pink-swan-boutique-beauty-parlor-springfield-mn>

Shop Black Friday with Nuvera Wireless!

New customers: Get half price off a new phone from November 21-28¹.

Current customers: Get up to \$400 off a new phone²!

Get started today! Call 844.476.5523 or visit nuverawireless.com

Limited time offers and subject to change without notice. Some restrictions may apply. ¹New 4G HD or 5G customers receive up to \$550 credit on purchase of any new 4G HD/5G smartphone. Cannot be combined with other promotions or used on plans of 300 minutes or lower. Must finance for at least 30 months. Other exclusions may apply. ²This promo is only eligible for current customers upgrading to a new 4G HD/5G device. Customer must finance for 30 months. Cannot be combined with other promotions nor used on Eco plans of 300 minutes or lower.

Nuvera
Wireless 



Up to
\$550
off a phone!



Number of Employees:
145

Business Owners:
St. John's Circle of Care is a not for profit corporation.

How long have you been in business:
121 years

St. John's Circle of Care

What products or services do you provide?

St. John's Circle of Care is a large senior campus with the ability to care for all needs a person may have while they are aging. We have a variety of housing options and services available: subsidized rent at Senior apartments, Assisted Living, Dementia care, Skilled Nursing care and short-term rehabilitation. In addition, St. John's offers the GrandKids and V.I.K. child day care and Kindergarten Readiness programs, which allow children and seniors to interact each and every day.

Why is this a great place to work?

St. John's Circle of Care is not only a caring community, but also an energetic, diverse and encouraging workplace!

We have a job to fit everyone's skills and abilities in various departments throughout the campus, including nursing, dietary, housekeeping, laundry, therapeutic recreation, plant operations, child daycare, care attendants and business administration.

St. John's is a great place to work because we care for people who need us and depend on us.

What separates you from others?

St. John's separates from the others because we have a continuum of care serving people of all ages — 6 weeks to 102 years old. All located on the same campus. Intergenerational programming is a huge asset to our community.

Each day children in our care interact with the residents of St. John's Circle of Care. Intergenerational programs bring extra joy to residents and children alike.

We are also fortunate to have a Foundation that exists to benefit the residents, tenants and employees of St. John's Circle of Care.

It is with great pride that the Foundation works to support the mission of St. John's... To enable all who are within St. John's Circle of Care the ability to Thrive Together!

If you offer benefits, what are some you offer?

St. John's has competitive wages and benefits including PTO and sick pay for full time employees (30+ hours/week). Eligible employees may participate in health/HSA, dental and vision insurance, Dependent Care Flex Claim Reimbursement, 403b pension including company match.

An innovative new benefit we provide to our employees is called Early Wage Access Program. An employee is able to have access to part of their wages prior to payday, up to 50% of their net earnings!

What are you most proud of?

The care we provide the ones we serve is top notch. Staff are honored to be able to serve the ones that have taken care of us. We pride ourselves to be able to help the ones that have helped us.

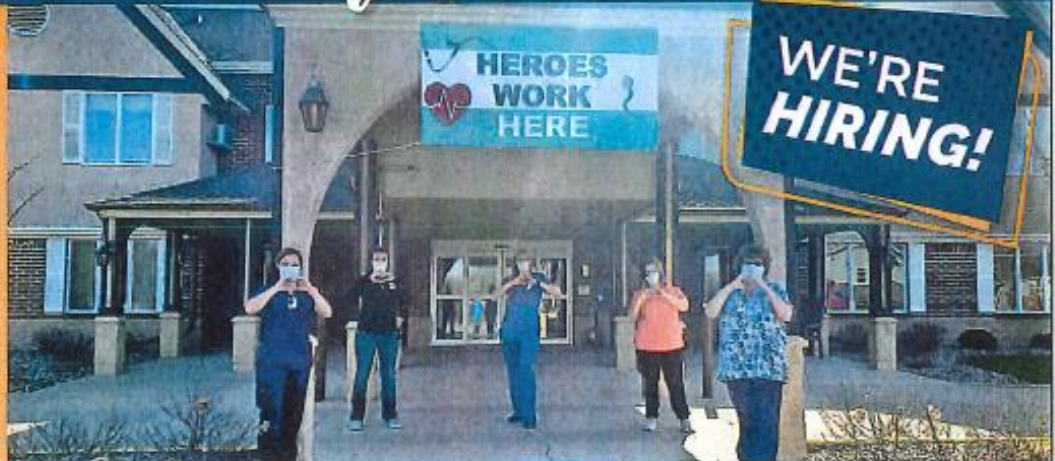
join our team of SUPER HEROES

If you are a caring individual and interested in becoming employed by St. John's Circle of Care,

apply online—
sjlhome.com/employment/

OR pick up an application at—

St. John's Lutheran Home in Springfield



We have a job to fit everyone's skills and abilities in various departments throughout our campus at St. John Lutheran Home and The Maples.



**ST. JOHN'S
CIRCLE OF CARE**
A TRADITION... FOR ALL AGES

507-723-3200 | Springfield
www.sjlhome.com



We have a job to fit everyone's skills and abilities in various departments throughout our campus. If you are a caring individual and interested in becoming part of our team, apply online:

sjhome.com/employment/

Or pick up an application at St. John Lutheran Home.

Live life on your own terms.

We make day to day living easier by offering the right amount of services and care at the right time, and around the clock staffing for any unanticipated needs.

Personalized Living

We take time to know your life stories, your likes and dislikes, your family, friends and your dreams.

The Maples at St. John is located on the east side of Springfield, MN on the St. John Circle of Care campus.

Schedule a Tour!

chrissyb@sjlhome.com or 507-723-3250

The Maples 
AT ST. JOHN

507-723-3250

301 S. County Road 5 • Springfield, MN

www.sjlhome.com



Cottonwood Ridge Apartments
712 East Cottonwood Street
Springfield, MN 56087

Call for a Tour: [\(507\) 723-4500](tel:5077234500)



Independent Senior Living, Affordably Priced.

Cottonwood Ridge Senior Apartments offers a warm, comfortable, clean setting, privacy and a chance to socialize with other friendly tenants in beautiful common areas. Sit back, relax and enjoy your freedom at Cottonwood!

Cottonwood offers private apartments for people age 62 or over. Tenants pay rent of 30% of their adjusted gross income after medical expenses. Rental assistance is provided by the Department of Housing and Urban Development (HUD) for eligible seniors. Heat is included in rent.

Special Features Include:

- 23 one-bedroom private apartments
- Controlled access entry system
- In-house pull-cord alarm system
- Library
- Live in caretaker
- Laundry Facilities
- Whirlpool Bath
- Access to cable TV
- Parking lot space & Car Plug-in
- Tenant sponsored social programs
- Individual Storage Units
- TV lounge
- Common area dining room/kitchen
- Outdoor Patio
- Small pets welcome
- Gardening and walking path
- Seated shower option
- Exercise Equipment



Join us for virtual event—Business Continuation Planning

Hear from Steve Parrish, an expert on business owner succession planning, and learn about timely strategies to help business owners make informed decisions about:

- Having a plan for continuing your business.
- Selecting a successor.
- Determining your business's value.
- Having a buy-sell agreement and identifying funding sources.



Event details

Tuesday, November 1 at 6 p.m.
Thursday, November 3 at 11 a.m.



Reserve your place today
Scan the QR code to register

507-723-5454 • thrivent.com/redwood

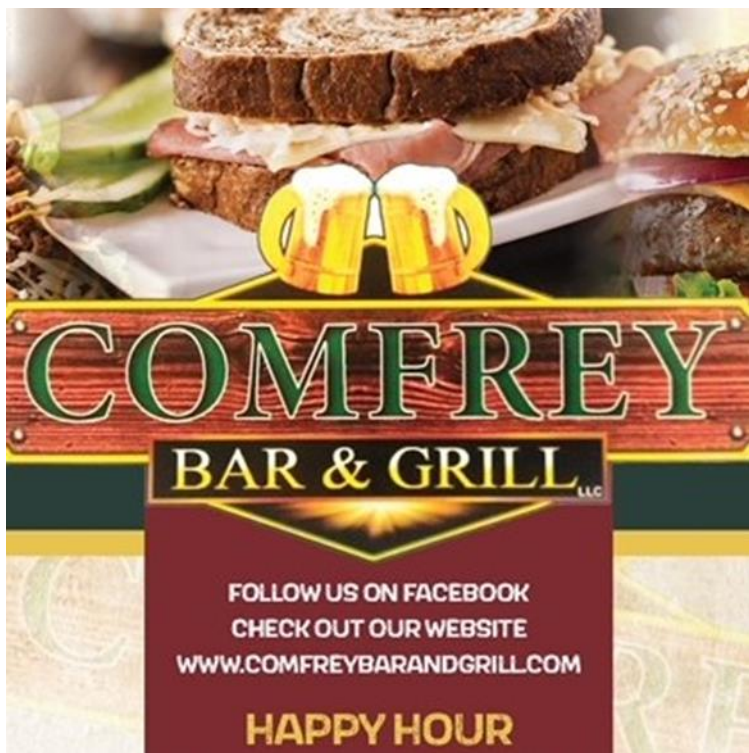
No products will be sold.

Steve Parrish is not affiliated with or endorsed by Thrivent. The views expressed in this presentation by Steve Parrish are his own and not necessarily those of Thrivent or its affiliates.

Thrivent and its financial advisors and professionals do not provide legal, accounting or tax advice. Consult your attorney or tax professional.

Securities and investment advisory services offered through Thrivent Investment Management Inc., a registered investment adviser, member FINRA and SIPC, and a subsidiary of Thrivent, the marketing name for Thrivent Financial for Lutherans. Registered representative of Thrivent Investment Management Inc. Advisory services available through investment adviser representatives only. [Thrivent.com/disclosures](https://thrivent.com/disclosures).

Insurance products, securities and investment advisory services are provided by appropriately appointed and licensed financial advisors and professionals. Only individuals who are financial advisors are credentialed to provide investment advisory services. Visit Thrivent.com or 4986291.1



Thanksgiving - Closed

Close at 5pm on Christmas Eve

Closed Christmas Day

BROWN



Est.

2021

TREE SERVICE

- ♦ Tree Removal
- ♦ Tree Trimming
- ♦ Stump Removal
- ♦ Storm Clean Up
- ♦ Free Estimates
- ♦ 24 Hour Emergency Service
- ♦ 15 Years Experience
- ♦ Fully Licensed & Insured

Brown Tree Service, LLC

Douglas Brown 507-220-0672

Brigette Brown 507-220-0243

browntreeservicemn@yahoo.com

Springfield, MN



- **Drafting & Design Service**
- **Consultation Service**

New Homes
Pole Buildings
Building Additions
Remodel/Renovations
Kitchen Layouts
Decks
Garages

CR Consulting & Design
Construction Consultation & Design.

New Home Plans



Slab on Grade



2-Story



Elevations Foundation Plan
Floor Plans Wall Sections
Site Plan Detail Pages

Pole Buildings



Machinery Storage Options



Shop House and Shop Office Options



Post Layouts, Wall Sections & Detail Drawings

Kitchen Designs



3D Renderings



Floorplan Layouts

Fee Schedule

- Upfront pricing information based on type/size of project.
- Start/Stop at any point in the Process.
- Full-size print copies provided
- PDF Digital files provided for distribution.

Remodeling



Site Visit to map out existing floorplan

Concept drawings with options



Decks

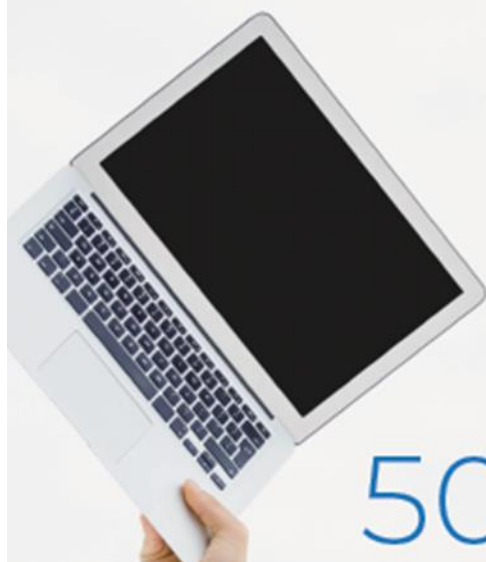


Our Office is located on Central Street in Springfield. Parking and customer entrance is around the rear of the home, accessed through the alley. We are open by Appointment Only.



CR Consulting & Design
520 West Central Street
Springfield, MN 56087
Phone: 507.276.9611
E-mail: crothmeier@gmail.com





ARG!
GET TECH HELP AT
507-276-5059

TECH|UNLIMITED

YOUR ONE STOP FOR TECHNOLOGY NEEDS

techunlimitedllc.com



WE'VE MOVED!



**HAS A NEW
ADDRESS!**



104 N MARSHALL AVE
SPRINGFIELD MN 56087
PHONE: (507) 227-8767



Together, we're making a difference to people in Brown County. Run a United Way campaign at your business this year.

United Way of the
Brown County Area



#GameChangers



BROWN COUNTY HISTORICAL SOCIETY

2 North Broadway, New Ulm, MN 56073

PRESS RELEASE

For Immediate Release

Date: October 31, 2022

Brown County Historical Society, 2 North Broadway, New Ulm, MN 56073

Contact: Kathleen Backer, director@browncountyhistorymn.org – 507-233-2618

The BCHS to hold its 2022 Annual Meeting Joel Botten will present “Hanska-A Scandinavian Saga”

The Brown County Historical Society (BCHS) will hold its 92nd Annual Meeting on Thursday, November 10, 2022 at the Sleepy Eye Event Center, Sleepy Eye, MN. The night will begin with socializing at 6:00pm, followed by a dessert buffet (with a fresh fruit option) at 6:30pm. The business meeting will begin at 7:00pm and the program will follow immediately after the business meeting.

Joel Botten, retired educator and historian, will present: "Hanska - A Scandinavian Saga". Botten will examine the beginnings of the village of Hanska and the history and evolution of the southeast townships of Brown County: including Lake Hanska and Linden. His presentation will include images of unique sites and events of the townships.

The event is open to the public. Reservations are required in advance. Reservations can be made at the Brown County Museum until the deadline Friday, November 4th. For more information, call the BCHS at 233-2621 or email education@browncountyhistorymn.org. Check out the BCHS on Facebook and on the website: www.browncountyhistorymn.org

Where: Sleepy Eye Event Center

When: Thursday, November 10

Time: 6:00pm Social, 6:30pm Dessert Buffet, 7:00pm Program

Cost: \$20.00

Contact Info: 507-233-2621 or email education@browncountyhistorymn.org

#





Clements Lumber in Morgan is looking for delivery person to join our team. Full time position. Must have a clean valid drivers license, the ability to drive a truck and trailer along with a forklift. Job duties include: loading and unloading trucks, delivering material, maintaining inventory, appearance and overall upkeep of the yard. Medical benefits, retirement plan, and paid vacation offered. Pick up an application at any one of our Clements locations or via email

Dan- danhillesheim@clementsllumber.com

(507)723-2230

Mike- mikerothmeier@clementsllumber.com

(507)877-2026

Clements Lumber is a Valspar Dealer.
For all your paint needs!



Entrepreneurs

*Come & Go
Coffee*

*For more information
Contact:*

Joe Stremcha
507-723-3500

Every 4th Wednesday of the month

7:30 a.m. – 10:30 a.m.

**Springfield Area
Community Center**

Kickstart Springfield Come and Go Coffee Group meets on the fourth Wednesday of each month. Business owners and entrepreneurs are invited to join. Please come and enjoy a cup of coffee and meet with fellow entrepreneurs and business owners.

This will be an excellent opportunity to network, meet with advisors and have 1-on-1 consultations with peers and members of the Kickstart Springfield Board.

The core focus of Kickstart Springfield is to create a vibrant economy by finding and supporting start-ups and local entrepreneurs including business startups to existing businesses that want to grow.



**Kickstart
Springfield**

**ENTREPRENEUR
HUB**



A Nu You Massage Therapy

MASSAGE & WELLNESS



Offering 60 & 90 min Reflexology Sessions

Springfield, MN
www.anuyoumassagetherapy.com
507-723-9121

A NU YOU MASSAGE THERAPY

Saturday
Appointments
Available

Call or
Book Online
anuyoumassagetherapy.com



ED's Repair

SPRINGFIELD, MN
723-5985

Jack Larson Seeds

**Your local independent
Dekalb - Asgrow Dealer**

*We have the staff and equipment
to service all of your seed needs year round!*

Agronomic Support and Field Scouting
Seed Delivery to your farm or field
CRP & Cover Crop Seed and Drilling
Field View™ Installation and Support

**Custom
Soybean
Drilling
and Air Seeding**

Custom Hydro-Seeding
Monitor Calibrations
Planter Prescriptions
Drone Services



507-723-4302

Larson Crop Insurance

**Contact us with any
Crop Insurance Questions**

Laurie Hoffbeck's cell ~ 507-829-8367

Jack's cell ~ 507-829-5189

Johnny's cell ~ 612-207-6542

Steve's cell ~ 507-828-3164

Evan's cell ~ 507-822-3545

Colin's cell ~ 507-430-0558

**Grow
WITH Us**



Available 24-7

www.jacklarsonseeds.com



Massage & Bodywork

Deb Wahl, CMT

507-626-0567

Call or Text for an Appointment

debs.wahl@yahoo.com

CITY OF SPRINGFIELD EMERGENCY ALERTING AND NOTIFICATION SYSTEM



Dear Residents,

The *City of Springfield* wants you and your family to be safe and informed during emergencies in our area. These may include public safety threats, dangerous weather, and traffic advisories. Information is key, and we strongly encourage you to sign up to receive text message alerts directly from the City of Springfield.

Registering for alerts is easy — simply text the Keyword below to **888777** and you'll be informed and instructed when necessary.

- **56087** (Springfield Community & Emergency Alerts)
- **CENTRAL2020** (Weekly Central Street Project Updates)
- **SNOWFALL** (Snow Removal Updates)

**TEXT THE KEYWORD TO 888777
TO SIGN UP FOR ALERTS**



powered



Springfield Chamber of Commerce

33 South Cass Avenue *PO Box 134

Springfield, MN 56087

507-723-3508

spfdchamber@newulmel.net

www.springfieldmnchamber.org

Denise Gicker

Executive Director

Monday- Friday 9 am – 1 pm



Chamber Chatter is a publication of the
Springfield Chamber of Commerce.
It is published monthly to keep members
and friends informed on events, activities,
and programs in and around the community.

Mission Statement – The mission of the Springfield Area Chamber of Commerce/CVB is to strengthen the business community and take a leadership role in promoting economic growth in a spirit of cooperation and team work.

Vision Statement – Promote economic growth through the recruitment and retention of quality businesses and industries that will contribute to the overall economic health of the community. Provide the membership networking opportunities, referrals, internet promotion and other membership services to promote and enhance their business. Develop and nurture relationships with local government and other community sectors to help facilitate the needs and interests of the business community and enhance the overall quality of life within the community.

Chamber of Commerce General Board of Directors 2022

President- Mike Granda- Farmers & Merchants State Bank

Vice President- Wendy Krier- Springfield Advance-Press

Dan Anderson- Springfield Market

Chrissy Boerboom- St. John's Circle of Care

Amanda Frank – Reiner Real Estate

- City of Springfield Representative

Deb Miesen- Miesen's Color Center

Kayla Berberich- SouthPoint Financial Credit Union

Deb Wahl- Massage & Bodywork by Deb Wahl