

# *CHAMBER CHATTER*



## *October 2022*

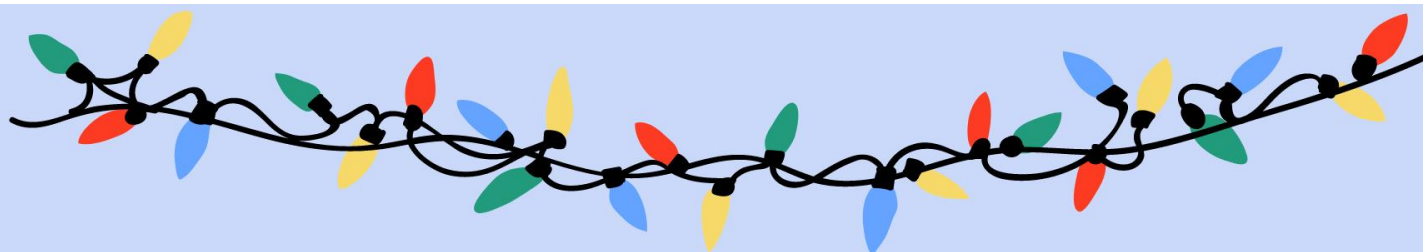
**October 14<sup>th</sup> – Chamber Retail Meeting**

**November 9<sup>th</sup> – Holiday Open House**

**November 9<sup>th</sup> through December 14<sup>th</sup> – Jingle Bell Ticket Promotion**

\*Please share the Chamber Chatter Newsletter with your employees. The newsletter is also now available on the Chamber website at <https://springfieldmnchamber.org/chamber-chatter/>. It will also be posted on Facebook when the current newsletter is available on the Chamber Website.

If there are additional email addresses you would like me to add to make sure our newsletter is getting to all who are interested, please let me know by emailing me at [spfdchamber@newulmtel.net](mailto:spfdchamber@newulmtel.net) and I would be happy to add them to the email list.



# HOLIDAY LIGHTING CONTEST

*Do you think your house has the best Holiday light display?*

**The Springfield Chamber has nominated the residents of The Maples to be the judge of that!**

**Judging will take place on Monday, December 12th  
Starting at 6:30 pm**

**Please make sure  
your lights are  
turned on the  
evening of  
December 12th**

**\*Eligible homes  
must be within  
city limits**



**1st place prize:  
\$50 Chamber Bucks**



**2nd place prize:  
\$30 Chamber Bucks**



**3rd place prize:  
\$20 Chamber Bucks**







**\* Note**  
**Retail Meeting has been moved to**  
**Friday, October 14<sup>th</sup>**

# FLU SEASON IS HERE

## Protect yourself and loved ones from the flu

Getting a flu shot is the best way to help protect yourself, and everyone around you, from getting the most common types of the flu virus.

### Flu Shot Clinics

|                              |   |
|------------------------------|---|
| <b>Tuesday, September 27</b> | <b>7AM to 11AM</b> (Springfield Clinic) |
| <b>Tuesday, September 27</b> | <b>3PM to 5PM</b> (Springfield Clinic)  |
| <b>Saturday, October 1</b>   | <b>8AM to 12PM</b> (Springfield Clinic) |
| <b>Thursday, October 6</b>   | <b>3PM to 6PM</b> (Lamberton Clinic)    |
| <b>Wednesday, October 19</b> | <b>1PM to 5PM</b> (Springfield Clinic)  |
| <b>Thursday, October 20</b>  | <b>1PM to 6PM</b> (Lamberton Clinic)    |

**Please call the  
Springfield Clinic  
to make an  
appointment  
507-723-6201**





## Join us for a Worksite Wellness Networking and Training Event

### Ask a Question, Save a Life!



**QPR**  
INSTITUTE

QPR stands for **Q**uestion, **P**ersuade and **R**efers — the three simple steps anyone can learn to help save a life from suicide.

Just as people trained in CPR and the Heimlich Maneuver help save thousands of lives each year, people trained in QPR learn how to recognize the warning signs of a suicide crisis and how to question, persuade and refer someone to help. It is the most widely taught gatekeeper training in the United States that teaches best practices in suicide prevention.

QPR gatekeeper training is intended for community members 18 years and older and professionals including health care workers, first responders, law enforcement, educators, clergy, bankers, lawyers and more!

The 90-minute FREE class includes information about high-risk populations including youth, the elderly and farmers. Learn about suicide warning signs, statistics, myths and local resources.

**Pre-registration is required.**

Class size is limited to 30 participants.

Open to anyone 18 years and older.

Continuing Education Credits available.

### Gatekeeper Training Course

**Thurs. Oct. 13, 2022**

**Time:** 11 a.m. to 1 p.m.

**Location:**

Turner Hall, 102 S. State St.

**Lunch:** Purchase on your own;  
limited menu available

**Registration link:**

<https://tinyurl.com/OctQPRtrain>

## 2B CONTINUED

*Taught by a Certified QPR Gatekeeper Instructor from 2B CONTINUED, a nonprofit based in Southern Minnesota with a mission to increase awareness of suicide prevention, mental health and wellness through advocacy, education and outreach.*

AllinaHealth  
**NEW ULM  
MEDICAL CENTER**  
Occupational Health and Wellness Services

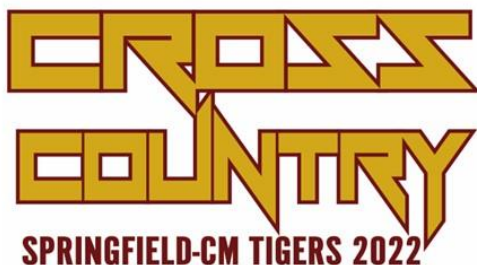


Heart of  
New Ulm   
Supporting a culture of wellness

**ship**  
statewide health  
improvement partnership  
BROWN, NICOLLET, LE SUEUR  
& WASECA COUNTIES

# Show your Support for the Springfield Tigers Fall Sports Teams

[www.deluxeprint.biz](http://www.deluxeprint.biz)



Order online  
or contact me directly



[www.deluxeprint.biz](http://www.deluxeprint.biz)

# Pre-Game Brunch!

The St. John Lutheran Home Auxiliary  
Pancake Fundraiser is here!



**When:** Sunday, October 9, 2022

8 am - 12pm

**Where:** Springfield Golf Course

**What:** Pancakes, Sausage, Fruit and Beverage

Adults: \$10.00

Children 5 - 12: \$5.00

Children 4 and under: Free

\* Proceeds will go to support our local Auxiliary chapter! \*

Don't have time to stay? That's okay!

**Ask us about our to-go option!**

Minnesota Vikings take on the Chicago Bears. Kickoff at 12 Noon!





We have a job to fit everyone's skills and abilities in various departments throughout our campus. If you are a caring individual and interested in becoming part of our team, apply online:

[sjhome.com/employment/](http://sjhome.com/employment/)

Or pick up an application at St. John Lutheran Home.

## *Live life on your own terms.*

We make day to day living easier by offering the right amount of services and care at the right time, and around the clock staffing for any unanticipated needs.

## *Personalized Living*

We take time to know your life stories, your likes and dislikes, your family, friends and your dreams. The Maples at St. John is located on the east side of Springfield, MN on the St. John Circle of Care campus.

## *Schedule a Tour!*

[chrissyb@sjlhome.com](mailto:chrissyb@sjlhome.com) or 507-723-3250

*The Maples*   
AT ST. JOHN

507-723-3250

301 S. County Road 5 • Springfield, MN

[www.sjlhome.com](http://www.sjlhome.com)



# REINER

## REAL ESTATE

Springfield, MN | [www.reinerre.com](http://www.reinerre.com) | Office: 507.723.5233 | Amanda Frank, Broker

### Check out a few of our newest listings!

Visit [www.reinerre.com](http://www.reinerre.com) for a complete listing of our properties



#### 120 S Park Avenue, Springfield - \$119,900

Located close to the school and across the street from the park, this well-maintained, spacious 4 bedroom, 1 3/4 bath home features a large living/dining room with an open staircase and built-in hutch, a 3-season porch with lots of natural light, an eat-in kitchen with a built-in oven and cooktop, great storage space throughout, and a main level bedroom, 3/4 bath, and laundry facilities. The upper level has 3 bedrooms, one with an adjoining room for office space/nursery, and a full bathroom. The back entry off of the kitchen leads out to the large patio area and detached double garage. Great space for garden areas as well.



#### 24 Cass Ave N, Springfield - \$135,000

Located in downtown Springfield, this recently updated commercial building has excellent visibility, easy access, and great income opportunities! The main level features a completely remodeled business space, currently in operation, as well as a rear storage space/garage for additional rental income if desired. The upper level features a remodeled, spacious apartment with a separate access. It has new flooring and paint throughout, and new appliances that stay with the apartment. This property is ideal for an investor looking to continue with current leases in place or a business owner looking for a new place to start-up/relocate.



#### St. John First Addition Lots

**\$22,500/lot**

Located along County Road 5 on the southeast side of Springfield, the spacious St. John First Addition lots offer connections to city water, city sewer, and electricity.

Come build your dream home in this developed neighborhood! Approximately 0.56 acres each. Give us a call for details!

**Inventory is LIMITED and there are many buyers on the hunt for a new home this fall before winter sets in! If you're thinking of selling, now is an ideal time!**

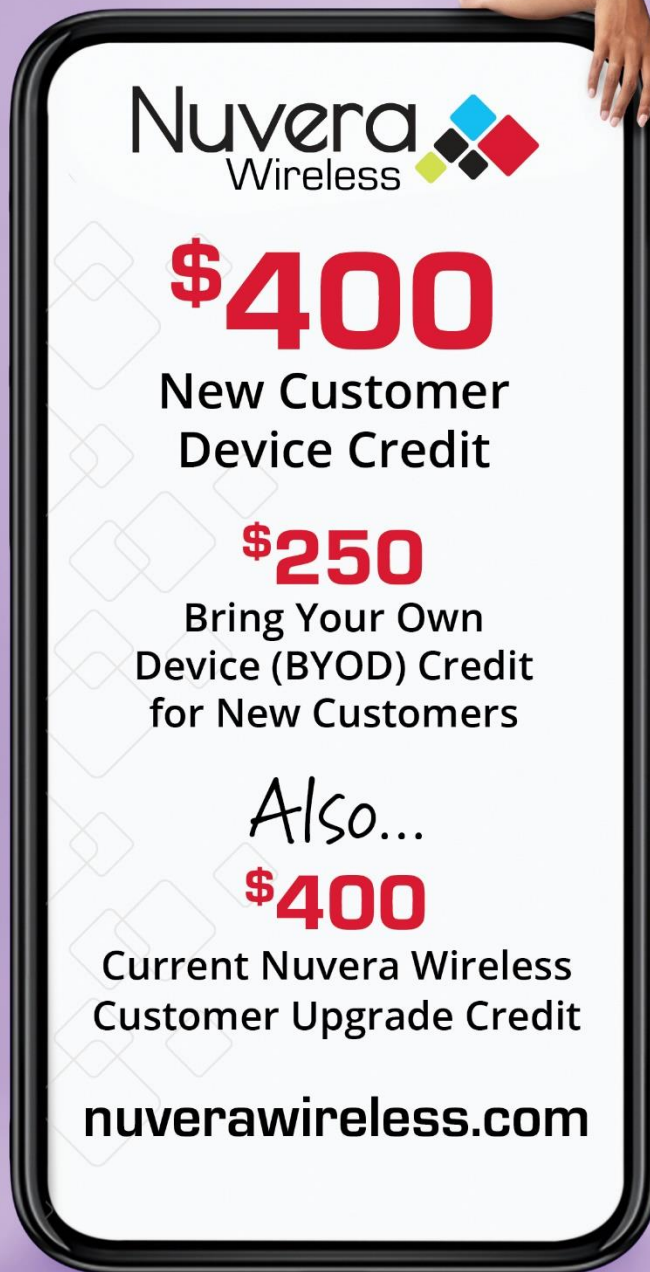
**Give us a call -723-5233 - so we can visit about the next step!**

With Nuvera Wireless, you'll enjoy nationwide coverage on America's #1 network, and the convenience of local customer sales and support!

**Call or stop by today to get started!**

Stop by **22 S. Marshall Ave., Springfield**

Call **507.723.4211** or visit **nuverawireless.com**



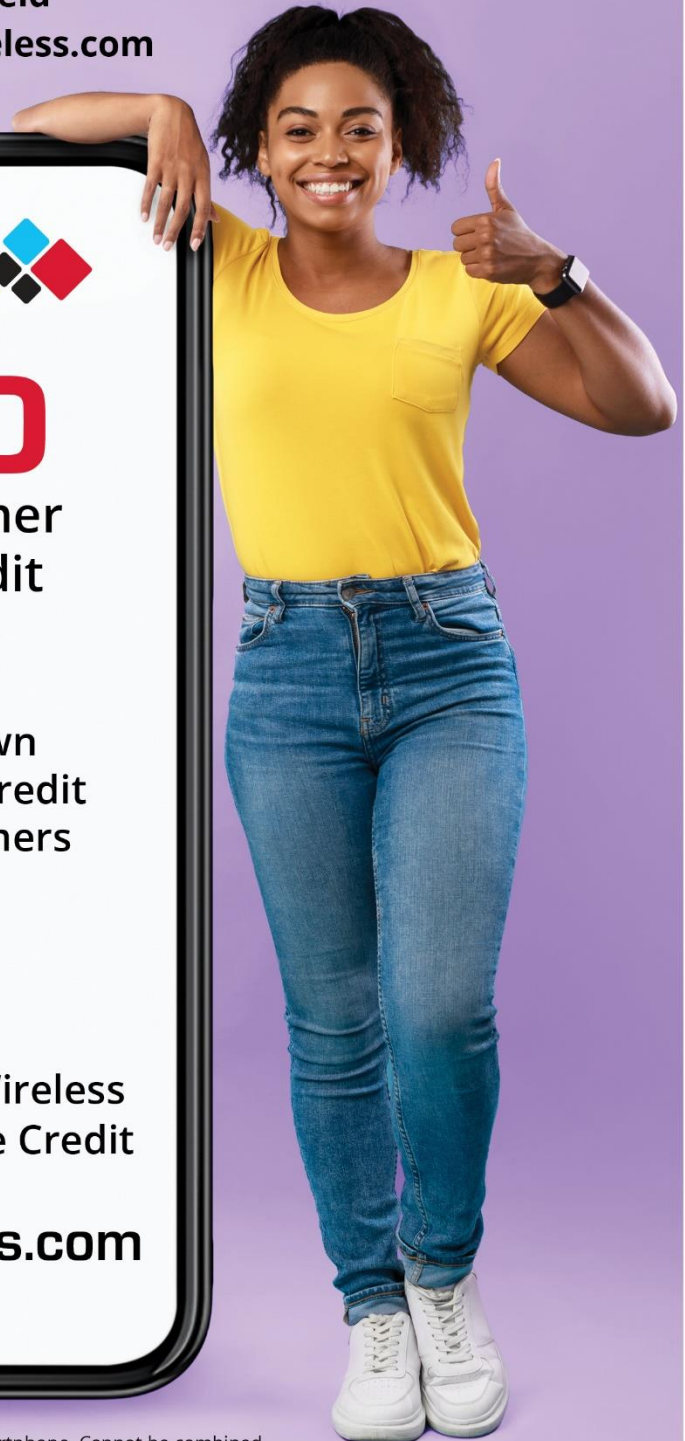
**Nuvera**  
Wireless

**\$400**  
New Customer  
Device Credit

**\$250**  
Bring Your Own  
Device (BYOD) Credit  
for New Customers

*Also...*  
**\$400**  
Current Nuvera Wireless  
Customer Upgrade Credit

**nuverawireless.com**



Limited time offer. Customer gets a \$400 credit on any new 4G/5G smartphone. Cannot be combined with other promotions nor used on plans 300 minutes or lower. Must finance for at least 30 months at the minimum. Other exclusions may apply.



# BROWN COUNTY HISTORICAL SOCIETY

2 North Broadway, New Ulm, MN 56073

## PRESS RELEASE

**For Immediate Release**

**Date: October 3, 2022**

**Brown County Historical Society, 2 North Broadway, New Ulm, MN 56073**

**Contact: Kathleen Backer, [director@browncountyhistorymn.org](mailto:director@browncountyhistorymn.org) – C 507-351-2636 or W 507-233-2618**

### **The VINTAGE Popcorn Wagon will be Open for Business Saturday, October 8**

Get your bag of fresh popcorn at the Brown County Historical Society's vintage popcorn wagon on Saturday, October 8, from 10:00am to 5:00pm during the New Ulm Octoberfest. It will be operating on Center Street in front of the Museum.

The popcorn wagon, a part of local history since 1914, was purchased by the Brown County Historical Society in 2002 and restored to its original appearance. It is now operated by a team of volunteers with all proceeds from the sales of freshly popped corn and soft drinks benefitting the Historical Society's mission and programs. The Brown County Historical Society is located at 2 North Broadway.

For more information call: 507-233-2621 or email: [education@browncountyhistorymn.org](mailto:education@browncountyhistorymn.org)

###



Photo by Carolyn Marti Smith

# Farmers—Our Everyday Heroes!



**F&M**  
BANK

Equal Housing Lender

Springfield | Morgan | [fmb-ebank.com](http://fmb-ebank.com)

Member FDIC

**MVTV** wireless  
internet provider

powered by  
**Plume HomePass®**

*'Serving customers beyond connectivity'*



"MVTV Wireless Internet, your local broadband internet provider recently reached a milestone of 7,000 members! Our in-house team of customer support, field technicians, network operations center, tower crew and marketing department would like to thank our members for their support over the past 23 years. If you are not yet a member and would like to be, please give us a call at 320.564.4807 or visit [mvtvwireless.com](http://mvtvwireless.com)."

- ✓ Robust, fully-supported network
- ✓ Local technical & customer support
- ✓ Community service built on integrity
- ✓ Referral Program
- ✓ Worry Free Connectivity with MVTV's Managed Wifi Service



**Full-Service Broadband Internet Provider**  
**320-564-4807** ★ [www.mvtvwireless.com](http://www.mvtvwireless.com)





# OCTOBER IS CO-OP MONTH

## CO-OP MONTH FUN FACTS

- Minnesota was the first state to declare an official Co-op Month proclamation in 1948.
- Co-op Month has been a nationally recognized celebration since 1964, when U.S. Secretary of Agriculture Orville Freeman, a former Minnesota governor, proclaimed October Co-op Month.
- The first national Co-op Month theme, in 1964, was “Cooperatives: USDA Helps Build a Better America.”
- The U.S. Government sponsored Co-op Month from 1964-1970.
- Every October, the U.S. Department of Agriculture releases its annual Co-op Month proclamation.



[www.southpointfinancial.com](http://www.southpointfinancial.com) | 877-794-6712 | Federally Insured by NCUA | Equal Housing Opportunity



# It's Radio Auction Time! October 18th, 2022

KDOM's semi-annual radio auction gives you a chance to buy items at savings up to 75% off!!

- The auction will be broadcast live on 1580 AM/103.1 FM and 94.3 FM and online at [www.windomradio.com](http://www.windomradio.com)
- Over \$25,000 in merchandise and certificates will be sold!
- Bidding starts at 3:00 PM
- Items list and auction details will be regularly updated at [www.windomradio.com](http://www.windomradio.com)
- Call KDOM to get your bidding number today!

Find out how your business can take advantage of this fun and exciting promotion. Call KDOM Radio today for all the details!

**(507) 831-3908**







**DRS. AKRE & CLARK**  
FAMILY EYE CARE

# Eyetober Fest

# \$99

## FRAME SALE

Cannot be combined with any other insurance plans or packages. Frames exceeding \$299 will be discounted to \$149.  
Valid October 3rd-31st. See an Optician for details.

1715 S. Broadway  
New Ulm, MN 56073  
**507-354-8531**

623 W. Rock St  
Springfield, MN 56087  
**507-723-2020**

1111 2nd St. NE  
Waseca, MN 56093  
**507-835-2020**  
{New Location!!}

**Extra:** Bonus Pumpkin

Draw for an additional:

- Free Frame
- \$10 Off
- \$20 Off
- \$30 Off
- Free Upgrade

# BROWN



Est. 2021

## TREE SERVICE

- ♦ Tree Removal
- ♦ Tree Trimming
- ♦ Stump Removal
- ♦ Storm Clean Up
- ♦ Free Estimates
- ♦ 24 Hour Emergency Service
- ♦ 15 Years Experience
- ♦ Fully Licensed & Insured

## Brown Tree Service, LLC

Douglas Brown 507-220-0672

Brigette Brown 507-220-0243

[browntreeservicemn@yahoo.com](mailto:browntreeservicemn@yahoo.com)

Springfield, MN





- **Drafting & Design Service**
- **Consultation Service**

New Homes  
Pole Buildings  
Building Additions  
Remodel/Renovations  
Kitchen Layouts  
Decks  
Garages

CR Consulting & Design  
Construction Consultation & Design.

## New Home Plans



Slab on Grade



2-Story



Elevations Foundation Plan  
Floor Plans Wall Sections  
Site Plan Detail Pages

## Pole Buildings



Machinery Storage Options



Shop House and Shop Office Options



Post Layouts, Wall Sections & Detail Drawings

## Kitchen Designs



3D Renderings



Floorplan Layouts

## Fee Schedule

- Upfront pricing information based on type/size of project.
- Start/Stop at any point in the Process.
- Full-size print copies provided
- PDF Digital files provided for distribution.

## Remodeling



Site Visit to map out existing floorplan

Concept drawings with options



## Decks



Our Office is located on Central Street in Springfield. Parking and customer entrance is around the rear of the home, accessed through the alley. We are open by Appointment Only.

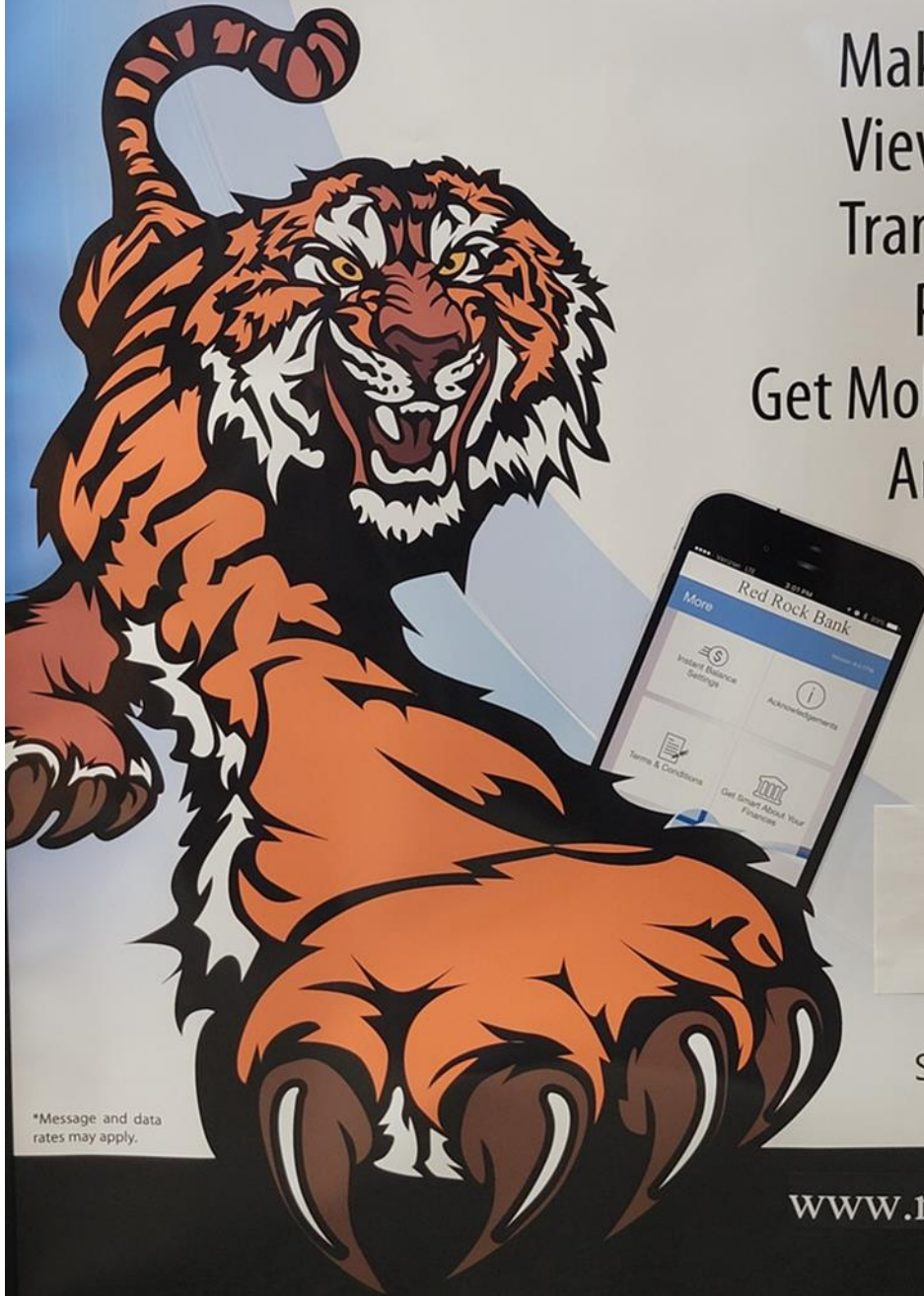


CR Consulting & Design  
520 West Central Street  
Springfield, MN 56087  
Phone: 507.276.9611  
E-mail: crothmeier@gmail.com



# GET YOUR PAWS ON... MOBILE BANKING FROM **RED ROCK BANK!**

Make Deposits  
View Balances  
Transfer Funds  
Pay Bills  
Get Mobile Text Alerts  
And More!



\*Message and data rates may apply.



2 S Marshall Ave  
Springfield, MN 56087  
**507-723-7300**

[www.myredrockbank.com](http://www.myredrockbank.com)

Member FDIC



See us for your advertising and printing needs,  
**and much more!**

- Gift Subscriptions
- Photo Reprints
- Full Color Copies
- Return Address Labels
- Letterhead
- Business Cards
- Post Cards
- Flyers
- Laminating  
2x3" – 11x17"
- Custom stamps
- United States Flags  
3x5' or 4x6'

*Springfield*  
**Advance-Press**

13 S. Marshall Avenue | 507-723-4225

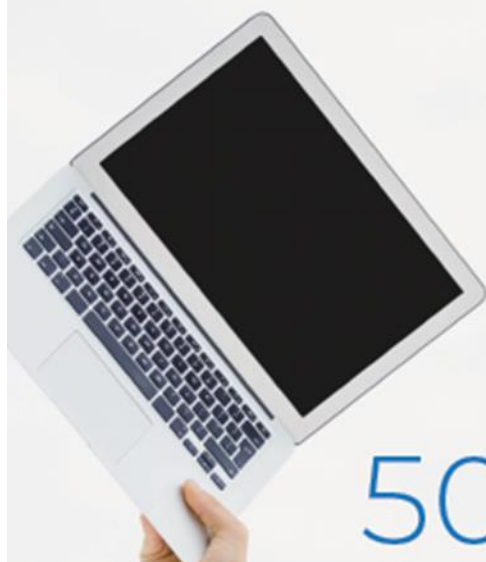
**WE'VE MOVED!**



**HAS A NEW  
ADDRESS!**



104 N MARSHALL AVE  
SPRINGFIELD MN 56087  
PHONE: (507) 227-8767



ARG!  
GET TECH HELP AT  
507-276-5059

**TECH|UNLIMITED**

YOUR ONE STOP FOR TECHNOLOGY NEEDS

[techunlimitedllc.com](http://techunlimitedllc.com)







Together, we're making a difference to people in Brown County. Run a United Way campaign at your business this year.

United Way of the  
Brown County Area



#GameChangers



417 West Rock Street  
Springfield, MN 56087  
507-496-1556



# Ladies NIGHT

4PM - 7PM

WED., OCT. 19



FOOD • VENDORS • PRIZES

## 20% OFF

regular & clearance priced  
CLOTHING & FOOTWEAR  
that fits inside the bucket

## 10% OFF

JUST ABOUT EVERYTHING ELSE  
regular & clearance priced that fits inside the bucket  
some exclusions apply\*



Get your prize  
card in-store &  
register online  
to win one  
of ten \$75  
Runnings  
Gift Cards!  
(see store for details)

SHOP ALL 57 LOCATIONS



# Ladies NIGHT

4PM - 7PM  
WED., OCT. 19



**Get your prize card  
in-store & register online  
to win one of ten \$75  
Runnings Gift Cards!**

(see store for details)



**GRAB A PINK  
BUCKET FOR \$2.00  
WITH A PORTION  
OF THE PROCEEDS  
GOING TO A LOCAL  
CANCER CHARITY**

## ENJOY LADIES NIGHT AT ALL 57 LOCATIONS:

PUTNAM, CT  
ROCK RAPIDS, IA  
AUSTIN, MN  
BENSON, MN  
CANBY, MN  
HUTCHINSON, MN  
LITCHFIELD, MN  
MARSHALL, MN  
MONTEVIDEO, MN  
MONTICELLO, MN  
MOORHEAD, MN  
NEW ULM, MN

RED WING, MN  
REDWOOD FALLS, MN  
ST. CLOUD, MN  
SPRINGFIELD, MN  
WILLMAR, MN  
WINDOM, MN  
WORTHINGTON, MN  
BAKER, MT  
GLENDALE, MT  
CLAREMONT, NH  
HINSDALE, NH  
BROOKPORT, NY

CANANDAIGUA, NY  
CLAY, NY  
GLOVERSVILLE, NY  
JAMESTOWN, NY  
LOCKPORT, NY  
MALONE, NY  
PLATTSBURGH, NY  
ROME, NY  
WATERTOWN, NY  
BISMARCK, ND  
BOTTINEAU, ND  
CARRINGTON, ND

DICKINSON, ND  
HETTINGER, ND  
MANDAN, ND  
ABERDEEN, SD  
BELLE FOURCHE, SD  
BROOKINGS, SD  
GREGORY, SD  
HURON, SD  
MADISON, SD  
MILBANK, SD  
MITCHELL, SD  
MOBRIDGE, SD

PARKSTON, SD  
PIERRE, SD  
RAPID CITY, SD  
SIOUX FALLS, SD (2)  
STURGIS, SD  
VERMILION, SD  
WATERTOWN, SD  
WINNER, SD



\*Sale Terms & Conditions: Valid at all Runnings locations Wednesday, October 19, 2022 from 4 pm to 7 pm. Discount applies to regular priced & clearance priced in-stock merchandise only. Sale priced merchandise (in our flyer) is excluded. Customer will receive the discount on any of the items that fit inside the bucket, all at one time & in the item's original packaging. Valid in-store only. Limited to stock on hand, no rainchecks. Offer valid only while the bucket supply lasts. Another color of bucket may be substituted if pink bucket is sold out. Bucket is \$2.00 with a portion of the proceeds going to a local cancer charity. Discount does not apply to alcohol, ammunition, fishing/hunting licenses, gift cards, guns, keyways, previous purchases, rainchecks, special orders, wood heating pellets, STIML, Treeger, Weber or YETI. See store for additional details.

Prize Giveaway Terms & Conditions: Gift card registration takes place Wednesday, October 19 - Sunday, October 23, 2022 ONLINE ONLY. NO MAIL-IN ENTRIES ALLOWED. Winner will be notified & posted online by October 30, 2022. All registrants must be a minimum of 18 years of age with a valid driver's license. You do not need to be present to win. LIMIT OF ONE (1) ENTRY PER PERSON. Violation of this limit (i.e., "multiple registrations") will result in disqualification. No purchase necessary. Winner is responsible for completing a 1099 tax form prior to taking possession. If winner does not claim prize in 30 days, prize is forfeited & another winner will be randomly selected. Employees of Runnings, their immediate families & participating sales representatives are not eligible to win. Prize cannot be redeemed for cash & is not eligible for substitution. Other restrictions may apply. Contest rules are subject to change without notice.

## Redwood Financial Advisors

thrivent

# Let's assess the health of your life insurance strategy

When's the last time you reviewed your life insurance strategy? If your life has changed since then, now's the time to reassess your needs.

At Redwood Financial Advisors, we understand that life happens and things change. By reviewing and understanding your insurance needs, we can help ensure you have the appropriate coverages in place to protect your family, income and assets.

**Contact us today to learn more.**

### Springfield Office

12 West Central, Springfield, MN 56087 • 507-723-5454  
[thrivent.com/redwood](http://thrivent.com/redwood)



This is a solicitation for insurance. A licensed insurance agent/producer may contact you.

Thrivent is the marketing name for Thrivent Financial for Lutherans. Insurance products issued by Thrivent. Not available in all states. [Thrivent.com/disclosures](http://Thrivent.com/disclosures).

Insurance products, securities and investment advisory services are provided by appropriately appointed and licensed financial advisors and professionals. Only individuals who are financial advisors are credentialed to provide investment advisory services. Visit [Thrivent.com](http://Thrivent.com) or FINRA's BrokerCheck for more information about our financial advisors.

4944078.1

## ~Good Neighbor Thrift ~

Monday 9:00am-12:00pm

Tuesday-Friday 9:00-5:00pm

Saturday 9:00am-12:00pm

Accepting Fall/Winter Clothing

Selective on Miscellaneous Items, Holiday Decor

Call to inquire about drop off times. 507 -723-5778



# OCTOBER

*Specials*



eswaystores.com

**Jack Link's Beef Jerky**  
Original or Teriyaki  
3.25 oz. Bag

Save \$2.20 **\$6.99**  
Reg. \$9.19

**Giant Sunflower Seeds**  
5 oz. Bag  
Bacon Ranch, BBQ, Dill Pickle & Salted

Buy 2 Save \$2.98 **2/\$4**  
or \$3.48 each

**Slim Jim Monster Sticks**  
1.94 oz.  
Mild, Tabasco, Original

**SALTY. SWEET. TANGY. MONSTER FLAVOR**

**\$2.59**  
Reg. \$3.28

Save 70¢

**Kellogg's Pop Tarts**  
Assorted varieties including Strawberry, Brown Sugar Cinnamon and...  
New Eggo Pop Tart

Save 30¢ **99¢**  
Reg. \$1.29

2 count package

**Splash Windshield Washer Fluid**  
Original Blue — Gallon

**\$3.99**  
Reg. \$5.08

Save \$1.10

**Standard Size Hershey Candy Bars**  
Assorted Varieties including Reese's, Hershey, KitKat, Almond Joy & Caramello

Buy 2 Save 28¢ **2/\$3.50**  
or \$1.89 each

**Chex Mix Muddy Buddies**  
Chocolate Peanut Butter, Cookies 'n Cream  
4.6 oz.

Buy 2 Save \$4.18 **2/\$4**  
or \$4.08 each

**Laffy Taffy Ropes**  
.81 oz.  
Cherry, Sour Apple, Grape, Strawberry, Banana

Buy 2 Save 18¢ **2/\$1**  
or 59¢ each

**Welch's Fruit Snacks**  
4.5 oz.  
Berry Blast Juicetels, Mixed Fruit Juicetels  
Mixed Fruit Snack

Save 50¢ **\$1.99**  
Reg. \$2.49

**Pringles Grab & Go**  
Original, Sour Cream Onion, Cheddar Cheese  
2.5 oz. Can

**\$1.59**  
Reg. \$1.99

Save 40¢



OCTOBER

# Deli Specials



**Best Maid**  
**Peanut Butter Crispy Bar**  
3.5 oz.

**Save**  
**20¢**  
**\$1.49**  
Reg.  
\$1.69



**Fresh Made Sandwiches**

Chicken Salad, Dagwood,  
Ham & Cheese,  
Roast Beef, Turkey & Cheese,  
Turkey - Ham & Cheese

**Save**  
**30¢**

**\$4.99**  
Reg. \$5.29



**Any Single**  
**Topping Pizza**

**Save**  
**\$2.00**



**\$11.99**  
or \$13.99  
each

**Save**  
**70¢**

**\$2.99**  
Reg. \$3.69 ea.

*Hot & Delicious!*

**Ham & Swiss**



*Always Fresh at*  
**ExpressWay!**

**Cream Cheese Frosted**  
**Pumpkin Bars**

*Limited Time Offer*

3 Count Package

**\$4.99**



**Pumpkin**  
**Cappuccino**

*Now Available for a*  
*Limited Time*



**3 Meat Croissant**  
**Breakfast Sandwich**

Ham, Bacon & Sausage,  
Egg and Cheese

**Save**  
**\$1.00**

**\$3.99**  
Reg.  
\$4.99







We offer hair, waxing & massage services as well as lash extensions & airbrush spray tans

To book online @

<https://square.site/book/0WW6JJWQ0C4GP/pink-swan-boutique-beauty-parlor-springfield-mn>

## Contact

# Springfield Floral & Decor by Char

1 E. Central Street, Springfield, MN 56087 ~ 507.723.6764

*For all your Fresh Floral and Wedding Decor needs!!*







Clements Lumber in Morgan is looking for delivery person to join our team. Full time position. Must have a clean valid drivers license, the ability to drive a truck and trailer along with a forklift. Job duties include: loading and unloading trucks, delivering material, maintaining inventory, appearance and overall upkeep of the yard. Medical benefits, retirement plan, and paid vacation offered. Pick up an application at any one of our Clements locations or via email

Dan- [danhillesheim@clements lumber.com](mailto:danhillesheim@clements lumber.com)  
(507)723-2230

Mike- [mikerothmeier@clements lumber.com](mailto:mikerothmeier@clements lumber.com)  
(507)877-2026

Clements Lumber is a Valspar Dealer.  
For all your paint needs!





# Entrepreneurs

*Come & Go  
Coffee*

*For more information  
Contact:*

**Joe Stremcha**  
**507-723-3500**

**Every 4<sup>th</sup> Wednesday of the month**

**7:30 a.m. – 10:30 a.m.**

**Springfield Area  
Community Center**

Kickstart Springfield Come and Go Coffee Group meets on the fourth Wednesday of each month. Business owners and entrepreneurs are invited to join. Please come and enjoy a cup of coffee and meet with fellow entrepreneurs and business owners.

This will be an excellent opportunity to network, meet with advisors and have 1-on-1 consultations with peers and members of the Kickstart Springfield Board.

The core focus of Kickstart Springfield is to create a vibrant economy by finding and supporting start-ups and local entrepreneurs including business startups to existing businesses that want to grow.



**Kickstart  
Springfield**

**ENTREPRENEUR  
HUB**



DISCOVER • UPLIFT • GROW

# A Nu You Massage Therapy

MASSAGE & WELLNESS



*Offering 60 & 90 min Reflexology Sessions*

Springfield, MN  
[www.anuyoumassagetherapy.com](http://www.anuyoumassagetherapy.com)  
507-723-9121

# A NU YOU MASSAGE THERAPY

Saturday  
Appointments  
Available

Call or  
Book Online  
[anuyoumassagetherapy.com](http://anuyoumassagetherapy.com)



# ED's Repair

SPRINGFIELD, MN  
**723-5985**



# Jack Larson Seeds

**Your local independent  
Dekalb - Asgrow Dealer**

*We have the staff and equipment  
to service all of your seed needs year round!*

Agronomic Support and Field Scouting  
Seed Delivery to your farm or field  
CRP & Cover Crop Seed and Drilling  
Field View™ Installation and Support

**Custom  
Soybean  
Drilling  
and Air Seeding**

Custom Hydro-Seeding  
Monitor Calibrations  
Planter Prescriptions  
Drone Services



**Grow  
WITH Us**



**507-723-4302**

# Larson Crop Insurance

**Contact us with any  
Crop Insurance Questions**

Laurie Hoffbeck's cell ~ 507-829-8367

Jack's cell ~ 507-829-5189

Johnny's cell ~ 612-207-6542

Steve's cell ~ 507-828-3164

Evan's cell ~ 507-822-3545

Colin's cell ~ 507-430-0558

**Available 24-7**

**[www.jacklarsonseeds.com](http://www.jacklarsonseeds.com)**



## Massage & Bodywork

Deb Wahl, CMT

507-626-0567

Call or Text for an Appointment

[debs.wahl@yahoo.com](mailto:debs.wahl@yahoo.com)

# CITY OF SPRINGFIELD EMERGENCY ALERTING AND NOTIFICATION SYSTEM



Dear Residents,

The *City of Springfield* wants you and your family to be safe and informed during emergencies in our area. These may include public safety threats, dangerous weather, and traffic advisories. Information is key, and we strongly encourage you to sign up to receive text message alerts directly from the City of Springfield.

Registering for alerts is easy — simply text the Keyword below to **888777** and you'll be informed and instructed when necessary.

- **56087** (Springfield Community & Emergency Alerts)
- **CENTRAL2020** (Weekly Central Street Project Updates)
- **SNOWFALL** (Snow Removal Updates)

**TEXT THE KEYWORD TO 888777  
TO SIGN UP FOR ALERTS**



powered





## Springfield Chamber of Commerce

33 South Cass Avenue \*PO Box 134

Springfield, MN 56087

507-723-3508

[spfdchamber@newulmel.net](mailto:spfdchamber@newulmel.net)

[www.springfieldmnchamber.org](http://www.springfieldmnchamber.org)

Denise Gicker

Executive Director

Monday- Friday 9 am – 1 pm



Chamber Chatter is a publication of the  
Springfield Chamber of Commerce.  
It is published monthly to keep members  
and friends informed on events, activities,  
and programs in and around the community.

**Mission Statement** – The mission of the Springfield Area Chamber of Commerce/CVB is to strengthen the business community and take a leadership role in promoting economic growth in a spirit of cooperation and team work.

**Vision Statement** – Promote economic growth through the recruitment and retention of quality businesses and industries that will contribute to the overall economic health of the community.

Provide the membership networking opportunities, referrals, internet promotion and other membership services to promote and enhance their business.

Develop and nurture relationships with local government and other community sectors to help facilitate the needs and interests of the business community and enhance the overall quality of life within the community.

## Chamber of Commerce General Board of Directors 2022

President- Mike Granda- Farmers & Merchants State Bank

Vice President- Wendy Krier- Springfield Advance-Press

Dan Anderson- Springfield Market

Chrissy Boerboom- St. John's Circle of Care

Amanda Frank – Reiner Real Estate

Jill Riederer- City of Springfield Representative

Deb Miesen- Miesen's Color Center

Kayla Tibboel- SouthPoint Financial Credit Union

Deb Wahl- Massage & Bodywork by Deb Wahl