

CHAMBER CHATTER



August 2022

August 6th – 14th Annual Springfield Chamber Golf Tournament

August 18th – Lunch & Learn

August 24th – Drive Thru Rib Fest

*Please share the Chamber Chatter Newsletter with your employees. The newsletter is also now available on the Chamber website at <https://springfieldmnchamber.org/chamber-chatter/>. It will also be posted on Facebook when the current newsletter is available on the Chamber Website.

If there are additional email addresses you would like me to add to make sure our newsletter is getting to all who are interested, please let me know by emailing me at spfdchamber@newulmtel.net and I would be happy to add them to the email list.

WEDNESDAY, AUGUST 24TH
4:30 - 7 PM
MARTHA ANDERSON PARK

DRIVE THRU RIB FEST

Pre-Order HIGHLY Recommended by 7/21
507-723-3508 or spfdchamber@newulmtel.net
Accepting Cash or Check

FULL MEAL \$25
Full Rack
& 2 Sides

A LA CARTE
Full Rack \$18
1/2 Rack \$12
Potato Salad \$5
Coleslaw \$5
Baked Beans \$5

Springfield Chamber of Commerce



Springfield Community Learning Lunch

Join us Thursday, August 18

12pm - 1pm

Springfield Area Community Center

FREE PIZZA & WATER PROVIDED

Guest Speaker Christina Kallevig, University of Minnesota Extension Educator
with the Center for Community Vitality, will present:

Arguing isn't the Answer:

Navigating Conflict *with Style*

R.S.V.P.

by August 12 to
Springfield Chamber:

507-723-3508

spfdchamber@newulmtel.net

Jointly hosted by
Kickstart Springfield, Springfield EDA,
and Springfield Chamber.



REMINDER

RETAIL COMMITTEE MEETING

THE FIRST FRIDAY
OF THE MONTH
AT NOON

SPRINGFIELD COMMUNITY
CENTER

**ALL CHAMBER
MEMBERS WELCOME!**

CONQUER THE CONES, SHOP SPRINGFIELD

Don't let the HWY. 14 road construction project
DETOUR you from shopping in Springfield

Springfield stores and restaurants
are open and ready to serve you!



MEMBER SPOTLIGHT



The Loft Nutrition

Meal Replacement Shakes. Healthy Energy Drinks.
24 N. Cass Ave Springfield, MN



*Meet Kali Gulden,
Wellness Coach &
Nutrition Club Owner*

Hello my name is Kali Gulden! I was born and raised in New Ulm, MN. I am 25 years young. I am currently down 36 lbs & 6 pants sizes. I love helping others reach their greatest potential. Before Herbalife I was tired all the time, worked 5 jobs to make ends meet, & lacked clarity in myself and my future. Owning and working full time out of a nutrition club since March of 2022, has always been a dream of mine & now I get to live that dream every single day!

Herbalife Nutrition has been around since 1980 & has a mission to make the world healthier and happier one shake at a time! Our mission at The Loft Nutrition is to provide a healthy & happy environment for people of all ages in the community! We can't wait to meet you!



@theloftnutrition | guldenllc@gmail.com | 507-766-0040

Contact

Springfield Floral

& Decor by Char

1 E. Central Street, Springfield, MN 56087 ~ 507.723.6764

For all your Fresh Floral and Wedding Decor needs!!





+ Meet Amanda Goblish, DNP

FAMILY PRACTICE

Professional Interests:

- Family medicine
- Well child exams
- Chronic disease management
- Preventative health
- Acute care

“I enjoy family medicine because of the various age ranges of patients and potential health care needs. I am interested in promoting evidence based preventative and acute health care and supporting patients in their health care decisions.”

allinahealth.org/springfield

Allina Health 



+ Meet Lance Deeter, DO

FAMILY MEDICINE

Professional Interests:

- Practice broad spectrum outpatient family medicine
- Special interest in lifestyle preventative medicine, osteopathic manipulation, and geriatrics.
- Dermatologic procedures (shave/punch biopsy, cyst removals), toenail removal, Orthopedic procedures (shoulder and knee injections), newborn circumcisions, and GU procedures (IUD placement/removal, Nexplanon placement/removal).

“I am happy to start my career in Family Medicine and am eager to establish long term relationships with my patients and the communities of New Ulm and Springfield.”

allinahealth.org/springfield

Allina Health 



DRS. AKRE & CLARK
FAMILY EYE CARE

**FREE
KINDERGARTEN
EXAM**

**FREE EYE EXAM FOR KIDS HEADING INTO
KINDERGARTEN. PLEASE CALL OUR OFFICE FOR
AVAILABILITY. VALID ONLY AUGUST 2022**

**1715 S. BROADWAY
NEW ULM, MN 56073
507-354-8531**

**623 W. ROCK ST.
SPRINGFIELD, MN 56087
507-723-2020**

Springfield Tigers Clothing

www.deluxeprint.biz



**Many more designs available
Order online or contact me directly**



www.deluxeprint.biz



With students getting jobs, getting ready to head off to further their education, or to serve our country, it is important to see that they are taken care of financially. Our Regular Checking Account is perfect for High School & College Students and Young Adults who are ready to learn finance skills to manage their money and learn more about the banking options that we at Red Rock Bank offer.

Our Regular Checking Account includes:

- No Minimum Balance
- No Monthly Service Charges
- Visa Debit Card
- Unlimited Check Writing
- Direct Deposit
- Mobile Deposit
- Online Banking
- Bill Pay options.

In addition to deposit accounts we offer a Regular Savings account that would be optimal for students of all ages learning to save their money and help provide them with a firm financial footing for the future. The account does require a minimum opening deposit and balance, but is also interest bearing and the interest is deposited quarterly. Unlimited deposits and direct deposit are other great features that the account offers.

Stop in at either location and we will help get an account set up!

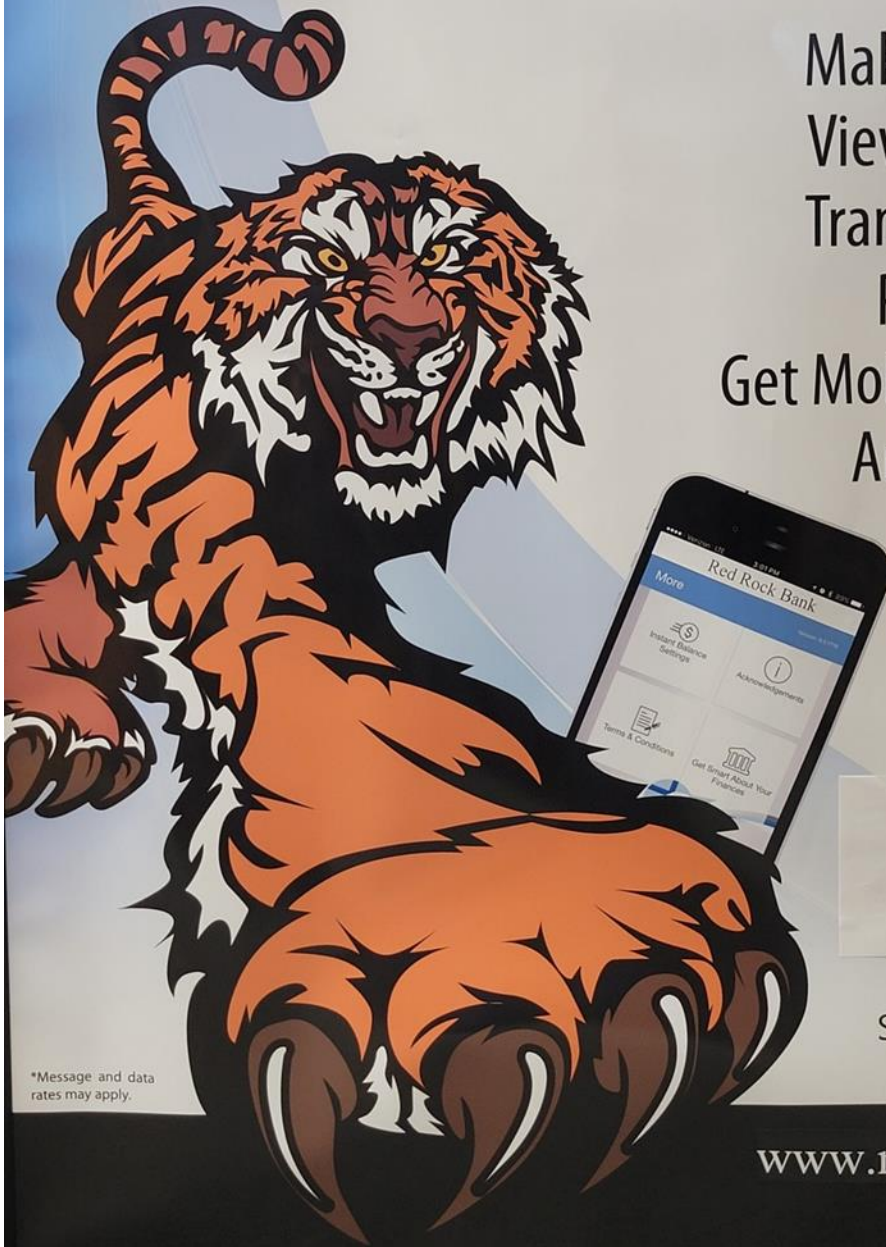
Sanborn
100 S Main
Sanborn MN 56083
507-648-3871

Springfield
2 S Marshall Ave
Springfield MN 56087
507-723-7300

Member FDIC and Equal Housing Lender

GET YOUR PAWS ON... MOBILE BANKING FROM **RED ROCK BANK!**

Make Deposits
View Balances
Transfer Funds
Pay Bills
Get Mobile Text Alerts
And More!

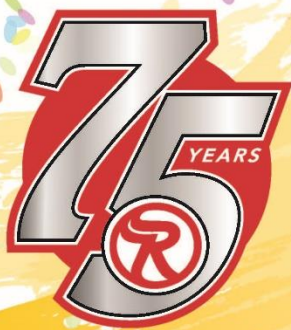


*Message and data rates may apply.



2 S Marshall Ave
Springfield, MN 56087
507-723-7300

www.myredrockbank.com
Member FDIC



Anniversary EVENTS

JOIN US MONDAY, AUGUST 1
THRU SUNDAY, AUGUST 7

10% OFF REGULAR PRICED ITEMS WITH
SOME EXCEPTIONS See store associate for details

**SENIOR
CITIZEN
DAY**

Monday, August 1

**MILITARY/
POLICE/FIRE/
EMT DAY**

Wednesday, August 3

**HEALTHCARE
WORKERS
DAY**

Thursday, August 4



Limit 2 per customer.
While supplies last.

**FREE
HOT
DOGS**

Fri., August 5
& Sat., August 6
11am to 2pm



**FREE
COOKIES**

Sat., August 6
until 10am
& Sun., August 7
until noon
While supplies last.

*Win
this!*

2022 FORD F-150®

To register & for sweepstakes details go to:
www.runnings.com/2022fordtruckgiveaway



From Kluse Motors
Marshall, MN



**CARDMEMBER
APPRECIATION**

July 28 - August 7

Cardholders earn 7.5 points on every \$1 spent at Runnings with the Runnings Mastercard® during this event. See store poster for details.

IN-STORE & ONLINE



gift card

EXTRAVAGANZA

tuesday • wednesday • thursday

AUGUST 9 • 10 • 11

GET UP TO \$75 IN FREE GIFT CARDS
ON ALL QUALIFYING PURCHASES



gift card extravaganza

AUGUST
9 • 10 • 11

IN-STORE & ONLINE



**RECEIVE A \$10
GIFT CARD WHEN
YOU SPEND \$100 PRE-TAX**



**RECEIVE A \$25
GIFT CARD WHEN
YOU SPEND \$200 PRE-TAX**



**RECEIVE A \$75
GIFT CARD WHEN
YOU SPEND \$500 PRE-TAX**

VISIT YOUR NEAREST RUNNINGS STORE, NOW WITH 57 LOCATIONS!

PUTNAM, CT
ROCK RAPIDS, IA
AUSTIN, MN
BENSON, MN
CANBY, MN
HUTCHINSON, MN
LITCHFIELD, MN
MARSHALL, MN
MONTEVIDEO, MN
MONTICELLO, MN
MOORHEAD, MN
NEW ULM, MN

RED WING, MN
REDWOOD FALLS, MN
ST. CLOUD, MN
SPRINGFIELD, MN
WILLMAR, MN
WINDOM, MN
WORTHINGTON, MN
BAKER, MT
GLENDAVE, MT
CLAREMONT, NH
HINSDALE, NH
BROCKPORT, NY

CANANDAIGUA, NY
CLAY, NY
GLOVERSVILLE, NY
JAMESTOWN, NY
LOCKPORT, NY
MALONE, NY
PLATTSBURGH, NY
ROME, NY
WATERTOWN, NY
BISMARCK, ND
BOTTINEAU, ND
CARRINGTON, ND

DICKINSON, ND
HETTINGER, ND
MANDAN, ND
ABERDEEN, SD
BELLE FOURCHE, SD
BROOKINGS, SD
GREGORY, SD
HURON, SD
MADISON, SD
MILBANK, SD
MITCHELL, SD
MOBRIDGE, SD

PARKSTON, SD
PIERRE, SD
RAPID CITY, SD
SIOUX FALLS, SD (2)
STURGIS, SD
VERMILLION, SD
WATERTOWN, SD
WINNER, SD



SHOP IN-STORE & ONLINE AUGUST 9 - 11, 2022. All Runnings Gift Cards received during the Gift Card Extravaganza promotion are usable starting Friday, August 12, 2022. Earn up to \$75 in Runnings Gift Cards. Not valid on alcohol, ammunition, fishing/hunting licenses, gift cards, guns, layaways, previous purchases, rainchecks, special orders, wood heating pellets, STIHL®, Traeger®, Weber® or YETI®.

Looking for a new or redesigned WEBSITE?

We are offering a . . .

THIS SPECIAL GOOD THRU AUG. 31, 2022!

SUMMER SPECIAL — \$79/mo

• UP TO FIVE PAGES • UP TO THREE EMAILS • RESPONSIVE SITE DESIGN • AND MUCH MORE!

WEBSITES WE HAVE DONE —

Bar-M Horses — www.barmhorses.com
BJ Video — www.bjvideowindom.com
Blue Stem Ag — www.bluestemag.com
Community Bible Church of Mt. Lake — www.cbcmountainlake.com
Cottonwood County Citizen — www.windomnews.com
Cottonwood County Fair — www.cottonwoodcountyfair.org
Cottonwood County Soil and Water — cottonwoodswcd.org
Dave's Custom Woodworking — www.davescustomwoodworking.com
Duffy's Bar & Restaurant — www.duffysmn.com
Eagle Ag — www.eagleag.com
Fairland Management — www.fairlandmgmt.com
Greater Blue Earth River Basin — www.gberba.org
Gove Acres — www.goveacres.com
Holt's Cleaning Service — www.holtscleaningservice.com
Larson's Home Furnishings — www.larsonfurniture.com
Lutheran Church of Our Savior — www.oursaviorslutheran.net
Midwest Free Community Papers — www.mfcp.org
Mt. Lake Foundation — www.mtlakefoundation.com
Mt. Lake News — www.mtlakenews.com
North Heron Lake Game Producers — www.nhlgpa.org
Northwind Great Danes — www.northwindgreatdanes.com
PM Repair of Windom — www.pmrepairwindom.com
Remick Foundation — www.remickfoundation.com
Royal Glass of Windom — www.royalglassmn.com
Ron's Electric — www.ronselectricmn.com
Rushmore Industries — www.rushmoreindustries.com
Tri Parish Church — www.triparishcfw.org
Wellness & Vitality Chiropractic — www.wellnessvitalitychiro.com
Westbrook Mutual — www.westbrookmutual.com
Windom Area Foundation — www.windomareafoundation.com
Johnson, Tibodeau, Bottin CPA's — www.windomcpas.com
Windom Free Church — www.windomfreechurch.org
Windom Zeds Volleyball — www.windomzeds.com

ASK US ABOUT —

- Internet Marketing
- Search Engine Optimization
- Social Media Advertising
- Pay-Per-Click Advertising
- Email Marketing
- Websites

NEWLY LAUNCHED WEBSITES —



Through this variety of marketing options, we can now help businesses, large and small, that are looking to broadcast their messages even more effectively through digital and print media!

CITIZEN

Publishing Company

Powered by  **arvig.**
Media

Call us today about this great offer!

507-831-3455 or 800-658-2510



Lang's Automotive would like to wish the
Burnstown/Brookville 4-H Club
BEST OF LUCK
at
Brown County Fair this month August 10-14!



WELCOME TO THE SPEED OF NOW

Gig-speed fiber
is coming!

NuveraGigCities.com





'Serving customers beyond connectivity'



"Here at the LFN, we depend on MVTV Wireless every day!"

~ Lynn Ketelsen,
Linder Farm Network

320-564-4807

www.mvtvwireless.com

- ✓ Robust, fully-supported network
- ✓ Local technical & customer support
- ✓ Community service built on integrity
- ✓ Referral Program
- ✓ Worry Free Connectivity with MVTV's Managed Wifi Service



Full-Service Broadband Internet Provider

ED's Repair
SPRINGFIELD, MN
723-5985

BROWN



TREE SERVICE

- ♦ Tree Removal
- ♦ Tree Trimming
- ♦ Stump Removal
- ♦ Storm Clean Up
- ♦ Free Estimates
- ♦ 24 Hour Emergency Service
- ♦ 15 Years Experience
- ♦ Fully Licensed & Insured

Brown Tree Service, LLC

Douglas Brown 507-220-0672

Brigette Brown 507-220-0243

browntreeservicemn@yahoo.com

Springfield, MN

Jack Larson Seeds

**Your local independent
Dekalb - Asgrow Dealer**

*We have the staff and equipment
to service all of your seed needs year round!*

Agronomic Support and Field Scouting
Seed Delivery to your farm or field
CRP & Cover Crop Seed and Drilling
Field View™ Installation and Support

**Custom
Soybean
Drilling
and Air Seeding**

Custom Hydro-Seeding
Monitor Calibrations
Planter Prescriptions
Drone Services



**Grow
WITH Us**



507-723-4302

Larson Crop Insurance

**Contact us with any
Crop Insurance Questions**

Laurie Hoffbeck's cell ~ 507-829-8367

Jack's cell ~ 507-829-5189

Johnny's cell ~ 612-207-6542

Steve's cell ~ 507-828-3164

Evan's cell ~ 507-822-3545

Colin's cell ~ 507-430-0558

Available 24-7

www.jacklarsonseeds.com



Massage & Bodywork

Deb Wahl, CMT

507-626-0567

Call or Text for an Appointment

debs.wahl@yahoo.com

Join our Team of Super Heroes

If you are a caring individual and interested in becoming employed by St. John's Circle of Care, apply online:

sjlhome.com/employment/

or pick up an application at St. John Lutheran Home

**WE'RE
HIRING!**



We have a job to fit everyone's skills and abilities in various departments throughout our campus at St. John Lutheran Home and The Maples.

Positions Open Now

- Nursing
- Dietary
- Plant operations
- Child daycare

Ask about our
Chamber Bucks
giveaway!



**ST. JOHN'S
CIRCLE OF CARE**

A TRADITION... FOR ALL AGES

507-723-3200
Springfield, MN
www.sjlhome.com





FREE FRAUD SEMINAR

Featuring: Martin Fleischhacker
Sr. Financial Fraud Ombudsman



Tuesday, September 13, 2022

1:30 pm


Springfield Area Community Center

We're in this together!

A collaborative effort of F&M Bank, SPFCU, and Red Rock Bank
to educate our communities on Scams, Id Theft Incidents, and more!

Register today by calling 723-4800!






St. Raphael Catholic Church

Fall Festival



Sunday, September 11th
Starting with Mass at
10:30 AM

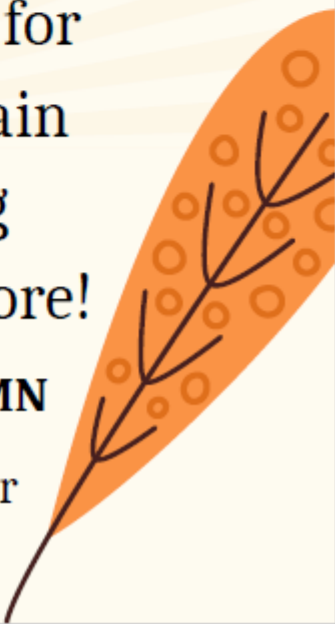
Fun for the entire family



Join us for outdoor food festival,
silent and live auction, Vikings
Football, beer garden, games for
the kids, Raffle Drawings, train
rides, shaved ice, Bean Bag
Tournament, and so much more!

20 West Van Dusen, Springfield, MN

Be sure to follow us of Facebook for
even more updates!



Bean Bag Tournament



Sunday, September 11, 2022

12:00am-4:00pm

Registration begins at 11:00am

St. Raphael Catholic Church Parking Lot

20 W Van Dusen

Springfield, MN 56087

\$20.00 per team entry fee

50% payout for 1st place winning team

Ages 16 and up

Pre-Registration and Day of Registration

St. Raphael Fall Festival

St. Raphael Church Fall Festival 2022 Bean Bag Tournament Registration

Team Name _____

Player 1 Name _____

Phone _____

Player 2 Name _____

Phone _____

\$20.00 Registration Fee payable to St. Raphael Catholic Church

Boards/Bean Bags will be provided.

For office use only:

Registration received _____

Entry Fee received _____



Redwood Area Group

thrivent

Help pave the way to future success

It's hard to overestimate the value of a college education. But, as you know, it can come with a hefty price tag and a considerable amount of debt. While choosing the right college is important, figuring out how to pay for it may be just as important.

At the Redwood Area Group, we can help you find ways to financially support whatever path your loved one chooses. Time is one of your greatest assets when it comes to saving for college. By starting early, you've taken a critical step to helping lessen the financial impact of earning that college degree.



Contact us today to learn more

thrivent.com/redwoodarea

Springfield office

12 W. Central, Springfield, MN 56087
507-723-5454



4692032.1

REINER

REAL ESTATE

Springfield, MN | www.reinerre.com | Office: 507.723.5233 | Amanda Frank, Broker

Check out a few of our newest listings!

Visit www.reinerre.com for a complete listing of our properties



221 N Jefferson Avenue, Springfield - \$94,500

Located on a corner lot across from the public school and one block from the city park, this spacious, well-maintained 4 bedroom, 2 1/2 bath home has an attached oversized double garage (insulated and heated) and features an open eat-in kitchen/dining room with patio doors leading out to the beautiful sunroom, a master bedroom with an adjoining updated master bathroom with a walk-in shower, and a main level laundry room with great storage space. The basement has a large family room with an egress window, office/playroom, the 4th bedroom with an egress window, a 1/2 bath, and a huge storage room!



St. John First Addition Lots

\$22,500/lot

Located along County Road 5 on the southeast side of Springfield, the spacious St. John First Addition lots offer connections to city water, city sewer, and electricity.

Come build your dream home in this developed neighborhood! Approximately 0.56 acres each. Give us a call for details!



307 S Hoyt Ave, Springfield - \$139,000

This well-maintained 3-bedroom home is located close to the school and park and features updated windows throughout (installed 2017 & 2020), refinished hardwood floors, a beautiful sunroom addition in 2014 leading out to a maintenance-free deck with built-in seating, a large living room with lots of windows, an eat-in kitchen/dining room, & great built-in storage space. The basement has a drain tile system & offers great potential for additional bedrooms/finished sq. ft. The laundry is in the basement, but hook ups are available on the main level for main level living if desired. Attached single garage. Beautiful landscaping & flower beds in the peaceful backyard.

Inventory is LIMITED and there are many buyers on the hunt for a new home this summer! If you're thinking of selling, now is an ideal time!

Give us a call -723-5233 - so we can visit about the next step!



The Springfield Area Food Shelf has been extremely busy and this will continue. We served 71 families in July which has never happened since program started in 2013.

We need to find more assistance on the truck delivery days which is the 2nd and 4th Tuesday of the month. If you want to help, please send us your name and we will get in touch with you. Truck usually comes around 10:30-10:45 am at which time a second notice is sent out to all individuals who can assist. It takes about 30 minutes to get the inventory off the truck and into the food shelf.

We can also use some more volunteers to assist on service days, which is Tuesday's 5-7pm and Thursdays 9:30-11:30am. We have a variety of volunteer jobs available if you wish to help out at the food shelf.

We are encouraging clients to continue to call in and let us know when they prefer to come. Message can be left on the food shelf phone. Number is 507-723-3663. Walk-ins are able to come but you may have to wait some for opening to fit you in. We provide service to anyone that comes to the food shelf.

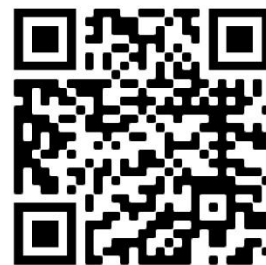
If you have any questions about the food shelf, would like a tour, please call food shelf phone and leave message and someone will call you back.

Thanks to all who donate money or food. Special thanks to all the volunteers who help with the program.



ENJOY THE SUMMER

Earn **1.5% cashback** on every purchase you make with SouthPoint's VISA Rewards Credit Card! Visit <https://bit.ly/SPFCUSUMMERCC> or Scan the QR Code with your smart device camera!



*APR-Annual Percentage Rate. Introductory rates as low as 0% APR applies for 6 months on balance transfers. Then, a low standard variable rate applies ranging from 13.00% – 18.00% APR. Interest rates are subject to change based on the type of loan, the collateral, loan to value, borrower's credit history, account relationship, and automatic payments. Rates disclosed are the lowest rates available at SouthPoint FCU. Other conditions may apply. Foreign Transaction Fee – 1.00% of each multiple currency transaction in U.S. dollars. 0.80% of each single currency transaction in U.S. dollars.

www.southpointfinancial.com | 877-794-6712 | Federally Insured by NCUA | Equal Housing Opportunity

BROWN COUNTY FREE FAIR PRESENTS:

SAWYER BROWN

OPENING ACT:
RED LETTER BAND



**FRIDAY
AUGUST 12**

Gates Open at 4:00

**Concert Starts at
6:00 pm**

Schell's
ESTD BEER 1860

Runnings



Schaefer
COMPANIES
WELL COMPANY - CRANE SERVICE - CONTRACTING
Est. 1922

Radio MANITO

AUG. 10
Wednesday - 7:00 PM
Truck & Tractor Pull
KNUJ

AUG. 11
Thursday - 7:00 PM
Demo
Hoffman Construction

AUG. 13
Saturday - 6:00 PM
Demo
Weelborg

Forward in Faith

Open to all youth - 7th-12th grades!

Join us for a time of food, fun, and fellowship. A place just for youth to spend Sunday evening before the beginning of a new hectic week. We hope that this will be a time for our youth to grow in the knowledge of their faith, explore more about what faith is, or just meet Jesus for the first time. Dinner will be served, games will be played, & we hope you will find this to be a place where you belong.

*Come to me, all who labor and are heavy laden, and I will give you rest. -
Matthew 11:28*

Hosted by St. Johns Lutheran Church and the Luther League of Springfield.

224 N. Mary Ave
Springfield, MN
sjlcspringfieldmn.org



May 1 – Sept. 30, 2022

Sunglasses Style Event



EYEC-121008

Get a new look and protect your eyes with a new pair of sunglasses from Avera Medical Group Optometry.

30% Off Sunglasses
May 1 – Sept. 30, 2022
prescription or non-prescription

Offer good at Marshall, Redwood Falls, Springfield and Tracy locations.

No other discounts, coupons, vision plans or insurance will apply.

Avera 
Medical Group

Avera.org/Marshall



Clements Lumber in Morgan is looking for delivery person to join our team. Full time position. Must have a clean valid drivers license, the ability to drive a truck and trailer along with a forklift. Job duties include: loading and unloading trucks, delivering material, maintaining inventory, appearance and overall upkeep of the yard. Medical benefits, retirement plan, and paid vacation offered. Pick up an application at any one of our Clements locations or via email

Dan- danhillesheim@clementsllumber.com

(507)723-2230

Mike- mikerothmeier@clementsllumber.com

(507)877-2026

Clements Lumber is a Valspar Dealer.
For all your paint needs!



A Nu You Massage Therapy

MASSAGE & WELLNESS



Offering 60 & 90 min Reflexology Sessions

Springfield, MN
www.anuyoumassagetherapy.com
507-723-9121

A NU YOU MASSAGE THERAPY

Saturday
Appointments
Available

Call or
Book Online
anuyoumassagetherapy.com



WE'VE MOVED!



**HAS A NEW
ADDRESS!**



104 N MARSHALL AVE
SPRINGFIELD MN 56087
PHONE: (507) 227-8767



**Appliances • Plumbing & Drain
Heating & AC • Flat Roofing**

**See us for your advertising and printing needs,
and much more!**

- Gift Subscriptions
- Photo Reprints
- Full Color Copies
- Return Address Labels
- Letterhead
- Business Cards
- Post Cards
- Flyers
- Laminating
2x3" – 11x17"
- Custom stamps
- United States Flags
3x5' or 4x6'

Springfield
Advance-Press

13 S. Marshall Avenue | 507-723-4225

AUGUST

Specials

The **ExpressWay**
BY APPLER ENTERPRISES, INC.

www.expresswaystores.com

**Slim Jim
Savage Meat
Sticks**
3 oz.
Original & Mild

Save 70¢

\$3.59
Reg. \$4.29




**Haribo
Gummy Snacks**
5 oz. Bag
Gold Bears, Twin Snakes, Starmix

Save 40¢

\$1.79
Reg. \$2.19



**Jack Links
Steak Strips**
3 oz.
Original Thick Cut,
Cracked Pepper Garlic

Save 1.20

\$7.99
Reg. \$8.79




Sweet Chaos Popcorn
1.5 oz. Bag
Chocolatey Double Drizzle,
Peanut Butter Cup Drizzle, Cake Batter

Save 60¢

\$1.29
Reg. \$1.89

**General Mills
Treat Bars**
Cinnamon Toast Crunch,
Golden Grahams, Lucky Chams

Save 30¢

\$1.69
Reg. \$1.89

1.72 - 2.1 oz.




**TGIF
Potato Skins**
Cheddar Bacon,
Sour Cream Onion

**Buy 2
Save \$2.58**

2/\$3
or \$2.79 each



Land O Lakes Milk
Quart
White, 2%, Chocolate

Save Up To 60¢

\$1.79
Reg. \$2.19-\$2.39



**San Luis
Burritos**
8 oz.

Bean & Cheese, Pork Carnitas,
Chicken Rice & Cheese,
Beef & Bean Green Chili,
Spicy Red Hot Beef & Bean

2/\$7
or \$4.29 each



**Famous Amos Belgian
Chocolate Chip Cookies**
2 oz.

**Buy 2
Save 98¢**

2/\$3
or \$1.99 each



**Bigs
Sunflower
Seeds**
5.35 oz.

Original, Cracked Pepper,
Dill Pickle, Bacon, Ranch,
Buffalo Wild Wing.

Save 80¢

\$2.99
Reg. \$3.79

AUGUST

Deli Specials



www.expresswaystores.com

Any Large Single Topping Pizza

Save \$2.00

Enjoy A Pizza Tonight?

\$11.99
Reg. \$13.99



New!

Fresh Chicken Sandwich
Crispy or Spicy



Save \$1.00

\$3.49
Reg. \$4.49

Croissant Breakfast Sandwich



Ham, Egg & Cheese,
Bacon, Egg & Cheese,
Sausage, Egg & Cheese

Save 30¢

\$2.99
Reg. \$3.29

New!

Dutchman
Classic
Apple Turnover

\$2.49
Each



Always Fresh at **ExpressWay!**



*Always
Fresh*

Wraps

8 oz.

Club, Grilled Chicken,
Crispy Chicken,
Dagwood & Buffalo Chicken



\$4.49

Reg. \$4.99

Save 50¢

Pork Egg Rolls

Buy 2
Save 98¢

2/\$4
or \$2.49
each



Monday Special

TACO SALAD

Large Bowl **\$4.00** Reg. \$4.99

Beef or Chicken



Taco Express

Wednesday Special

TACOS

Hard or Soft Shell Tacos **2 \$3** Reg. \$1.99

Beef or Chicken



Friday Special

WALKING TACOS

Regular Size **\$3** Reg. \$4.79

Beef or Chicken



Tacos

Hard or Soft Shell Tacos

Beef \$1.99
Beef, Lettuce, Cheese, Picante Sauce

Chicken \$1.99
Chicken, Lettuce, Cheese, Picante Sauce

Hard or Soft Shell Supreme

Beef Supreme \$2.49
Beef, Lettuce, Cheese, Tomato, Onion, Black Olives, Sour Cream, Picante Sauce

Chicken Supreme \$2.49
Chicken, Lettuce, Cheese, Tomato, Onion, Black Olives, Sour Cream, Picante Sauce

Walking Tacos

Regular \$4.79
Meat, Cheese, Lettuce, Picante Sauce

Supreme \$4.99
Meat, Cheese, Lettuce, Picante Sauce, Black Olives, Onions, Sour Cream, Tomato

6 Pack Tacos \$9.99
Hard Shell Tacos or Soft Shell Tacos



Taco Express

Burritos

Bean Burrito \$1.79
Beans, Cheese, Onion, Picante Sauce

Beef Burrito \$2.99
Beef, Cheese, Onion, Picante Sauce

Beef/Bean Burrito \$2.29
Beef/Bean, Cheese, Onion, Picante Sauce

Beef/Bean Burrito Supreme \$2.99
Beef/Bean, Lettuce, Cheese, Tomato, Onion, Black Olives, Sour Cream, Picante Sauce

Chicken Burrito Supreme \$2.99
Refried Beans, Chicken, Lettuce, Cheese, Tomato, Onion, Black Olives, Sour Cream, Picante Sauce

The Express Way
HAPPY CUSTOMERS ARE OUR GOAL

Taco Salad

Beef Taco Salad Bowl \$4.99
Chips, Lettuce, Beef, Cheese, Tomato, Black Olives, Sour Cream & Picante Sauce

Chicken Taco Salad Bowl \$4.99
Chips, Lettuce, Chicken, Cheese, Tomato, Black Olives, Sour Cream & Picante Sauce

Sides

Nachos \$2.79
Chips, Cheese, Jalapenos

Nacho Supreme \$4.99
Beef/Bean, Chips, Cheese, Tomato, Onion, Black Olives, Jalapenos, Sour Cream, Salsa

Refried Beans \$1.49

Nacho Cheese 50¢

Seasoned Potato Rounds 32 ct. \$2.99
Add .75 for extra chicken or beef
Add .55 for all other extras






POPCORN WAGON 2022

Schedule

Saturday, May 28, 10:00-5:00 (Memorial Day Weekend)

Saturday, June 25, 10:00-5:00 (Autofest)

Saturday, July 16, 10:00-5:00 (Bavarian Blast)

Friday, July 22, 10:00-5:00 (Crazy Days)

Saturday, July 23, 10:00-8:00 (Crazy Days)

Friday, August 19, 10:00-5:00 (US/Dakota War Commemoration)

Saturday, August 20, 10:00-5:00 (US/Dakota War Commemoration)

Saturday, September 24, 10:00-5:00 (Popcorn Wagon Blast)

Saturday, October 8, 10:00-5:00 (Oktoberfest)

Saturday, October 15, 10:00-5:00 (Oktoberfest)

Part of New Ulm's history since 1914, the popcorn wagon is located in front of the Museum at 2 N. Broadway. All proceeds benefit the Brown County Historical Society.

THE HISTORIC KIESLING HOUSE

Features: Demonstration of Leather Work By Dan Cochran



Historic Kiesling House

Explore the past at the Historic Kiesling House constructed in 1861; it survived the U.S.- Dakota War of 1862.

Learn about early pioneer settlement, customs and traditions of area immigrants and events, like the U.S.- Dakota War of 1862, that shaped New Ulm.

Examine the development of community and influence of social and political issues on residents that lived in this area of Minnesota.

Saturday, August 6th, 2022

1:00pm to 4:00pm

Leather worker, Dan Cochran is an artisan and owner of Logos Leathercraft. Logos Leathercraft began in 1995. After experimenting with several crafts, leather craft is what won Dan's heart. His work will be available to purchase on site.

The Historic Kiesling House

220 North Minnesota Street

New Ulm, MN

Open Friday and Saturday 12pm-4pm



For more information go to the BCHS website:

browncountyhistorymn.org

call: 507-233-2621 or email: education@browncountyhistorymn.org



Entrepreneurs

*Come & Go
Coffee*

*For more information
Contact:*

Joe Stremcha
507-723-3500

Every 4th Wednesday of the month

7:30 a.m. – 10:30 a.m.

**Springfield Area
Community Center**

Kickstart Springfield Come and Go Coffee Group meets on the fourth Wednesday of each month. Business owners and entrepreneurs are invited to join. Please come and enjoy a cup of coffee and meet with fellow entrepreneurs and business owners.

This will be an excellent opportunity to network, meet with advisors and have 1-on-1 consultations with peers and members of the Kickstart Springfield Board.

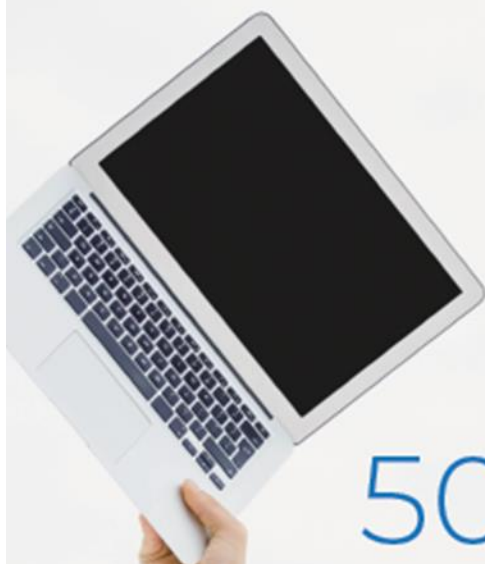
The core focus of Kickstart Springfield is to create a vibrant economy by finding and supporting start-ups and local entrepreneurs including business startups to existing businesses that want to grow.



**Kickstart
Springfield**

**ENTREPRENEUR
HUB**

REV
RURAL ENTREPRENEURIAL VENTURE
DISCOVER • GROW • GROW



ARG!
GET TECH HELP AT
507-276-5059

TECH|UNLIMITED

YOUR ONE STOP FOR TECHNOLOGY NEEDS

techunlimitedllc.com



CITY OF SPRINGFIELD EMERGENCY ALERTING AND NOTIFICATION SYSTEM



Dear Residents,

The *City of Springfield* wants you and your family to be safe and informed during emergencies in our area. These may include public safety threats, dangerous weather, and traffic advisories. Information is key, and we strongly encourage you to sign up to receive text message alerts directly from the City of Springfield.

Registering for alerts is easy — simply text the Keyword below to **888777** and you'll be informed and instructed when necessary.

- **56087** (Springfield Community & Emergency Alerts)
- **CENTRAL2020** (Weekly Central Street Project Updates)
- **SNOWFALL** (Snow Removal Updates)

**TEXT THE KEYWORD TO 888777
TO SIGN UP FOR ALERTS**



powered



Springfield Chamber of Commerce

33 South Cass Avenue *PO Box 134

Springfield, MN 56087

507-723-3508

spfdchamber@newulmel.net

www.springfieldmnchamber.org

Denise Gicker

Executive Director

Monday- Friday 9 am – 1 pm



Chamber Chatter is a publication of the
Springfield Chamber of Commerce.
It is published monthly to keep members
and friends informed on events, activities,
and programs in and around the community.

Mission Statement – The mission of the Springfield Area Chamber of Commerce/CVB is to strengthen the business community and take a leadership role in promoting economic growth in a spirit of cooperation and team work.

Vision Statement – Promote economic growth through the recruitment and retention of quality businesses and industries that will contribute to the overall economic health of the community.

Provide the membership networking opportunities, referrals, internet promotion and other membership services to promote and enhance their business.

Develop and nurture relationships with local government and other community sectors to help facilitate the needs and interests of the business community and enhance the overall quality of life within the community.

Chamber of Commerce General Board of Directors 2022

President- Mike Granda- Farmers & Merchants State Bank

Vice President- Wendy Krier- Springfield Advance-Press

Dan Anderson- Springfield Market

Chrissy Boerboom- St. John's Circle of Care

Amanda Frank – Reiner Real Estate

Jill Riederer- City of Springfield Representative

Deb Miesen- Miesen's Color Center

Kayla Tibboel- SouthPoint Financial Credit Union

Deb Wahl- Massage & Bodywork by Deb Wahl