

BROWN COUNTY HISTORICAL SOCIETY

PRESENTS

A Tribute to Mothers Luncheon

Tea Steeped with Totally Exquisite Aprons



**Thursday
May 12, 2022
12:00pm Lunch
12:30pm Program**

**Wear an apron
to qualify for a
door prize**



Turner Hall

102 S State Street, New Ulm, MN

\$20.00 Per Person

**Purchase Tickets at the Brown County Museum or
at the New Ulm Chamber of Commerce**

call 507-233-2621 or email education@browncountyhistorymn.org
for more information





**Show your
Support for
the
Springfield
Tigers**

CHECK OUT OUR WEBSITE

www.deluxeprint.biz

**AND SEE OUR NEW DESIGNS FOR
*Baseball & Softball Teams
and the Music Department***

Order online or contact me directly



www.deluxeprint.biz

BROWN



Est. 2021

TREE SERVICE

- ♦ Tree Removal
- ♦ Tree Trimming
- ♦ Stump Removal
- ♦ Storm Clean Up
- ♦ Free Estimates
- ♦ 24 Hour Emergency Service
- ♦ 15 Years Experience
- ♦ Fully Licensed & Insured

Brown Tree Service, LLC

Douglas Brown 507-220-0672

Brigette Brown 507-220-0243

browntreeservicemn@yahoo.com

Springfield, MN

MEMBER SHRED DAY

MONDAY, MAY 16TH

- Springfield: 8 a.m. - 10 a.m.
- Sleepy Eye: 10:30 a.m. - 12:30 p.m.
- New Ulm: 1 p.m. - 3 p.m.

TUESDAY, MAY 17TH

- North Mankato: 8 a.m. - 10 a.m.
- St. Peter: 10:30 a.m. - 12:30 p.m.

SATURDAY MAY, 21ST

- Hutchinson: 9 a.m. - 12 p.m.

SATURDAY JUNE, 4TH

- Waconia: 9 a.m. - 12 p.m.



SouthPoint members can bring
2-3 boxes of personal documents
to be shred on-site.

www.southpointfinancial.com | 877-794-8712 | Federally Insured by NCUA | Equal Housing Opportunity





**Appliances • Plumbing & Drain
Heating & AC • Flat Roofing**

A business card for Grain States LLC. The background is a black and white photograph of a welder wearing a helmet and protective gear, working on a metal structure. The text is overlaid on the left side of the card.

Grain States LLC
Quality Millwright, Piping And Erection Services

Michael Wendt
President

Cell 507-220-3436
Office/Fax 507-723-8185
E-mail grainstatesllc1@gmail.com
38790 E Cottonwood St
Springfield, Mn 56087

ED's Repair

SPRINGFIELD, MN
723-5985



CLEMENTS LUMBER

INC.

SPRINGFIELD

(507) 723-2230

REDWOOD

(507) 644-2100

MORGAN

(507) 249-3122

COMFREY

(507) 877-2026

Clements Lumber is a Valspar Dealer.
For all your paint needs!



MAY

Deli Specials



www.expresswaystores.com

Large Pepperoni Pizza

\$9.99

Reg. \$12.99
each

**Save
\$3.00**



Personal Pan Breakfast Pizza



**Save
\$1.00**

\$3.99

Reg.
\$4.99

Peanut Butter Crispy Bar

**Save
20¢**

5.5 oz.

\$1.49

Reg.
\$1.69



Your Choice

State Fair
Corn
Dogs or

Buy 2

Save 98¢



2/\$3

or \$1.99
each

Pork Egg Rolls



Always Fresh at **ExpressWay!**

*Always
Fresh*

Wraps

Club, Buffalo Chicken,
Crispy Chicken,
Dagwood & Grilled Chicken



\$3.99

Reg. \$4.49

**Save
50¢**

Chicken Sandwich

Crispy Chicken or
Buffalo Spicy Chicken

**Save
\$1.00**

\$2.99

Reg.
\$3.99



MAY

Specials

The **ExpressWay**
STAPLER ENTERPRISES, INC.

www.expresswaystores.com



Dots Pretzels & Cheese Curds
3.5 - 5 oz. Bag
Original, Honey Mustard, Southwest Seasoned

Buy 2
Save \$1.98
2/\$6
or \$3.00 each

Life Saver Gummies



Buy 2
Save \$1.18
2/\$5
or \$3.00 each



Planters Tube Peanuts
1.75 oz. Tube
Salted, Heat, Dry Roasted

Buy 2
Save 29¢
2/\$1.09
or 60¢ each



Old Trapper Beef Jerky
10 oz. Bag
Old Fashioned, Peppercorn, Hot & Spicy, Teriyaki

\$13.99



Biggs Sunflower Seeds
5.50 oz.
Original, Cracked Pepper, Dill, Bacon, Buffalo Wing, Ranch

Save 90¢
\$2.29
Reg. \$3.19

Splash Washer Fluid
Original 20 Degrees



\$3.99
Reg. \$5.00

Save \$1.10



Polka Dot Milk
Pint
2%, Skim, Chocolate, Extra Creamy Chocolate

Save 26¢
\$1.29
Reg. \$1.55



Cheesewah Cheese Snack
Including the **NEW Breakfast Taco!**
2.5 - 3.25 oz.

\$2.49
Reg. 2.79

Save 30¢

Mild Cheddar & Salsal, Pepperjack & Salsal, Colby Jack & Salsal



King Size

Hershey Candy Bars

Reese's Peanut Butter Lovers Cups
Ultimate Lovers Peanut Butter Cups
Reese's Peanut Butter Cups

Buy 2
Save \$1.28
2/\$3.50
or \$2.38 each



Hostess Snack Cakes
Assorted Varieties

Buy 2
Save \$1.58
2/\$4
or \$2.78 each

Monday Special

TACO SALAD

Large Bowl **\$4.00** Reg. \$4.99

Beef or Chicken



Taco Express

Wednesday Special

TACOS

Hard or Soft Shell Tacos **2 \$3** Reg. \$1.99

Beef or Chicken



Friday Special

WALKING TACOS

Regular Size **\$3** Reg. \$4.79

Beef or Chicken



Tacos

Hard or Soft Shell Tacos

Beef \$1.99
Beef, Lettuce, Cheese, Picante Sauce

Chicken \$1.99
Chicken, Lettuce, Cheese, Picante Sauce

Hard or Soft Shell Supreme

Beef Supreme \$2.49
Beef, Lettuce, Cheese, Tomato, Onion, Black Olives, Sour Cream, Picante Sauce

Chicken Supreme \$2.49
Chicken, Lettuce, Cheese, Tomato, Onion, Black Olives, Sour Cream, Picante Sauce

Walking Tacos

Regular \$4.79
Meat, Cheese, Lettuce, Picante Sauce

Supreme \$4.99
Meat, Cheese, Lettuce, Picante Sauce, Black Olives, Onions, Sour Cream, Tomato

6 Pack Tacos \$9.99
Hard Shell Tacos or Soft Shell Tacos



Taco Express

Burritos

Bean Burrito \$1.79
Beans, Cheese, Onion, Picante Sauce

Beef Burrito \$2.99
Beef, Cheese, Onion, Picante Sauce

Beef/Bean Burrito \$2.29
Beef/Bean, Cheese, Onion, Picante Sauce

Beef/Bean Burrito Supreme \$2.99
Beef/Bean, Lettuce, Cheese, Tomato, Onion, Black Olives, Sour Cream, Picante Sauce

Chicken Burrito Supreme \$2.99
Refried Beans, Chicken, Lettuce, Cheese, Tomato, Onion, Black Olives, Sour Cream, Picante Sauce

The ExpressWay
NAPLES ENTERPRISES, INC.

Taco Salad

Beef Taco Salad Bowl \$4.99
Chips, Lettuce, Beef, Cheese, Tomato, Black Olives, Sour Cream & Picante Sauce

Chicken Taco Salad Bowl \$4.99
Chips, Lettuce, Chicken, Cheese, Tomato, Black Olives, Sour Cream & Picante Sauce

Sides

Nachos \$2.79
Chips, Cheese, Jalapenos

Nacho Supreme \$4.99
Beef/Bean, Chips, Cheese, Tomato, Onion, Black Olives, Jalapenos, Sour Cream, Salsa

Refried Beans \$1.49

Nacho Cheese 50¢

Seasoned Potato Rounds 32 ct. \$2.99

Add .75 for extra chicken or beef
Add .55 for all other extras






May 2022

April '22							June '22						
S	M	T	W	T	F	S	S	M	T	W	T	F	S
					1	2					1	2	3
3	4	5	6	7	8	9	5	6	7	8	9	10	11
10	11	12	13	14	15	16	12	13	14	15	16	17	18
17	18	19	20	21	22	23	19	20	21	22	23	24	25
24	25	26	27	28	29	30	26	27	28	29	30		

Sunday	Monday	Tuesday	Wednesday	Thursday	Friday	Saturday
1 SUNDAY SPECIAL! \$2.00 OFF DELI ROTISSERIE CHICKEN	2 BEEF TIPS & GRAVY SLOPPY JOES ASSORTED ENTREES CHICKEN WILD RICE SOUP	3 WALKING TACOS MINI TACOS PHILLY SANDWICH CHEDDAR BROCC SOUP	4 ASIAN ENTREES CHILI DOGS SALISBURY STEAK	5 PASTA ENTREES ROAST BEEF DINNER	6 SHRIMP & FISH DINNERS ASSORTED BURGERS TATER TOT HOTDISH CHEESEBURGER CHOWDER	7
8 SUNDAY SPECIAL! \$2.00 OFF DELI ROTISSERIE CHICKEN	9 TURKEY SUPREME MEATLOAF DINNER ASSORTED ENTREES CHICKEN WILD RICE SOUP	10 WALKING TACOS MINI TACOS TURKEY & DRESSING CHEDDAR BROCC SOUP	11 ASIAN ENTREES COUNTRY FRIED STEAK BBQ MEATBALLS	12 PASTA ENTREES ROAST BEEF DINNER	13 SHRIMP & FISH DINNERS ASSORTED BURGERS CHICKEN & STUFFING BAKE CHEESEBURGER CHOWDER	14
15 SUNDAY SPECIAL! \$2.00 OFF DELI ROTISSERIE CHICKEN	16 BEEF TIPS & GRAVY SLOPPY JOES ASSORTED ENTREES CHICKEN WILD RICE SOUP	17 WALKING TACOS MINI TACOS PHILLY SANDWICH CHEDDAR BROCC SOUP	18 ASIAN ENTREES CHILI DOGS SALISBURY STEAK	19 PASTA ENTREES ROAST BEEF DINNER	20 SHRIMP & FISH DINNERS ASSORTED BURGERS TATER TOT HOTDISH CHEESEBURGER CHOWDER	21
22 SUNDAY SPECIAL! \$2.00 OFF DELI ROTISSERIE CHICKEN	23 TURKEY SUPREME MEATLOAF DINNER ASSORTED ENTREES CHICKEN WILD RICE SOUP	24 WALKING TACOS MINI TACOS TURKEY & DRESSING CHEDDAR BROCC SOUP	25 ASIAN ENTREES COUNTRY FRIED STEAK BBQ MEATBALLS	26 PASTA ENTREES ROAST BEEF DINNER	27 SHRIMP & FISH DINNERS ASSORTED BURGERS CHICKEN & STUFFING BAKE CHEESEBURGER CHOWDER	28
29 SUNDAY SPECIAL! \$2.00 OFF DELI ROTISSERIE CHICKEN	30 BEEF TIPS & GRAVY SLOPPY JOES ASSORTED ENTREES CHICKEN WILD RICE SOUP	31 WALKING TACOS MINI TACOS PHILLY SANDWICH CHEDDAR BROCC SOUP	1 ASIAN ENTREES CHILI DOGS SALISBURY STEAK	2 PASTA ENTREES ROAST BEEF DINNER	3 SHRIMP & FISH DINNERS ASSORTED BURGERS TATER TOT HOTDISH CHEESEBURGER CHOWDER	4
5 SUNDAY SPECIAL! \$2.00 OFF DELI ROTISSERIE CHICKEN	6 TURKEY SUPREME MEATLOAF DINNER ASSORTED ENTREES CHICKEN WILD RICE SOUP	EVENING MEALS: MONDAY: SLOPPY JOES & 1 SIDE \$6.99, ALSO SERVING COOKS CHOICE HOT DISHES TUESDAY: SCALLOPED POTATOES & HAM WEDNESDAY: ASIAN ENTREES THURSDAY: SPICY CHICKEN SANDWICH & 1 SIDE \$6.99, ALSO SERVING BEEF TIPS FRIDAY: SHRIMP & FISH DINNERS \$7.99				



Pink Cart for Cancer

River View Sanitation is partnering with the Allina Health Cancer Institute @ NUMC to offer a **PINK GARBAGE CART** to RVS Customers –
New customers welcome!!

How it works: RVS customers call in to the RVS office 507-354-5355 to reserve a pink cart. A donation will be required.

RVS will match total donations up to \$20,000.

ANY businesses that want to join in donating please contact our office.

Checks written to: NUMC Foundation Memo: Pink Cart
Mail Checks to RVS: PO Box 338, New Ulm, MN 56073

RVS will exchange the carts on your normal garbage day, the week following receipt of your donation.

****65-Gal Carts ONLY**

****1 Pink Cart per customer**





GROW WITH US!



CONTACT
US
TODAY!

SPONSORSHIP OPPORTUNITIES!

Grandstand Events * Agricultural Education Opportunities
Free Kids and Senior Day Activities * Music
AND SO MUCH MORE!

Help Us Keep Our Free Fair ... **FREE!**

VOLUNTEER!

*Businesses * Community Organizations *

*Church & School Groups *

**INDIVIDUALS! **

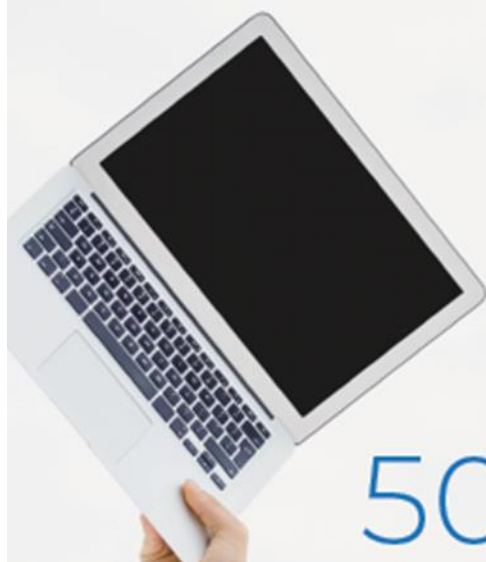
OPPORTUNITIES FOR ALL AGES!

Ticket sales * Bar sales
Event support * Groundskeeping
& so much more!



AUGUST 10 - 14TH, 2022

www.browncountyfreefair.com
info@browncountyfreefair.com



ARG!
GET TECH HELP AT
507-276-5059

TECH|UNLIMITED

YOUR ONE STOP FOR TECHNOLOGY NEEDS

techunlimitedllc.com



Apartments Available



Age 62 and Over

HUD Subsidized Rent Based On Income

Beautiful Social Areas

Visit Any Wednesday For Coffee Time At 2:00 p.m.

712 E. Cottonwood St., Springfield, MN

On the St. John's Circle of Care Campus

Call Robin at 507-723-4500



Entrepreneurs

*Come & Go
Coffee*

*For more information
Contact:*

Joe Stremcha
507-723-3500

Every 4th Wednesday of the month

7:30 a.m. – 10:30 a.m.

**Springfield Area
Community Center**

Kickstart Springfield Come and Go Coffee Group meets on the fourth Wednesday of each month. Business owners and entrepreneurs are invited to join. Please come and enjoy a cup of coffee and meet with fellow entrepreneurs and business owners.

This will be an excellent opportunity to network, meet with advisors and have 1-on-1 consultations with peers and members of the Kickstart Springfield Board.

The core focus of Kickstart Springfield is to create a vibrant economy by finding and supporting start-ups and local entrepreneurs including business startups to existing businesses that want to grow.



**Kickstart
Springfield**

**ENTREPRENEUR
HUB**



DISCOVER | HUNT | GROW

CITY OF SPRINGFIELD EMERGENCY ALERTING AND NOTIFICATION SYSTEM



Dear Residents,

The *City of Springfield* wants you and your family to be safe and informed during emergencies in our area. These may include public safety threats, dangerous weather, and traffic advisories. Information is key, and we strongly encourage you to sign up to receive text message alerts directly from the City of Springfield.

Registering for alerts is easy — simply text the Keyword below to **888777** and you'll be informed and instructed when necessary.

- **56087** (Springfield Community & Emergency Alerts)
- **CENTRAL2020** (Weekly Central Street Project Updates)
- **SNOWFALL** (Snow Removal Updates)

**TEXT THE KEYWORD TO 888777
TO SIGN UP FOR ALERTS**



powered



contact now.
507-227-8767
Michelle@simplycleanmn.com

NEW!
PUNCH CARD
LOYALTY PROGRAM

Professional CLEANING SERVICE

WHAT WE OFFER

- Whole house cleaning ✓
- Move-in/out cleaning ✓
- Office Cleaning ✓
- Carpet cleaning ✓

WE LOVE OUR LOYAL
CUSTOMERS!
Get 50% off your 5th
purchase.



Conflict? We don't have a conflict

Event information

Date

Monday, May 9, 2022

Add to Calendar

Time

8:30 – 9 a.m. Central time

Location

Webinar series

Contact

Christy Kallevig, University of Minnesota

Extension educator

kallevig@umn.edu or 320-429-0934

Day one of a five-day webinar series

Conflict can show up within teams and organizations in a variety of ways. Let's explore the sources and underlying signs that conflict is present and impacting your team.

Cost

Free

Registration

Register in advance. After registering, you will receive a confirmation email containing information about joining the session using Zoom.

Register for session



<https://extension.umn.edu/event/conflict-we-dont-have-conflict>

Springfield Chamber of Commerce

33 South Cass Avenue *PO Box 134

Springfield, MN 56087

507-723-3508

spfdchamber@newulmel.net

www.springfieldmnchamber.org

Denise Gicker

Executive Director

Monday- Friday 9 am – 1 pm



Chamber Chatter is a publication of the
Springfield Chamber of Commerce.
It is published monthly to keep members
and friends informed on events, activities,
and programs in and around the community.

Mission Statement – The mission of the Springfield Area Chamber of Commerce/CVB is to strengthen the business community and take a leadership role in promoting economic growth in a spirit of cooperation and team work.

Vision Statement – Promote economic growth through the recruitment and retention of quality businesses and industries that will contribute to the overall economic health of the community.

Provide the membership networking opportunities, referrals, internet promotion and other membership services to promote and enhance their business.

Develop and nurture relationships with local government and other community sectors to help facilitate the needs and interests of the business community and enhance the overall quality of life within the community.

Chamber of Commerce General Board of Directors 2022

President- Mike Granda- Farmers & Merchants State Bank

Vice President- Wendy Krier- Springfield Advance-Press

Dan Anderson- Springfield Market

Chrissy Boerboom- St. John's Circle of Care

Jill Riederer- City of Springfield Representative

Deb Miesen- Miesen's Color Center

Kayla Tibboel- SouthPoint Financial Credit Union

Deb Wahl- Massage & Bodywork by Deb Wahl