

# *CHAMBER CHATTER*



## *July 2022*

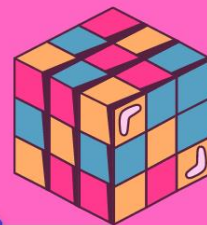
**August 6<sup>th</sup> – 14<sup>th</sup> Annual  
Springfield Chamber Golf Tournament**

\*Please share the Chamber Chatter Newsletter with your employees. The newsletter is also now available on the Chamber website at <https://springfieldmnchamber.org/chamber-chatter/>. It will also be posted on Facebook when the current newsletter is available on the Chamber Website.

If there are additional email addresses you would like me to add to make sure our newsletter is getting to all who are interested, please let me know by emailing me at [spfdchamber@newulmtel.net](mailto:spfdchamber@newulmtel.net) and I would be happy to add them to the email list.



# 14th Annual Springfield Chamber Golf Tournament



*'80's Theme*

*Open to the  
Public*

**Saturday, August 6th  
Springfield Golf Club**

18 Hole 4-Person Scramble

**\$75 Per Person**

(Includes 18 Holes of Golf, Supper, and Door Prizes)  
(cart not included)

**Advance Meal Tickets  
TACO BAR**

**(Available July 1-22): \$20**  
**Available at Chamber Office,  
F&M Bank, SouthPoint  
Financial Credit Union, &  
Springfield Advance-Press**  
**At the Door: \$25**

**11:30 AM Registration  
12 PM Shotgun Start  
5 PM - 6:30 PM Supper  
6:30 PM Games & Prizes**

**Registration Forms Available  
at the Chamber Office &  
Springfield Golf Club**

*Don't Miss Out  
on the Games &  
Drawings*



**Closest to the Pin**

**Longest Putt**

**Longest Drive Men/Women**

**Big Skins Game - 50/50 Payout**

**Mulligans - 2 Per Person \$5 Each**

**Chip in the Cube - 50/50 Payout**

**Heads & Tails Game**



# SPRINGFIELD AREA CHAMBER OF COMMERCE 14<sup>TH</sup> ANNUAL GOLF TOURNAMENT



*Open to the Public*  
*18-holes 4-person Scramble*  
*Saturday, August 6<sup>th</sup>*

(Cash lunch available at Springfield Golf Course Clubhouse)

Registration at 11:30 am

Shotgun Start at Noon

Supper 5:00 pm - 6:30 pm

Games and Prizes at 6:30 pm

**Registration:**

**Golf & Supper = \$75**

**Supper Only = \$20 Advance**

**Supper at the Door = \$25**

**Golf Registration Includes: Taco Bar**

**80's Themed Prizes!** Come in your 80's attire-Prize for Best Dressed Team

Name: \_\_\_\_\_

Mailing Address: \_\_\_\_\_

Daytime Phone: \_\_\_\_\_

**Please Check Appropriate Lines:**

\_\_\_\_\_ Supper ONLY (Taco Bar)

\_\_\_\_\_ Gluten Free (If needed)

(\$20 per person advance tickets)

\_\_\_\_\_ Golf and Supper (\$75 per person)

\_\_\_\_\_ I would like to be a sponsor (\$400 **Gold**, \$300 **Silver**, \$200 **Bronze**)

**\*\*Gold** receives four free entry fees; **Silver** receives two free entry fees; **Bronze** receives one free entry fee \*\*

\_\_\_\_\_ I will need a golf cart (cost NOT included in registration fee)

\*Contact the Springfield Golf Course at (507) 723-5888 to reserve your cart. \$25 paid to Springfield Golf Course

\_\_\_\_\_ I have my own golf cart

\_\_\_\_\_ I would like the Chamber to assign me to a team

\_\_\_\_\_ I have a team of the following players:

\_\_\_\_\_  
\_\_\_\_\_

I am unable to attend, but I would like to contribute \_\_\_\_\_ to the Springfield Area Chamber of Commerce and/or the Springfield Chamber Golf Tournament.

**Registrations Due July 22<sup>nd</sup> 2022**

**Return Registrations to:**

Springfield Area Chamber of Commerce  
Golf Committee  
33 South Cass  
P.O. Box 134

[spfdchamber@newulmtel.net](mailto:spfdchamber@newulmtel.net)  
(507) 723-3508

*\*Thank you for your support!*



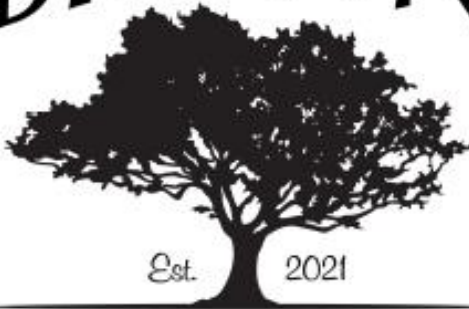




WINE *Pull*

**Thank You to our Wine Pull Donators!**  
**Your donation is greatly appreciated.**

**BROWN**



**TREE SERVICE**

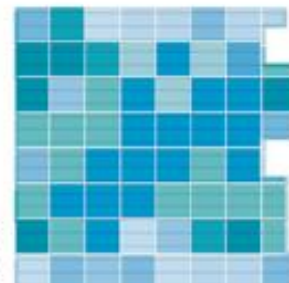


SPRINGFIELD — MORGAN — COMFREY — REDWOOD FALLS  
(507)723-2230 (507)249-3122 (507)877-2026 (507)644-2100

"For all your building needs: residential, commercial, agricultural and remodeling."



**Springfield  
Advance-Press**





*On The Big Cottonwood River*



**Ron & Sharon Sturm**

**Mike & Sandy Granda**

**Neil & Cheryl Neidt**



Thank you to everyone who attended, organized, supported, sponsored and donated their time and talent to Riverside Days!

See you in 2023!



## CONQUER THE CONES, SHOP SPRINGFIELD

Don't let the HWY. 14 road construction project

**DETOUR** 

you from shopping in Springfield

Springfield stores and restaurants  
are open and ready to serve you!



**WE'VE MOVED!**



**HAS A NEW  
ADDRESS!**



104 N MARSHALL AVE  
SPRINGFIELD MN 56087  
PHONE: (507) 227-8767

**Local. Loyal. Loans.**  
*Let's work together!*



Paul Pieschel



Daniel Olson



Clayton Beyer



Bracey Lerner

**F&M  
BANK**

Building Relationships.  
Making a Difference.

 Equal Housing Lender

Springfield | Morgan | [fmb-ebank.com](http://fmb-ebank.com)

Member FDIC



# REINER

## REAL ESTATE

Springfield, MN | [www.reinerre.com](http://www.reinerre.com) | Office: 507.723.5233 | Amanda Frank, Broker

**Check out a few of our newest listings!**

Visit [www.reinerre.com](http://www.reinerre.com) for a complete listing of our properties



### **314 S Paffrath Ave, Springfield - \$107,000**

Situated on a 75' x 142' lot close to the school and park, this single-story home offers a spacious living/dining room with hardwood floors, 3 main level bedrooms with updated carpeting, an eat-in kitchen with all appliances included, and a great amount of storage space throughout. Other amenities include a covered deck overlooking the backyard with many shade trees, a storage shed, and a single attached garage with access to the attic (additional storage space). New exterior paint in 2022.



### **307 S Hoyt Ave, Springfield - \$145,000**

This well-maintained 3-bedroom home is located close to the school and park and features updated windows throughout (installed 2017 & 2020), refinished hardwood floors, a beautiful sunroom addition in 2014 leading out to a maintenance-free deck with built-in seating, a large living room with lots of windows, an eat-in kitchen/dining room, & great built-in storage space. The basement has a drain tile system & offers great potential for additional bedrooms/finished sq. ft. The laundry is in the basement, but hook ups are available on the main level for main level living if desired. Attached single garage. Beautiful landscaping & flower beds in the peaceful backyard.



### **221 N Jefferson Avenue, Springfield - \$94,500**

Located on a corner lot across from the public school and one block from the city park, this spacious, well-maintained 4 bedroom, 2 1/2 bath home has an attached oversized double garage (insulated and heated) and features an open eat-in kitchen/dining room with patio doors leading out to the beautiful sunroom, a master bedroom with an adjoining updated master bathroom with a walk-in shower, and a main level laundry room with great storage space. The basement has a large family room with an egress window, office/playroom, the 4th bedroom with an egress window, a 1/2 bath, and a huge storage room!

**Inventory is LIMITED and there are many buyers on the hunt for a new home this summer! If you're thinking of selling, now is an ideal time!**

**Give us a call -723-5233 - so we can visit about the next step!**





**DRS. AKRE & CLARK**  
FAMILY EYE CARE



**50%  
Off**

**SUNGLASS FRAME  
WITH PURCHASE OF  
SUNGLASS LENSES .**

Cannot be combined with any other insurance plans or offers.  
Some exclusions apply. See an optician for details.

**1715 S. Broadway  
New Ulm, MN 56073  
507-354-8531**

**623 W Rock St.  
Springfield, MN 56087  
507-723-2020**



**DRS. AKRE & CLARK**  
FAMILY EYE CARE



Springfield: Est. 2019

## Over 70 Years

Of serving Brown County  
and surrounding areas

Monday 8 am - 5 pm  
Tuesday 9 am - 6 pm  
Wednesday 8 am - 5 pm  
Thursday 9 am - 6 pm  
Friday 8 am - 5 pm

1715 S. Broadway  
New Ulm, MN 56073  
**507-354-8531**

## The Mission Statement of Drs. Akre & Clark

Our health care team is committed to providing our patients with unsurpassed comprehensive eyecare.

We will provide personalized care, demonstrate sincere concern, and present meaningful education to each patient in order to enhance their quality of life.

We pledge the highest ethical standards and continued education to remain at the technological forefront of our profession.

623 W. Rock St  
Springfield, MN 56087  
**507-723-2020**





# Get paid for pumping gas

Earn **1.5% cash back** each time you pay for gas with a SouthPoint Visa Rewards credit card. Apply online at <https://bit.ly/SPFCUcc> or scan the QR code with your Smart Device camera.



\*APR-Annual Percentage Rate. Introductory rates as low as 0% APR applies for 6 months on balance transfers. Then, a low standard variable rate applies ranging from 13.00% – 18.00% APR. Interest rates are subject to change based on the type of loan, the collateral, loan to value, borrower's credit history, account relationship, and automatic payments. Rates disclosed are the lowest rates available at SouthPoint FCU. Other conditions may apply. Foreign Transaction Fee – 1.00% of each multiple currency transaction in U.S. dollars. 0.80% of each single currency transaction in U.S. dollars. 877-794-6712 | [www.southpointfinancial.com](http://www.southpointfinancial.com) | Federally Insured by NCUA | Equal Housing Opportunity

June 28th

-

August 13th

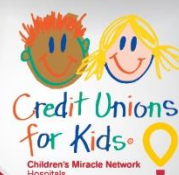
**Hearts  
\$10 -  
\$100+**



**Gillette Children's**  
Specialty Healthcare

**SouthPoint**  
Financial Credit Union

**Links  
\$1**



## Chain of Hearts Fundraiser

Stop by any branch of the credit union, put your name on a paper heart or link, and support Gillette Children's Specialty Healthcare.

You can also donate online at [www.southpointfinancial.com](http://www.southpointfinancial.com).

Gillette treats kids with disabilities and complex medical conditions in all Minnesota counties and beyond.



**SouthPoint**  
Financial Credit Union

Federally Insured  
by NCUA

**Helping these children is as easy as...**

- ♥ **Stopping by any of our branch locations or donate online**
- ♥ **Purchase a paper heart or link**

Over \$121,000 donated from SouthPoint members in the last 10 years! **THANK YOU!**



# A Nu You Massage Therapy

MASSAGE & WELLNESS



*Offering 60 & 90 min Reflexology Sessions*

Springfield, MN  
[www.anuyoumassagetherapy.com](http://www.anuyoumassagetherapy.com)  
507-723-9121

# A NU YOU MASSAGE THERAPY

Saturday  
Appointments  
Available

Call or  
Book Online  
[anuyoumassagetherapy.com](http://anuyoumassagetherapy.com)



# Inner Peace Acupuncture

Call to Book

612-702-6056



12 East Central St.  
Springfield, MN

Marnie Wing will be at  
A Nu You Massage  
Therapy on these dates.

July 15-16  
August 5-6  
August 26-27

# You're Invited!



150 YEARS  
Walking  
With  
God

ST. PAUL LUTHERAN CHURCH  
1870 - 2020

## Sunday, July 31, 2022

**St. Paul's is celebrating Community and 150 years!!**

The entire congregation and community is invited to a Community Picnic Celebration  
Sunday, July 31 from 5-7 p.m. on the church parking lot.

Free Food—burger or brat, beans, chips, root beer or water and an ice cream truck treat!  
Come anytime between 5-7 p.m. Enjoy the meal, special entertainment and visiting with  
your friends and neighbors—our community!

We would love to have you share some memories of St. Paul's that we will share during a  
social hour beginning at 4 p.m. Send your memories to St. Paul's church office at  
[stpaul\\_lutheran@hotmail.com](mailto:stpaul_lutheran@hotmail.com)





**American  
Red Cross**

**The need is constant.  
The gratification is instant.  
Give blood.™**

**redcrossblood.org | 1-800-RED CROSS**

# **St. Paul Lutheran Church**

**303 N Cass Ave~Springfield**

**Tuesday, August 9, 2022**

**8:00 a.m. – 1:00 p.m.**

**St. Paul Lutheran Church  
Katie Mueller  
507-723-5880  
Stpaul\_lutheran@hotmail.com**

© 2010 The American National Red Cross, Mid-America #0215 Oct. 2010



## Donate Your Gently Worn, Used and New Shoes To

St. Raphael Catholic School  
20 W. Van Dusen St.  
Springfield, MN 56087

Help us raise funds for our organization by  
donating your gently worn,  
used and new shoes!

And don't forget to ask friends, family,  
neighbors and co-workers to donate too!

Collected shoes are used to support micro-enterprise vendors.  
Micro-enterprises are small businesses in developing nations.  
They are typically operated by one person or family and  
friends, depending on size.

## WHERE & WHEN

St. Raphael  
Catholic School

May 23-August 8,  
2022

Drop Box is  
located in St.  
Raphael Church  
Gathering  
Space

### Contact

Raquel Kieper  
507-723-4137

[staphael@newulmtel.net](mailto:staphael@newulmtel.net)



# Looking for a new or redesigned WEBSITE?

We are offering a . . .

THIS SPECIAL GOOD THRU AUG. 31, 2022!

## SUMMER SPECIAL — \$79/mo

• UP TO FIVE PAGES • UP TO THREE EMAILS • RESPONSIVE SITE DESIGN • AND MUCH MORE!

### WEBSITES WE HAVE DONE —

Bar-M Horses — [www.barmhorses.com](http://www.barmhorses.com)  
BJ Video — [www.bjvideowindom.com](http://www.bjvideowindom.com)  
Blue Stem Ag — [www.bluestemag.com](http://www.bluestemag.com)  
Community Bible Church of Mt. Lake — [www.cbcmountainlake.com](http://www.cbcmountainlake.com)  
Cottonwood County Citizen — [www.windomnews.com](http://www.windomnews.com)  
Cottonwood County Fair — [www.cottonwoodcountyfair.org](http://www.cottonwoodcountyfair.org)  
Cottonwood County Soil and Water — [cottonwoodswcd.org](http://cottonwoodswcd.org)  
Dave's Custom Woodworking — [www.davescustomwoodworking.com](http://www.davescustomwoodworking.com)  
Duffy's Bar & Restaurant — [www.duffysmn.com](http://www.duffysmn.com)  
Eagle Ag — [www.eagleag.com](http://www.eagleag.com)  
Fairland Management — [www.fairlandmgmt.com](http://www.fairlandmgmt.com)  
Greater Blue Earth River Basin — [www.gberba.org](http://www.gberba.org)  
Gove Acres — [www.goveacres.com](http://www.goveacres.com)  
Holt's Cleaning Service — [www.holtscleaningservice.com](http://www.holtscleaningservice.com)  
Larson's Home Furnishings — [www.larsonfurniture.com](http://www.larsonfurniture.com)  
Lutheran Church of Our Savior — [www.oursaviorslutheran.net](http://www.oursaviorslutheran.net)  
Midwest Free Community Papers — [www.mfcp.org](http://www.mfcp.org)  
Mt. Lake Foundation — [www.mtlakefoundation.com](http://www.mtlakefoundation.com)  
Mt. Lake News — [www.mtlakenews.com](http://www.mtlakenews.com)  
North Heron Lake Game Producers — [www.nhlgpa.org](http://www.nhlgpa.org)  
Northwind Great Danes — [www.northwindgreatdan.es.com](http://www.northwindgreatdan.es.com)  
PM Repair of Windom — [www.pmrepairwindom.com](http://www.pmrepairwindom.com)  
Remick Foundation — [www.remickfoundation.com](http://www.remickfoundation.com)  
Royal Glass of Windom — [www.royalglassmn.com](http://www.royalglassmn.com)  
Ron's Electric — [www.ronselectricmn.com](http://www.ronselectricmn.com)  
Rushmore Industries — [www.rushmoreindustries.com](http://www.rushmoreindustries.com)  
Tri Parish Church — [www.triparishcfw.org](http://www.triparishcfw.org)  
Wellness & Vitality Chiropractic — [www.wellnessvitalitychiro.com](http://www.wellnessvitalitychiro.com)  
Westbrook Mutual — [www.westbrookmutual.com](http://www.westbrookmutual.com)  
Windom Area Foundation — [www.windomareafoundation.com](http://www.windomareafoundation.com)  
Johnson, Tibodeau, Bottin CPA's — [www.windomcpas.com](http://www.windomcpas.com)  
Windom Free Church — [www.windomfreechurch.org](http://www.windomfreechurch.org)  
Windom Zeds Volleyball — [www.windomzeds.com](http://www.windomzeds.com)

### ASK US ABOUT —

- Internet Marketing
- Search Engine Optimization
- Social Media Advertising
- Pay-Per-Click Advertising
- Email Marketing
- Websites

### NEWLY LAUNCHED WEBSITES —



Through this variety of marketing options, we can now help businesses, large and small, that are looking to broadcast their messages even more effectively through digital and print media!

**CITIZEN**  
Publishing Company  
Powered by  **arvig**  
Media

Call us today about this great offer!

**507-831-3455 or 800-658-2510**



Springfield Area Food Shelf update:

Food shelf has been very busy and clients and new families are returning to help them with grocery shopping. We hear many comments about the prices in grocery stores and how difficult it is to purchase some of these products.

We need more volunteers to help us with service days and twice monthly delivery. The food truck comes in 2 times per month. This would be a nice way to get service hours for the kids who need them.

You must be 18 years old to work on a service day with clients. Times are 5-7 pm on Tuesday nights and 9:30-1130 am Thursday mornings. Please consider donating 3 hours a month to your local food shelf.

If you would like to see what the local food shelf looks like, what type of product we offer. Call and leave a message on the food shelf phone 723-3663 or contact Shari Koll 507-227-0386. Thank-You!

# **KDOM**radio

1580 AM 103.1 FM

**Total Radio** -News -Weather -Sports



*"Your home for the  
Twins all season long"*

## **ED's Repair**

**SPRINGFIELD, MN  
723-5985**



May 1 – Sept. 30, 2022

# Sunglasses Style Event



Get a new look and protect your eyes with a new pair of sunglasses from Avera Medical Group Optometry.

**30% Off Sunglasses**  
**May 1 – Sept. 30, 2022**  
prescription or non-prescription

Offer good at Marshall, Redwood Falls, Springfield and Tracy locations.

No other discounts, coupons, vision plans or insurance will apply.

**Avera**   
**Medical Group**

[Avera.org/Marshall](https://Avera.org/Marshall)

ETIC/9452



**417 West Rock Street  
Springfield, MN 56087  
507-496-1556**



**Appliances • Plumbing & Drain  
Heating & AC • Flat Roofing**

# WELCOME TO THE SPEED OF NOW

Gig-speed fiber  
is coming!

[NuveraGigCities.com](http://NuveraGigCities.com)

**Nuvera**   
EXPERIENCE THE POWER OF CONNECTION



# **Springfield Tigers Clothing**

**[www.deluxeprint.biz](http://www.deluxeprint.biz)**



**Many more designs available  
Order online or contact me directly**



**Springfield • 507-723-9910**

**[www.deluxeprint.biz](http://www.deluxeprint.biz)**



*'Serving customers beyond connectivity'*



"Here at the LFN, we depend on  
MVTV Wireless every day!"

~ Lynn Ketelsen,  
Linder Farm Network

**320-564-4807**

[www.mvtvwireless.com](http://www.mvtvwireless.com)

- ✓ Robust, fully-supported network
- ✓ Local technical & customer support
- ✓ Community service built on integrity
- ✓ Referral Program
- ✓ Worry Free Connectivity with  
MVTV's Managed Wifi Service



**Full-Service Broadband Internet Provider**

# BROWN



Est. 2021

## TREE SERVICE

- ♦ Tree Removal
- ♦ Tree Trimming
- ♦ Stump Removal
- ♦ Storm Clean Up
- ♦ Free Estimates
- ♦ 24 Hour Emergency Service
- ♦ 15 Years Experience
- ♦ Fully Licensed & Insured

## Brown Tree Service, LLC

Douglas Brown 507-220-0672

Brigette Brown 507-220-0243

[browntreeservicemn@yahoo.com](mailto:browntreeservicemn@yahoo.com)

Springfield, MN



# Jack Larson Seeds

**Your local independent  
Dekalb - Asgrow Dealer**

*We have the staff and equipment  
to service all of your seed needs year round!*

Agronomic Support and Field Scouting  
Seed Delivery to your farm or field  
CRP & Cover Crop Seed and Drilling  
Field View™ Installation and Support

**Custom  
Soybean  
Drilling  
and Air Seeding**

Custom Hydro-Seeding  
Monitor Calibrations  
Planter Prescriptions  
Drone Services



**507-723-4302**

# Larson Crop Insurance

**Contact us with any  
Crop Insurance Questions**

Laurie Hoffbeck's cell ~ 507-829-8367

Jack's cell ~ 507-829-5189

Johnny's cell ~ 612-207-6542

Steve's cell ~ 507-828-3164

Evan's cell ~ 507-822-3545

Colin's cell ~ 507-430-0558

**Grow  
WITH Us**



**Available 24-7**

**[www.jacklarsonseeds.com](http://www.jacklarsonseeds.com)**



## Massage & Bodywork

Deb Wahl, CMT

507-626-0567

Call or Text for an Appointment  
[debs.wahl@yahoo.com](mailto:debs.wahl@yahoo.com)

A close-up, slightly blurred image of the American flag, showing the stars and stripes. The flag is waving, and the colors are vibrant. The stars are white on a blue field, and the stripes are red and white.

**Happy 4th of  
July!**

**Good Neighbor Thrift**

**Closed MONDAY**

**Tues.-Fri. 9-5**

**Sat. 9-12**



# SAWYER BROWN

at the 2022 Brown County Free Fair!  
August 12, 2022



[browncountyfreefair.com](http://browncountyfreefair.com)  
**\$30 Grandstand**  
**\$45 VIP\***

\*closest to stage, private bar and restrooms

tickets available @ [www.browncountyfreefair.com](http://www.browncountyfreefair.com)







**GROW WITH US!**



**CONTACT  
US  
TODAY!**

## **SPONSORSHIP OPPORTUNITIES!**

Grandstand Events \* Agricultural Education Opportunities  
Free Kids and Senior Day Activities \* Music  
AND SO MUCH MORE!

**Help Us Keep Our Free Fair ... FREE!**

## **VOLUNTEER!**

\*Businesses \* Community Organizations \*

\*Church & School Groups \*

\*\*INDIVIDUALS!\*\*

**OPPORTUNITIES FOR ALL AGES!**

Ticket sales \* Bar sales  
Event support \* Groundskeeping  
& so much more!



**AUGUST 10 - 14TH, 2022**

[www.browncountyfreefair.com](http://www.browncountyfreefair.com)  
[info@browncountyfreefair.com](mailto:info@browncountyfreefair.com)



# Set Up Your Future While earning 3.75%

Grow your money at a safe and steady pace – with a guaranteed interest rate for two years.<sup>1</sup> A Thrivent Security One fixed annuity ranging from \$50,000 to \$99,999 offers you:

- A guaranteed interest rate for two years.
- Tax-deferred growth.
- Protection of principal.

After two years, a new rate does apply. However, all of your subsequent rates will not change more than once every 12 months – and won't be less than the guaranteed minimum rate of 1.75%.<sup>1</sup> Invest in a long-term savings vehicle for your retirement. Invest in an annuity.



**Nancy S. Hansen, CFP®, CLU®, CAP®**  
**Financial Advisor**  
Redwood Area Group  
nancy.hansen@thrivent.com  
connect.thrivent.com/nancy-hansen  
507-723-5454

Certified Financial Planner Board of Standards, Inc. (CFP Board) owns the CFP® certification mark, the CERTIFIED FINANCIAL PLANNER™ certification mark, and the CFP® certification mark (with plaque design) logo in the United States, which it authorizes use of by individuals who successfully complete CFP Board's initial and ongoing certification requirements.

<sup>1</sup>Rates are current as of 6/1/2022 and are subject to change at any time.

Interest rate for new Security One contract is guaranteed for two years from the premium receipt date. Interest rates on new premiums are subject to change at any time.

Guarantees based on the financial strength and claims paying ability of the issuer.

Surrenders or partial surrenders from this annuity are subject to surrender charges in the first seven contract years starting at 7% in the first year and decreasing 1% each year until it becomes 0% in year eight. These surrenders are subject to income taxation and in addition, earnings distributed prior to age 59½ may be subject to a 10% federal penalty tax.

Thrivent is the marketing name for Thrivent Financial for Lutherans. Insurance products issued by Thrivent. Not available in all states. Licensed agent/producer of Thrivent. Thrivent.com/disclosures.

If you would like a free buyer's guide for more details, please call 800-847-4836.

Contract Forms: A-AS-SPDA (04) Series, A-AS-SPDA ID (04), A-AS-SPDAN TX (06), A-AS-SPDAB TX (06), A-AS-SPDANI WA (04), A-AS-SPDABI WA (04)

© 2021 Thrivent | All rights reserved.



## Redwood Area Group



### Get to know Money Canvas™

Money Canvas can help you create more breathing room in your finances. Over three online coaching sessions with a Money Canvas™ Guide, you can form healthier budgeting, saving and spending habits—so you can free up more money for your financial priorities.

- **Take control of your money:** Learn a simple way to create and follow a budget, so you can spend more mindfully.
- **Boost your savings:** Take small steps to trim expenses that add up to more savings over time.
- **Build greater confidence:** Learn financial concepts and try out new behaviors in a friendly, judgment-free zone.

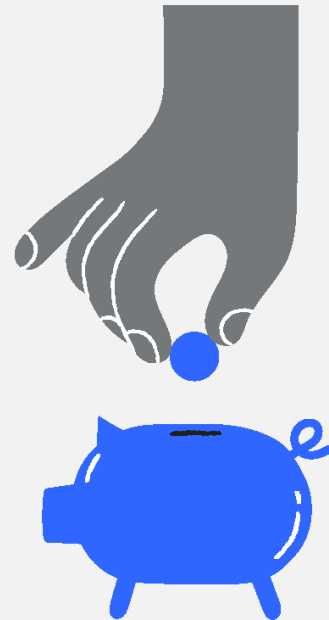


Let's connect

[thrivent.com/redwoodarea](http://thrivent.com/redwoodarea)

#### Springfield office

12 W. Central, Springfield, MN 56087  
507-723-5454



**Grain States LLC**  
Quality Millwright, Piping And Erection Services

**Michael Wendt**  
President

Cell 507-220-3436  
Office/Fax 507-723-8185  
E-mail [grainstatesllc1@gmail.com](mailto:grainstatesllc1@gmail.com)  
38790 E Cottonwood St  
Springfield, Mn 56087







## **Now Accepting Leadership Applications for 2022-2023**

*The Bridging Brown County Leadership Program is designed to help current and emerging leaders in your work place understand the unique dynamics of Brown County, and the role leadership plays in building healthy, connected communities.*

**Cost: \$400 per participant (Scholarships are available)**

**This includes:**

*Nine full day sessions, September-May (One Session per month)  
Leadership courses led by University of Minnesota Extension educators from the University of Minnesota Center for Community Vitality.  
County wide tours, meals, and workbook materials.*

**For more information or to apply:**

**507-354-6512 or [bridgingbrowncountydiretor@gmail.com](mailto:bridgingbrowncountydiretor@gmail.com)**

## United Way Backpack Project SCHOOL SUPPLIES NEEDED!

During the month of July  
**DONATION BOXES**  
can be found at:

- Farmers & Merchants Bank
- Nuvera
- Springfield Public Library
- SouthPoint Financial Credit Union
- United Methodist Church
- St. Johns Lutheran Church
- St. Paul Lutheran Church
- Mayo Clinic Health System

*Help children in need succeed, donate school supplies.*



## Stuff the Backpacks SCHOOL SUPPLY DRIVE

### WHAT WE NEED:

- Crayola 24 Count Crayons
- Crayola Broad Tip Markers
- Crayola Colored Pencils
- **Glue Sticks**
- Large Pink Erasers
- Pencil Top Erasers
- Pencil Bags & Boxes
- Fine Tip Sharpie Markers
- Dry Erase Markers
- Composition Notebooks
- Fiskars Kid Scissors
- Spiral Notebooks
- 2-Pocket Folders
- Hand Sanitizer
- Highlighters
- #2 Pencils
- **Facial Tissue**
- Scotch Tape



A Community Project of the United  
Way of Brown County Area Inc.

July Backpack news release

### School Supplies Needed

School bells seem like a long way off but United Way of Brown County, in partnership with Alliance, is already working to help families get their kids backpacks filled for school. It takes a lot of money to fill a backpack and United Way knows that some families struggle to get this done.

Letters were sent out to over 450 families throughout Brown County whose families qualify for the free lunch program. United Way staff said they had a great response last year from people who dropped off supplies at the many donation boxes we had placed throughout the county. We hope to see lots of donations again this year. To give you an idea of how much is needed, last year we collected 5600 pencils, 760 spiral notebooks, 770 dry-erase markers, 500 boxes of Kleenex, 300 highlighters and much more!

Comfrey and Springfield donation boxes can be found at F & M Bank, Allina Health Springfield Clinic, SouthPoint Financial Credit Union, Church of St. Paul, New Hope Lutheran Church, and Triumph State Bank. A suggested list of supplies is on each donation box as well as on the United Way website ([www.unitedwaybrowncountyrarea.org](http://www.unitedwaybrowncountyrarea.org)). Only new, unused items are needed.

If you want to help kids be excited to start school because they have a new backpack filled with supplies on their school's list, consider putting crayons, markers, highlighters, hand sanitizer and much more in a donation box near you. Monetary gifts can also be sent to United Way Backpack Project, PO Box 476, New Ulm, MN 56073.



# POPCORN WAGON 2022

## Schedule

Saturday, May 28, 10:00-5:00 (Memorial Day Weekend)

Saturday, June 25, 10:00-5:00 (Autofest)

Saturday, July 16, 10:00-5:00 (Bavarian Blast)

Friday, July 22, 10:00-5:00 (Crazy Days)

Saturday, July 23, 10:00-8:00 (Crazy Days)

Friday, August 19, 10:00-5:00 (US/Dakota War Commemoration)

Saturday, August 20, 10:00-5:00 (US/Dakota War Commemoration)

Saturday, September 24, 10:00-5:00 (Popcorn Wagon Blast)

Saturday, October 8, 10:00-5:00 (Oktoberfest)

Saturday, October 15, 10:00-5:00 (Oktoberfest)

Part of New Ulm's history since 1914, the popcorn wagon is located in front of the Museum at 2 N. Broadway. All proceeds benefit the Brown County Historical Society.



## Vintage Auto Photo Opportunity

The Brown County Historical Society welcomes all car enthusiasts to a photo opportunity at the newly restored gas pumps at 12 North Broadway in New Ulm. You may take photos of your vehicle at any time convenient for you. The pumps are lighted during the evening hours. Free will donations may be left in the on-site donation box, and will be used toward additional renovations planned for the vintage gas station. Your support of the Brown County Historical Society is appreciated.



If you would like to share your photos with the BCHS, please email them to: [education@browncountyhistorymn.org](mailto:education@browncountyhistorymn.org). For further information call 507-233-2621.



# **Brown County Historical Society**

**presents:**

## **Lunch and a Bite of History**

**Featuring:**

### **“Wilhelm Pfaender - The Grand Old Man of New Ulm”**

**Presented by George Downs**



**Thursday, July 7th from 12:00pm-1:00pm**

**Brown County Museum Annex**

**12 N. Broadway, New Ulm**

**Free Admission**

**Reservations required, email or call:**

**[education@browncountyhistorymn.org](mailto:education@browncountyhistorymn.org)**

**(507) 233-2621**





See us for your advertising and printing needs,  
**and much more!**

- Gift Subscriptions
- Photo Reprints
- Full Color Copies
- Return Address Labels
- Letterhead
- Business Cards
- Post Cards
- Flyers
- Laminating  
2x3" – 11x17"
- Custom stamps
- United States Flags  
3x5' or 4x6'

*Springfield*  
**Advance-Press**

13 S. Marshall Avenue | 507-723-4225



**CLEMENTS LUMBER**  
INC.

<b>SPRINGFIELD</b> (507) 723-2230	<b>REDWOOD</b> (507) 644-2100
<b>MORGAN</b> (507) 249-3122	<b>COMFREY</b> (507) 877-2026



Clements Lumber is a Valspar Dealer.  
For all your paint needs!



JULY

# Deli Specials

**The ExpressWay**  
STAPLES ENTERPRISES, INC.

www.expresswaystores.com

## Any Large Specialty Pizza

Save \$2.00

Enjoy A Pizza Tonight?

**\$14.99**  
Reg. \$16.99



**New!**

Pork Fritter Sandwich



Save \$1.00

**\$2.99**

Reg. \$3.99

*Made Fresh*  
Chicken Strips  
3 Count



Save 50¢

**\$4.49**

Reg. \$4.99

*Always Fresh at*  
**ExpressWay!**

## Try Our New Expressway Coffee

**Fresh Brewed Bean to Cup**

Breakfast Blend,  
Columbian Supreme,  
Decaf, French Roast,  
or Highlander Grog

**99¢**

20 oz. Cup  
Reg. \$1.59

Save 60¢

**Breakfast Burritos**  
All Varieties

Save 60¢

**\$2.99**

Reg. \$3.59



**New!**

Save 30¢

**Talerico Martin Donut Holes**

Vanilla, Blueberry,  
Devils Food

7 oz. Cup

**\$2.29**

Reg. \$2.59





# JULY Specials

**ExpressWay**  
STAPLER ENTERPRISES, INC.  
www.expresswaystores.com



**Giant Sunflower Seeds**  
5 oz. Bag  
Bacon Ranch, BBQ,  
Pill Pickle & Salted

Buy 2  
Save \$2.98  
**2 \$4**  
or \$2.00 each



**Standard Size  
Mars  
Candy Bars**

Snickers, Milky Way,  
3 Musketeers, M&M's

Buy 2  
Save 38¢  
**2 \$3**  
or \$1.50 each

**Wiley Wallaby  
Fruitragous  
Lioorice**

6-8 oz. Bag  
Original, Black,  
Watermelon, Green Apple

Buy 2  
Save \$1.98  
**2 \$6**  
or \$3.00 each



**Hostess  
Snack Cakes**

3-4 oz.  
S'mores Oupcake, Tropical Blast,  
Twinkie, Chocolate Oupcake,  
Twinkie, Lemon Bundt Cake,  
Strawberry Cheesecake Bundt Cake

Save 60¢  
**\$1.99**  
Reg. \$2.59

**Pringles  
Grab & Go**  
Original, Sour Cream Onion,  
Cheddar Cheese

Buy 2  
Save 98¢  
**2 \$3**  
or \$1.99 each



**Laffy Taffy  
Ropees**

.81 oz.  
Cherry, Sour Apple, Grape,  
Strawberry, Banana

Buy 2  
Save 18¢  
**2 \$1**  
or 59¢ each



**David  
Sunflower Seeds**

Original, BBQ & Ranch  
5.25 oz.

Buy 2  
Save \$1.18  
**2 \$4**  
or \$2.00 each



Buy 2  
Save 98¢

**San Luis  
Quesadilla**

Three Cheese  
Chicken & Cheese  
Pork Carnitas

**2 \$5**  
or \$2.50 each



**Cheez-Its Puff'd**

3 oz. Bag  
White Cheddar, Cheddar

Save 60¢  
**\$2.29**  
Reg. \$2.89



**Chex or Bugles**

Assorted Varieties  
3-3.75 oz. Bag

Buy 2  
Save \$1.58  
**2 \$4**  
or \$2.00 each



# Monday Special

## TACO SALAD

Large Bowl

**\$4.00** Reg. \$4.99

Beef or Chicken



# Wednesday Special

## TACOS

Hard or Soft Shell Tacos

**2 \$3** Reg. \$1.99

Beef or Chicken



# Friday Special

## WALKING TACOS

Regular Size

**\$3** Reg. \$4.79

Beef or Chicken



### Tacos

**Hard or Soft Shell Tacos**

**Beef** \$1.99  
Beef, Lettuce, Cheese, Picante Sauce

**Chicken** \$1.99  
Chicken, Lettuce, Cheese, Picante Sauce

**Hard or Soft Shell Supreme**

**Beef Supreme** \$2.49  
Beef, Lettuce, Cheese, Tomato, Onion, Black Olives, Sour Cream, Picante Sauce

**Chicken Supreme** \$2.49  
Chicken, Lettuce, Cheese, Tomato, Onion, Black Olives, Sour Cream, Picante Sauce

**Walking Tacos**

**Regular** \$4.79  
Meat, Cheese, Lettuce, Picante Sauce

**Supreme** \$4.99  
Meat, Cheese, Lettuce, Picante Sauce, Black Olives, Onions, Sour Cream, Tomato

**6 Pack Tacos** \$9.99  
Hard Shell Tacos or Soft Shell Tacos



### Burritos

**Bean Burrito** \$1.79  
Beans, Cheese, Onion, Picante Sauce

**Beef Burrito** \$2.99  
Beef, Cheese, Onion, Picante Sauce

**Beef/Bean Burrito** \$2.29  
Beef/Bean, Cheese, Onion, Picante Sauce

**Beef/Bean Burrito Supreme** \$2.99  
Beef/Bean, Lettuce, Cheese, Tomato, Onion, Black Olives, Sour Cream, Picante Sauce

**Chicken Burrito Supreme** \$2.99  
Refried Beans, Chicken, Lettuce, Cheese, Tomato, Onion, Black Olives, Sour Cream, Picante Sauce

### Taco Salad

**Beef Taco Salad Bowl** \$4.99  
Chips, Lettuce, Beef, Cheese, Tomato, Black Olives, Sour Cream & Picante Sauce

**Chicken Taco Salad Bowl** \$4.99  
Chips, Lettuce, Chicken, Cheese, Tomato, Black Olives, Sour Cream & Picante Sauce





### Sides

**Nachos** \$2.79  
Chips, Cheese, Jalapenos

**Nacho Supreme** \$4.99  
Beef/Bean, Chips, Cheese, Tomato, Onion, Black Olives, Jalapenos, Sour Cream, Salsa

**Refried Beans** \$1.49

**Nacho Cheese** 50¢

**Seasoned Potato Rounds** 32 ct. \$2.99

Add .75 for extra chicken or beef  
Add .55 for all other extras



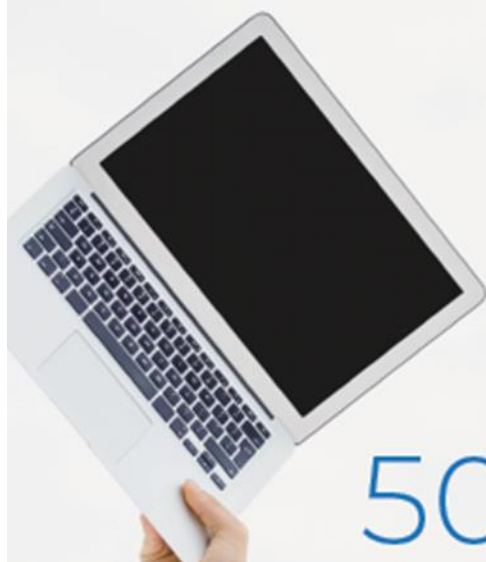


# July 2022

June '22							August '22						
S	M	T	W	T	F	S	S	M	T	W	T	F	S
				1	2	3	4						
5	6	7	8	9	10	11	12	13	14	15	16	17	18
19	20	21	22	23	24	25	26	27	28	29	30	31	

Sunday	Monday	Tuesday	Wednesday	Thursday	Friday	Saturday
26	27	28	29	30	1 SHRIMP & FISH DINNERS ASSORTED BURGERS TATER TOT HOTDISH	2
3	4 TURKEY SUPREME MEATLOAF DINNER ASSORTED ENTREES	5 WALKING TACOS MINI TACOS TURKEY & DRESSING	6 ASIAN ENTREES COUNTRY FRIED STEAK BBQ MEATBALLS	7 PASTA ENTREES ROAST BEEF DINNER	8 SHRIMP & FISH DINNERS ASSORTED BURGERS CHICKEN & STUFFING BAKE	9
10	11 BEEF TIPS & GRAVY SLOPPY JOES ASSORTED ENTREES	12 WALKING TACOS MINI TACOS PHILLY SANDWICH	13 ASIAN ENTREES CHILI DOGS SALISBURY STEAK	14 PASTA ENTREES ROAST BEEF DINNER	15 SHRIMP & FISH DINNERS ASSORTED BURGERS TATER TOT HOTDISH	16
17	18 TURKEY SUPREME MEATLOAF DINNER ASSORTED ENTREES	19 WALKING TACOS MINI TACOS TURKEY & DRESSING	20 ASIAN ENTREES COUNTRY FRIED STEAK BBQ MEATBALLS	21 PASTA ENTREES ROAST BEEF DINNER	22 SHRIMP & FISH DINNERS ASSORTED BURGERS CHICKEN & STUFFING BAKE	23
24	25 BEEF TIPS & GRAVY SLOPPY JOES ASSORTED ENTREES	26 WALKING TACOS MINI TACOS PHILLY SANDWICH	27 ASIAN ENTREES CHILI DOGS SALISBURY STEAK	28 PASTA ENTREES ROAST BEEF DINNER	29 SHRIMP & FISH DINNERS ASSORTED BURGERS TATER TOT HOTDISH	30
31	1 TURKEY SUPREME MEATLOAF DINNER ASSORTED ENTREES	<b>DELI HOURS</b> <b>MONDAY - SATURDAY 8:00 AM TO 6:00 PM</b> <b>SUNDAY 8:00 AM TO 5:00 PM</b>			<b>FRESH SALADS, CHICKEN, CHICKEN TENDERS, MASHED POTATOES, JOJOS, SANDWICHES AND MORE AVAILABLE EVERY DAY!</b>	





ARG!  
GET TECH HELP AT  
507-276-5059

**TECH|UNLIMITED**

YOUR ONE STOP FOR TECHNOLOGY NEEDS

[techunlimitedllc.com](http://techunlimitedllc.com)





# **Apartments Available**



**Age 62 and Over**

**HUD Subsidized Rent Based On Income**

**Beautiful Social Areas**

**Visit Any Wednesday For Coffee Time At 2:00 p.m.**

**712 E. Cottonwood St., Springfield, MN**

*On the St. John's Circle of Care Campus*

**Call Robin at 507-723-4500**



# Entrepreneurs

*Come & Go  
Coffee*

*For more information  
Contact:*

**Joe Stremcha**  
**507-723-3500**

**Every 4<sup>th</sup> Wednesday of the month**

**7:30 a.m. – 10:30 a.m.**

**Springfield Area  
Community Center**

Kickstart Springfield Come and Go Coffee Group meets on the fourth Wednesday of each month. Business owners and entrepreneurs are invited to join. Please come and enjoy a cup of coffee and meet with fellow entrepreneurs and business owners.

This will be an excellent opportunity to network, meet with advisors and have 1-on-1 consultations with peers and members of the Kickstart Springfield Board.

The core focus of Kickstart Springfield is to create a vibrant economy by finding and supporting start-ups and local entrepreneurs including business startups to existing businesses that want to grow.



**Kickstart  
Springfield**

**ENTREPRENEUR  
HUB**



DISCOVER | HUNTS | GROW



# CITY OF SPRINGFIELD EMERGENCY ALERTING AND NOTIFICATION SYSTEM



Dear Residents,

The *City of Springfield* wants you and your family to be safe and informed during emergencies in our area. These may include public safety threats, dangerous weather, and traffic advisories. Information is key, and we strongly encourage you to sign up to receive text message alerts directly from the City of Springfield.

Registering for alerts is easy — simply text the Keyword below to **888777** and you'll be informed and instructed when necessary.

- **56087** (Springfield Community & Emergency Alerts)
- **CENTRAL2020** (Weekly Central Street Project Updates)
- **SNOWFALL** (Snow Removal Updates)

**TEXT THE KEYWORD TO 888777  
TO SIGN UP FOR ALERTS**



powered





## Springfield Chamber of Commerce

33 South Cass Avenue \*PO Box 134

Springfield, MN 56087

507-723-3508

[spfdchamber@newulmel.net](mailto:spfdchamber@newulmel.net)

[www.springfieldmnchamber.org](http://www.springfieldmnchamber.org)

Denise Gicker

Executive Director

Monday- Friday 9 am – 1 pm



Chamber Chatter is a publication of the  
Springfield Chamber of Commerce.  
It is published monthly to keep members  
and friends informed on events, activities,  
and programs in and around the community.

**Mission Statement** – The mission of the Springfield Area Chamber of Commerce/CVB is to strengthen the business community and take a leadership role in promoting economic growth in a spirit of cooperation and team work.

**Vision Statement** – Promote economic growth through the recruitment and retention of quality businesses and industries that will contribute to the overall economic health of the community. Provide the membership networking opportunities, referrals, internet promotion and other membership services to promote and enhance their business. Develop and nurture relationships with local government and other community sectors to help facilitate the needs and interests of the business community and enhance the overall quality of life within the community.

## Chamber of Commerce General Board of Directors 2022

President- Mike Granda- Farmers & Merchants State Bank

Vice President- Wendy Krier- Springfield Advance-Press

Dan Anderson- Springfield Market

Chrissy Boerboom- St. John's Circle of Care

Amanda Frank – Riener Real Estate

Jill Riederer- City of Springfield Representative

Deb Miesen- Miesen's Color Center

Kayla Tibboel- SouthPoint Financial Credit Union

Deb Wahl- Massage & Bodywork by Deb Wahl