

CHAMBER CHATTER



November 2020

November 10th-12th - Holiday Open House

November 10th – December 12th – “A FEW OF OUR FAVORITE THINGS” promotion

December 17th – Virtual Chamber Bucks Drawing

*Please share the Chamber Chatter Newsletter with your employees. The newsletter is also now available on the Chamber website at <https://springfieldmnchamber.org/chamber-chatter/>. It will also be posted on Facebook when the current newsletter is available on the Chamber Website.

If there are additional email addresses you would like me to add to make sure our newsletter is getting to all who are interested, please let me know by emailing me at spfdchamber@newulmtel.net and I would be happy to add them to the email list.



Wine Pull

HELP SUPPORT THE
CHAMBER BY DONATING
BOTTLES OF WINE OR CASH
FOR THE WINE PULL AT THE
SPIRIT OF SPRINGFIELD &
BUSINESS OF THE YEAR
AWARDS BANQUET

contact the Chamber Office by
Tuesday, November 10th

Holiday Open House

November 10, 11, & 12

Events on Wednesday
November 11

5:30–7:30 p.m. Free hot chocolate and popcorn
served by Springfield Clinic-Allina Health @ Martha Anderson Park
6 p.m. – Tree Lighting @ Martha Anderson Park
6 p.m. - 7 p.m. – See Santa downtown on the firetruck.



*Days/Hours may vary by participating merchants.

Miesen's Color Center
Good Neighbor Thrift
MN She Shed
Springfield Clinic-Allina Health
F&M Insurance
Nuvera
Springfield Floral

SouthPoint Financial Credit Union
Springfield
Pink Swan Boutique
& Beauty Parlour
723 Consignment
MVT Wireless
Drs. Akre & Clark
Springfield Advance-Press

St. Johns Lutheran Home
The Maples
Thrifty White Pharmacy
Lang's Automotive
The Loft
Weelborg Chevrolet
Springfield Market
Massage & Bodywork
by Deb Wahl

Sadly, we will not be holding the Jingle Bell Ticket promotion this holiday season, BUT our new promotion, "A Few of Our Favorite Things" will be giving away \$1,500 in Chamber Bucks in the following amounts: 1-\$250, 5-\$100, 15-\$50. Starting Tuesday, November 10th and continuing through Sunday, December 12, 2020, we will be posting daily on our Chamber Facebook page, a photo entitled, "A Few of Our Favorite Things", which will spotlight one of our Chamber members. To be entered in the drawing, you simply need to "Comment" on the post. 33 of our Chamber members will be spotlighted, so the more "A Few of Our Favorite Things" posts you comment on, the more chances you have to win! One comment = one (1) drawing entry (limit one comment per person per post for entry into the drawing).

You can also increase your chances of winning by completing a entry form and submitting it to the Chamber Office or the Springfield Advance-Press. Entry forms will be published in the Springfield Advance-Press in the following weekly editions:

November 11th, 18th, 25th & December 2nd, 9th. One completed entry form = TWO (2) drawing entries. Completed entry forms MUST be dropped off at the Chamber Office, located at the East end of the Springfield Area Community Center or the Springfield Advance-Press by 1 pm on Friday, December 11, 2020.

A virtual drawing for the \$1,500 in Chamber Bucks will be held on Thursday, December 17, 2020 at 6 pm and will be broadcast live on our Chamber Facebook page.

Please see following sheet for more information including the rules.



A FEW OF OUR FAVORITE THINGS
Promotion Rules
November 10, 2020 thru December 12, 2020

1. The Springfield Area Chamber of Commerce Retail Board will be giving away **\$1,500** in Chamber Bucks in the following amounts: 1-\$250, 5-\$100, 15-\$50.
2. The promotion will run from Tuesday, November 10, 2020 to Friday, December 12, 2020. Starting November 10, 2020, the Springfield Area Chamber of Commerce will post on the Chamber Facebook page “A Few of Our Favorite Things” spotlighting one Chamber member each day.
3. To be entered into the drawing for Chamber Bucks:
 - a. Comment on the daily “A Few of Our Favorite Things” Chamber Facebook post. Limit one comment per person per post = 1 drawing entry. Only one comment per person, per daily post will be entered into the drawing.
 - b. All comments on the daily Chamber Facebook posts must be made by midnight on Friday, December 12, 2020.
 - c. Complete an entry form and submit to the Chamber Office or the Springfield Advance-Press. Entry forms will be published in the Springfield Advance-Press in the following weekly editions: November 11th, 18th, 25th & December 2nd, 9th. One completed entry form = 2 drawing entries. Completed entry forms **MUST** be dropped off at the Chamber Office, located at the East end of the Springfield Area Community Center or the Springfield Advance-Press by Friday, December 11th by 1 pm.

*** Must be 18 years of age or older to participate in this promotion.**

4. A virtual drawing for Chamber Bucks will be held at **Thursday, December 17, 2020 at 6 pm** and will be broadcast Live on the Springfield Chamber Facebook page. Need not be present to win.
5. The names of the Chamber Bucks winners will be posted in all participating Chamber businesses and published in the:
Springfield Advance Press,
Springfield Chamber Website www.springfieldmnchamber.org and
Springfield Chamber Facebook page - [Springfield Area Chamber of Commerce CVB](#)
6. **The Chamber Bucks winners must contact the Springfield Area Chamber of Commerce, 33 South Cass, PO Box 134, Springfield, MN 56087 by 1 pm on Wednesday, December 30, 2020 to claim their Chamber Bucks prize. All Unclaimed Chamber Buck prizes will be null and void after that date. Chamber hours are Monday – Friday, 9 am to 1 pm.**
7. To obtain a single drawing entry form without an accompanying purchase, send a self-addressed stamped envelope to the Springfield Area Chamber of Commerce, PO Box 134, Springfield MN 56087
8. Sponsors will provide on request of a State Agency a record of the names and addresses of all winners of prizes valued at \$100 or more, if request is made within one year of contest termination.
9. All decisions of the Springfield Area Chamber of Commerce shall be final.
10. For additional information contact: Springfield Area Chamber of Commerce, PO Box 134, Springfield MN 56087. Phone: 507-723-3508. E-Mail: spfdchamber@newulmtel.net.

A Few OF Our Favorite Things

Springfield Area Chamber of Commerce

Pick up and
Free Local Delivery
Available



Hours
Monday – Friday
9:00 am – 1 pm



33 South Cass Avenue
Springfield, MN 56087
(507) 723-3508
spfdchamber@newulmtel.net

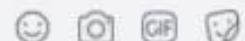
To be entered into the drawing for \$1,500 in Chamber Bucks,
comment on the "A Few of Our Favorite Things" post

Like

Comment

Share

Comment



Our Favorite Things



The Springfield Area Chamber of Commerce Retail Board will be giving away \$1500 in Chamber Bucks in the following amounts: 1-\$250, 5-\$100, 15-\$50.

View Springfield Area
Chamber of Commerce
Facebook page to
see this week's
featured businesses:

- * *Springfield Area
Chamber of Commerce*
- * *Nuvera*
- * *Springfield Golf Course*
- * *Miesen's Color Center*
- * *Springfield Floral*

Promotion rules will be posted on Chamber's Facebook page and website, Chamber Office and Springfield Advance-Press Office.

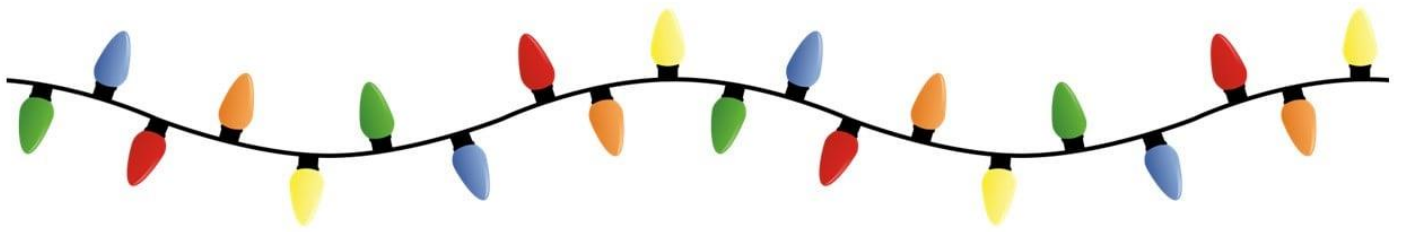
Name _____

Address _____

Phone Number _____

Entry forms can be dropped off at the Chamber office and the Springfield Advance-Press office until Dec. 11 at 1:00 p.m.

SAMPLE



Holiday Lighting Contest

“Best Decked Out Home”

Do you think your house has the best Holiday light display?

The Chamber has nominated the tenants at **The Maples** to be the judge of that!

**Judging will take place on Wednesday, December 9th AND
Thursday, December 10th at 6:30 pm.**



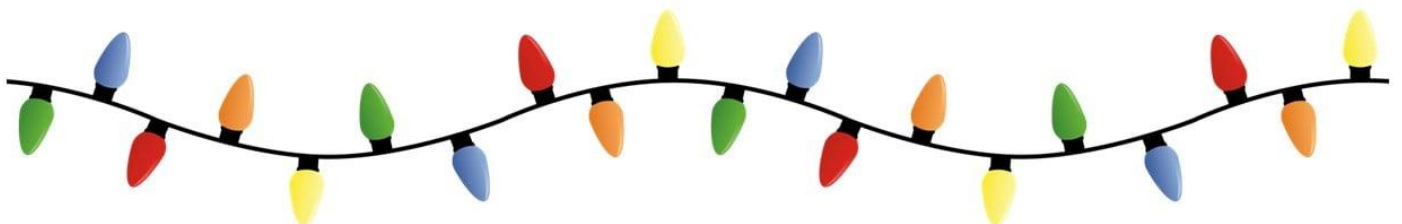
★ 1st place prize:
\$50 Chamber Bucks

★ 2nd place prize:
\$30 Chamber Bucks

★ 3rd place prize:
\$20 Chamber Bucks

Eligible homes must be within city limits.

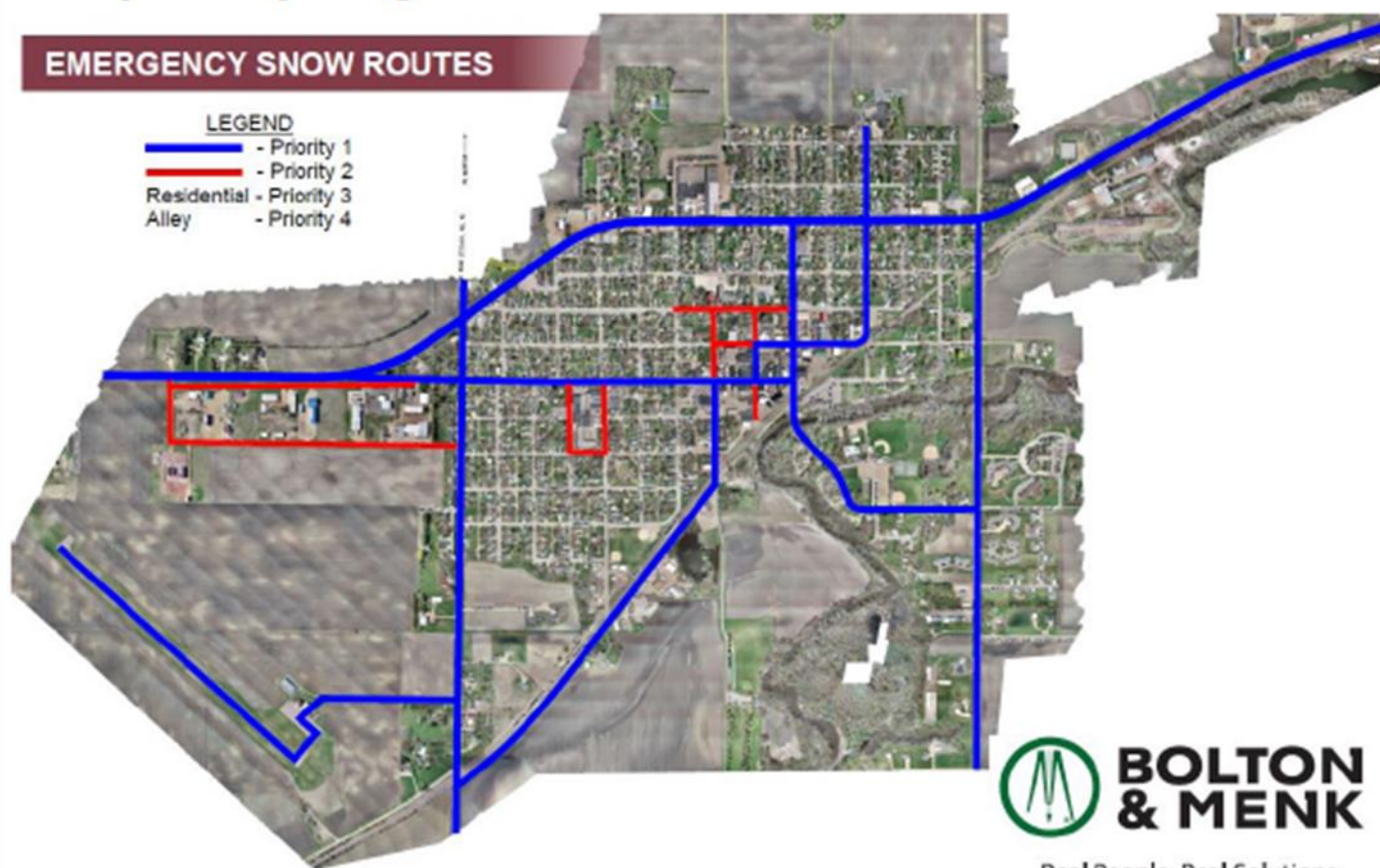
*Please make sure your lights are turned on the evening of December 9th AND
December 10th*



SAVE FOR FUTURE REFERENCE

City of Springfield Snow Removal Information

EMERGENCY SNOW ROUTES



**BOLTON
& MENK**

Real People. Real Solutions.

Springfield residents expect high-quality snow plowing that clears streets so that emergency vehicles and drivers like you can travel safely and park easily.

Snow removal is based on priorities and crews address the next task as able once prior tasks are complete. Please refrain from parking on Emergency Snow Routes until cleared curb to curb. This will be completed by 7am unless snowing continues.

Priority 1 ■ Emergency Snow Routes

Priority 2 ■ Schools & Business Districts

Priority 3 ■ Residential Streets

Priority 4 ■ Alleys (Subject to Roadway Conditions)

It is a misdemeanor for any person to remove snow from a residential driveway or boulevard sidewalk and place it on a public street. Boulevard sidewalks must be cleared within 24 hours after an accumulating snowfall event.

Vehicles must also be moved within 24 hours of a the accumulating snowfall event so that crews are able to finish clearing areas where previously parked.

Contact City Hall at 507-723-3500 with any snow removal questions.



20th Annual

Juried Art Show

Springfield Public Library

October 14th - November 25th

120 North Cass Avenue

Annual Board/Commission Positions Open Ad - 2021 Appointments

Interested in helping shape the future of Springfield? Join one of our various public boards/commissions! The City of Springfield greatly values the contributions of its residents in decisions and we are committed to recruit the best candidates to serve our community.

Submit a letter to the City Council/Charter Commission expressing interest in the position and your relevant experience. Letters of interest are due by Friday, December 4th at 12:00pm and positions will remain open until filled.

Attn: City Manager
City of Springfield
2 East Central Street
Springfield, MN

- **Airport Commission (1 position open).** Provides input related to matters of budgeting and overall Airport improvements and operations:
 - Meets as needed
 - Term is three years
 - Volunteer position
- **Charter Commission (6 positions open).** A body authorized by law and established for the purpose of drafting and submitting to the voters a newly created local government charter or revisions to an existing charter as well as provide appointment recommendations to the city council for its various boards and commissions.
 - Meets in January & as needed
 - Term is four years
 - Volunteer position
- **Community Facilities Board (3 positions open).** Shall maintain and enhance the physical facilities and the services available to the Springfield area in utilization of the Community Center, Parks, Pool, Campground, Walking Paths, Cable T.V. and other recreational facilities and actively pursue the development of recreational, educational, business, and community promotional programs which will utilize such facilities.
 - Meets the 3rd Tuesday @ 4pm every month
 - Term is three years
 - Volunteer position
- **Economic Development Authority Board (1 position open).** Shall carry out economic, housing, and industrial development and redevelopment within the city in accordance with such general policies as may from time to time be established by the City Council:
 - Meets monthly on the 2nd Thursday @ Noon, November – March, and 2nd Tuesday @ 4pm, April – October.
 - Term is three years
 - Volunteer position
- **Library Board (3 positions open).** Provides input related to matters of budgeting and programing within the Library Department:
 - Meets every other month on the 2nd Wednesday @ Noon
 - Term is three years
 - Volunteer position
- **Planning and Zoning Commission (1 position open).** Shall be responsible for enforcing and implementing the Zoning Ordinance of the City and for establishing an orderly plan for the development or redevelopment of all areas within the City:
 - Meets monthly on the 4th Monday @ 5:30 or 7pm

- Term is five years
 - Volunteer position
- **Police Commission (1 position open).** Powers and duties as the City Council deems advisable in relation to the operation of the police department and its personnel:
- Meets as needed
 - Term is 3 years
 - Volunteer position
- **Public Utilities Commission (1 position open).** Shall manage the department of Public Utilities:
- Meets monthly on the 4th Tuesday @ 8:30am
 - Term is three years
 - Paid position (\$2,385 annually)
- **Rural Entrepreneurship Venture Leadership Team (7 positions open).** The City of Springfield will begin a three-year journey organizing and executing an economic strategy to grow our local economy in partnership with the Southern Minnesota Initiative Foundation.
- Meets monthly (TBD)
 - Term is three years
 - Volunteer position



City of Springfield, Minnesota

2m · 🌐



City of Springfield Outdoor Dining Grant Program awards \$3,333.00ea. to the Springfield Golf Club, RC Sports Bar & Grill Inc. (Outlaws), & The Garage/Springfield Lanes to expand outdoor dining service offerings due to the COVID-19 pandemic.

The program will create a lasting improvement that will provide additional accommodations for social distancing as well as extend beyond the COVID-19 pandemic once completed.



JENSEN

Buick • GMC • Cadillac



GMC



Hwy 15. South • New Ulm, MN
(507) 233-8810 • (800) 967-3390
www.JensenMotors.com



Massage & Bodywork

Deb Wahl, CMT

507-626-0567

Call or Text for an Appointment
debs.wahl@yahoo.com

BROWN COUNTY HISTORICAL SOCIETY

2 North Broadway Street, New Ulm, MN 56073

PRESS RELEASE

For Immediate Release

Date: October 20, 2020

Brown County Historical Society, 2 North Broadway Street, New Ulm, MN 56073

Contact: Kathleen Backer, director@browncountyhistorymn.org – 507-233-2618

Brown County Historical Society Exhibit Opening: *Batter Up! Baseball in Brown County*

The Brown County Historical Society presents a digital exhibit, *Batter Up! Baseball in Brown County*. Due to the continuing COVID-19 pandemic, the Brown County Museum remains closed to the public. In order to continue displaying Brown County's history, the BCHS has designed a digital exhibit on its website.

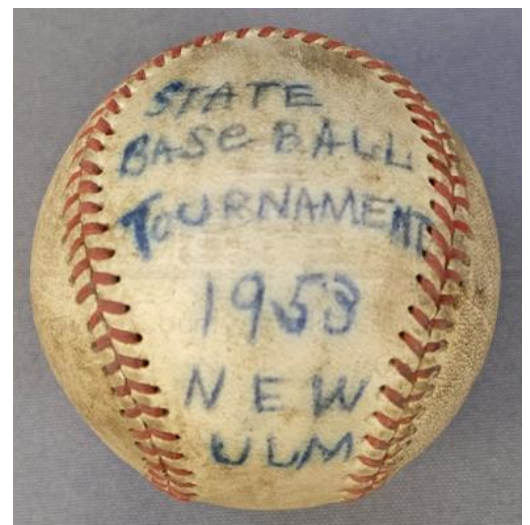
In celebration of 150 years of recorded baseball in Brown County, the BCHS presents *Batter Up! Baseball in Brown County*. *Batter Up!* is a history of the hold baseball has had on the people of Brown County since 1871, when the first known game of baseball was played within the county. Brown County's love for baseball was well established by 1900, and its passion grew until the 1950s when amateur baseball in Minnesota peaked. After 1960, Minnesota found new interest in the Minnesota Twins, but in Brown County, the amateur baseball tradition has continued since that first game in 1871.

The exhibit covers a broad base of subjects like: The Origin of Baseball, Baseball Becomes America's Pastime, Brown County and the Major Leagues and Base Ball: A Game for All. Sub-categories under A Game for All include: Women's Baseball in Minnesota, Native American's in Baseball and Youth Baseball.

The exhibit may be viewed on the BCHS website, browncountyhistorymn.org. The digital exhibit includes images from the BCHS archives and artifact collection, a summary of baseball history and short bios of specific Brown County athletes.

For more information on the exhibit, please contact the BCHS at 507-233-2620.

###



BROWN COUNTY HISTORICAL SOCIETY

2 North Broadway Street, New Ulm, MN 56073

PRESS RELEASE

For Immediate Release

Date: October 21, 2020

Brown County Historical Society, 2 North Broadway Street, New Ulm, MN 56073

Contact: Kathleen Backer, director@browncountyhistorymn.org – 507-233-2618

Brown County Historical Society Features the “Art of Remembering, Images of the U. S. Dakota War of 1862” Program

The Brown County Historical Society presents the “*Art of Remembering, Images of the U. S. Dakota War of 1862*”. This three-part series examines artistic forms of interpreting the past. The program can be viewed on the BCHS website.

The three segments include examination of the Chief Sleepy Eye Statue, The Milford Monument and the The Defense of New Ulm painting. This program was produced for the 2012 commemoration of the 150th Anniversary of the U.S. Dakota War of 1862.

This three-part series is available on the BCHS website, browncountyhistorymn.org. This program was made possible by the Minnesota Arts and Cultural Legacy program with a grant from the Prairie Lakes Regional Arts Council.

For more information on the exhibit, please contact the BCHS at 507-233-2620.

###





HOLIDAY OPEN HOUSE

TUESDAY, NOV. 10 8:30 AM - 7 PM
 WEDNESDAY, NOV. 11 8:30 AM - 7 PM
 THURSDAY, NOV. 12 8:30 AM - 7 PM

20% OFF GIFTS & HOME DECOR*
 FONTANINI RETAILER

*excluding registries

**MIESEN'S COLOR CENTER
 SPRINGFIELD**



New!
 Fontanini LED Stable
 with USB charger



New Holiday Decor!



Allows you to display the stable anywhere without the need for an electrical outlet!

Apartments Available



Age 62 and Over

HUD Subsidized Rent Based On Income

Beautiful Social Areas

Visit Any Wednesday For Coffee Time At 2:00 p.m.

712 E. Cottonwood St., Springfield, MN

On the St. John's Circle of Care Campus

Call Robin at 507-723-4500





St. John Lutheran Home GrandKids and V.I.K. Club

Helping your child grow **intellectually, physically, emotionally** and **spiritually** into a well rounded member of our community.

Monday through Friday

6:45 a.m. to 5:30 p.m.

GrandKids

Ages 6 weeks - 5 years

V.I.K. Club

Before and after school care

More Information

(507) 723-3200

grandkids@sjlhome.com

201 South County Road 5

Springfield, MN 56087

www.sjlhome.com

Intergenerational Care

Located in St. John Lutheran Home, we are the only state-licensed intergenerational day care center in Brown County. The program has been **recognized nationally** as a leader in this specialized type of care.

Research shows

Children enrolled in intergenerational programs have **advanced social skills** compared to children in traditional day care. They learn to be **comfortable around older adults** and people of varying abilities.

Elders involved in intergenerational activities report **feeling happy, loved, younger and needed.**



A typical day

Each day children in our care interact with the residents of St. John's Circle of Care. Routine activities include reading, singing, creating crafts, and eating together. Special events like indoor beach parties and the annual Christmas program bring extra **joy to residents and children alike.**

Our classrooms

Children at GrandKids, 4 to K and V.I.K. Club receive age-appropriate care in one of five classrooms. The classrooms have recently been updated, enlarged, decorated and are full of fun and educational toys and games which enrich the children's lives.



SAVE THE DATE!

Help support St. John's Circle of Care Foundation



November 19th is the annual Give to the Max Day!

By choosing to donate on Give to the Max Day you will be making a huge impact at St. John's Circle of Care. Give online at www.give.mn.org or in person at St. John Lutheran Home in Springfield. Because of you St. John's has been able to continue its mission of enabling all who are within our Circle of Care the ability to Thrive Together!

Questions? Contact Lindsey Beyer- Foundation Director- 507-723-3205



ST. JOHN'S
CIRCLE OF CARE
— FOUNDATION —

CLEMENTS LUMBER
INC.

SPRINGFIELD (507) 723-2230	REDWOOD (507) 644-2100
MORGAN (507) 249-3122	COMFREY (507) 877-2026



**YOUR STORE
FOR QUALITY
BRANDS FOR YOUR
HOME, FARM &
OUTDOORS**

Automotive • Tools

Pet & Animal Health

Hardware • Farm

Home • Lawn & Garden

Plumbing • Electrical

Power Equipment
and More!



**Shop your
nearest
Runnings store
with 54
locations
or online
at runnings.com**

**1115 West Central St
Springfield, MN
507-723-6263**



**SHOW THIS
FOR
\$10 OFF**

Lund
PowerWashing

Servicing the Springfield and Redwood Falls Area. FREE QUOTES



We do driveways, sidewalks,
decks, patios, homes and
much more.

507-205-2580

Contact us today to change the look of your house.

-<https://lund-power-washing.business.site>

-<https://www.facebook.com/LUNDWASHING>

-LundWashing@yahoo.com



A REWARDING INVESTMENT. POWERED LOCALLY®

Earn a \$50 VISA® gift card for every 100 gallons of Cenex® products you buy!
November 1, 2020 through February 28, 2021.



To learn more contact:

Curty Meyers - 507.430.1884

Travis Wendt - 507.227.7119 Brooks Torke - 507.616.6958



Eligible lubricant products include: Irriflex® | Maxtron® DEO | Maxtron® Enviro-EDGE® | Maxtron® GL | Maxtron® THF+ | MP Gear Lube | Qwiklift® HTB® | Superlube 518® | Superlube TMS®

Eligible grease products include: Corn Head Grease | HD Moly Xtreme | Poly-Xtreme® | Maxtron® EP | Blue Gard® 500+™ | Fluid Gear Grease | Molyplex 500+ | ML 365® | Red Protect XT® | Maxtron® FS



OPEN:

Tuesday from 2-6

Friday from 2-6

Saturday 10-3

REINER

REAL ESTATE

Springfield, MN | www.reinerre.com | Office: 507.723.5233 | Amanda Frank, Broker

Check out a few of our listings!

Visit www.reinerre.com for a complete listing of our properties



515 Park Ave N, Springfield - \$179,500

This spacious home is located on a 149' x 195' lot on the north side of Springfield with a secluded backyard. The main level features a large family room addition with beamed arched ceilings, kitchen/dining room with appliances included, a full bathroom and a walk-in tub, a laundry room/back entry off of the garage, and great storage space throughout. The walk-out basement has a family room, bedroom and bathroom, and an 18' x 21' storage room. The rear deck overlooks the large backyard with great shade trees and plenty of space for garden areas. Double attached garage.



402 Marshall Ave N, Springfield - \$159,500

This incredibly clean and well-maintained property has a completely remodeled kitchen with center island, built-in seating area, tile backsplash, and stainless steel appliances, dining room with patio door leading out to the backyard, main level laundry, and remodeled full bath on the main floor. The upper level has a newly renovated (in 2020) half bath and three bedrooms. Updated windows, siding, and shingles. Beautiful landscaping and great backyard with large patio area. Detached triple garage (32' x 42') is insulated, heated, and cooled, and has a separate office area.



114 E Sanborn St, Springfield - \$89,500

This well-cared for home has an eat-in kitchen, living room with French doors, separate dining room with patio door leading out to the deck, family room in the basement with egress windows and a room that could easily be converted into a 4th bedroom, updated full bathroom, and a large front entry with an open staircase. Other features include a beautiful front porch, new landscaping throughout, and new trees in backyard. Storage shed is included. Detached single garage.

Winter is approaching and buyers are wanting to get settled in before the cold hits!
If you're thinking of selling, now is an ideal time! We offer virtual tours for buyers!
Give us a call -723-5233 - so we can visit about the next step!



For Immediate Release

For Additional Information, Contact:
Lori Pickell-Stangel - 507-354-6512
director@unitedwaybrowncountyarea.org

UNITED WAY TO HOLD POWER OF THE PURSE-DIGITAL BINGO FUNDRAISER TO BENEFIT LOCAL YOUTH:

The United Way's **Power of the Purse** event is going virtual! With your help, this fundraiser will supplement the United Way's budget to operate our programs for kids! That means funding for Imagination Library, Youth Activity Scholarships, Stuff the Backpacks, and Project Lunchbox weekend food program. This fun event will feature three consecutive "Live" Purse Bingo games for one of three designer purses. You can play all your package bingo cards for all three games. Each of your package chances = your name in the "Live" drawing to win fun designer purses, accessories, and or gifts! We will be drawing for prizes throughout the event, so stay online to win! Please join us and use the Power of the Purse to empower our local Brown County Youth!

For more information on our Power of the Purse-Digital Bingo event:

<https://www.unitedwaybrowncountyarea.org/Bingo>

If you are in need of resources, please go to: <https://www.unitedwaybrowncountyarea.org/partner-organizations>
You can also learn more about the United Way of Brown County Area at <https://www.unitedwaybrowncountyarea.org/>
Or call / email the United Way: UnitedWay@newulmtel.net or 507-354-6512

POWER of the PURSE



Virtual Purse **BINGO!**

Thursday, November 19th- Login @ 7pm

Virtual Fundraiser featuring "LIVE" online Bingo & Drawings!

Purchase ticket packages at:

UnitedWayBrownCountyArea.org

Click on the Power of the Purse Tab & pick your ticket package:

-\$50 Package: 10 digital Bingo cards & 20 drawing chances

-\$25 Package: 5 digital Bingo cards & 10 drawing chances

-\$15 Package: 2 digital Bingo cards & 3 drawing chances



The United Way's **POWER OF THE PURSE** event is going virtual! With your help, this fundraiser will supplement the United Way's budget to operate our programs for kids! That means funding for Imagination Library, Youth Activity Scholarships, Stuff the Backpacks, and Project Lunchbox weekend food program. This fun event will feature three consecutive "Live" Purse Bingo games for one of three designer purses. You can play all your package bingo cards for all three games. Each of your package chances = your name in the "Live" drawing to win fun designer purses, accessories, and or gifts! We will be drawing for prizes throughout the event, so stay online to win! So join us and use the Power of the Purse to empower our local Brown County Youth!

THANK YOU to our Business Sponsors:





NEWS RELEASE

For immediate release

Contact: Anna Vangsness

507-233-5620

Anna.vangsness@southpointfinancial.com

SouthPoint Financial Credit Union Release NetGiver to Members for 100% Impact

(Sleepy Eye, MN – October 19, 2020) – SouthPoint Financial Credit Union has a long-standing commitment to supporting the community and giving back to nonprofits. The latest addition to this commitment is NetGiver, a recently launched mobile giving app entirely focused on 100% fee-free donations. With online donation platforms growing in popularity, nonprofit organizations that employ these platforms incur platform and/or processing fees that can significantly reduce the amount the nonprofit receives each year – a total which can exceed 7% of the \$149 billion dollars given each year by individuals via credit or debit card.

SouthPoint members are now able to ensure that their complete donation reaches the desired nonprofit, with no fees to either the donor or the recipient. Through NetGiver, donations to nonprofits can have 100% impact. Brad Haynes, SouthPoint Sales Manager, believes that “giving is not just about the money you provided it’s about the difference you make in someone’s life. As we give, we ensure that others who may not have had the opportunities or support in life that many of us do, can utilize those moments to better themselves and those around them.”

Credit union leadership allows us to make a significant impact in the nonprofit giving space. We’re excited to have the credit union community behind NetGiver,” said Miriam Ackerman, co-founder of NetGiver. “This community is strengthened by its leaders. Leaders who take this commitment seriously, and with NetGiver they’re making a significant impact,” stated Ackerman.

“We’re extremely proud to offer NetGiver to our members and know that we can make a difference with 100% donations to our community,” said Haynes. NetGiver is available to members in both app stores and works seamlessly with a member’s SouthPoint Financial Credit Union account. “Many charities depend on every cent and because of our partnership with NetGiver we can ensure the communities that we serve and the charities in our 19 county footprint can receive every cent of those funds to continue their philanthropic missions.”

SouthPoint Financial Credit Union is a not-for-profit financial cooperative that distributes profits among members in the form of lower loan rates, fewer and lower fees and higher savings rates. Membership is open to all residents and businesses in a 19-county area of southern Minnesota. For additional information visit southpointfinancial.com, southpointhomemortgage.com, or call 877-794-6712.

About NetGiver: NetGiver is provided to members by their credit union as a secure and easy-to-use mobile app, where individuals make safe, secure, direct and fee-free donations to the charities they choose. NetGiver is a unique member acquisition and retention tool which delivers a branded credit union, feel-good experience to its users. Imagine the difference 7% can make. NetGiver is a Minneapolis based Credit Union Service Organization (CUSO), founded in 2019. For more information, visit netgiverapp.com.

###



Good Neighbor Thrift

Tuesday-Friday

11 am- 4 pm



Grain States LLC
Quality Millwright, Piping And Erection Services

Michael Wendt
President

Cell 507-220-3436
Office/Fax 507-723-8185
E-mail grainstatesllc1@gmail.com
38790 E Cottonwood St
Springfield, Mn 56087

Weelborg Chevrolet & New Ulm Junior Baseball
Association

Test Drive Fundraiser

Wednesday, Nov. 11th at 10-3pm



Help Raise
Up To
\$500



Halvorson Office Express

"Big Town Service, Small Town Friendly"

Office Supplies, Office Machines, Stationery & Paper Supplies
Computer Sales & Service/Repair Center - "Dell" Reseller
Printer Sales & Service
Computer Help & Tutoring by Appointment

4 West Central - Downtown Springfield
Monday thru Friday ** 12:30 - 5 pm

Rachelle Halvorson - Owner

(507)227-7090 cell or (507)723-5678 office

"For all your home & office supply needs"

NO MORE FEES **On your charitable donations**



MEET NETGIVER

SouthPoint is making your donations easy.

When using NetGiver provided by SouthPoint, you can give freely and confidently knowing that 100% of your donation reaches the charities of your choice!



SELECT YOUR FAVORITE CHARITIES

Support ALL of your favorite nonprofit 501(c)(3) organizations with ease from one app



ALL DONATIONS, ONE LOCATION

No more worrying about tracking your giving, NetGiver does it for you!



SAFE AND SECURE

Feel confident when you give. What matters to you matters to us, and your charitable gifts are supported by SouthPoint



IMAGINE THE DIFFERENCE

YOU CAN MAKE THE GREATEST IMPACT WHEN YOUR FULL DONATION REACHES THE CHARITY
Learn more today at <https://www.southpointfinancial.com/about-us/netgiver/>.

Federally Insured by NCUA | 877-794-6712 | www.southpointfinancial.com

TAKE AND BAKE APPLE PIES and APPLE CRISP FOR SALE



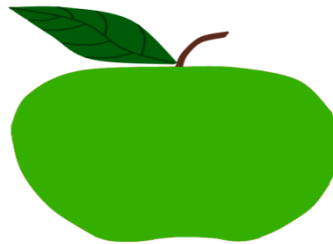
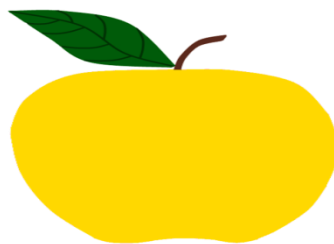
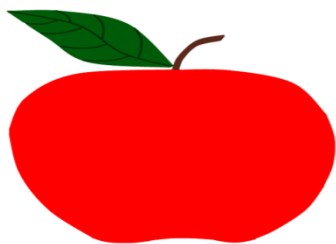
shutterstock - 101631652

\$5.00 A PIE

\$5.00 CRISP (8x8)

You can call the office and place an order for some – or stop in and pick one up!!! They will be available anytime the school is open until our apple supply is depleted!!!!

Call today – 723-4135.



Proceeds benefit St. Raphael School.

ST. RAPHAEL SCHOOL STUDENTS ARE SELLING ADVENT CALENDARS.

There are 2 different pictures available, each with a bible verse and chocolate candy behind every door.

Selling for \$5.00 each

To purchase, contact one of our students or the school office at 723-4135. Calendars will also be sold after masses.

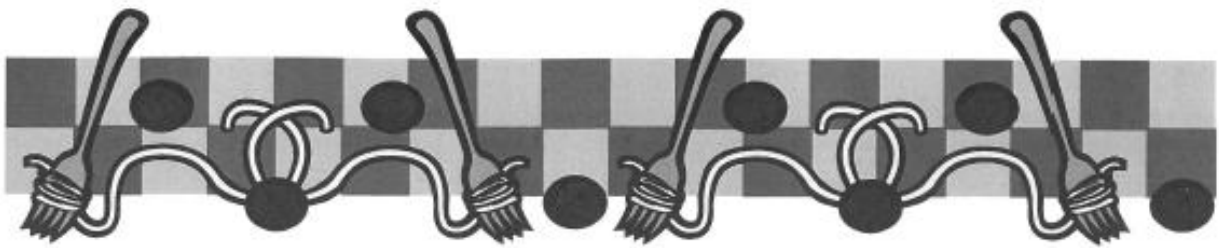


Peace on Earth | BB123



Shining Light | BB131

Thank you for supporting our school.



Drive Through "to go" Spaghetti Dinner

Wednesday, November 18, 2020

4:30 p.m. - 7:00 p.m.

St. Raphael School

Please use the drive-through lane on the North side of the school and pick up you meal to go from Door 8.

Take outs only. No delivery.

Cost of meal is \$6.00

All proceeds benefit St. Raphael School



+ Meet our specialty care team

Meet the specialty care providers who regularly see patients at Allina Health Springfield Clinic.



Joyce Tarbet, MD, FRCS
ORTHOPEDIC SURGERY

Available: Wednesdays



Keary Johnson, MD
OB/GYN

Available: Thursday mornings



Corinne (Cori) Jordan, MD
GENERAL SURGERY

Available: Thursday mornings



Ken Bentson, PA-C
NEUROLOGY

Available: 1st and 3rd Tuesday



MINNEAPOLIS
HEART
INSTITUTE

Teleheart **CARDIOLOGY**

Minneapolis Heart Institute
Available: 1st and 3rd Thursday

APPOINTMENTS 507-723-6201
LEARN MORE allinahealth.org/springfield

Allina Health 

November 2020 Deli Menu

Sun	Mon	Tue	Wed	Thu	Fri	Sat
Homemade Soups of The Day ↓ MONDAYS: Homemade chicken wild rice	2 Street Tacos Beef Tips & Gravy Sloppy Joes Baked Potato Bar	3 Walking Tacos Philly Sandwich French Dip Sandwich	4 Asian Entrees Country Fried Steak BBQ Meatballs Chicken Tender Melt	5 Pasta Entrees Roast Beef Dinner Rueben Sandwich Rachel Sandwich	6 Burger Day Swedish Meatballs Chicken Stuffing Bake	7
8 TUESDAYS: Homemade Broccoli Cheddar Soup	9 Turkey Supreme Street Tacos Baked Potato Bar Meatloaf Dinner Cheesy Potatoes	10 Walking Tacos Philly Sandwich Turkey & Stuffing Fish Sandwich	11 Asian Entrees Chili Dogs Fajitas Salisbury Steak	12 Pasta Entrees Roast Beef Dinner Country Bowls Grilled Ham/Cheese	13 Burger Day Tater Tot Hotdish Assorted Hot Sandwiches	14
15 WEDNESDAYS: Homemade Beef Stew	16 Street Tacos Beef Tips & Gravy Sloppy Joes Baked Potato Bar	17 Walking Tacos Philly Sandwich French Dip Sandwich	18 Asian Entrees Country Fried Steak BBQ Meatballs Chicken Tender Melt	19 Pasta Entrees Roast Beef Dinner Rueben Sandwich Rachel Sandwich	20 Burger Day Swedish Meatballs Chicken Stuffing Bake	21
22 THURSDAYS: Homemade Chicken Noodle Soup	23 Turkey Supreme Street Tacos Baked Potato Bar Meatloaf Dinner Cheesy Potatoes	24 Walking Tacos Philly Sandwich Turkey & Stuffing Fish Sandwich	25 Asian Entrees Chili Dogs Fajitas Salisbury Steak	26 	27 Burger Day Tater Tot Hotdish Assorted Hot Sandwiches	28
29 FRIDAYS: Homemade Chili	30 Street Tacos Beef Tips & Gravy Sloppy Joes Baked Potato Bar					

December 2020

Sun	Mon	Tue	Wed	Thu	Fri	Sat
<i>Homemade Soups of The Day ↓</i> MONDAYS: Homemade chicken wild rice		1 Walking Tacos Philly Sandwich French Dip Sandwich	2 Asian Entrees Country Fried Steak BBQ Meatballs Chicken Tender Melt	3 Pasta Entrees Roast Beef Dinner Rueben Sandwich Rachel Sandwich	4 Burger Day Swedish Meatballs Chicken Stuffing Bake	5
6 TUESDAYS: Homemade Broccoli Cheddar Soup	7 Turkey Supreme Street Tacos Baked Potato Bar Meatloaf Dinner Cheesy Potatoes	8 Walking Tacos Philly Sandwich Turkey & Stuffing Fish Sandwich	9 Asian Entrees Chili Dogs Fajitas Salisbury Steak	10 Pasta Entrees Roast Beef Dinner Country Bowls Grilled Ham/Cheese	11 Burger Day Tater Tot Hotdish Assorted Hot Sandwiches	12
13 WEDNESDAYS: Homemade Beef Stew	14 Street Tacos Beef Tips & Gravy Sloppy Joes Baked Potato Bar	15 Walking Tacos Philly Sandwich French Dip Sandwich	16 Asian Entrees Country Fried Steak BBQ Meatballs Chicken Tender Melt	17 Pasta Entrees Roast Beef Dinner Rueben Sandwich Rachel Sandwich	18 Burger Day Swedish Meatballs Chicken Stuffing Bake	19
20 THURSDAYS: Homemade Chicken Noodle Soup	21 Turkey Supreme Street Tacos Baked Potato Bar Meatloaf Dinner Cheesy Potatoes	22 Walking Tacos Philly Sandwich Turkey & Stuffing Fish Sandwich	23 Asian Entrees Chili Dogs Fajitas Salisbury Steak	24 Pasta Entrees Roast Beef Dinner Country Bowls Grilled Ham/Cheese		26
27 FRIDAYS: Homemade Chili	28 Street Tacos Beef Tips & Gravy Sloppy Joes Baked Potato Bar	29 Walking Tacos Philly Sandwich French Dip Sandwich	30 Asian Entrees Country Fried Steak BBQ Meatballs Chicken Tender Melt	31 Pasta Entrees Roast Beef Dinner Rueben Sandwich Rachel Sandwich		



417 West Rock Street
Springfield, MN 56087
507-496-1556

NOVEMBER MARKS 2 YEARS OF BUSINESS!

A lot of Great things have happened in the last two years! We would like to take the time and send out a sincere THANK YOU to our Customers. Without you we wouldn't be where we are today!

**From Everyone at Lang's Automotive,
Jason & Kayla Lang**

YOUR business clean,
sanitary & beautiful



IS NOW



JANITORIAL & WINDOWS

Add regular window cleaning services,
get the first month **FREE!***
(every 4, 6, or 8 weeks available)

GET YOUR EXTERIORS DONE BEFORE WINTER



Only until Dec 31, 2020!

We'll cheer you up with a bouquet of fresh cut flowers for
your lobby every month for the life of your contract.

Call or text (507) 227-8767 or email twinkletime4sure@gmail.com

• December, January, February • Interiors only.



Simply Clean did our window cleaning this fall.
More than one of our employees commented on
their professionalism and attention to detail
making sure the windows were sparkling and
DONE DONE. We were very pleased with the
finished product and can "SEE THE DIFFERENCE".
We recommend their services.

-- JULIE ANDERSON
VICE PRESIDENT
MATHIOWETZ CONSTRUCTION



**MVTV WIRELESS WOULD LIKE TO WISH OUR MEMBERS
A SAFE AND PROSPEROUS 2020 HARVEST**

- 
- ✓ **Truly Unlimited Data**
 - ✓ **Fast Local Support**
 - ✓ **Referral Program**
 - ✓ **No Contracts**
 - ✓ **Plans starting at just \$39.95**



MVTV
wireless
internet provider
320-564-4807
mvtvwireless.com



Springfield Area Food Shelf

Holiday Boxes Needs your help!

The Springfield Area Food Shelf will be providing Holiday Meal boxes again this year. The boxes contain ingredients for one holiday meal, given out both at Thanksgiving and Christmas.

The food shelf is looking for donations of the following items:

- Stuffing
- Canned gravy
- Any flavored jello
- Cool whip
- Cans of green beans
- Cream of Mushroom soup
- Cans of French fried onions
- Frozen pies

50 total of each item will be needed. 25 of each will be needed by October 26th for the Thanksgiving boxes. 25 of each will be needed by November 23rd for the Christmas boxes.

If you or your organization can help, please drop off any items you are willing to donate at Schwanke Engine building between 9-5 (M-F) or at the food shelf drop box at Springfield Market. For further information please contact Dawn Buddensiek at 507-220-0733.

Thank you!

FOOD SHELF UPDATE:

The Springfield Area Food Shelf would like to keep you updated on current procedures that are happening during this COVID-19 Pandemic. Food Shelf numbers have dropped this year since COVID began in March, 2020. We want to reassure all people that we are taking every precaution necessary to provide a safe delivery of food and products during this time. Second Harvest and the CDC are providing us with direction to make volunteers and clients safe.

The food shelf hours are Tuesday 5-7 pm and Thursdays 9:30-11:30. Clients are to call in during the day on Tuesday with your name, number, and number of people in your household. Call cell phone number Jan Schwanke(507-227-7387) with this information. For Thursdays you are to call in on Wednesday during the day. Volunteers then come to the food shelf and will call you to take your order and set it together while going thru the food shelf to tell you what is available and get your order completed. It is very important that you are in the parking lot when you do this so you are available to get the order loaded into your vehicle CURBSIDE PICK-UP.

If you prefer not to do your grocery order based on what is available then volunteers can put a box or bags together, of the basic food groups. If you only need certain things such as meat, produce and dairy that can be done also. You need to communicate your order to the person on the phone. Take just what you want and need. HOLIDAY BOXES WILL BE AVAILABLE IN NOVEMBER AND DECEMBER.

If transportation is difficult for you to come and get food then let us know that and we may be able to help you find someone. Call Jan Schwanke at above number.

Even though you may be getting extra funding at this time, we encourage you to still come to the food shelf and get what you need. We still have to place orders and we receive commodities such as milk, meat, ETC. If we do not get something that we have normally provided we will go to the local market and purchase products. Families of children going to school and who participate in the meal service twice a day, will qualify to come to the local food shelf and get what they need. Only information required is name, number in household, and phone number to reach you. We do not ask any financial information ever. No Forms are being signed by clients at this time due to COVID-19 pandemic.

Back-pack program is available and if you are unable to get your bag of food at your school, stop at the food shelf to pick up your food. Comfrey schools are participating at this time. Please contact Jan Schwanke with any further questions.

VOLUNTEERS NEEDED on delivery day which is the 2nd and 4th Tuesday in the morning. Jan Schwanke will usually send a text out to volunteers when delivery truck is getting close by Springfield. Call Jan Schwanke at above number.

Volunteers are also needed for service days. Shifts are approximately 2-2 ½ hours on Tuesday night or Thursday mornings. Call Jan Schwanke at above number.

The Springfield Area Food Shelf mailing address has changed to PO box 15, Springfield, MN 56087.

Web address: springfieldareafoodshelf.weebly.com

Feel free to contact Shari Koll 507-227-0386 or 507-723-6120 should you have any questions. You may also contact Jan Schwanke with questions at 507-227-7387.

Current Board of Directors: Shari Koll Chairman, Lewis Larson Vice Chairman, Becky Pautzke Secretary, Linda Carruthers Treasurer, Derek Tonn, Deb Rasett, Jane Evers, Lucy Potter, Pat Ryan, Cheryl Diede, Dawn Buddensiek, Jan Schwanke.

Jan Schwanke is the Food Shelf Manager/Volunteer Coordinator.



SMIF announces new Rural Entrepreneurial Venture communities

FOR IMMEDIATE RELEASE

OWATONNA, Minn., October 30, 2020 – **Southern Minnesota Initiative Foundation** (SMIF) recently accepted four communities to its **Rural Entrepreneurial Venture (REV) program**. Each of these communities will participate in the program, which supports long-term economic growth in towns of 5,000 or less in SMIF's **20-county region**, for a period of three years from 2021 – 2023.

The REV model is based on the **e2 Entrepreneurial Ecosystems** framework from **NetWork Kansas**, which provides guidance to communities for accelerating entrepreneurial activity. The framework has been utilized by communities across the country and provides a roadmap for sustainable entrepreneur-focused development. The inaugural REV cohort, which participated from 2018 -2020, supported the communities of Blue Earth, Lake City, Le Sueur, Spring Grove and a collaborative effort between Lanesboro and Spring Valley. A variety of approaches to economic growth have been implemented in these communities, including business succession programs and youth retention initiatives.

After a competitive application process, the following communities were selected for the 2021 – 2023 REV cohort:

- Montgomery (Le Sueur County)
- Springfield (Brown County)
- Wells (Faribault County)
- Mapleton, in collaboration with the additional Maple River School District communities of Amboy, Good Thunder and Minnesota Lake (Blue Earth/Faribault Counties).

Each group will develop a core leadership team made up of a variety of community stakeholders. The teams will meet regularly with coaches from SMIF, **Region Nine Development Commission** and **University of Minnesota Extension**. A variety of exercises and tools will be provided to the teams, including a mapping exercise to document the impacts of the program over time and a database for conducting an inventory of the existing entrepreneurs in each town.

“We are excited to work with these communities over the next three years as they explore different approaches to supporting entrepreneurs and economic growth through this program,” said Pam Bishop, Vice President of Economic Development at SMIF. “We know from our experience with the first cohort that the REV program will have a lasting impact on how these small towns approach economic development.”

For more information about the REV program, contact Pam Bishop at pamb@smifoundation.org or 507-214-7013. Read more about the long-lasting impact REV has made on small towns in the region in SMIF's **2020 Impact Report**.

Media Contact:

Katie Godfrey Demmer
Communications Director
507-214-7022
katieg@smifoundation.org



**Call In Orders
Welcome!
507-723-5721**

Hours
10:00 am - 8:00 pm
Monday - Sunday

Name _____

Burritos

- ☐ Bean Burrito (Beans, Cheese, Onion, Picante Sauce) \$1.79
- ☐ Beef Burrito (Beef, Cheese, Onion, Picante Sauce) \$2.99
- ☐ Beef/Bean Burrito (Beef/Bean, Cheese, Onion, Picante Sauce) \$2.29
- ☐ Beef/Bean Burrito Supreme (Beef/Bean, Lettuce, Cheese, Tomato, Onion, Black Olives, Sour Cream, Picante Sauce) \$2.99
- ☐ Chicken Burrito Supreme (Refried Beans, Chicken, Lettuce, Cheese, Tomato, Onion, Black Olives, Sour Cream, Picante Sauce) \$2.99

Hard Shell Tacos

- ☐ Beef (Beef, Lettuce, Cheese, Picante Sauce) \$1.99
- ☐ Chicken (Chicken, Lettuce, Cheese, Picante Sauce) \$1.99

Hard Shell Supreme

- ☐ Beef Supreme (Beef, Lettuce, Cheese, Tomato, Onion, Black Olives, Sour Cream, Picante Sauce) \$2.49
- ☐ Chicken Supreme (Chicken, Lettuce, Cheese, Tomato, Onion, Black Olives, Sour Cream, Picante Sauce) \$2.49

Soft Shell Tacos

- ☐ Beef (Beef, Lettuce, Cheese, Picante Sauce) \$1.99
- ☐ Chicken (Chicken, Lettuce, Cheese, Picante Sauce) \$1.99

Soft Shell Supreme

- ☐ Beef Supreme (Beef, Lettuce, Cheese, Tomato, Onion, Black Olives, Sour Cream, Picante Sauce) \$2.49
- ☐ Chicken Supreme (Chicken, Lettuce, Cheese, Tomato, Onion, Black Olives, Sour Cream, Picante Sauce) \$2.49

Walking Tacos

- ☐ Regular (Meat, Cheese, Lettuce, Picante Sauce) \$4.79
- ☐ Supreme (Meat, Cheese, Lettuce, Picante Sauce, Black Olives, Onions, Sour Cream, Tomato) \$4.99

6 Pack Tacos

- ☐ Hard Shell Tacos
- ☐ Soft Shell Tacos \$9.99

Sides

- ☐ Nachos (Chips, Cheese, Jalapenos) \$2.79
- ☐ Nacho Supreme (Beef/Bean, Chips, Cheese, Tomato, Onion, Black Olives, Jalapenos, Sour Cream, Salsa) \$4.99
- ☐ Beef Taco Salad ☐ Bowl \$4.99
- ☐ Chicken Taco Salad ☐ Bowl \$4.99
- ☐ Refried Beans \$1.49
- ☐ Nacho Cheese 50¢
- ☐ Seasoned Potato Rounds 32 Count \$2.99

Add .75 for extra chicken or beef • Add .55 for all other extras

Expressway Springfield
11 East Rock Street
Springfield MN 56087
507-723-5721



School Masks from Deluxe Print

www.deluxeprint.biz



**We can also customize masks
with your business logo.**

Order online or contact me directly



www.deluxeprint.biz

ED's Repair

SPRINGFIELD, MN
723-5985



DRS. AKRE & CLARK
FAMILY EYE CARE

*Quality family eye care for
over 65 years*

1715 S. Broadway, New Ulm, MN 56073
623 W. Rock St, Springfield, MN 56087
507.354.8531 akreclarkeyecare.com

CITY OF SPRINGFIELD EMERGENCY ALERTING AND NOTIFICATION SYSTEM



Dear Residents,

The *City of Springfield* wants you and your family to be safe and informed during emergencies in our area. These may include public safety threats, dangerous weather, and traffic advisories. Information is key, and we strongly encourage you to sign up to receive text message alerts directly from *The City of Springfield*.

Registering for alerts is easy — simply text the City Zip Code — **56087** to **888777** and you'll be informed and instructed when necessary.

**TEXT 56087 TO 888777
TO SIGN UP FOR ALERTS**



powered by  **NIXLE**

Springfield Area Chamber of Commerce
33 South Cass Avenue * P.O. Box 134
Springfield, MN 56087
507-723-3508
spfdchamber@newulmtel.net
www.springfieldmnchamber.org

Denise Gicker
Executive Director
Office Hours: Monday-Friday 9am-1pm



Chamber Chatter is a publication of the Springfield Area Chamber of Commerce. It is published monthly to keep members and friends informed of events, activities and programs in and around the community.

Mission Statement – The mission of the Springfield Area Chamber of Commerce/CVB is to strengthen the business community and take a leadership role in promoting economic growth in a spirit of cooperation and team work.

Vision Statement – Promote economic growth through the recruitment and retention of quality businesses and industries that will contribute to the overall economic health of the community.

Provide the membership networking opportunities, referrals, internet promotion and other membership services to promote and enhance their business.

Develop and nurture relationships with local government and other community sectors to help facilitate the needs and interests of the business community and enhance the overall quality of life within the community.

Chamber of Commerce General Board of Directors 2020

President- Matt Muske – Muske, Suhrhoff, & Pidde Ltd.

Vice President- Rachelle Halvorson- Halvorson Office Express

Dan Anderson- Springfield Market

Jill Riederer- City of Springfield Representative

Chrissy Boerboom- St. John's Circle of Care

Mike Granda- Farmers & Merchants State Bank

Deb Miesen- Miesen's Color Center

Kayla Tibboel- SouthPoint Financial Credit Union

Christina Wagner- Riverside Animal Clinic