

# *CHAMBER CHATTER*



## *August 2020*

**August 7<sup>th</sup> - Lunch Wagon @ Springfield Market**

**September 11<sup>th</sup> - Lunch Wagon @ Springfield Market**

**TBD- Spirit of Springfield/Business of the Year Banquet**

\*Please share the Chamber Chatter Newsletter with your employees. The newsletter is also now available on the Chamber website at <https://springfieldmnchamber.org/chamber-chatter/>. It will also be posted on Facebook when the current newsletter is available on the Chamber Website.

If there are additional email addresses you would like me to add to make sure our newsletter is getting to all who are interested, please let me know by emailing me at [spfdchamber@newulmtel.net](mailto:spfdchamber@newulmtel.net) and I would be happy to add them to the email list.

***SPRINGFIELD AREA  
CHAMBER OF COMMERCE  
LUNCH STAND***

**FRIDAY, AUGUST 7, 2020  
11AM-1PM**

**SPRINGFIELD MARKET PARKING LOT**



***ROOT BEER FLOATS \$2***

***SLOPPY JOE SANDWICH MEAL \$6***



***MEAL INCLUDES CHIPS  
COOKIE & BEVERAGE***

# FREE MASK DISTRIBUTION



Per Executive Order 20-81, the Springfield Area Chamber of Commerce has received a one time shipment of paper disposable masks to distribute to all businesses in our area. They are intended to be used for customers or employees as all of us ramp up for the implications of the executive order that mandates indoor mask use. This is a one time shipment.

Masks will be available in packages of 50.  
Please be courteous and only take 1 box at a time as needed.

## **MASKS CAN BE PICKED UP AT:**

**SPRINGFIELD CITY HALL**  
2 E. Central Street, Springfield  
**DURING BUSINESS HOURS**  
Monday-Thursday 7:30 am - 4 pm  
Friday 7:30 am - 3 pm



Minnesota Department of Health website for materials, resources including printable posters/signs and social media images

[https://www.health.state.mn.us/diseases/coronavirus/materials/index.html?fbclid=IwAR1\\_Oh1umsmZ7HI05sWbrLC3BNHNmLI-KlqBoOvtPBFmipegP-0wF1ndhwk](https://www.health.state.mn.us/diseases/coronavirus/materials/index.html?fbclid=IwAR1_Oh1umsmZ7HI05sWbrLC3BNHNmLI-KlqBoOvtPBFmipegP-0wF1ndhwk)

[https://staysafe.mn.gov/industry-guidance/all-businesses.jsp?fbclid=IwAR3k6wyVhyb\\_NqAVnl0oiEvQR8QyNnGPqHkqoJTTEFM-OG\\_s2\\_LKi4iQXH8](https://staysafe.mn.gov/industry-guidance/all-businesses.jsp?fbclid=IwAR3k6wyVhyb_NqAVnl0oiEvQR8QyNnGPqHkqoJTTEFM-OG_s2_LKi4iQXH8)



# Member Spotlight



THE BROWN COUNTY  
**REMINDER**



119 West Main Street  
Sleepy Eye, MN 56085  
507-794-3511

## Brown County's Oldest Newspaper

*Established in 1880*

The Sleepy Eye Herald-Dispatch publishes a weekly edition along with the Brown County Reminder and Southern Minnesota Peach.

The Sleepy Eye Herald-Dispatch also publishes multiple niche publications in conjunction with the Redwood Falls Gazette, St. James Plaindealer, Wabasso Standard, Montevideo American-News, Granite Falls Advocate Tribune and Tri-County News of Cottonwood.

***These publications are all a part of LOCALiQ and the USA Today Network.***

*The Sleepy Eye Herald-Dispatch staff takes pride in providing our valued newsprint and digital subscribers with quality local news, feature stories, and sports each week.*

*We also have experienced sales professionals who can provide our advertisers with targeted newsprint and digital products to reach consumers.*



### **Sleepy Eye Herald-Dispatch Multi-Media Sales Executives**

**Kyle Nordhausen:** knordhausen@localiq.com

**Cassie Walker:** CWalker@localiq.com

### **Sleepy Eye Herald-Dispatch In-House Sales Staff**

**Samantha Borman:** sborman@localiq.com

**Denise Gonzalez:** dgonzalez@stjamesnews.com



**FOR IMMEDIATE RELEASE**

Contact Sam Hansen for more information at 507-233-6600 or  
[Sam.Hansen@co.brown.mn.us](mailto:Sam.Hansen@co.brown.mn.us)

**July 16, 2020**

***COVID-19 Business Relief Grant Funds Available Through Brown County Economic Development Partnership***

**New Ulm, MN** – Brown County is excited to announce that funding has been received by the county from the Federal CARES Act, through the State of Minnesota Department of Revenue for a new business relief grant program that will be administered through Brown County Economic Development Partners, Inc. (BCEDP). Brown County has received \$3,083,468 in Coronavirus Relief Funds. Of the county's allocation, 10% will be set-aside by Brown County Commissioners to assist businesses that have been adversely impacted by the Coronavirus.

Businesses that are eligible to apply include small businesses of 25 or less employees operating in Brown County that have been affected by Stay-at-Home orders related to COVID-19. The grant fund will give preference to businesses who have not received federal or state COVID-19 relief funds. Businesses who did receive these funds but have not received enough to meet their needs and can demonstrate additional need are encouraged to apply.

Grant amounts awarded may range from \$4,500 to \$37,500 and will be based on how many employees the business had as of March 1, 2020. Businesses will need to demonstrate a loss of 20% or more in revenue to be eligible.

To apply, businesses will need to provide a completed application and attachments. To access the guidelines and application, please visit [www.co.brown.mn.us](http://www.co.brown.mn.us), request documents via email at [robberma@hotmail.com](mailto:robberma@hotmail.com), or call the BCEDP Office at (507)794-7992. Applicants must submit a completed application by August 24, 2020. Priority will be given to applications received by August 24, 2020; however, additional grants may be awarded after August 24, 2020 depending on availability of funds. Grant recipients will be notified by September 14<sup>th</sup>.

BCEDP is a non-profit organization working on behalf of entrepreneurs and business owners in partnership with local development organizations, chambers of commerce, and banks. If you need assistance with starting or expanding your business, please contact the BCEDP Office at (507)794-7992, or email [robberma@hotmail.com](mailto:robberma@hotmail.com).

# **Brown County COVID-19 Business Relief Grant**

## **Eligibility and Program Guidelines**

### **Eligible Businesses:**

- For-profit corporation, partnership, LLC, or sole proprietor that can demonstrate their business was directly and adversely affected by COVID-19 economic impact. The impact must be equivalent to at least a 20% reduction in sales (Reduction shall be calculated off either the prior year 2019 annualized monthly sales, or current month to same month prior year sales.)
- Business must operate within Brown County.
- Businesses with 25 or less employees, calculated on a Full Time Equivalent basis. For this program, Full Time Equivalent will be equal to at least 32 hours per week. Sole proprietors are eligible, please see “terms of the funding” for more information.
- Businesses that have been in operation since March 1, 2020; Operating means showing some source of revenue as verified by financial statements or bank deposit records.
- Business must be active at the Secretary of State as of the time of application.

### **Ineligible Businesses:**

- Those that qualify for traditional bank financing sufficient to meet their needs.
- Businesses that do not meet the above criteria of “Eligible Businesses.”

### **Fund Priorities:**

The fund will give priority to businesses forced to shut down normal operations due to Governor Walz’s Executive Orders, including but not limited to:

- Sit-down restaurants
- Bars and pubs
- Salons and spas
- Fitness centers
- Small retail businesses
- Tourist-related small businesses

**Funds can be used for** rent or mortgage payments, payroll for current employees, working capital and other operational costs. Funds cannot be used to pay or refinance past debt.

### **Terms of the Funding:**

- Funding levels are based on the number of full time equivalent (FTE) employees as of March 1, 2020. Full time for the purposes of this application will be any employee that works at least 32 hours per week. For those working less than 32, divide the number of hours by 32 to calculate FTE (i.e. 24 hours per week/32 = .75 FTE)
- Businesses will receive \$1,500 per FTE with a minimum of \$4,500 (for sole proprietors and businesses with 1 to 3 FTE employees) and maximum of \$37,500 (for businesses with 25 FTE employees). If FTE is not a whole number, funding will round up to the nearest whole number (i.e. FTE of 4.3 will receive \$7,500). Sole proprietors with no employees will receive \$4,500.

## How to Apply:

Applicants must submit the following by August 24, 2020. Priority will be given to applications received by August 24, 2020; however, additional grants may be awarded after August 24, 2020 depending on availability of funds. The grant fund will give preference to businesses who have not received federal or state COVID-19 relief funds. Businesses who did receive these funds but have not received enough to meet their needs and can demonstrate additional need are encouraged to apply.

1. Businesses may receive only one grant from the Brown County COVID-19 Relief Grant.
  - A signed and completed Application Form.
  - April 2020 monthly profit and loss statement or other report of revenue for the month to verify decrease was at least 20% over average monthly revenue for 2019.
  - Prepared 2019 financial statements or tax returns, if available. If not available, company prepared profit-and-loss statement (income and expense statement) and balance sheet for 2019 (or since the business start, if operating less than 12 months).
  - March 1, 2020 Payroll Information verifying number of employees and hours worked to verify number of FTE employees for grant amount determination.
  - Entity documents including Articles of Organization, bylaws, or other means to verify the authorized signers on the grant.
  - Applications and attachments should be sent to [robberma@hotmail.com](mailto:robberma@hotmail.com) or in person or by US Mail to: BCEDP, 300 2<sup>nd</sup> Avenue SW, Sleepy Eye, MN 56085. For any questions please call Rob Anderson at 507-640-0933.
2. Businesses must:
  - Be able to demonstrate that the applicant has been directly and adversely affected by COVID-19 economic impact.
  - Be current on financial obligations up to February 2020.
  - Provide complete application
  - Demonstrate the use of funds upon request.
3. Grants cannot be provided to a business:
  - That derives income from passive investments without operational ties to operating businesses.
  - That primarily generates revenue from gambling activities.
  - That is a non-profit or is owned by a non-profit organization.
  - That have no current or historical financial statements or began operating after March 1, 2020.

Applicant must submit completed application and all attachments prior to grant committee review. Applications will not be reviewed until all information is submitted. The grant review committee reserves the right to reject any application.

Following approval, the applicant shall proceed with setting up a date to sign the grant agreement. Grant recipients will be notified by September 14, 2020.

**Please submit completed application and attachments to: [robberma@hotmail.com](mailto:robberma@hotmail.com) or in person or by US Mail to: BCEDP, 300 2<sup>nd</sup> Avenue SW, Sleepy Eye, MN 56085. For any questions please call Rob Anderson at (507)794-7992 or cell phone at (507)640-0933.**

## Brown County COVID-19 Business Relief Grant

### Application Form

#### Program Information:

This grant has been developed to provide emergency assistance to small businesses in Brown County adversely impacted by the COVID-19 pandemic.

#### Eligibility Notes:

All applicants must operate within Brown County. Only businesses with a COVID-19 impact equivalent to a 20% reduction in annualized sales or more are eligible. (Reduction shall be calculated off either the prior year 2019 annualized monthly sales, or current month to same month prior year sales.)

If your business has been negatively impacted by COVID-19, but has not seen a 20% revenue reduction, exceptions may be made on a case by case basis. Document the impact you have seen, and why it did not cause a 20% or greater reduction in revenue.

**Please see the Program Guidelines document for full eligibility and program information.**

#### Applicant Information (Sole Prop \_\_ LLC \_\_ Sub S Corp \_\_ C Corp \_\_ Partnership \_\_)

Business Legal Name: \_\_\_\_\_ Tax ID: \_\_\_\_\_

Business Operating Name (if different): \_\_\_\_\_

Business Contact Name / Title: \_\_\_\_\_

Phone: \_\_\_\_\_ Email: \_\_\_\_\_

Street Address: \_\_\_\_\_

City: \_\_\_\_\_ County: \_\_\_\_\_ Zip Code: \_\_\_\_\_

Mailing Address (if different): \_\_\_\_\_

Business Ownership – Provide name and ownership percentage of each owner who holds at least 20% ownership:



LEGAL NAME	ADDRESS	SSN	OWNERSHIP %

Business Description (include product/industry): \_\_\_\_\_

---



---



---



---



---



---

Month/Year Operations Began: \_\_\_\_\_

### COVID-19 Impact

Briefly explain how the business was impacted by COVID-19 pandemic: \_\_\_\_\_

---



---



---



---



---

Total annual sales in 2019: \$ \_\_\_\_\_

Percent reduction in sales resulting from COVID-19 pandemic: \_\_\_\_\_ %

Funding levels are based on the number of full time equivalent (FTE) employees as of March 1, 2020. Full time for the purposes of this application will be any employee that works at least 32 hours per week. For those working less than 32, divide the number of hours by 32 to calculate FTE (i.e. 24 hours per week/32 = .75 FTE)

Total FTE Employees: \_\_\_\_\_

### Required Financial Information

The following must be submitted with application.

- 2019 financial statements or tax returns, if available. If not available, company prepared profit-and-loss statement (income and expense statement) and balance sheet for 2019 (or since the business start if operating less than 12 months).
- April 2020 monthly profit and loss statement or other report of revenue for the month to verify decrease was at least 20% over average monthly revenue for 2019.
- Entity documents including Articles or Organization, bylaws, or other means to verify the authorized signers on the grant.
- March 1, 2020 Payroll Information verifying number of employees and hours worked to verify number of FTE employees for grant amount determination.
- Additional documentation may be requested to assure eligibility.

### **BUSINESS CERTIFICATION:**

I authorize Brown County and/or Brown County Economic Development Partners, Inc. to obtain personal and credit information about me from my employer and credit bureau, or credit reporting agency, any person who has or may have any financial dealing with me, or from any references I have provided. This information, as well as that provided by me in the application, will be referred to in connection with this application and any other relationships we may establish from time to time. Any personal and credit information obtained may be disclosed from time to time to other lenders, credit bureaus or other credit reporting agencies.

I certify that all information provided herein is true and accurate and that the official signing this form has authorization to do so.

---

Name/Title of Authorized Business Representative

---

Signature of Authorized Business Representative

Date: \_\_\_\_\_

Please submit completed application and attachments to [robberma@hotmail.com](mailto:robberma@hotmail.com) or mail to:

**BCEDP  
300 2<sup>nd</sup> Avenue SW  
Sleepy Eye, MN 56085**

**For any questions please call Rob Anderson at (507)640-0933.**

# **School Masks from Deluxe Print**

**[www.deluxeprint.biz](http://www.deluxeprint.biz)**



**We can also customize masks  
with your business logo.**

**Order online or contact me directly**



**[www.deluxeprint.biz](http://www.deluxeprint.biz)**

## Saying I Do? Create a Registry with Miesen's Color Center



### In Person

Visit our store - you can either stop in or make an appointment to meet with us to view our merchandise and make your selections.

### Email

View our merchandise in the photo albums on our Facebook page and email us with your selections.



### Facetime or Zoom

Contact us to schedule an appointment to make your selections via a 'live video' tour of our store by Facetime or Zoom.

CONTACT US OR VISIT  
WWW.MIESENSCOLORCENTER.COM/HOW-TO-REGISTER  
FOR MORE INFO  
18 E. CENTRAL STREET, SPRINGFIELD, MN 54877  
507.723.4424  
JAM@NEWULMTEL.NET

## Current Registries

MARIAH HOYT

&

SHAWN ANDERSON

Shower TBD

Wedding October 10, 2020

*New!*



3 INCH LED MAGIC FLAME \$24.99



2 lighting modes  
flame & steady light

USB charging - charge lasts 72 hours

timer with 6 hour automatic shut off

magnetic bottom - attach to a metal  
surface to hang upside down

rain proof - indoor/outdoor



5 INCH LED CANDLE  
\$28.99



3 lighting modes:  
flame, steady light  
& smooth fade

USB charging  
charge lasts 30 hours

2/4/6/8 hour timer

remote control

magnetic bottom with  
attached hanger  
can also be used upside down



## MIESEN'S COLOR CENTER

Downtown Springfield

507.723.4424

[www.miesenscolorcenter.com](http://www.miesenscolorcenter.com)

Paint . Stain . Flooring . Ceramic Tile . Wallpaper . Window Treatments  
Residential . Commercial  
Gifts . Home Décor . Fontanini . Bridal Registry





# Hello.

It's convenience calling.



Online Banking



Mobile Banking



Zelle® money transfers



VideoConnect calls



Mobile Wallet



MoneyPass ATM network

Check out all of our mobile options  
at <https://bit.ly/SPFCUMobileSuite>



877-794-6712 | [www.southpointfinancial.com](http://www.southpointfinancial.com) | Federally Insured by NCUA

## **SouthPoint announces retirement of Board of Directors Chairperson**

*(Sleepy Eye, MN – July 31, 2020)* SouthPoint Financial Credit Union Board of Directors Chair Gordon Osmonson announced his retirement at SouthPoint's virtual Annual Meeting on July 21. Osmonson was appointed to the Board of Directors in 1976, and has been board chairperson for 24 of those years.

Osmonson has been an instrumental part of SouthPoint Financial Credit Union since becoming a member 60 years ago. He has been a steadfast SouthPoint and credit union movement advocate 100 percent of the time. His approach to membership and retention has been a large part of SPFCU's key to success.

"Gordie's leadership, passion for our purpose and desire to make a difference in our communities has impacted thousands of people and spanned multiple generations," SouthPoint CEO Jay Gostonczik said. "We are grateful for the time we were blessed to have him and he will be greatly missed as he retires."

In addition to Board Chair, Gordie has been a Sleepy Eye Lion's Club member for 58 years, serving as a two-time president throughout his 16 years on the Board of Directors; Junior Achievement and Biz Town volunteer and representative; board member of the Sleepy Eye Medical Center for 24 years, 15 as Board Chairperson; and a volunteer for St. Mary's Church, the American Legion and Brown County United Way.

"We truly thank Gordie for his volunteerism, dedication and helping SouthPoint become a trusted financial partner," Gostonczik said.

Matt Lux (previous vice chairperson) will succeed Gordie as board chairperson and Mike Krueger (previous director) will serve as vice chairperson.





# JOIN AF FOR *FREE*

---

No membership dues until Sept 15



**Grain States LLC**  
Quality Millwright, Piping And Erection Services

**Michael Wendt**  
President

Cell 507-220-3436  
Office/Fax 507-723-8185  
E-mail [grainstatesllc1@gmail.com](mailto:grainstatesllc1@gmail.com)  
38790 E Cottonwood St  
Springfield, Mn 56087



# REINER

## REAL ESTATE

Springfield, MN | [www.reinerre.com](http://www.reinerre.com) | Office: 507.723.5233 | Amanda Frank, Broker

### Check out a few of our listings!

Visit [www.reinerre.com](http://www.reinerre.com) for a complete listing of our properties



#### 402 Marshall Ave N, Springfield - \$159,500

This incredibly clean and well-maintained property features various updates throughout including a complete kitchen remodel with center island, built-in seating area, tile backsplash, and stainless steel appliances, dining room with patio door leading out to the backyard, main level laundry, and remodeled full bath on the main floor. The upper level has a newly renovated (in 2020) half bath and three bedrooms.

Updated windows, siding, and shingles. Beautiful landscaping and great backyard with large patio area. Detached triple garage (32' x 42') is insulated, heated and cooled, and has a separate office area.



#### 527 W Van Dusen St, Springfield - \$146,000

This uniquely laid out, one owner home is spacious and has been very well maintained. It is located close to the public school on a large lot. The main level has large windows with lots of natural light, an eat-in kitchen with a door leading out to the patio and an adjoining dining room overlooking the backyard. It has a large living room and separate lower level family room with an adjacent half bath and door that leads to a second patio. The big backyard has great shade cover and space for flower beds and gardens.



#### 114 E Sanborn St, Springfield - \$94,500

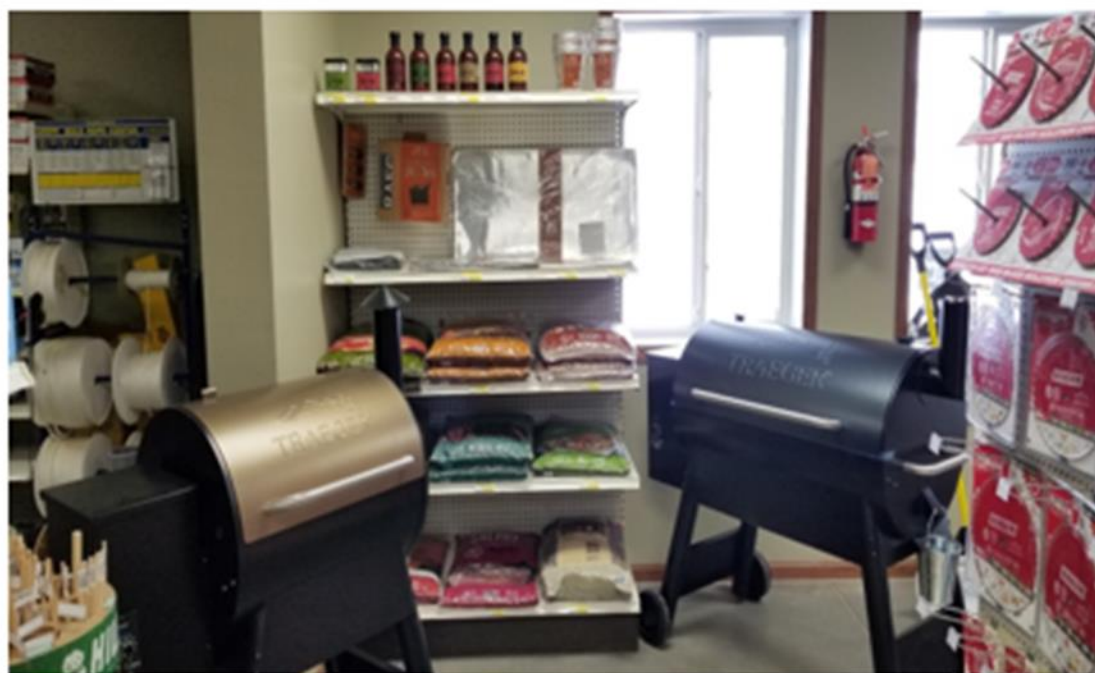
This well-cared for home has an eat-in kitchen, living room with French doors, separate dining room with patio door leading out to the deck, family room in the basement with egress windows and a room that could easily be converted into a 4th bedroom, updated full bathroom, and a large front entry with an open staircase. Other features include a beautiful front porch, new landscaping throughout, and new trees in backyard. Storage shed is included. Detached single garage.

**Summer is here and the market is heating up too! We need new listings – if you're thinking of selling, now is an ideal time! We offer virtual tours for buyers too! Give us a call -723-5233 - so we can visit about the next step!**



**CLEMENTS LUMBER IS NOW AN  
AUTHORIZED TRAEGER DEALER.**

**COME CHECK OUT WHAT WE  
HAVE TO OFFER!**



**CLEMENTS LUMBER**

**SPRINGFIELD - MORGAN - COMFREY - REDWOOD FALLS INC.**

(507)723-2230 (507)249-3122 (507)877-2026 (507)644-2100

"For all your building needs: residential, commercial, agricultural and remodeling."



## YOUR STORE FOR QUALITY BRANDS FOR YOUR HOME, FARM & OUTDOORS

Automotive • Tools  
Pet & Animal Health  
Hardware • Farm  
Home • Lawn & Garden  
Plumbing • Electrical  
Power Equipment  
and More!



Shop your  
nearest  
 store  
with 54  
locations  
or online  
at [runnings.com](https://runnings.com)

1115 West Central St  
Springfield, MN  
507-723-6263







# August Deli Menu



Sun	Mon	Tue	Wed	Thu	Fri	Sat
						1
2	3 Baked Potato Bar Meatloaf Dinner Cheesy Potatoes Turkey Supreme	4 Walking Tacos Philly Sandwich Beef Commercials French Dip Sandwich	5 Asian Entrees Country Fried Steak BBQ Meatballs Chicken Tender Melt	6 Pasta Day Roast Beef Dinner Country Bowls Grilled Ham/Cheese	7 Burger Day Tater Tot Hotdish Grilled Paninis	8
9	10 Baked Potato Bar Beef Tips & Gravy Sloppy Joes	11 Walking Tacos Philly Sandwich Turkey & Stuffing Fish Sandwich	12 Asian Entrees Chili Dogs Fajitas Salisbury Steak	13 Pasta Day Roast Beef Dinner Rueben Sandwich Rachel Sandwich	14 Burger Day Swedish Meatballs Chicken Stuffing Bake	15
16	17 Baked Potato Bar Meatloaf Dinner Cheesy Potatoes Turkey Supreme	18 Walking Tacos Philly Sandwich Beef Commercials French Dip Sandwich	19 Asian Entrees Country Fried Steak BBQ Meatballs Chicken Tender Melt	20 Pasta Day Roast Beef Dinner Country Bowls Grilled Ham/Cheese	21 Burger Day Tater Tot Hotdish Grilled Paninis	22
23	24 Baked Potato Bar Beef Tips & Gravy Sloppy Joes	25 Walking Tacos Philly Sandwich Turkey & Stuffing Fish Sandwich	26 Asian Entrees Chili Dogs Fajitas Salisbury Steak	27 Pasta Day Roast Beef Dinner Rueben Sandwich Rachel Sandwich	28 Burger Day Swedish Meatballs Chicken Stuffing Bake	29
30	31 Baked Potato Bar Meatloaf Dinner Cheesy Potatoes Turkey Supreme					

## Halvorson Office Express

**"Big Town Service, Small Town Friendly"**

Office Supplies, Office Machines, Stationary & Paper Supplies  
Computer Sales & Service/Repair Center - "Dell" Reseller  
Printer Sales & Service  
Computer Help & Tutoring by Appointment

4 West Central - Downtown Springfield  
Monday thru Friday \*\* 12:30 - 5 pm

Rachelle Halvorson - Owner

(507)227-7090 cell or (507)723-5678 office

"For all your home & office supply needs"

**SHOW THIS  
FOR  
\$10 OFF**

Lund  
PowerWashing

Servicing the Springfield and Redwood Falls Area. **FREE QUOTES**



We do driveways, sidewalks,  
decks, patios, homes and  
much more.

**507-205-2580**

Contact us today to change the look of your house.

-<https://lund-power-washing.business.site>

-<https://www.facebook.com/LUNDWASHING>

-[LundWashing@yahoo.com](mailto:LundWashing@yahoo.com)



**Springfield AREA**



**Neighbors Helping Neighbors**

(Serving the communities of Springfield, Comfrey, Sanborn, Clements, and Cobden)

Tuesdays 5pm – 7pm  
Thursdays 9:30am – 11:30am

Located at  
804 East Rock Street, Springfield, MN  
(507) 723-4120

[www.springfieldareafoodshelf.weebly.com](http://www.springfieldareafoodshelf.weebly.com)

<https://www.facebook.com/Springfield-Area-Food-Shelf-426599617457005/>

The Springfield Area Food Shelf has had to go thru some recent changes of operation because of the recent pandemic /COVID 19. We must follow rules through Second Harvest/Minnesota Department of Health/Governor orders.

Clients are able to get groceries thru the food shelf, but at this time we put the order together and clients pick it up at street side at the end of the side walk. Clients must call in to place orders. If you come on Tuesday nights you can start to call in at 9am Tuesday throughout the day. If you come Thursday morning than you must call in starting at 9am Wednesday throughout the day. The volunteer who takes the order will go through the food shelf while you are on the phone so you get what you request. We make every attempt to have the same products that we had before the COVID 19 started. The number to call to place your order is 507-227-7387. If number is busy leave a message and someone will call you back to get order. No clients are allowed in the food shelf and must stay outside the building at this time.

We have also had a decrease number in volunteers working at the food shelf due to the COVID 19. We have several volunteers that have some pre-existing health concerns so we do not want anyone to get sick so these individuals have chosen to not work at this time.

The Food shelf mission statement is to provide food to the needy. We also provide emergency food services to anyone who may need it. I want to encourage individuals and families who currently have been laid off or lost their jobs to know that you are very welcome to come to the food shelf for groceries during this difficult time. People who get sick and can't work or afford groceries should also consider coming. Privacy is respected and confidential!

Service Days are Tuesdays-5pm-7pm and Thursdays 9:30am-11:30am. Food Shelf is located at 804 East Rock Street (Schwanke Building) Springfield.

Call Shari Koll at 507-227-0386 /507-723-6120 or Jan Schwanke at 507-227-7387 should you have any questions.

## THANK YOU FOR SUPPORTING THE S.A.F.E. PROGRAM

The SAFE (Springfield Area Food Emergency) program is a non-profit, emergency assistance program. It is funded through personal donations, local Foundations, other community non-profit entities and the (EFSP) Emergency Food and Shelter Program allocations.

The vouchers are distributed by pastors from each of the churches in Springfield as well as New Hope Lutheran and St. Paul's Catholic churches in Comfrey.

Vouchers can be used at Springfield Market or Mike's Discount Foods in Comfrey. *Certain restrictions do apply.* Individuals may receive up to four vouchers in a calendar year but no more than one voucher per month.

The SAFE program serves those from Springfield, Comfrey, Clements, Cobden, and Sanborn. It is open to all people regardless of age, gender, family status, race, denomination or religious background. The amount given per voucher depends on the number of people in the household. The program is confidential.

Those in need of assistance, can contact one of the following churches in Springfield or Comfrey.

St. Raphael Catholic Church: 723-4137 - Fr. Philip Schotzko  
112 W VanDusen, Springfield

St. Johns Lutheran Church: 723-5397 - Pastor Julie Smith  
224 Mary Avenue, Springfield

St. Paul Lutheran Church: 723-5880 – Pastor Tricia Mattson  
303 North Cass Avenue, Springfield

United Methodist Church: 723-6698 - Pastor Rick Frederickson  
205 North Marshall Avenue, Springfield

New Hope Lutheran, Comfrey: 877-6220 - Pastor Jerome Klotz  
204 Court Str., Comfrey

St. Paul's Catholic Church, Comfrey: 877-2361  
209 N. Field Street, Comfrey



# AUGUST Specials

The **ExpressWay**  
STAPLER ENTERPRISES, INC.  
www.expresswaystores.com

**DAVID JUMBO BAR**  
**DAVID Sunflower Seeds**  
Original, BBQ & Ranch  
5.25 ea.  
**Buy 2 Save 58¢**  
**2/\$4**  
or \$2.29 ea.

**SweetTart Ropes**  
Rainbow, Blue, Cherry  
Funch, Strawberry  
3.5 ea.  
**Buy 2 Save 38¢**  
**2/\$4**  
or \$2.19 ea.

**King Size Nabisco Oreo Cookies**  
Oreo, Double Stuff Oreo,  
Golden Double Stuff, Oreo  
Sticks  
**Buy 2 Save 38¢**  
**2/\$4**  
or \$2.19 ea.

**Slim Jim Beef Sticks**  
Twin Pack  
1.94 ea.  
**Save 40¢**  
**\$2.59**  
Reg. \$2.99 ea.

**Nestle Candy Bars**  
Butterfinger, Crunch, Baby Ruth  
**Buy 2 Save 88¢**  
**2/\$3.50**  
or \$2.19 ea.

**King Size Mars Candy Bars**  
Two, Snickers, M&M's, Milky Way  
**Buy 2 Save 88¢**  
**2/\$3.50**  
or \$2.19 ea.

**Good 2 Grow Juice**  
8 oz.  
Apple and Fruit Punch  
**Save 50¢**  
**\$3.29**  
Reg. \$3.79

**Juicy Drop Pop Gummies and Gum**  
**Save 40¢**  
**\$1.99**  
Reg. \$2.39

**Corn Nuts**  
Original and Ranch  
**Save 20¢**  
**\$1.59**  
Reg. \$1.79 ea.

**Laffy Taffy Ropes**  
\$1 ea.  
Cherry, Sour Apple, Grape,  
Strawberry, Banana  
**Buy 3 Save 48¢**  
**3/99¢**  
or 49¢ each

**Big Bar Kellogg's Rice Krispies Treats**  
Longlife & Double  
Chocolate Cream  
**Save 30¢**  
**\$1.39**  
Reg. \$1.69

**"Expressway — A Great Way To Save!"**



# August Deli Specials



**Fresh is Best!**

**Any Large Specialty Pizza**

**Save \$2.00**

**\$14.99**

Reg. \$16.99

**PICCADILLY PIZZA & SUBS.**

**Cinnamon Roll**

A Delicious Cinnamon Roll with Cream Cheese Icing

**\$1.49**

Reg. \$1.89

**Save 40¢**

**Hot Ham & Swiss**

**\$2.99**

Reg. \$3.49

**Save 50¢**

**Pork Egg Rolls**

**Buy 2 Save 79¢**

**2/\$2.79**

or \$1.79 each

**"Expressway — Great at Fresh"**

**Rich's Cookies**

**Fresh Baked! Extra Large**

5 oz. Cookie

**\$1.59**

Reg. \$1.99 ea.

**Save 40¢**

Peanut Butter or Chocolate Chip

**3 Meat Breakfast Croissant**

Sausage, Bacon & Ham

**\$4.99**



**Good Neighbor Thrift**

**Accepting Fall/ Winter Clothing**

**With restrictions. Call in Basis**

**723-5778**

**Tuesday- Friday 11-4**

# Community Strong

**We are here for you in good  
times and challenging times.**

**F&M  
B A N K**

**Building Relationships.  
Making a Difference.**

 Equal Housing Lender

**Springfield | Morgan | [fmb-ebank.com](http://fmb-ebank.com)**

Member FDIC



# COVID Precautions: 2020 Flu Immunization Clinics

To help ensure the safe delivery of care during onsite flu immunization clinics, we ask each worksite to:

1. Provide each employee with a mask prior to receiving their vaccination.
2. Screen employees for symptoms of COVID-19 and contact with persons with possible COVID-19 prior to and/or upon arrival at the facility, and isolate symptomatic people as soon as possible.
3. Help ensure social distancing practices are in place during the immunization clinic (6ft separation).
4. Arrange a separate vaccination area and specific appointment times to help manage patient flow and avoid crowding.

To help ensure the safe delivery of care during onsite flu immunization clinics, NUMC staff will:

1. Wear the appropriate face covering when needed (mask, face shield, eye protection).
2. Perform hand hygiene and cleaning the environment between patients. If gloves are worn, they will be replaced between patients.
3. If your worksite cannot appropriately screen employees, we will provide signage with the appropriate screening questions.
4. Provide guidance and assistance to the worksite prior to ensure a safe and successful onsite flu immunization clinic.

# Flu and COVID-19 FAQs

## What is the difference between Influenza (Flu) and COVID-19?

Influenza (Flu) and COVID-19 are both contagious respiratory illnesses, but they are caused by different viruses. COVID-19 is caused by infection with a new coronavirus (called SARS-CoV-2) and flu is caused by infection with influenza viruses. Because some of the symptoms of flu and COVID-19 are similar, it may be hard to tell the difference between them based on symptoms alone, and testing may be needed to help confirm a diagnosis. [Similarities and Differences between Flu and COVID-19](#).

## Will there be flu along with COVID-19 in the fall and winter?

While it's not possible to say with certainty what will happen in the fall and winter, CDC believes it's likely that flu viruses and the virus that causes COVID-19 will both be spreading. In this context, getting a flu vaccine will be more important than ever. CDC recommends that all people 6 months and older get a yearly flu vaccine.

## Will a flu vaccine protect me against COVID-19

Getting a flu vaccine will not protect against COVID-19, however flu vaccination has many other important benefits. Flu vaccines have been shown to reduce the risk of flu illness, hospitalization and death. Getting a flu vaccine this fall will be more important than ever, not only to reduce your risk from flu but also to help conserve potentially scarce health care resources.

## Is COVID-19 more dangerous than flu?

Flu and COVID-19 can both result in serious illness, including illness resulting in hospitalization or death. While there is still much to learn about COVID-19, at this time, it does seem as if COVID-19 is more deadly than seasonal influenza; however, it is too early to draw any conclusions from the current data. This may change as we learn more about the number of people who are infected who have mild illnesses.

To learn more, please visit: <https://www.cdc.gov/flu/season/faq-flu-season-2020-2021.htm>

# Onsite Flu Immunizations

Flu immunizations are the best way to protect yourself and others from the influenza virus.



NUMC's Occupational Health and Wellness Department is now scheduling onsite flu immunization clinics. To schedule a clinic at your site or to learn more, please contact us at:

**Phone:** 507-217-5842

**Email:** [newulmoccupationalhealth@allina.com](mailto:newulmoccupationalhealth@allina.com)

\*Billed through employee insurance or through employer pay options



# LOCALLY Growin'



Join us in  
strengthening our local  
business community.

Get **\$50 to spend at  
a local business**  
plus a **\$50 credit**  
when you sign up for  
Internet and TV  
and post a yard sign.

Nuvera 

844.354.4111  
nuvera.net

Limited time offer. Some restrictions may apply. Offers are \$25 per service.  
Dollars to spend in community are in the form of chamber dollars or restaurant gift cards.  
Due to COVID restrictions, installations may be done by customers or delayed.

# BROWN COUNTY HISTORICAL SOCIETY

2 North Broadway, New Ulm, MN 56073

## PRESS RELEASE

### For Immediate Release

Date: July 23, 2020

Brown County Historical Society, 2 North Broadway, New Ulm, MN 56073

Contact: Kathleen L. Backer - [director@browncountyhistorymn.org](mailto:director@browncountyhistorymn.org) – 507-233-2618

### WANTED – Photographs of Rural School Houses in Brown County

The Brown County Historical Society is seeking photographs of rural school houses in Brown County. Photographs are a valuable resource for research; the BCHS does have a large photograph collection but is missing images of some of the rural schools in the county.

The following is a list of the school districts for which photos are wanted: Albin - District #'s 33 and 73; Bashaw - District #'s 72 and 80; Burnstown - District #'s 40, 64, 55, and 65; Cottonwood - District # 5; Eden - District #'s 74, 79, 57, and 18; Home - District #'s 19, 17, 22, 23, and 24; Lake Hanska - District # 81; Leavenworth - District # 32; Linden-District #'s 53, 20, 38, and 37; Milford - District # 0; Mulligan - District # 76; North Star - District #'s 56, 78, and 82; Prairieville - District #'s 58, 29, 77 and 60; Stark - District # 25; Sigel - District # 68 and Stately - District #s 71, and 66

If you have photographs of any of the schools on the list and are willing to share with the BCHS; please contact the Darla Gebhard, BCHS Research Librarian, at [research@browncountyhistorymn.org](mailto:research@browncountyhistorymn.org) or at 233-2619. NOTE: Photographs can be scanned and returned to you so you may keep your original photographs in your collection. For the upcoming Early Brown County Exhibit, early photographs, prior to 1910 will be needed; however, any photographs of schools on the list will be appreciated.

The permanent Early Brown County Exhibit, scheduled for installation in spring of 2021, will tell about the development of Brown County including: the influence of the Native Americans, Fur Traders, Pioneer Settlers and their way of life; historical events; establishment of townships, towns and cities; commerce and industry, ethnic diversity; services like communications, education and health care; and recreation of the residents of early Brown County. This new exhibit will be designed to engage and educate audiences of all ages with images, artifacts, audio and interactive components. Visitors will have an opportunity to learn about what makes Brown County unique and yet similar to other counties in Minnesota.

For more information, email [programs@browncountyhistorymn.org](mailto:programs@browncountyhistorymn.org) or call: 507-233-2620. Check out the BCHS on Facebook and on the website: [browncountyhistory.org](http://browncountyhistory.org)

# # #

Photographs:

Cottonwood Township #3

Home Township #21







# CONNECTING RURAL MINNESOTA WITH WIRELESS INTERNET SINCE 1999

*We would just like to thank MVTV for providing residents of the rural community fast and efficient wireless services that we were unable to have access to in the past. Keep up the good work MVTV. - Shelly*

- ✓ Truly Unlimited Data
- ✓ Fast Local Support
- ✓ Referral Program
- ✓ No Contracts

**320-564-4807**  
**[mvtvwireless.com](http://mvtvwireless.com)**

**MVTV**  
**wireless**  
internet provider

# Apartments Available



**Age 62 and Over**

**HUD Subsidized Rent Based On Income**

**Beautiful Social Areas**

**Visit Any Wednesday For Coffee Time At 2:00 p.m.**

**712 E. Cottonwood St., Springfield, MN**

*On the St. John's Circle of Care Campus*

**Call Robin at 507-723-4500**







### St. John Lutheran Home GrandKids and V.I.K. Club

Helping your child grow **intellectually, physically, emotionally and spiritually** into a well rounded member of our community.

#### Monday through Friday

6:45 a.m. to 5:30 p.m.

#### GrandKids

Ages 6 weeks - 5 years

#### V.I.K. Club

Before and after school care

#### More Information

(507) 723-3200

grandkids@sjlhome.com

201 South County Road 5

Springfield, MN 56087

[www.sjlhome.com](http://www.sjlhome.com)

## Intergenerational Care

Located in St. John Lutheran Home, we are the only state-licensed intergenerational day care center in Brown County. The program has been **recognized nationally** as a leader in this specialized type of care.

### Research shows

Children enrolled in intergenerational programs have **advanced social skills** compared to children in traditional day care. They learn to be **comfortable around older adults** and people of varying abilities.

Elders involved in intergenerational activities report **feeling happy, loved, younger and needed.**



### A typical day

Each day children in our care interact with the residents of St. John's Circle of Care. Routine activities include reading, singing, creating crafts, and eating together. Special events like indoor beach parties and the annual Christmas program bring extra **joy** to residents and children alike.

### Our classrooms

Children at GrandKids, 4 to K and V.I.K. Club receive age-appropriate care in one of five classrooms. The classrooms have recently been updated, enlarged, decorated and are full of fun and educational toys and games which enrich the children's lives.



**JENSEN**  
Buick • GMC • Cadillac

Hwy 15. South • New Ulm, MN  
(507) 233-8810 • (800) 967-3390  
[www.JensenMotors.com](http://www.JensenMotors.com)



# ED's Repair

SPRINGFIELD, MN  
723-5985



**DRS. AKRE & CLARK**  
FAMILY EYE CARE

*Quality family eye care for  
over 65 years*

1715 S. Broadway, New Ulm, MN 56073  
623 W. Rock St, Springfield, MN 56087  
507.354.8531 [akreclarkeyecare.com](http://akreclarkeyecare.com)

# CITY OF SPRINGFIELD EMERGENCY ALERTING AND NOTIFICATION SYSTEM



Dear Residents,

The *City of Springfield* wants you and your family to be safe and informed during emergencies in our area. These may include public safety threats, dangerous weather, and traffic advisories. Information is key, and we strongly encourage you to sign up to receive text message alerts directly from *The City of Springfield*.

Registering for alerts is easy — simply text the City Zip Code — **56087** to **888777** and you'll be informed and instructed when necessary.

**TEXT 56087 TO 888777  
TO SIGN UP FOR ALERTS**



powered by  **everbridge  
NIXLE®**

**Springfield Area Chamber of Commerce**

33 South Cass Avenue \* P.O. Box 134

Springfield, MN 56087

507-723-3508

spfdchamber@newulmtel.net

www.springfieldmnchamber.org

Denise Gicker

Executive Director

Office Hours: Monday-Friday 9am-1pm



Chamber Chatter is a publication of the Springfield Area Chamber of Commerce. It is published monthly to keep members and friends informed of events, activities and programs in and around the community.

**Mission Statement** – The mission of the Springfield Area Chamber of Commerce/CVB is to strengthen the business community and take a leadership role in promoting economic growth in a spirit of cooperation and team work.

**Vision Statement** – Promote economic growth through the recruitment and retention of quality businesses and industries that will contribute to the overall economic health of the community.

Provide the membership networking opportunities, referrals, internet promotion and other membership services to promote and enhance their business.

Develop and nurture relationships with local government and other community sectors to help facilitate the needs and interests of the business community and enhance the overall quality of life within the community.

**Chamber of Commerce General Board of Directors 2020**

President- Matt Muske – Muske, Suhrhoff, & Pidde Ltd.

Vice President- Rachelle Halvorson- Halvorson Office Express

Jill Riederer- City of Springfield Representative

Chrissy Boerboom- St. John's Circle of Care

Mike Granda- Farmers & Merchants State Bank

Deb Miesen- Miesen's Color Center

Brady Schneeberger- Springfield Market

Kayla Tibboel- SouthPoint Financial Credit Union

Christina Wagner- Riverside Animal Clinic